

"AQUATHERAPY" — ALBIN



Builder: ALBIN

Year Built: 2006

Model: high performance

Price: PRICE ON APPLICATION

Location: United States

LOA: 39' 9" (12.12mm)

Beam: 13

Min Draft: 3' 6" (1.07mm)

Max Draft: 3' 9" (1.14mm)

Cruise Speed: 20 Knots Kts. (23 MPH)

Max Speed: 24 Knots Kts. (28 MPH)

Our experienced yacht broker, Andrey Shestakov, will help you choose and buy a yacht that best suits your needs "AquaTherapy" — ALBIN from our catalogue. Presently, at Shestakov Yacht Sales Inc., we have a wide variety of yachts available on our sale's list. We also work in close contact with all the big yacht manufacturers from all over the world.

If you would like to buy a yacht "AquaTherapy" — ALBIN or would like help answering any questions concerning purchasing, selling or chartering a yacht, please call +1(954)274-4435

TABLE OF CONTENTS

TABLE OF CONTENTS	2
SPECIFICATIONS	3
Basic Information	3
Dimensions	3
Speed, Capacities and Weight	3
Accommodations	3
Hull and Deck Information	4
Engine Information	4
PHOTOS	5
CONTACTS	15
Contact details	15
Telephones	15
Office hours	15
Address	15

SPECIFICATIONS

Basic Information

Category: high performance

Sub Category: High Performance

Model Year: 2006

Year Built: 2006

Country: United States

Dimensions

LOA: 39' 9" (12.12mm)

LOD: 38' 6" (11.73mm)

Beam: 13

Min Draft: 3' 6" (1.07mm)

Max Draft: 3' 9" (1.14mm)

Speed, Capacities and Weight

Cruise Speed: 20 Knots Kts. (23 MPH)

Cruise Speed Range: 480

Max Speed: 24 Knots Kts. (28 MPH)

Max Speed Range: 290 Kts.

Water Capacity: 200 Gallons

Holding Tank: 40 Gal Gallons

Fuel Capacity: 400 Gal Gallons

Fuel Consumption: 24 Gal Gallons

Accommodations

Total Cabins: 2

Total Berths: 4

Sleeps: 6

Total Heads: 2

Hull and Deck Information

Hull Material: Fiberglass

Deck Material: Fiberglass

Hull Configuration: Semi-Displacement

Hull Color: Dark Ocean Blue Hull/White
Topsides

Hull Designer: Albin Marine

Interior Designer: Custom by Owner

Engine Information

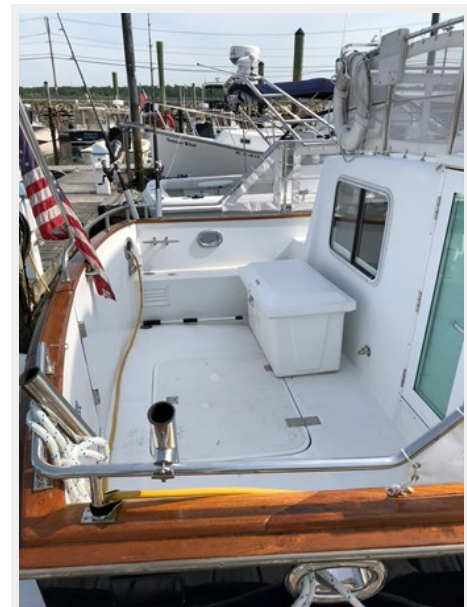
Engines: 2

Manufacturer: Yanmar

Engine Type: Inboard

Fuel Type: Diesel

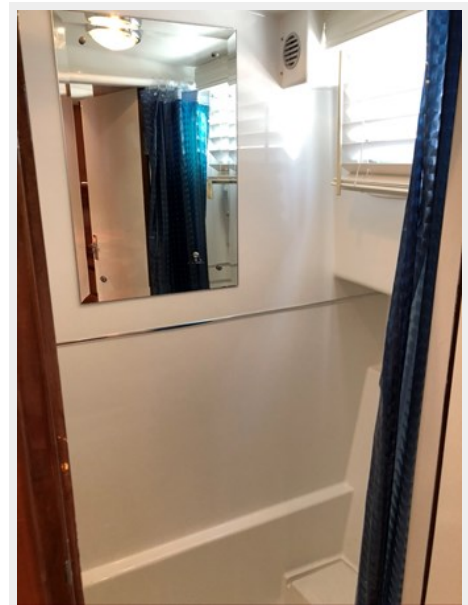
PHOTOS

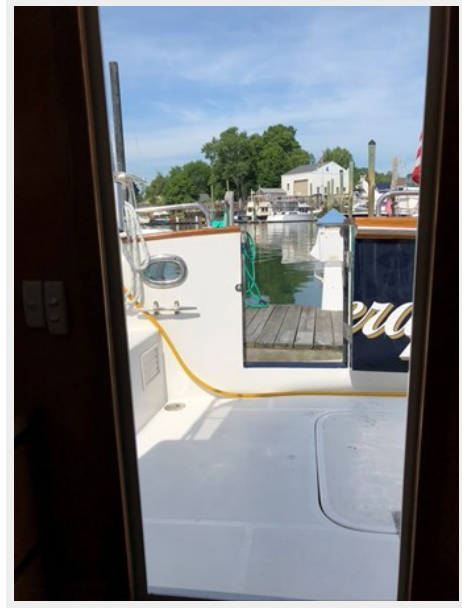
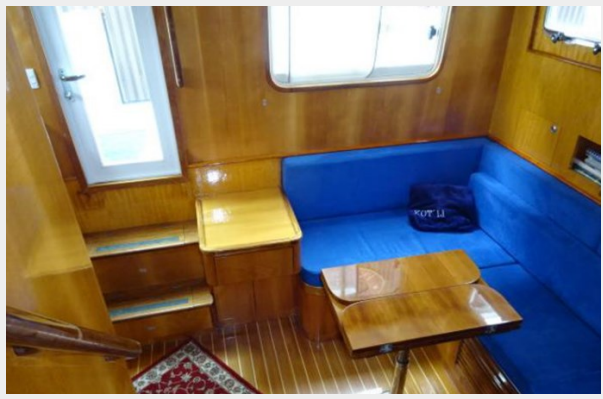




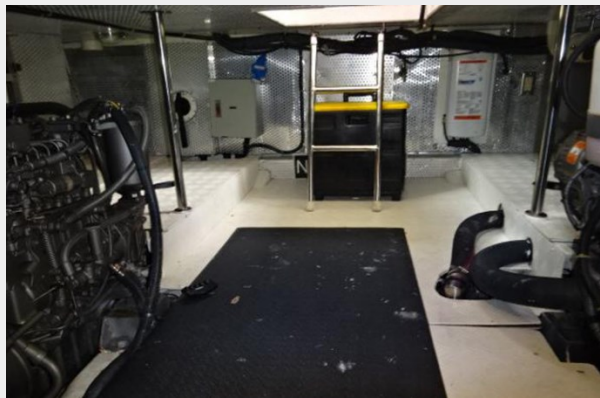
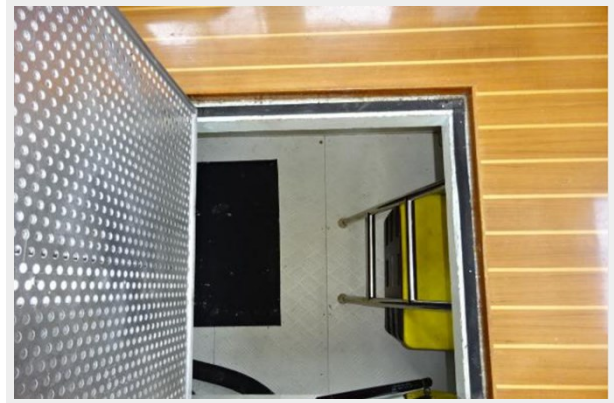


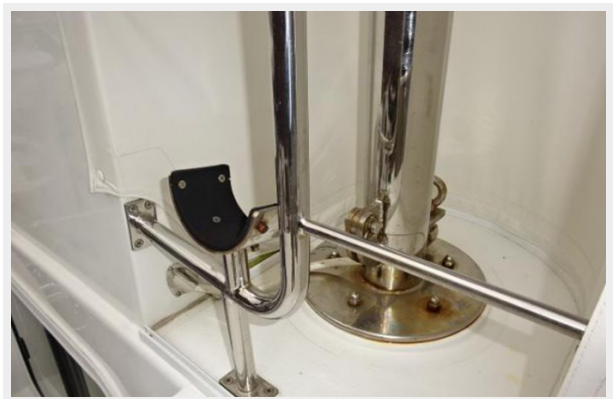


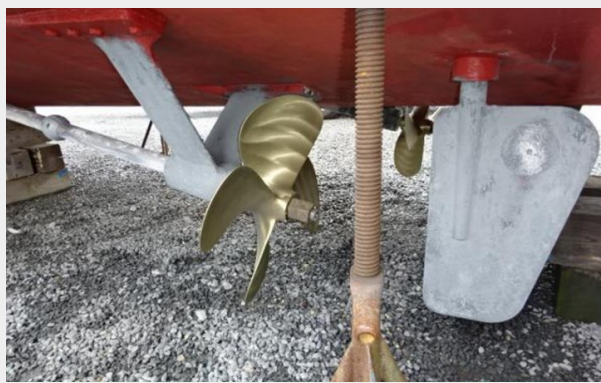












CONTACTS

Andrey Shestakov, leading yacht broker of the sales department of Shestakov Yacht Sales Inc. Shestakov Yacht Sales Inc., the official representative of the Miami/Fort Lauderdale FL headquarters.

Contact details

Email: andrey@shestakovyachtsales.com

Web: shestakovyachtsales.com/en/

Telephones

USA: +1(954)274-4435

Office hours

Monday – Saturday: **9:00 - 21:00** EDT

Sunday: **closed**

Address



Harbour Towne Marina, 850 NE 3rd St,
STE 213, Dania, FL 33004