

## ARETHUSA — GRAND SOLEIL



**Builder:** GRAND SOLEIL

**Year Built:** 1985

**Model:** Cruising Sailboat

**Price:** PRICE ON APPLICATION

**Location:** United States

**LOA:** 39' (11.89mm)

**Beam:** 12.33

**Max Draft:** 6' 4" (1.93mm)

**Cruise Speed:** 7 Knots Kts. (8 MPH)

Our experienced yacht broker, Andrey Shestakov, will help you choose and buy a yacht that best suits your needs **Arethusa — GRAND SOLEIL** from our catalogue. Presently, at Shestakov Yacht Sales Inc., we have a wide variety of yachts available on our sale's list. We also work in close contact with all the big yacht manufacturers from all over the world.

If you would like to buy a yacht **Arethusa — GRAND SOLEIL** or would like help answering any questions concerning purchasing, selling or chartering a yacht, please call **+1(954)274-4435**

---

# TABLE OF CONTENTS

---

TABLE OF CONTENTS	2
SPECIFICATIONS	3
Overview	3
Basic Information	3
Dimensions	3
Speed, Capacities and Weight	3
Accommodations	3
Hull and Deck Information	3
Engine Information	4
PHOTOS	5
CONTACTS	14
Contact details	14
Telephones	14
Office hours	14
Address	14

---

# SPECIFICATIONS

---

## Overview

---

Arethusa has been professionally maintained since at least 2000. She features fully replaced (new 2006) teak decks, seat tops and grates;. Yanmar 53 hp diesel with saildrive and Gori feathering prop, all NEW 2014; Hull and cabin sides Awlgrippped 2012. Mast and boom Awlgrippped 2012. "Arethusa is a very special yacht. Her owner of 20 years had spared no expense to maintain her in almost new condition. Your inspection of this "Swan" quality vessel will prove worthwhile, and she is offered for sale for well below her replacement value."

## Basic Information

---

**Category:** Cruising Sailboat

**Model Year:** 1985

**Year Built:** 1985

**Country:** United States

## Dimensions

---

**LOA:** 39' (11.89mm)

**LWL:** 32' (9.75mm)

**Beam:** 12.33

**Max Draft:** 6' 4" (1.93mm)

## Speed, Capacities and Weight

---

**Cruise Speed:** 7 Knots Kts. (8 MPH)

## Accommodations

---

**Total Cabins:** 2

**Total Heads:** 2

## Hull and Deck Information

---

**Hull Material:** Fiberglass

---

## Engine Information

---

**Engines:** 1

**Manufacturer:** Yanmar

**Engine Type:** Sail Drive

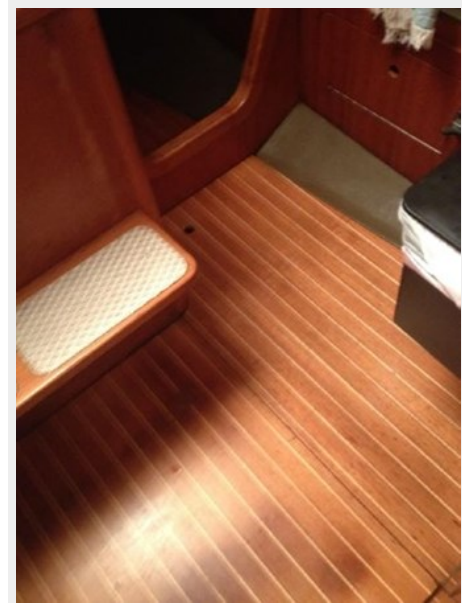
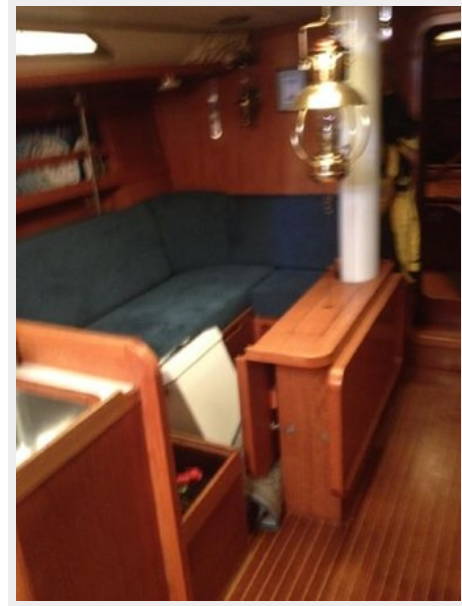
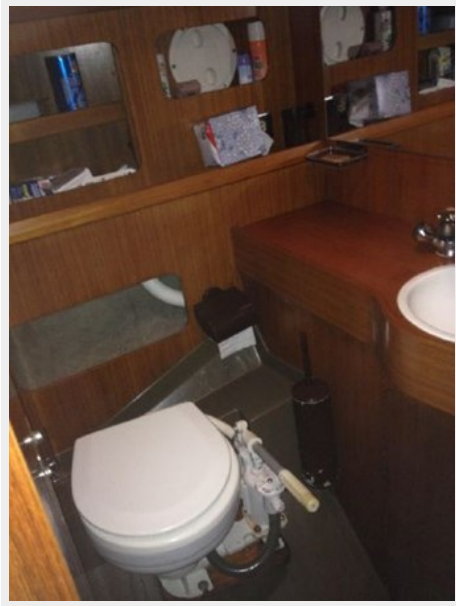
**Fuel Type:** Diesel

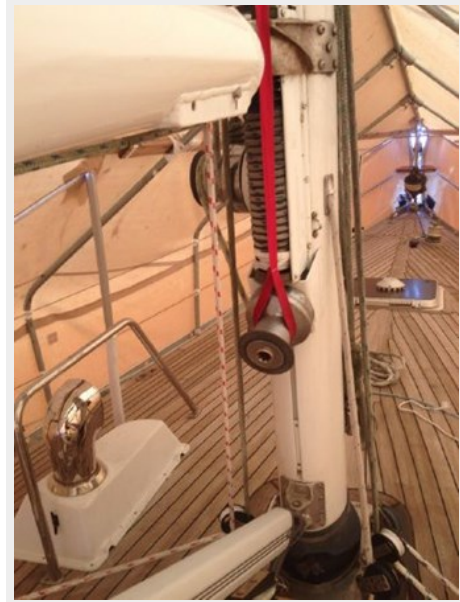
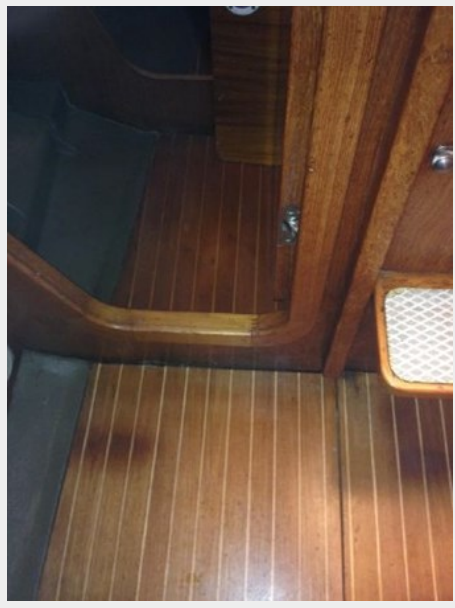
# PHOTOS



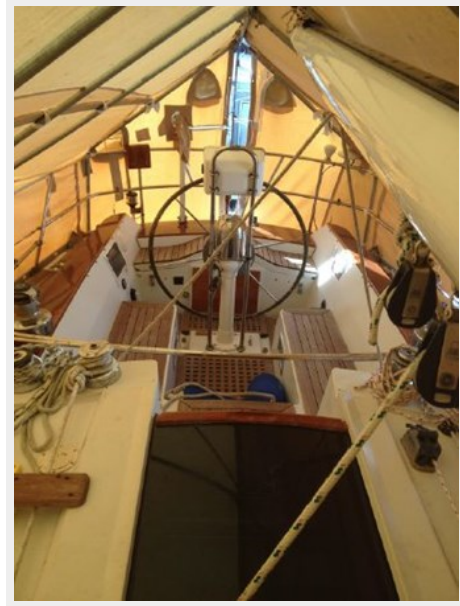


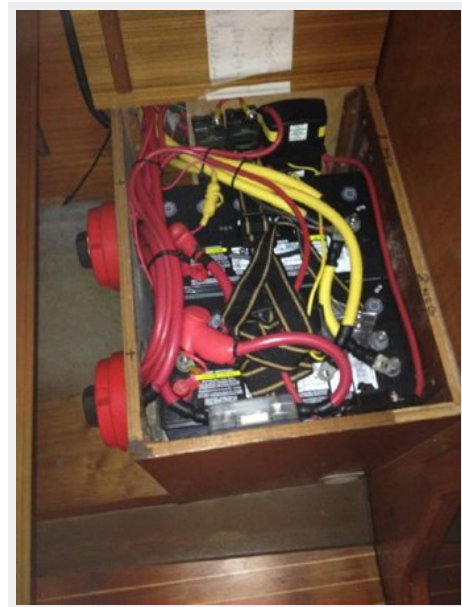




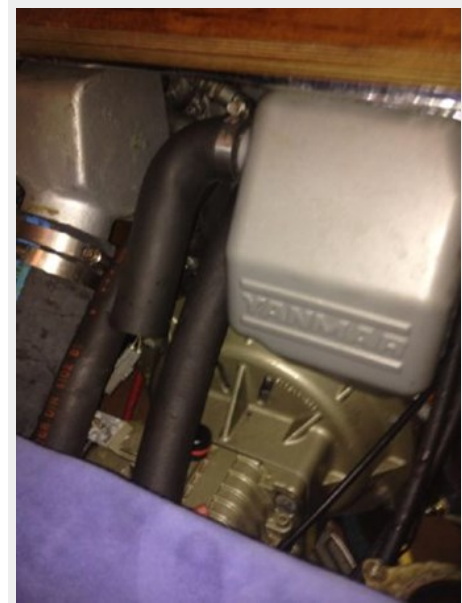
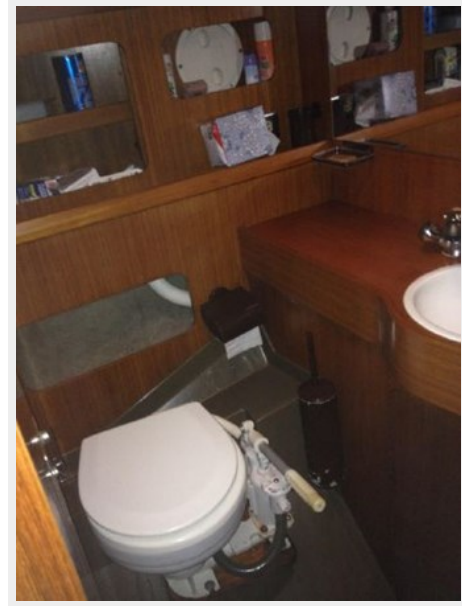


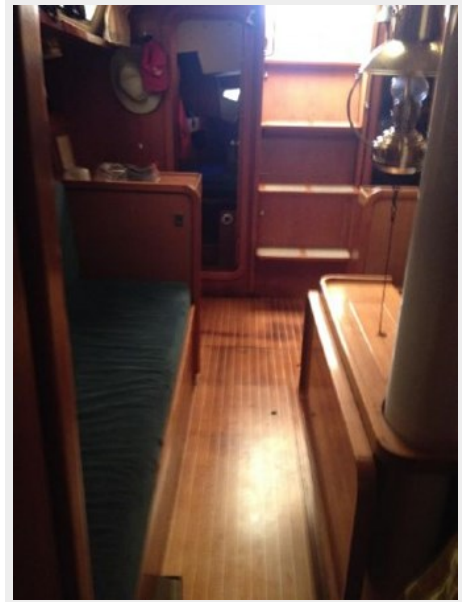
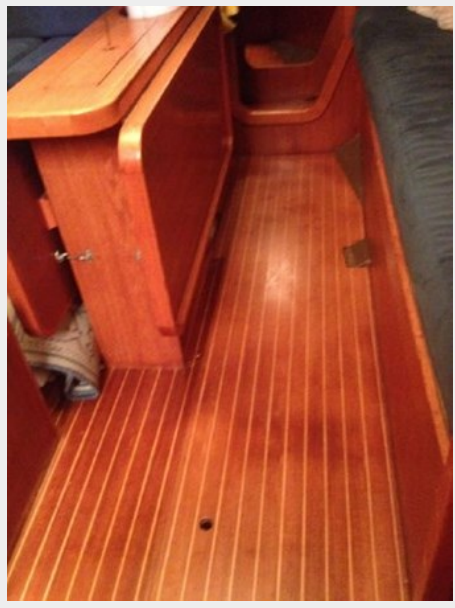


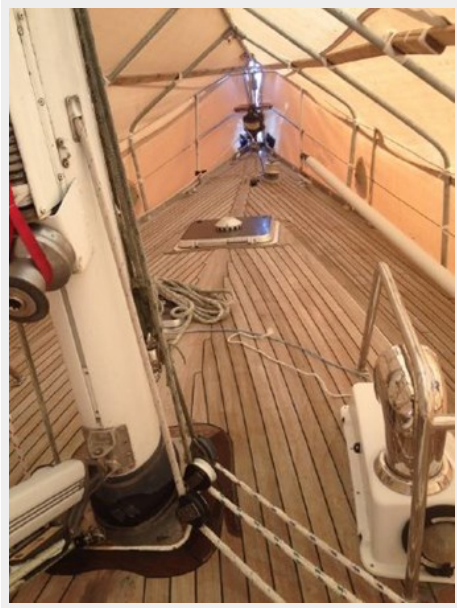














---

# CONTACTS

---

Andrey Shestakov, leading yacht broker of the sales department of Shestakov Yacht Sales Inc. Shestakov Yacht Sales Inc., the official representative of the Miami/Fort Lauderdale FL headquarters.

---

## Contact details

---

Email: [andrey@shestakovyachtsales.com](mailto:andrey@shestakovyachtsales.com)

Web: [shestakovyachtsales.com/en/](http://shestakovyachtsales.com/en/)

---

## Telephones

---

USA: +1(954)274-4435

---

## Office hours

---

Monday – Saturday: **9:00 - 21:00** EDT

Sunday: **closed**

---

## Address

---



Harbour Towne Marina, 850 NE 3rd St,  
STE 213, Dania, FL 33004