

FIVE STARS — OVERMARINE GROUP



Builder: OVERMARINE GROUP

Year Built: 2005

Model: Cruising Yacht

Price: PRICE ON APPLICATION

Location: Spain

LOA: 92' (28.04mm)

Beam: 21.66

Max Draft: 3' 1" (0.94mm)

Cruise Speed: 22 Knots Kts. (25 MPH)

Max Speed: 34 Knots Kts. (39 MPH)

Our experienced yacht broker, Andrey Shestakov, will help you choose and buy a yacht that best suits your needs **FIVE STARS — OVERMARINE GROUP** from our catalogue. Presently, at **Shestakov Yacht Sales Inc.**, we have a wide variety of yachts available on our sale's list. We also work in close contact with all the big **yacht manufacturers** from all over the world.

If you would like to buy a yacht **FIVE STARS — OVERMARINE GROUP** or would like help answering any questions concerning purchasing, selling or chartering a yacht, please call **+1(954)274-4435**

TABLE OF CONTENTS

TABLE OF CONTENTS	2
SPECIFICATIONS	4
Overview	4
Basic Information	4
Dimensions	4
Speed, Capacities and Weight	5
Accommodations	5
Hull and Deck Information	5
Engine Information	5
PHOTOS	6
Sailing	6
Anchored	6
Anchored	6
Anchored	6
Anchored	6
Saloon	7
Saloon	7
Saloon	7
Master cabin	8
Vip Cabin	8
Vip Cabin	8
Vip Cabin	8
Twin cabin	8
Twin cabin	8
Pullmas cabin	9
Single cabin	9
Single cabin	9
CONTACTS	12

Contact details	12
Telephones	12
Office hours	12
Address	12

SPECIFICATIONS

Overview

Built in 2005 with a large refit in 2019, she fit the perfect balance of class, luxury and a sporty design.

Five Stars the best Mangusta 92 in the market and impeccably maintained.

FIVE STARS interior configuration has been designed to comfortably accommodate up to 10 guests overnight in 5 cabins, comprising a Master suite, 1 vip cabin, 1 twin cabin with one pullman, one single cabin and one cabin with two pullman beds. She is also capable of carrying up to 4 crew onboard to ensure a relaxed luxury yacht experience.

FIVE STARS features a planing GRP hull and grp superstructure, with teak decks. Powered by 2 MTU 2.000 H.P diesel engines and propelled by her twin MTU engines and Kamewa water jets to reach a top speed of 35 knots, and comfortably cruises at 25 knots. She can carry around 8,000 litres of diesel on-board in her fuel tanks. Her water tanks store around 1,400 litres of fresh water.

Basic Information

Category: Cruising Yacht

Sub Category: Sport Cruiser

Model Year: 2005

Year Built: 2005

Country: Spain

Dimensions

LOA: 92' (28.04mm)

Beam: 21.66

Max Draft: 3' 1" (0.94mm)

Speed, Capacities and Weight

Cruise Speed: 22 Knots Kts. (25 MPH) **Max Speed:** 34 Knots Kts. (39 MPH)

Gross Tonnage: 95 Pounds

Water Capacity: 1400 Gallons

Fuel Capacity: 2113.38 Gal Gallons

Accommodations

Total Cabins: 5

Sleeps: 10

Crew Cabin: 4

Crew Berths: 4

Hull and Deck Information

Hull Material: GRP

Engine Information

Engines: 2

Manufacturer: MTU

Engine Type: Inboard

Fuel Type: Diesel

PHOTOS

Sailing



Anchored



Anchored



Anchored



Anchored





Saloon



Saloon



Saloon



Master cabin



Vip Cabin



Vip Cabin



Vip Cabin



Twin cabin



Twin cabin



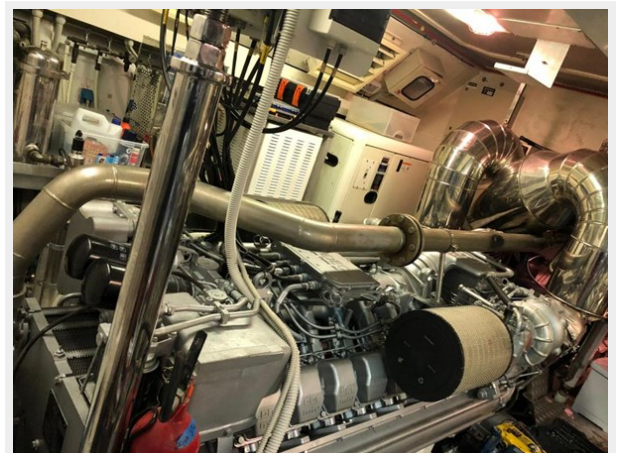
Pullmas cabin

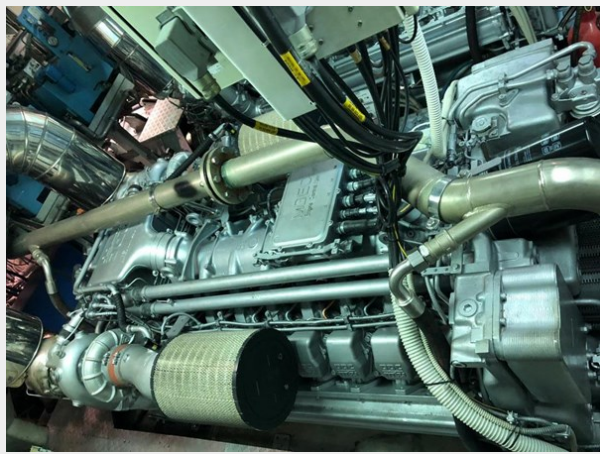


Single cabin



Single cabin







CONTACTS

Andrey Shestakov, leading yacht broker of the sales department of Shestakov Yacht Sales Inc. Shestakov Yacht Sales Inc., the official representative of the Miami/Fort Lauderdale FL headquarters.

Contact details

Email: **andrey@shestakovyachtsales.com**

Web: shestakovyachtsales.com/en/

Telephones

USA: **+1(954)274-4435**

Office hours

Monday – Saturday: **9:00 - 21:00** EDT

Sunday: **closed**

Address



Harbour Towne Marina, 850 NE 3rd St, STE 213, Dania, FL 33004