

LADYSHIP — HEESEN YACHTS



Builder: HEESEN YACHTS

Year Built: 1994

Model: Motor Yacht

Price: PRICE ON APPLICATION

Location: Italy

LOA: 134' 7" (41mm)

Beam: 25.45

Max Draft: 7' 11" (2.4mm)

Cruise Speed: 15 Knots Kts. (17 MPH)

Max Speed: 21 Knots Kts. (24 MPH)

Our experienced yacht broker, Andrey Shestakov, will help you choose and buy a yacht that best suits your needs **LADYSHIP — HEESEN YACHTS** from our catalogue. Presently, at Shestakov Yacht Sales Inc., we have a wide variety of yachts available on our sale's list. We also work in close contact with all the big yacht manufacturers from all over the world.

If you would like to buy a yacht **LADYSHIP — HEESEN YACHTS** or would like help answering any questions concerning purchasing, selling or chartering a yacht, please call **+1(954)274-4435**

TABLE OF CONTENTS

TABLE OF CONTENTS	2
SPECIFICATIONS	4
Basic Information	4
Dimensions	4
Speed, Capacities and Weight	4
Accommodations	4
Hull and Deck Information	5
Engine Information	5
PHOTOS	6
194.1	6
194.2	6
194.3	6
194.4	6
194.5	6
194.6	6
194.7	7
194.8	7
194.9	7
194.10	7
194.11	7
194.12	7
194.13	8
194.14	8
194.15	8
194.16	8
194.17	8
194.18	8
194.19	9

194.20	9
194.21	9
194.22	9
194.23	9
194.24	9
CONTACTS	10
Contact details	10
Telephones	10
Office hours	10
Address	10

SPECIFICATIONS

Basic Information

Category: Motor Yacht

Sub Category: Mega Yacht

Model Year: 1994

Year Built: 1994

Country: Italy

Dimensions

LOA: 134' 7" (41mm)

Beam: 25.45

Max Draft: 7' 11" (2.4mm)

Speed, Capacities and Weight

Cruise Speed: 15 Knots Kts. (17 MPH)

Cruise Speed Range: 3000

Max Speed: 21 Knots Kts. (24 MPH)

Gross Tonnage: 360 Pounds

Water Capacity: 7297 Gallons

Fuel Capacity: 9539.78 Gal Gallons

Accommodations

Total Cabins: 6

Total Berths: 8

Sleeps: 12

Total Heads: 7

Crew Cabin: 7

Crew Berths: 7

Crew Heads: 3

Hull and Deck Information

Hull Material: Aluminum

Deck Material: Teak

Hull Configuration: Planing

Hull Color: White

Exterior Designer: Frank Mulder

Engine Information

Engines: 2

Manufacturer: MTU

Engine Type: Inboard

Fuel Type: Diesel

PHOTOS

194.1



194.2



194.3



194.4



194.5



194.6



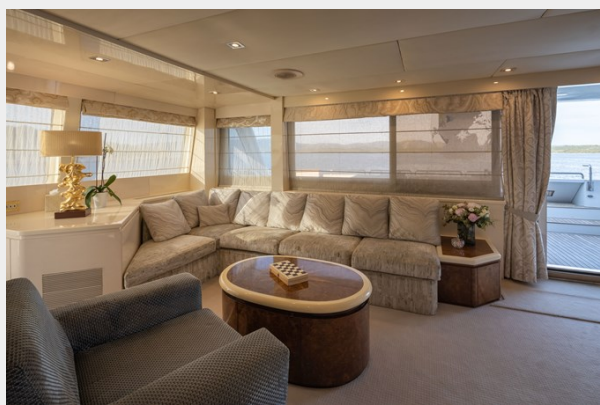
194.7



194.8



194.9



194.10



194.11



194.12



194.13



194.14



194.15



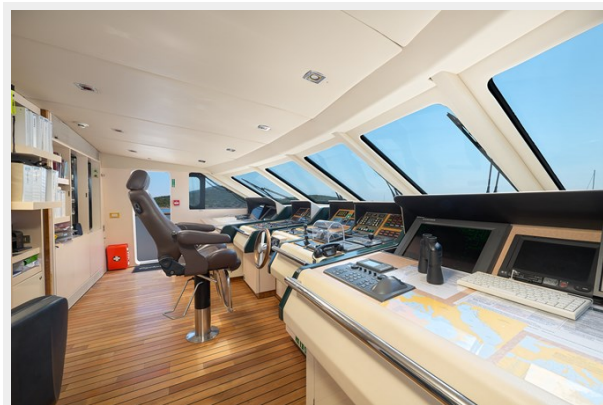
194.16



194.17



194.18



194.19



194.20



194.21



194.22



194.23



194.24



CONTACTS

Andrey Shestakov, leading yacht broker of the sales department of Shestakov Yacht Sales Inc. Shestakov Yacht Sales Inc., the official representative of the Miami/Fort Lauderdale FL headquarters.

Contact details

Email: andrey@shestakovyachtsales.com

Web: shestakovyachtsales.com/en/

Telephones

USA: +1(954)274-4435

Office hours

Monday – Saturday: **9:00 - 21:00** EDT

Sunday: **closed**

Address



Harbour Towne Marina, 850 NE 3rd St,
STE 213, Dania, FL 33004