

GOOD TIMES — MERIDIAN



Builder: MERIDIAN

Year Built: 2004

Model: Motor Yacht

Price: PRICE ON APPLICATION

LOA: 45' (13.72mm)

Beam: 14.33

Max Draft: 3' 10" (1.17mm)

Cruise Speed: 20 Knots Kts. (23 MPH)

Our experienced yacht broker, Andrey Shestakov, will help you choose and buy a yacht that best suits your needs **Good Times — MERIDIAN** from **our catalogue**. Presently, at **Shestakov Yacht Sales Inc.**, we have a wide variety of yachts available on **our sale's list**. We also work in close contact with all the big **yacht manufacturers** from all over the world.

If you would like to buy a yacht **Good Times — MERIDIAN** or would like help answering any questions concerning purchasing, selling or chartering a yacht, please call **+1(954)274-4435**

TABLE OF CONTENTS

TABLE OF CONTENTS	2
SPECIFICATIONS	4
Overview	4
Basic Information	4
Dimensions	4
Speed, Capacities and Weight	4
Accommodations	5
Hull and Deck Information	5
Engine Information	5
PHOTOS	6
2	6
3	6
4	6
5	6
6	6
7	6
8	7
9	7
10	7
11	7
12	7
13	7
14	8
15	8
16	8
17	8
18	8
19	8

20	9
21	9
22	9
23	9
24	9
25	9
26	10
27	10
28	10
29	10
30	10
31	10
32	11
33	11
34	11
35	11
36	11
37	11
38	12
39	12
CONTACTS	13
Contact details	13
Telephones	13
Office hours	13
Address	13

SPECIFICATIONS

Overview

***Good Times* is a beautiful example of the very popular Meridian 459 Cockpit Motor Yacht. The 459 combines the room and functionality of an aft cabin motor yacht with the advantages of a spacious aft cockpit. Featuring two staterooms and two heads, a large salon, and a very functional galley, the 459 is perfect for a cruising couple or family, and also for those who like to entertain.**

***Good Times* is exceptionally clean and well-maintained. Her gelcoat shines and her canvas package is quite good. Power is provided by low-hour twin Cummins 6BT diesels rated at 370 HP each, a new transmission, and her 1000 hour service.**

This boat shows extremely well and deserves a look! Please give us a call today for more details and to schedule a time for you to see her for yourself!

Basic Information

Category: Motor Yacht

Sub Category: Motor Yacht

Model Year: 2004

Year Built: 2004

Dimensions

LOA: 45' (13.72mm)

Beam: 14.33

Max Draft: 3' 10" (1.17mm)

Speed, Capacities and Weight

Cruise Speed: 20 Knots Kts. (23 MPH) **Water Capacity:** 90 Gallons

Holding Tank: 55 Gal Gallons

Fuel Capacity: 330 Gal Gallons

Accommodations

Total Cabins: 2

Total Heads: 2

Hull and Deck Information

Hull Material: Fiberglass

Engine Information

Engines: 2

Manufacturer: Cummins

Engine Type: Inboard

Fuel Type: Diesel

PHOTOS

2



3



4



5



6



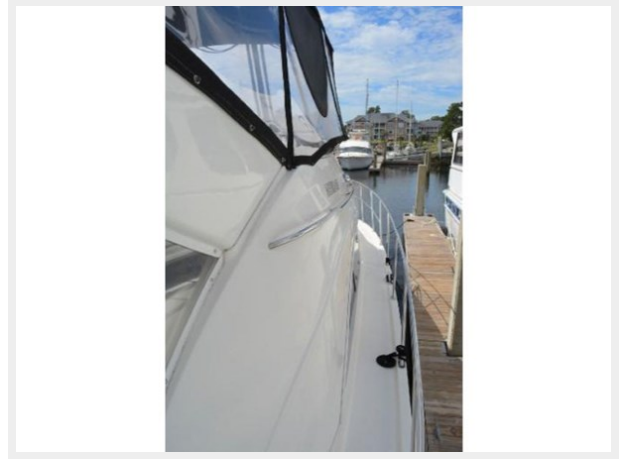
7



8



9



10



11



12



13



14



15



16



17



18



19



20



21



22



23



24



25



26



27



28



29



30



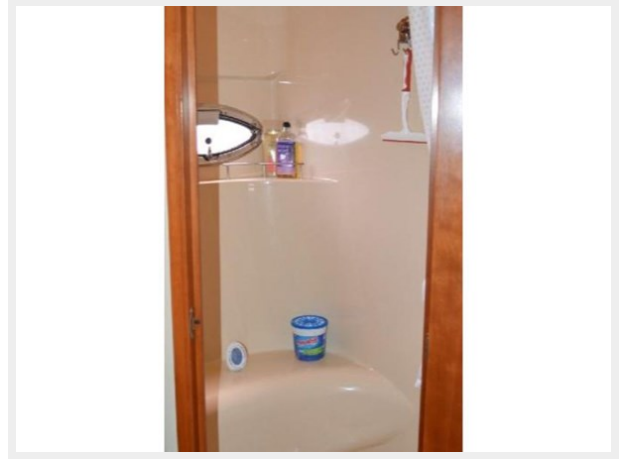
31



32



33



34



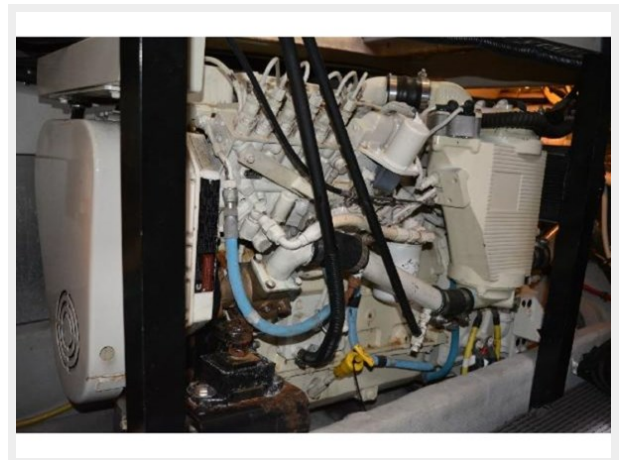
35



36



37



38



39



CONTACTS

Andrey Shestakov, leading yacht broker of the sales department of Shestakov Yacht Sales Inc. Shestakov Yacht Sales Inc., the official representative of the Miami/Fort Lauderdale FL headquarters.

Contact details

Email: **andrey@shestakovyachtsales.com**

Web: shestakovyachtsales.com/en/

Telephones

USA: **+1(954)274-4435**

Office hours

Monday – Saturday: **9:00 - 21:00** EDT

Sunday: **closed**

Address



Harbour Towne Marina, 850 NE 3rd St, STE 213, Dania, FL 33004