

SEAQUELL — LEGACY YACHTS



Builder: LEGACY YACHTS

Year Built: 2005

Model: Cruising Yacht

Price: PRICE ON APPLICATION

Location: United States

LOA: 42' (12.8mm)

Beam: 13.58

Max Draft: 4' 6" (1.37mm)

Cruise Speed: 17 Knots Kts. (20 MPH)

Max Speed: 22 Knots Kts. (25 MPH)

Our experienced yacht broker, Andrey Shestakov, will help you choose and buy a yacht that best suits your needs **Seaquell — LEGACY YACHTS** from our catalogue. Presently, at Shestakov Yacht Sales Inc., we have a wide variety of yachts available on our sale's list. We also work in close contact with all the big yacht manufacturers from all over the world.

If you would like to buy a yacht **Seaquell — LEGACY YACHTS** or would like help answering any questions concerning purchasing, selling or chartering a yacht, please call **+1(954)274-4435**

TABLE OF CONTENTS

TABLE OF CONTENTS	2
SPECIFICATIONS	5
Overview	5
Basic Information	5
Dimensions	5
Speed, Capacities and Weight	5
Accommodations	6
Hull and Deck Information	6
Engine Information	6
PHOTOS	7
2	7
3	7
4	7
5	7
6	7
7	7
8	8
9	8
11	8
10	8
12	8
13	8
14	9
15	9
16	9
17	9
18	9
19	9

21	10
20	10
22	10
23	10
24	11
25	11
26	11
27	11
28	11
29	11
30	12
31	12
32	12
33	12
34	12
35	12
36	13
37	13
38	13
39	13
40	13
41	13
42	14
43	14
44	14
45	14
46	14
47	14
48	15

49	15
50	15
51	15
52	15
53	15
54	16
55	16
56	16
57	16
58	17
59	17
60	17
61	17
62	17
63	17
64	18
65	18
CONTACTS	19
Contact details	19
Telephones	19
Office hours	19
Address	19

SPECIFICATIONS

Overview

Bow & Stern Thrusters Single Cummins QSM-11 660 HP Diesel Engine W/1672 Hours & Northern Lights 6kw Diesel Generator W/607 Hours SEAQUELL is a wonderful Mark Ellis designed 42 Legacy. She is loaded with upgrades and ready for her new owner! In 2018 the climate controlled pilothouse was converted to a fully enclosed hardback w/custom windows and door. There is also a stainless electric sunshade on the hardtop for covering the rear cockpit. With the single Cummins Diesel engine and bow & Stern thrusters this boat is both economical and easy to operate. SEAQUELL has been meticulously maintained and all service is up to date, don't miss out the opportunity to own this truly turn-key vessel!! Call today to schedule an appointment, viewings available seven days a week!

Basic Information

Category: Cruising Yacht

Sub Category: Downeast

Model Year: 2005

Year Built: 2005

Country: United States

Dimensions

LOA: 42' (12.8mm)

LWL: 38' 4" (11.68mm)

Beam: 13.58

Max Draft: 4' 6" (1.37mm)

Speed, Capacities and Weight

Cruise Speed: 17 Knots Kts. (20 MPH)

Max Speed: 22 Knots Kts. (25 MPH)

Water Capacity: 110 Gallons

Holding Tank: 40 Gal Gallons

Fuel Capacity: 450 Gal Gallons

Accommodations

Total Cabins: 1

Total Berths: 2

Total Heads: 1

Hull and Deck Information

Hull Material: Fiberglass

Hull Configuration: Modified V-Hull

Engine Information

Engines: 1

Manufacturer: Cummins

Engine Type: Inboard

Fuel Type: Diesel

PHOTOS

2



3



4



5



6



7



8



9



10



11



12



13



14



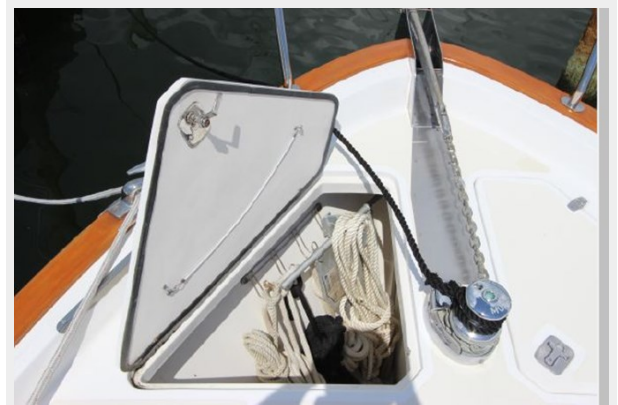
15



16



17



18



19



20



21



22



23



24



25



26



27



28



29



30



31



32



33



34



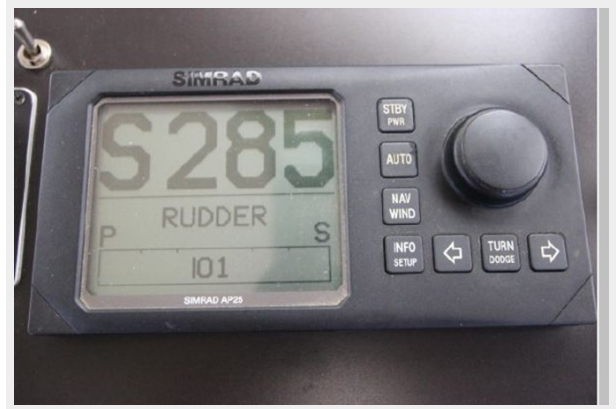
35



36



37



38



39



40



41



42



43



44



45



46



47



48



49



50



51



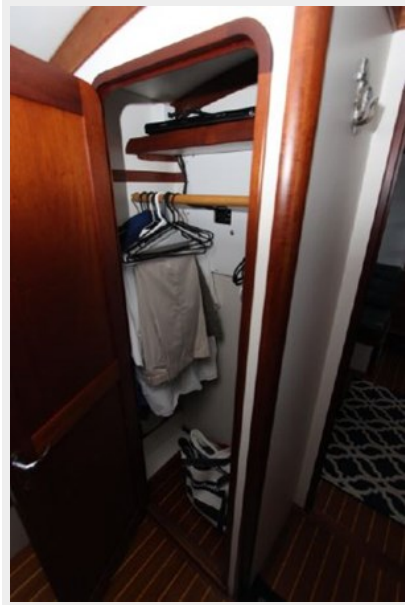
52



53



54



55



56



57



58



59



60



61



62



63



64



65



CONTACTS

Andrey Shestakov, leading yacht broker of the sales department of Shestakov Yacht Sales Inc. Shestakov Yacht Sales Inc., the official representative of the Miami/Fort Lauderdale FL headquarters.

Contact details

Email: andrey@shestakovyachtsales.com

Web: shestakovyachtsales.com/en/

Telephones

USA: +1(954)274-4435

Office hours

Monday – Saturday: **9:00 - 21:00** EDT

Sunday: **closed**

Address



Harbour Towne Marina, 850 NE 3rd St,
STE 213, Dania, FL 33004