

GADABAUT — GRAND BANKS



Builder: GRAND BANKS

Year Built: 1988

Model: Trawler Yacht

Price: PRICE ON APPLICATION

Location: United States

LOA: 42' (12.8mm)

Beam: 13.5

Max Draft: 4' 2" (1.27mm)

Cruise Speed: 9 Knots Kts. (10 MPH)

Our experienced yacht broker, Andrey Shestakov, will help you choose and buy a yacht that best suits your needs **Gadabaut — GRAND BANKS** from **our catalogue**. Presently, at **Shestakov Yacht Sales Inc.**, we have a wide variety of yachts available on **our sale's list**. We also work in close contact with all the big **yacht manufacturers** from all over the world.

If you would like to buy a yacht **Gadabaut — GRAND BANKS** or would like help answering any questions concerning purchasing, selling or chartering a yacht, please call **+1(954)274-4435**

TABLE OF CONTENTS

TABLE OF CONTENTS	2
SPECIFICATIONS	6
Overview	6
Basic Information	6
Dimensions	6
Speed, Capacities and Weight	6
Accommodations	6
Hull and Deck Information	7
Engine Information	7
PHOTOS	8
2	8
1	8
3	8
4	8
6	8
5	8
7	9
8	9
10	9
9	9
12	9
11	9
14	10
13	10
15	10
16	10
17	10
18	10

19	11
20	11
21	11
22	11
23	11
24	11
25	12
26	12
27	12
28	12
29	12
30	12
31	13
32	13
33	13
34	13
35	13
36	13
38	14
37	14
39	14
40	14
41	14
42	14
43	15
44	15
45	15
46	15
47	15

48	15
49	16
50	16
51	16
52	16
53	16
54	16
55	17
56	17
57	17
58	17
59	17
60	17
61	18
62	18
63	18
64	18
65	18
66	18
67	19
68	19
69	19
70	19
71	19
72	19
73	20
74	20
75	20
76	20

CONTACTS	21
Contact details	21
Telephones	21
Office hours	21
Address	21

SPECIFICATIONS

Overview

Gadabaut is a clean, well-maintained classic Grand Banks. She offers twin Ford Lehman 135 HP naturally aspirated main engines, Westerbeke 8 kW generator, dual Racor fuel filters for each main engine, Reverso oil change system, solar panels and a wind generator, 2 watermakers and custom systems monitoring. With an attainable height of 16'2", she is a perfect option for the Great Loop.

Basic Information

Category: Trawler Yacht

Model Year: 1988

Year Built: 1988

Country: United States

Dimensions

LOA: 42' (12.8mm)

Beam: 13.5

Max Draft: 4' 2" (1.27mm)

Speed, Capacities and Weight

Cruise Speed: 9 Knots Kts. (10 MPH)

Water Capacity: 180 Gallons

Holding Tank: 50 Gal Gallons

Fuel Capacity: 800 Gal Gallons

Accommodations

Total Cabins: 2

Total Berths: 2

Total Heads: 2

Hull and Deck Information

Hull Material: Fiberglass

Engine Information

Engines: 2

Manufacturer: Ford Lehman

Engine Type: Inboard

Fuel Type: Diesel

PHOTOS

1



2



3



4



5



6



7



8



9



10



11



12



13



14



15



16



17



18



19



20



21



22



23



24



25



26



27



28



29



30



31



32



33



34



35



36



37



38



39



40



41



42



43



44



45



46



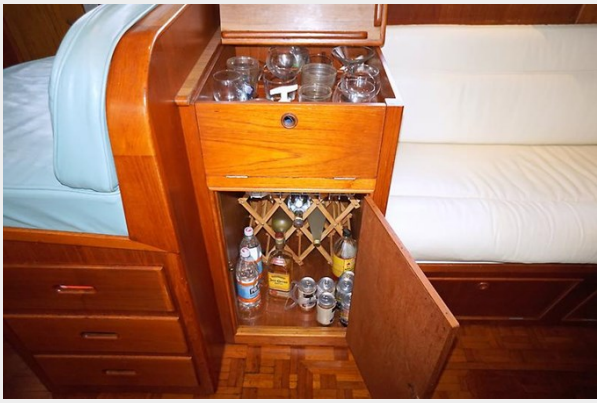
47



48



49



50



51



52



53



54



55



56



57



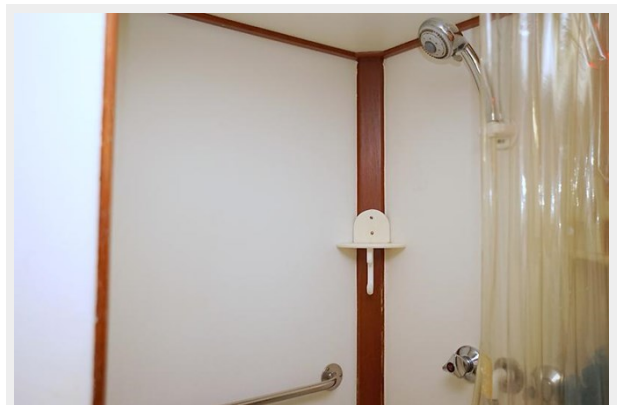
58



59



60



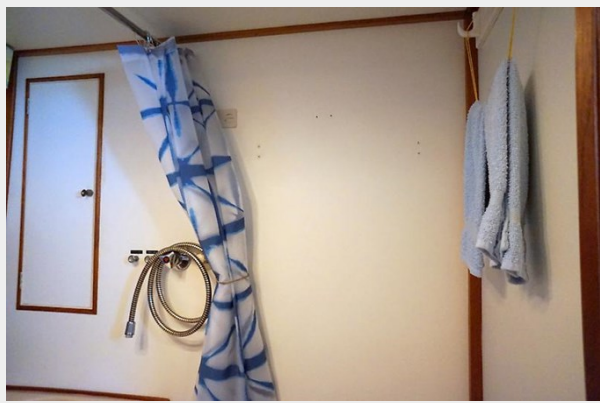
61



62



63



64



65



66



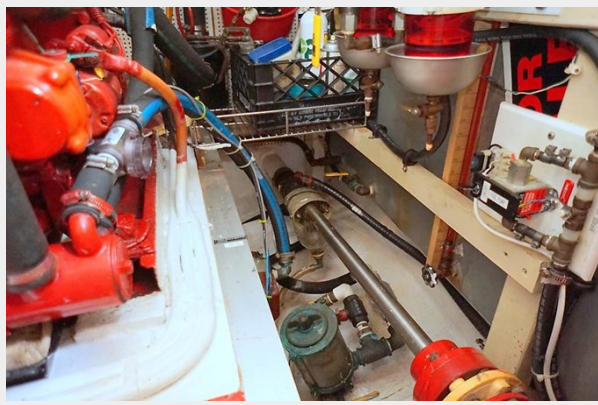
67



68



69



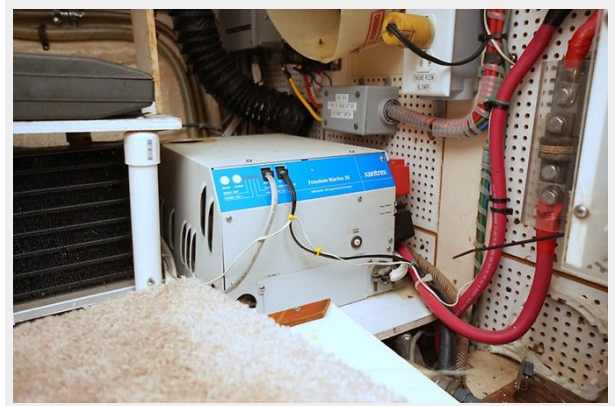
70



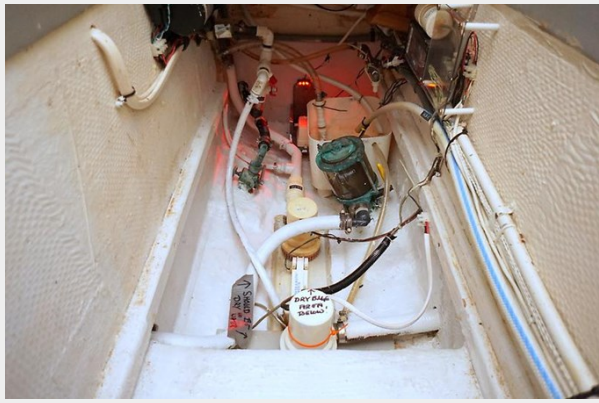
71



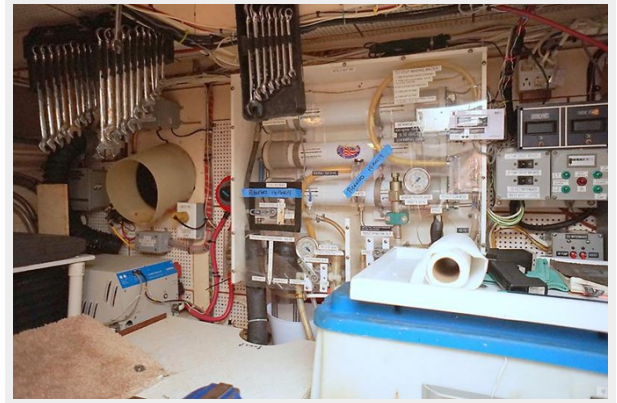
72



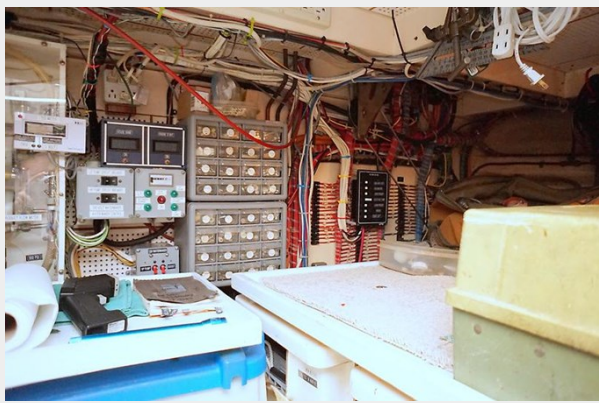
73



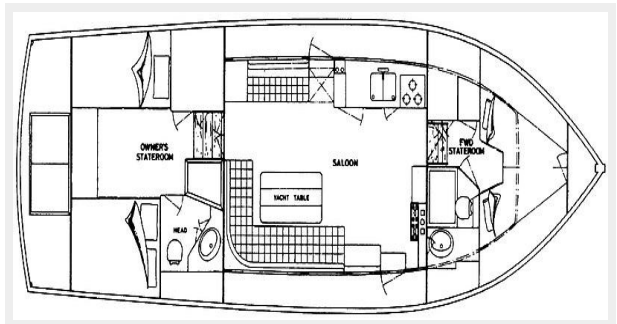
74



75



76



CONTACTS

Andrey Shestakov, leading yacht broker of the sales department of Shestakov Yacht Sales Inc. Shestakov Yacht Sales Inc., the official representative of the Miami/Fort Lauderdale FL headquarters.

Contact details

Email: **andrey@shestakovyachtsales.com**

Web: shestakovyachtsales.com/en/

Telephones

USA: **+1(954)274-4435**

Office hours

Monday – Saturday: **9:00 - 21:00** EDT

Sunday: **closed**

Address



Harbour Towne Marina, 850 NE 3rd St, STE 213, Dania, FL 33004