

## ENDLESS SUMMER — SEA RAY



**Судостроитель:** SEA RAY

**Год постройки:** 2012

**Модель:** Крейсер

**Цена:** \$599,000 USD

**Местонахождение:** United States

**Длина общая:** 54' (16.46m)

**Ширина:** 15.25

**Макс. осадка:** 4' 2" (1.27m)

Купить **Endless Summer — SEA RAY** а также выбрать подходящую вам яхту из нашего каталога яхт вам поможет опытный яхтенный брокер Андрей Шестаков. На сегодняшний день компания **Shestakov Yacht Sales Inc.** имеет большое количество яхт в собственном списке продаж, а также тесно сотрудничает со всеми крупными яхтенными производителями по всему миру.

Для того чтобы купить яхту **Endless Summer — SEA RAY** а также проконсультироваться по любому вопросу связанному с покупкой, продажей, чартером яхт позвоните по телефону **+7(918)465-66-44**.

# ОГЛАВЛЕНИЕ

---

ОГЛАВЛЕНИЕ	2
ХАРАКТЕРИСТИКИ	5
Обзор	5
Основная информация	9
Размеры	10
Скорость, вместимость и масса	10
Размещение	10
Корпус и палуба	10
Информация о двигателе	10
ФОТОГРАФИИ	11
IMG_2250	11
IMG_0121	11
IMG_1852	11
IMG_1853	11
IMG_1854	11
IMG_1859	11
IMG_1861	12
IMG_1858	12
IMG_1844	12
IMG_1786	12
IMG_2242	13
IMG_1847	13
54 9	13
54 18	13
54 2	13
54 17	13
54 3	14
54 4	14

54 7	14
54 5	14
54 6	14
54 24	14
54 25	15
54 14	15
54 10	15
54 19	15
IMG_1878	15
54 11	15
54 12	16
54 13	16
54 20	16
54 22	16
54 23	16
IMG_1862	16
engine1	17
engine2	17
engine3	17
engine4	17
engine5	17
IMG_1780	17
IMG_1782	18
IMG_1783	18
IMG_1785	18
prop1	18
prop2	18
prop3	18
IMG_0127	19

---

IMG_0128	19
КОНТАКТЫ	20
Контактная информация	20
Телефоны	20
Время работы	20
Адрес	20

# ХАРАКТЕРИСТИКИ

## Обзор

Endless Summer has June 2020 1,000 hours service completed. October 2020 new bottom paint, prop speed, full wax and detail! Additional Specs, Equipment and Information: SpecsHull Shape: Semi-DisplacementDimensionsLOA: 54 ft 9 inBeam: 15 ft 3 inMaximum Draft: 4 ft 2 inDisplacement: 46901 lbsDeadrise: 21 ° at TransomDry Weight: 50000 lbsEnginesEngine 1:Engine Brand: CumminsYear Built: 2012Engine Model: Cummins QSC-600 DTSEngine Type: InboardEngine/Fuel Type: DieselLocation: StarboardEngine Hours: 554Drive Type: Pod DriveEngine Power: 576 HPEngine 2:Engine Brand: CumminsYear Built: 2012Engine Model: Cummins QSC-600 DTSEngine Type: InboardEngine/Fuel Type: DieselLocation: PortEngine Hours: 600Drive Type: Pod DriveEngine Power: 576 HPTanksFresh Water Tanks: 1 (150 Gallons)Fuel Tanks: 1 (600 Gallons)Holding Tanks: 1 (68 Gallons)AccommodationsNumber of single berths: 6Number of heads: 2ElectronicsPlotterDVD playerTV setRadarNavigation centerAutopilotLog-speedometerCD playerGPSVHFDepthsounderRadioCockpit speakersCompassInside EquipmentSea water pumpDeep freezerAir conditioningElectric bilge pumpHot waterMarine headHeatingRefrigeratorMicrowave ovenWashing machineBattery chargerBow thrusterElectrical EquipmentShore power inletGeneratorOutside Equipment/ExtrasTeak sidedecksSwimming ladderCockpit showerCockpit tableCockpit cushionsTeak cockpit

### Manufacturer Provided Description

The Sea Ray 540 Sundancer is sure to earn jealous stares from the competition because it once again redefines what a modern express cruiser should be: sleek and distinctive exterior; inviting and thoughtful interior; flexible and intuitive entertaining spaces; and innovative features and amenities.

### Key Features

- Cummins MerCruiser QSC 600 diesel engines with Zeus pod drives
- Zeus Drive System includes Skyhook Station-Keeper technology
- SmartCraft instrumentation and VesselView display
- One-piece bilge access service hatch.
- Standard dual Raymarine E120 widescreen units with 4-kW high definition radar
- Cockpit convertible seat lounge
- Interior LED Lighting
- Sirius satellite receiver with antenna (N/A outside N. America)
- Salon 32" flatscreen TV.
- Fold-out salon sofa sleeper conversion.
- Fiberglass hardtop with enclosure.
- Isolation transformer.
- Water manifold system.

- Oil changer system for engines and generator
- 68-Gallon holding tank with dockside pump-out.
- Sea Ray Owners Club membership (available in USA and Canada).

**Engine Notes**MAN also available.

## Cockpit

- Beverage Holders (11)
- Carpet Liner, Snap-In - Cockpit
- Door, Cabin Entry w/Color-Matched Frame & Tempered/Tinted Glass (Sliding & Lockable w/Screen)
- Door, Transom - Acrylic w/Stainless- Steel Frame
- Floor Liner, Self-Bailing Fiberglass w/Gas-Assisted Engine Room Service Hatch
- Handrails, 316 Stainless Steel
- Hardtop, Fiberglass w/Retractable Sunroof, Overhead Lighting & Electronic Dimmer
- Icemaker, 120V
- Lighting, 24V LED
- Outlet, 120V GFI Protected
- Outlet, 24V Accessory
- Outlet, Cable TV
- Seating, Aft - L-Shaped w/Fiberglass Storage Bases & Hinged Cushions
- Seating, Helm (2) w/Armrests, Reclining Backrests, Teak Footrests, Heavy-Duty Adjustable Pedestals & Pivoting Fiberglass Base
- Seating, Starboard Lounger - Forward
- Ship's Bell
- Steps, Boarding (Molded-In) - Starboard
- Steps, Molded Deck Access (From Transom)
- Stereo, Sony - 12V AM/FM:- Single CD Player- Sirius Satellite Receiverw/Antenna- iPod Interface w/Docking Station- MP3 Port- Amplifier, Subwoofer, Speakers (4)- Digital Cockpit Remote Control
- Storage, Side Panel - Port Cockpit
- Sun Pad, Aft Cockpit Conversion w/Upper & Lower Storage Below
- Table, Cockpit - Fiberglass
- Wet Bar w/Fiberglass Sink, Faucet, Stainless-Steel Handrail, Solid-Surface Countertop, Trash Receptacle w/Trash Chute & Carry-On Cooler - Starboard

## Cabin

- Blinds, Silver Alloy
- Carbon Monoxide Monitors
- Carpet Runners, Interior (Sunbrella)
- Carpet, 55-Ounce 100% Stainmaster BCF Nylon w/Dupont Advanced Teflon Repel System
- Doors, High-Gloss Solid Wood

- Handrails, Stainless Steel
- Lighting, 120V LED
- Lighting, 24V Indirect LED
- Lighting, 24V LED
- Outlet & Switch Plates - Polished Chrome Finish
- Outlet, 24V Accessory
- Outlets, 120V GFI Protected
- Outlets, Phone
- Pillows, Accent
- Storage, In-Floor
- Wood Interior Finish - Cherry, Walnut or Rift Oak

## Galley

- Coffeemaker, 120V
- Countertop, Solid Surface w/Stainless-Steel Sink, Single-Lever Faucet w/Pullout Spray Head & Solid-Surface Sink Cover
- Flooring, Wood
- Freezer, Under Counter - 120V
- Microwave/Convection Oven w/Stainless-Steel Face - 120V
- Power Vent, 24V
- Refrigerator, Under Counter - 120V
- Storage, Cabinets - Upper & Lower
- Storage, Drawers w/Cutlery Insert
- Stove - Two Burner w/Pop-Up Cookware Retainers
- Trash Receptacle

## Salon

- Entertainment Center:- Bose Lifestyle 48, 5.1-Channel Home Theater System Includes: Bose Media Center (Interfaced w/Sirius Satellite Receiver), Jewel Cube Speakers (4), Horizontal Center Channel Speaker & Acoustimass Module- Storage Cabinet - CD & DVD- TV, 32" Flatscreen LCD HDTV- RTIT3 Universal Remote Control
- Flooring - Wood
- Mirror, Wall Accent
- Seating, Sofa (Ultraleather) w/Pullout Bed - Starboard
- Steps, Entryway - Teak w/Stainless-Steel Handrail
- Storage, Gunwale Cabinets
- Table, Convertable Dining/Coffee (Movable) w/High-Gloss Wood Surface & Storage Below

## Master Stateroom

- Bed, Queen-Size w/Innerspring Mattress, Pillows, Sheets, Coordinated Spread, Drawers

### & Storage Below

- Entertainment Center:- Bose Lifestyle 321, 2.1-Channel Home Entertainment System Includes: Bose Media Center, Gemstone Speaker Arrays (2) & Acoustimass Module- TV, 32" Flatscreen LCD
- Mirror, Large - Trimmed - Aft Bulkhead
- Storage, Side Shelves

## Master Head/Shower

- Bath Accessories - Towel Rings (2), Bathroom Tissue Holder, Soap Dish & Robe Hooks (3)
- Blinds
- Door, Privacy (Access to Stateroom)
- Flooring, Tile - Shower & Head
- Handrails, Stainless Steel
- Hanging Locker, Cedar Lined w/Drawer Storage Below
- Head, (VacuFlush®) - Electric
- Mirror, Full Length
- Power Vent, 24V
- Shower w/Teak Seat, Adjustable Shower Wand & Acrylic Door
- Storage, Shelves - Dedicated Toiletry
- Towels - Sea Ray
- Vanity w/Solid-Surface Countertop, Tile Backsplash, Undermount Sink w/Faucet & Storage Below w/Trash Receptacle

## Forward Stateroom

- Bed, Queen-Size Island Style w/Innerspring Mattress, Pillows, Sheets & Coordinated Spread w/Storage Below
- Entertainment Center:- Bose Direct Reflecting Cube Speakers (2), Acoustimass Module & SA-3 Amplifier- TV, 19" Flatscreen LCD- DVD Player
- Flooring, Wood
- Hanging Locker, Cedar Lined w/Shoji Doors
- Shades, Roman
- Storage, Gunwale Shelves

## Forward Head/Shower

- Bath Accessories - Towel Bar, Bathroom Tissue Holder, Soap Dish & Robe Hook
- Flooring, Tile
- Handrails, Stainless Steel
- Head, (VacuFlush) - Electric
- Power Vent, 24V
- Shower w/Teak Seat, Adjustable Shower Wand & Acrylic Door



- Storage, Medicine Cabinet - Mirrored
- Towels - Sea Ray
- Vanity w/Solid-Surface Countertop, Tile Backsplash, Undermount Sink w/Faucet & Storage Below w/Trash Receptacle

## Hull and Deck

- Bottom Paint - (white hulls only)
- Bow Rail, 316 Stainless Steel w/Welded Stanchions, Intermediate Rails & Life Lines
- Cleats, Custom Sea Ray Thru-Bolted Bollard Style - Stainless Steel (8)
- Deck Fill Plates, Stainless Steel
- Deck Rails, 316 Stainless Steel
- Gel Coat - Arctic White
- Graphics, Striping
- Handrails, 316 Stainless Steel
- Hatch, Deck Vent - Translucent w/Locks & Sky Screen Cover (Trapezoid)
- Hull Windows, Color-Matched Aluminum (8 Fixed)
- Lights, Navigation
- Portlights, Stainless Steel (2 Opening, 4 Fixed)
- Resin, High-Performance Vinylester
- Rub Rail, PVC w/Stainless-Steel Insert
- Skylight, Flush Mount w/Retractable Sunshade - Salon
- Stringer System, Fiberglass
- Sun Pad, Forward Deck w/Adjustable Backrests, Cover & Built-In Drink Holders
- Swim Platform, Extended w/Concealed Stainless-Steel Four-Step Swim Ladder
- Thru-Hull Fittings, Stainless Steel
- Vent System, Engine Room w/Stainless-Steel Grills
- Windshield Washer System
- Windshield Wipers, 24V
- Windshield, Tempered/Tinted Curved Glass w/Electric Front Vent & Side Windows

## Основная информация

**Тип судна:** Крейсер

**Подкатегория:** Express

**Модельный год:** 2012

**Год постройки:** 2012

**Страна:** United States

## Размеры

---

Длина общая: 54' (16.46mm)

Ширина: 15.25

Макс. осадка: 4' 2" (1.27mm)

## Скорость, вместимость и масса

---

Вместимость воды: 150 Gallons

Вместимость сточного бака: 68 Gal  
Gallons

Объем топливного бака: 600 Gal Gallons

## Размещение

---

Всего кают: 2

Всего ком. состава: 2

## Корпус и палуба

---

Материал корпуса: Fiberglass

Комплектация корпуса: Semi-  
Displacement

## Информация о двигателе

---

Двигатели: 2

Производитель: Cummins

Тип двигателя: Inboard

Тип топлива: Diesel

# ФОТОГРАФИИ

IMG\_0121



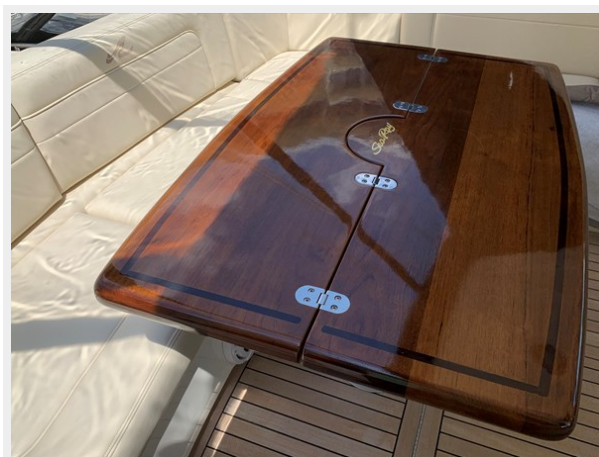
IMG\_2250



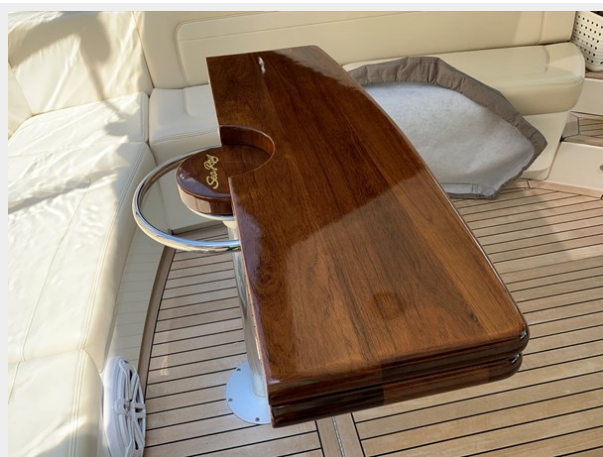
IMG\_1852



IMG\_1853



IMG\_1854



IMG\_1859



IMG\_1861



IMG\_1858



IMG\_1844



IMG\_1786



IMG\_1847



IMG\_2242



54 9



54 18



54 2



54 17



54 3



54 4



54 7



54 5



54 6



54 24



54 25



54 14



54 10



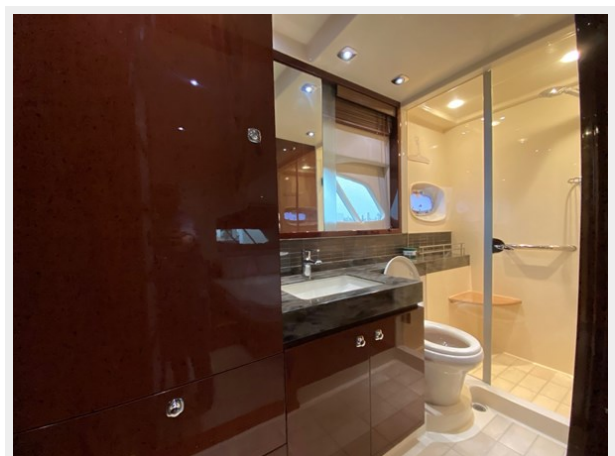
54 19



IMG\_1878



54 11



54 12



54 13



54 20



54 22



54 23



IMG\_1862





**engine1**



**engine2**



**engine3**



**engine4**



**enigne5**



**IMG\_1780**



IMG\_1782



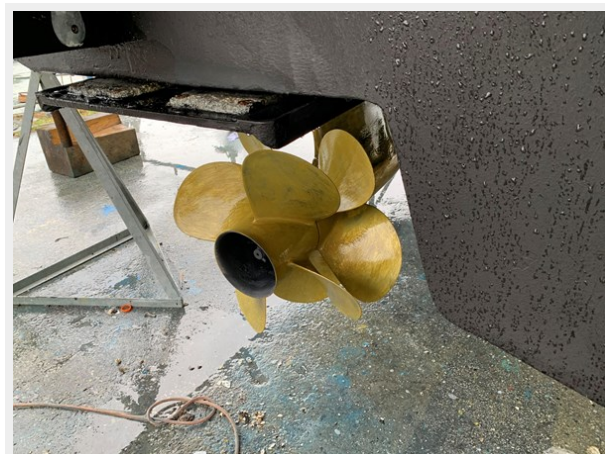
IMG\_1783



IMG\_1785



prop1



prop2



prop3



IMG\_0127



IMG\_0128



# КОНТАКТЫ

---

Андрей Шестаков (Andrey Shestakov) – ведущий яхтенный брокер отдела продаж яхт и судов компании Shestakov Yacht Sales Inc. Официальный представитель Shestakov Yacht Sales Inc. для русскоговорящих клиентов в центральном офисе компании в Майами/Форт Лодердейл/Флорида/США.

## Контактная информация

---

Email: [andrey@shestakovyachtsales.com](mailto:andrey@shestakovyachtsales.com)

Web: [shestakovyachtsales.com](http://shestakovyachtsales.com)

## Телефоны

---

Краснодарский край: **+7(918)465-66-44**

США, Майами, Флорида: **+1(954)274-4435**

## Время работы

---

Понедельник – Суббота: **9:00 - 21:00**  
EDT

Воскресенье: **Закрето**

## Адрес

---



Harbour Towne Marina, 850 NE 3rd St,  
STE 213, Dania, FL 33004