

EL CARAN — BENETTI



Builder: BENETTI

Year Built: 1977

Model: Motor Yacht

Price: PRICE ON APPLICATION

Location: Italy

LOA: 128' 3" (39.08mm)

Beam: 23.62

Max Draft: 12' 10" (3.9mm)

Cruise Speed: 10 Knots Kts. (12 MPH)

Max Speed: 12 Knots Kts. (14 MPH)

Our experienced yacht broker, Andrey Shestakov, will help you choose and buy a yacht that best suits your needs **EL CARAN — BENETTI** from **our catalogue**. Presently, at **Shestakov Yacht Sales Inc.**, we have a wide variety of yachts available on **our sale's list**. We also work in close contact with all the big **yacht manufacturers** from all over the world.

If you would like to buy a yacht **EL CARAN — BENETTI** or would like help answering any questions concerning purchasing, selling or chartering a yacht, please call **+1(954)274-4435**

TABLE OF CONTENTS

TABLE OF CONTENTS	2
SPECIFICATIONS	4
Overview	4
Basic Information	4
Dimensions	4
Speed, Capacities and Weight	4
Accommodations	5
Hull and Deck Information	5
Engine Information	5
PHOTOS	6
LDC_62951949 (FILEminimizer)	6
LDC_62952668 (FILEminimizer)	6
20200930_182725 (FILEminimizer)	6
20200930_171238 (FILEminimizer)	6
20201014_131050 (FILEminimizer)	6
20200930_160403 (FILEminimizer)	6
20200930_161125 (FILEminimizer)	7
20200930_161155 (FILEminimizer)	7
VT9B7217 (FILEminimizer)	7
VT9B7215 (FILEminimizer)	7
VT9B7148 (FILEminimizer)	7
20201014_130821 (FILEminimizer)	7
20201014_130728 (FILEminimizer)	8
20201014_130742 (FILEminimizer)	8
20200930_160621 (FILEminimizer)	8
20200930_160821 (FILEminimizer)	8
20201014_131156 (FILEminimizer)	8
20201014_131214 (FILEminimizer)	8

20201014_131317 (FILEminimizer)	9
20201014_131305 (FILEminimizer)	9
20201014_132400 (FILEminimizer)	9
20201014_132510 (FILEminimizer)	9
20201014_131606 (FILEminimizer)	9
20201014_131500 (FILEminimizer)	9
20201014_131640 (FILEminimizer)	10
20201014_131706 (FILEminimizer)	10
20201014_131746 (FILEminimizer)	10
20201014_131824 (FILEminimizer)	10
20201014_131914 (FILEminimizer)	10
20200930_170329 (FILEminimizer)	10
20201014_132606 (FILEminimizer)	11
20201014_130942 (FILEminimizer)	11
20201014_132846 (FILEminimizer)	11
VT9B7223 (FILEminimizer)	11
CONTACTS	12
Contact details	12
Telephones	12
Office hours	12
Address	12

SPECIFICATIONS

Overview

El Caran is a full displacement classic Benetti Yacht built in 1977 who just came through on a 2 years FULL DEEP refit of more than 4mlns of euros!

She is now finally back to the sea, ready to cruise in “must-see condition”!

She can accomodates up to 12 guests in 6 cabins with an on deck master, carrying up to 7 crew and equipped with FIN stabilizers.

HD pics & videos are available and she will be lying in Valencia, awaiting to wellcome you on board!

In 2022: main engines and generators just fully overhauled/rebuilt during the winter!

Basic Information

Category: Motor Yacht

Sub Category: Displacement

Model Year: 1977

Year Built: 1977

Country: Italy

Dimensions

LOA: 128' 3" (39.08mm)

Beam: 23.62

Max Draft: 12' 10" (3.9mm)

Speed, Capacities and Weight

Cruise Speed: 10 Knots Kts. (12 MPH) **Max Speed:** 12 Knots Kts. (14 MPH)

Water Capacity: 27000 Gallons

Fuel Capacity: 14793.63 Gal Gallons

Fuel Consumption: 39.63 Gal Gallons

Accommodations

Total Cabins: 6

Sleeps: 12

Total Heads: 8

Hull and Deck Information

Hull Material: Steel

Deck Material: Teak

Hull Configuration: Full Displacement

Hull Color: WHITE

Engine Information

Engines: 2

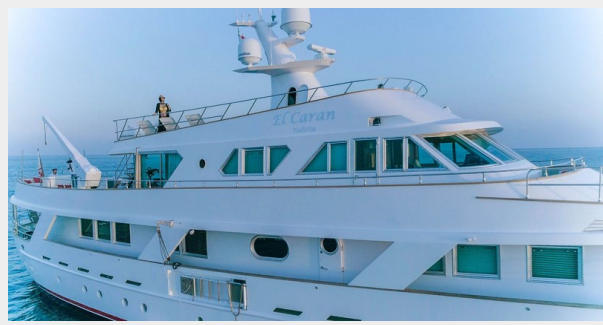
Manufacturer: MTU

Engine Type: Inboard

Fuel Type: Diesel

PHOTOS

LDC_62951949 (FILEminimizer)



LDC_62952668 (FILEminimizer)



20200930_182725 (FILEminimizer)



20200930_171238 (FILEminimizer)



20201014_131050 (FILEminimizer)



20200930_160403 (FILEminimizer)



20200930_161125 (FILEminimizer)



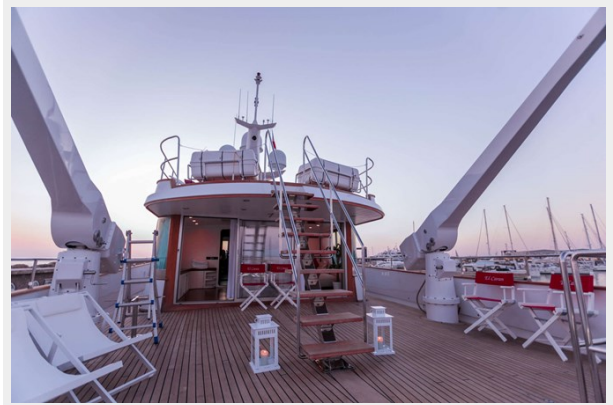
20200930_161155 (FILEminimizer)



VT9B7217 (FILEminimizer)



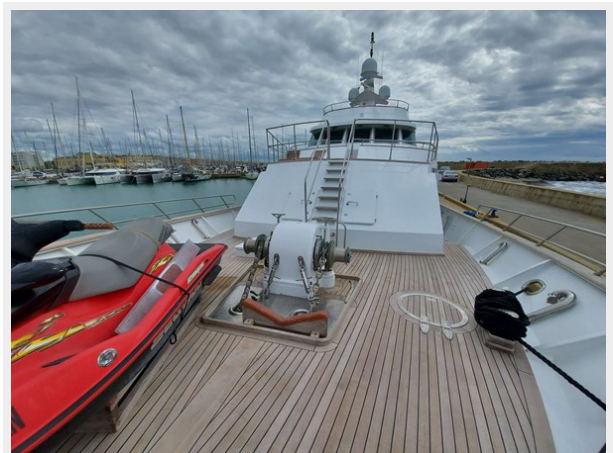
VT9B7215 (FILEminimizer)



VT9B7148 (FILEminimizer)



20201014_130821 (FILEminimizer)



20201014_130728 (FILEminimizer)



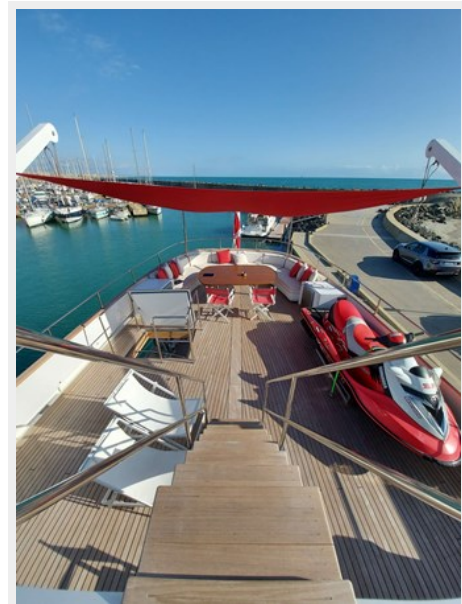
20201014_130742 (FILEminimizer)



20200930_160621 (FILEminimizer)



20200930_160821 (FILEminimizer)



20201014_131156 (FILEminimizer)



20201014_131214 (FILEminimizer)



20201014_131317 (FILEminimizer)



20201014_131305 (FILEminimizer)



20201014_132400 (FILEminimizer)



20201014_132510 (FILEminimizer)



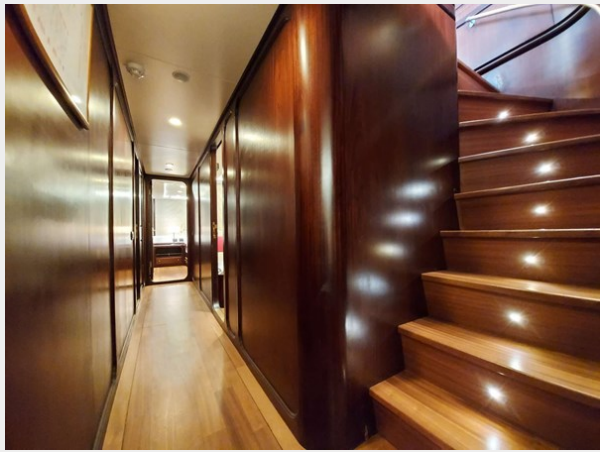
20201014_131500 (FILEminimizer)



20201014_131606 (FILEminimizer)



20201014_131640 (FILEminimizer)



20201014_131706 (FILEminimizer)



20201014_131746 (FILEminimizer)



20201014_131824 (FILEminimizer)



20201014_131914 (FILEminimizer)



20200930_170329 (FILEminimizer)



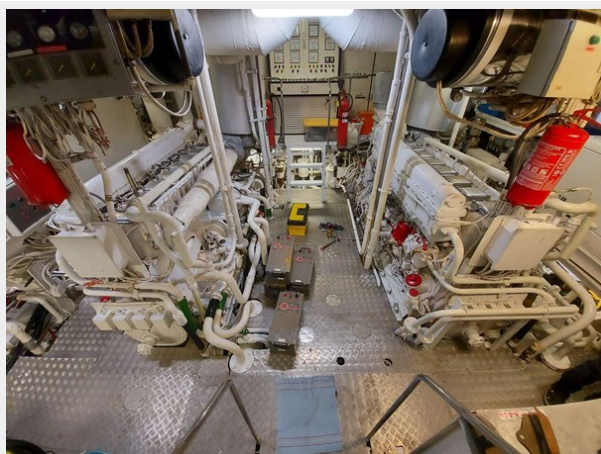
20201014_132606 (FILEminimizer)



20201014_130942 (FILEminimizer)



20201014_132846 (FILEminimizer)



VT9B7223 (FILEminimizer)



CONTACTS

Andrey Shestakov, leading yacht broker of the sales department of Shestakov Yacht Sales Inc. Shestakov Yacht Sales Inc., the official representative of the Miami/Fort Lauderdale FL headquarters.

Contact details

Email: **andrey@shestakovyachtsales.com**

Web: shestakovyachtsales.com/en/

Telephones

USA: **+1(954)274-4435**

Office hours

Monday – Saturday: **9:00 - 21:00** EDT

Sunday: **closed**

Address



Harbour Towne Marina, 850 NE 3rd St, STE 213, Dania, FL 33004