

MY WAY V — MONDO MARINE



Builder: MONDO MARINE

Year Built: 2005

Model: Commercial Vessel

Price: PRICE ON APPLICATION

Location: Monaco

LOA: 131' 5" (40.05mm)

Beam: 25.59

Min Draft: 8' 1" (2.46mm)

Cruise Speed: 15 Knots Kts. (17 MPH)

Max Speed: 17 Knots Kts. (20 MPH)

Our experienced yacht broker, Andrey Shestakov, will help you choose and buy a yacht that best suits your needs **MY WAY V — MONDO MARINE** from **our catalogue**. Presently, at **Shestakov Yacht Sales Inc.**, we have a wide variety of yachts available on **our sale's list**. We also work in close contact with all the big **yacht manufacturers** from all over the world.

If you would like to buy a yacht **MY WAY V — MONDO MARINE** or would like help answering any questions concerning purchasing, selling or chartering a yacht, please call **+1(954)274-4435**

TABLE OF CONTENTS

TABLE OF CONTENTS	2
SPECIFICATIONS	3
Overview	3
Basic Information	3
Dimensions	3
Speed, Capacities and Weight	4
Accommodations	4
Hull and Deck Information	4
Engine Information	4
PHOTOS	5
5574brochure1	5
swim platform with water toys	5
5574brochure4	5
5574brochure12	5
5574brochure10	5
3URLVtKdJe5IXQSIxSRIUbojQGtg9eE1.big.jpg	5
5574brochure2	6
5574brochure11	6
5574brochure6	6
5574brochure9	6
5574brochure7	6
CONTACTS	7
Contact details	7
Telephones	7
Office hours	7
Address	7

SPECIFICATIONS

Overview

MY WAY V: lovely Italian design ~ Jacuzzi on flybridge ~ spacious upper deck with alfresco dining ~ large and elegant main deck saloon ~ on deck Master suite ~ underway & at anchor stabilisers ~ air-conditioning ~WiFi

MY WAY V offers fabulous spaces to her guests spreading over four expansive decks. The flydeck is home to the very popular Jacuzzi spa tub and a spacious sunbathing area with sun pads, as well as a seating area and a bar.

The upper deck provides a fabulous alfresco dining possibility on the aft deck. On the inside, the upper deck saloon is elegant with light coloured sofa and armchairs and a bar with stools. Large glazed doors open up to the aft deck to create a nice flow between the interiors and the exterior areas. Forward on the upper deck is yet another area for sunbathing with an additional table for light refreshments.

Moving down onto the main deck, there is a large aft exterior area with seating that leads down to the extendable swim platform. The main saloon offers a large sofa and armchairs around a low coffee table and a formal dining area adjacent. In the forward section of the yacht is the spacious owner suite with private ensuite bathroom facilities.

Basic Information

Category: Commercial Vessel

Model Year: 2005

Year Built: 2005

Refit Type: large

Country: Monaco

Dimensions

LOA: 131' 5" (40.05mm)

Beam: 25.59

Min Draft: 8' 1" (2.46mm)

Speed, Capacities and Weight

Cruise Speed: 15 Knots Kts. (17 MPH) **Cruise Speed Range:** 1500

Max Speed: 17 Knots Kts. (20 MPH) **Gross Tonnage:** 339 Pounds

Water Capacity: 7000 Gallons **Fuel Capacity:** 12812.34 Gal Gallons

Fuel Consumption: 92.46 Gal Gallons

Accommodations

Total Cabins: 5

Total Berths: 12

Sleeps: 10

Crew Cabin: 8

Crew Berths: 8

Hull and Deck Information

Hull Material: Aluminum

Deck Material: Aluminum

Hull Configuration: Semi-Displacement **Hull Color:** BLUE

Exterior Designer: Luca Dini Design. **Interior Designer:** Cor D. Rover

Engine Information

Engines: 2

Manufacturer: MTU

Engine Type: Inboard

Fuel Type: Diesel

PHOTOS

5574brochure1



swim platform with water toys



5574brochure4



5574brochure12



5574brochure10



3URLVtKdJe5lXQSlxSRIUbojQGtg9eE1.big.jpg



5574brochure2



5574brochure11



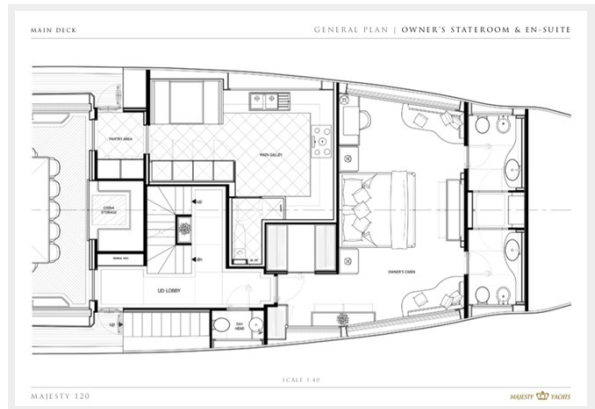
5574brochure6



5574brochure9



5574brochure7



CONTACTS

Andrey Shestakov, leading yacht broker of the sales department of Shestakov Yacht Sales Inc. Shestakov Yacht Sales Inc., the official representative of the Miami/Fort Lauderdale FL headquarters.

Contact details

Email: **andrey@shestakovyachtsales.com**

Web: shestakovyachtsales.com/en/

Telephones

USA: **+1(954)274-4435**

Office hours

Monday – Saturday: **9:00 - 21:00** EDT

Sunday: **closed**

Address



Harbour Towne Marina, 850 NE 3rd St, STE 213, Dania, FL 33004