

SILKY — JIM SMITH



Builder: [JIM SMITH](#)

Year Built: 2006

Model: Convertible

Price: \$3,795,000 USD

Location: United States

LOA: 85' (25.91mm)

Beam: 21.41

Max Draft: 4' 6" (1.37mm)

Cruise Speed: 35 Knots Kts. (40 MPH)

Max Speed: 41 Knots Kts. (47 MPH)

Our experienced yacht broker, Andrey Shestakov, will help you choose and buy a yacht that best suits your needs **Silky — JIM SMITH** from our catalogue. Presently, at Shestakov Yacht Sales Inc., we have a wide variety of yachts available on our sale's list. We also work in close contact with all the big yacht manufacturers from all over the world.

If you would like to buy a yacht **Silky — JIM SMITH** or would like help answering any questions concerning purchasing, selling or chartering a yacht, please call **+1(954)274-4435**

TABLE OF CONTENTS

TABLE OF CONTENTS	2
SPECIFICATIONS	3
Overview	3
Basic Information	3
Dimensions	3
Speed, Capacities and Weight	3
Accommodations	3
Hull and Deck Information	4
Engine Information	4
PHOTOS	5
Bottom Job and Hull Sides Waxed 11-2021	18
Bottom Job and Hull Sides Waxed 11-2021	18
Bottom Job and Hull Sides Waxed 11-2021	18
Bottom Job and Hull Sides Waxed 11-2021	19
Stern View on the Hard	19
CONTACTS	20
Contact details	20
Telephones	20
Office hours	20
Address	20

SPECIFICATIONS

Overview

2006 Jim Smith 85' Convertible Sportfish

Bottom Job and Hull Sides Waxed - November 2021

Basic Information

Category: Convertible

Sub Category: Convertible

Model Year: 2006

Year Built: 2006

Country: United States

Dimensions

LOA: 85' (25.91mm)

Beam: 21.41

Max Draft: 4' 6" (1.37mm)

Speed, Capacities and Weight

Cruise Speed: 35 Knots Kts. (40 MPH)

Max Speed: 41 Knots Kts. (47 MPH)

Water Capacity: 420 Gallons

Fuel Capacity: 3300 Gal Gallons

Accommodations

Total Cabins: 5

Total Heads: 5

Crew Berths: 2

Crew Heads: 1

Hull and Deck Information

Hull Material: Fiberglass

Engine Information

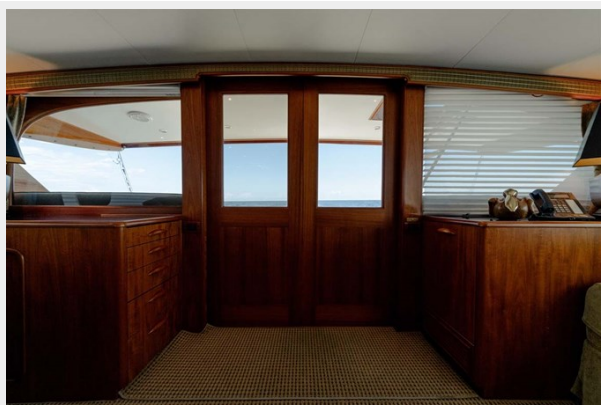
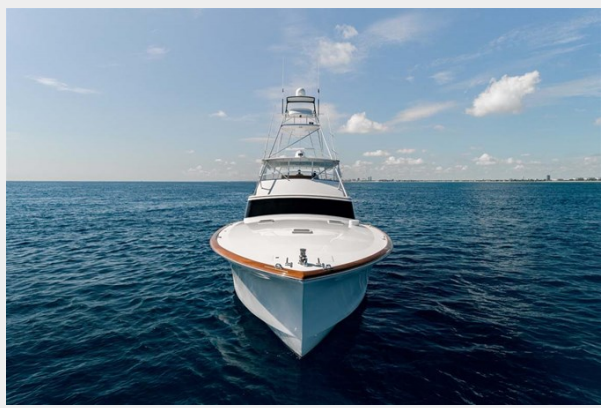
Engines: 2

Manufacturer: Detroit Diesel

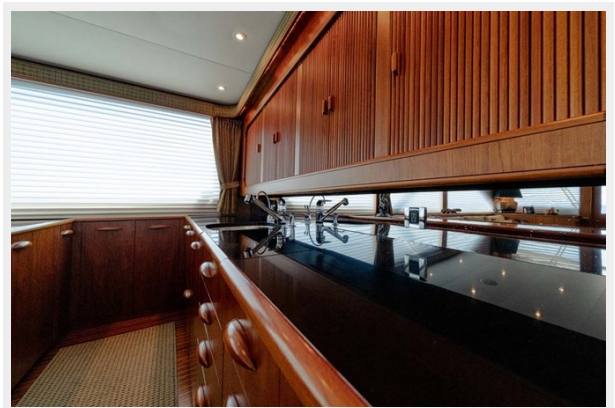
Engine Type: Inboard

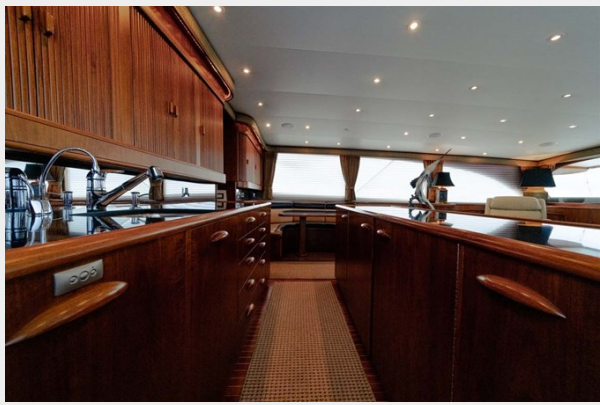
Fuel Type: Diesel

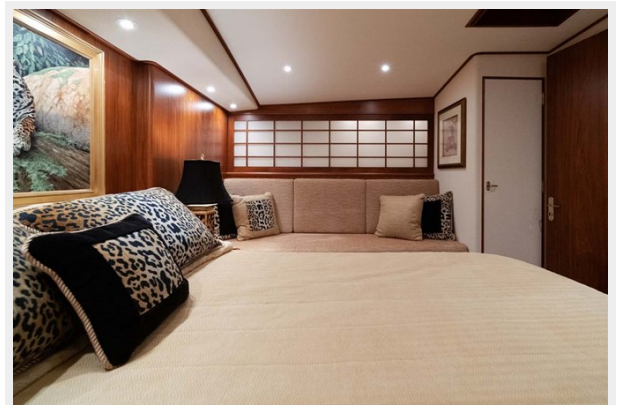
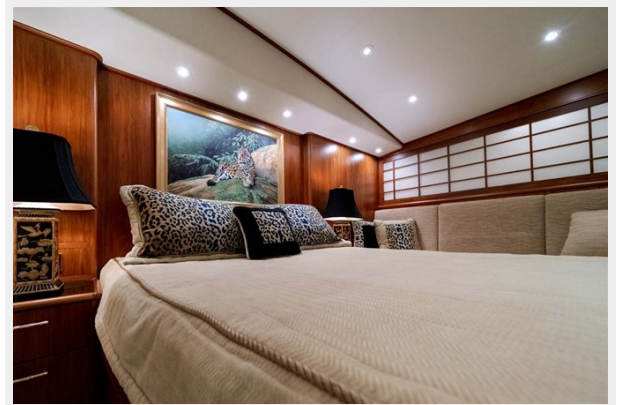
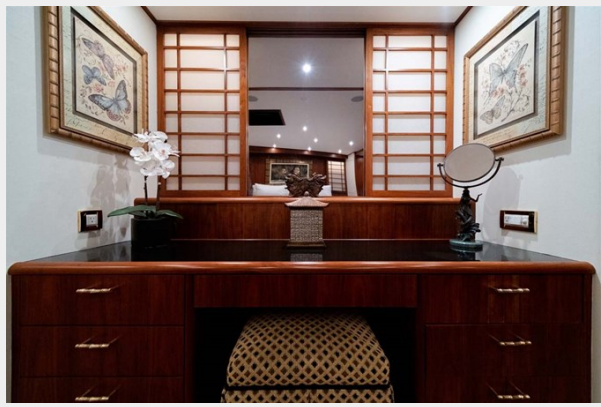
PHOTOS





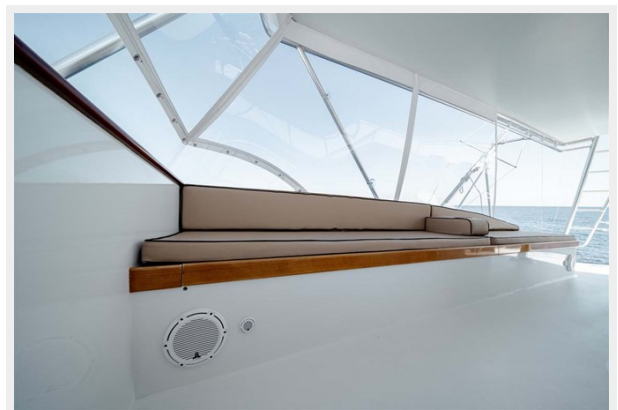
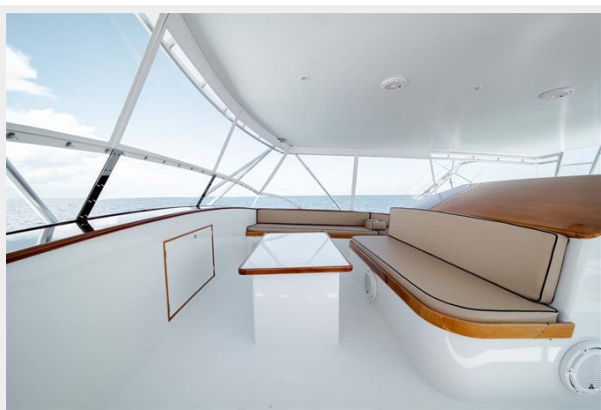
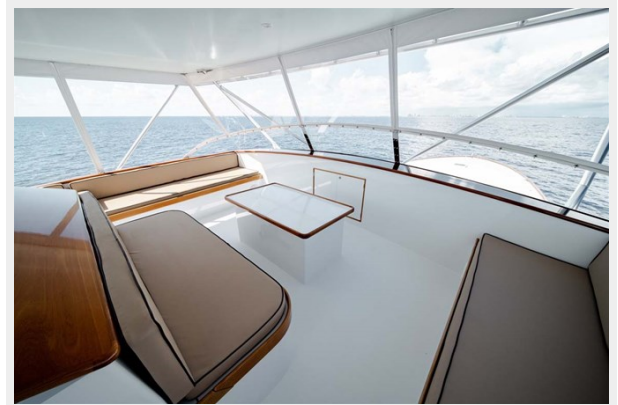
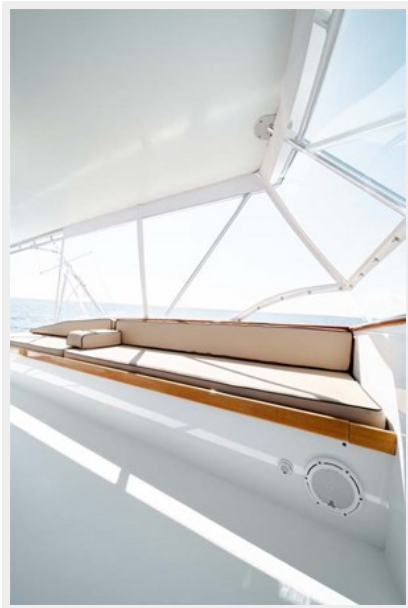




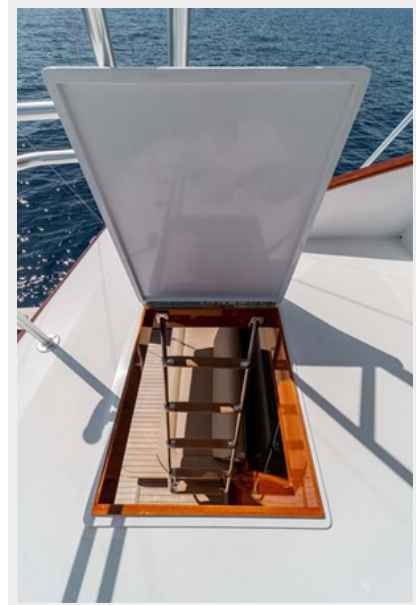
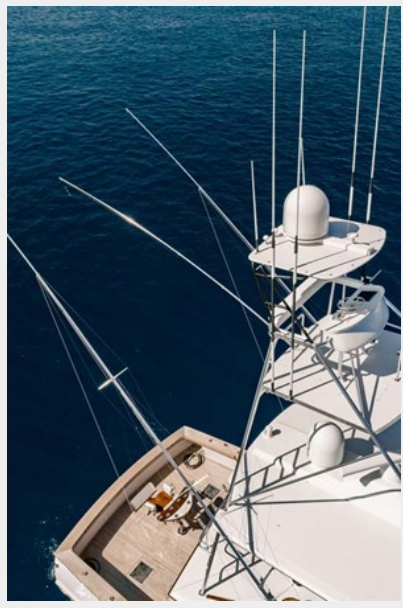


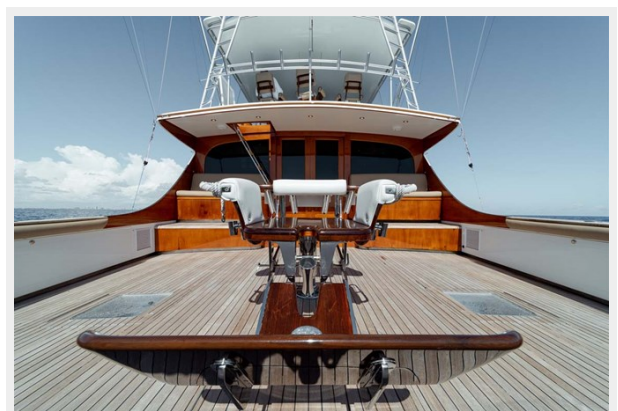
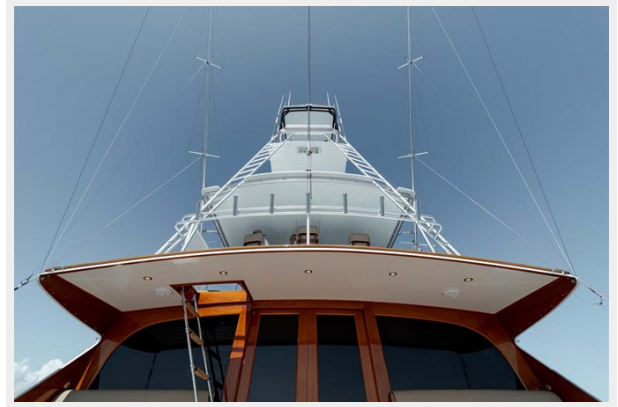


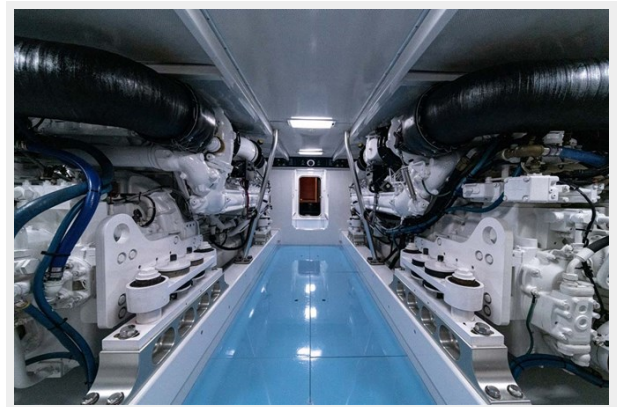
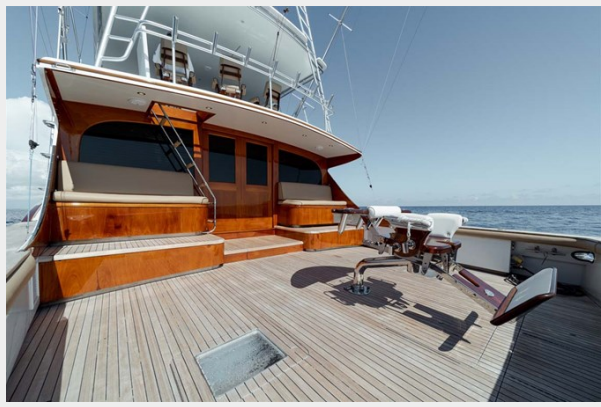












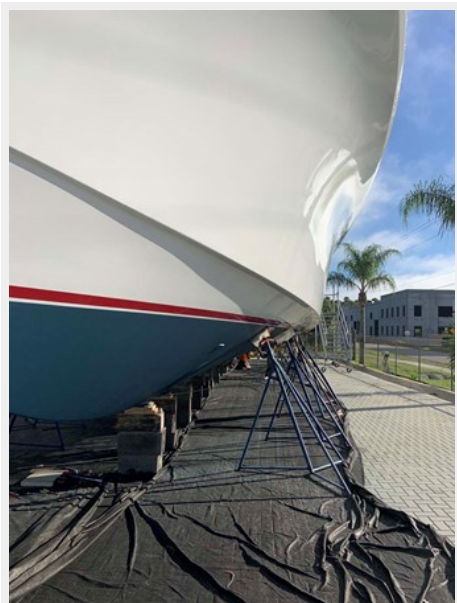




Bottom Job and Hull Sides Waxed 11-2021



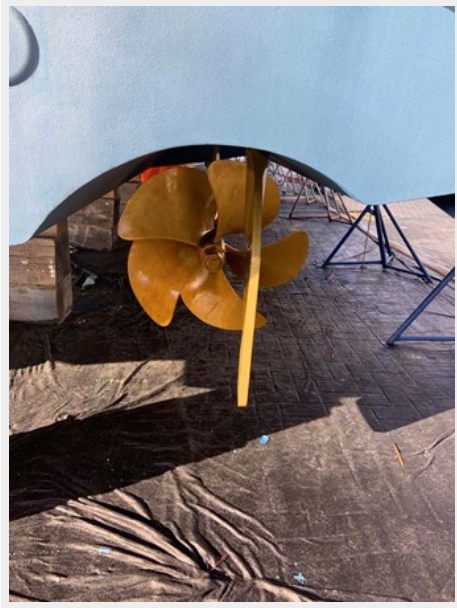
Bottom Job and Hull Sides Waxed 11-2021



Bottom Job and Hull Sides Waxed 11-2021



Bottom Job and Hull Sides Waxed 11-2021



Stern View on the Hard



CONTACTS

Andrey Shestakov, leading yacht broker of the sales department of Shestakov Yacht Sales Inc. Shestakov Yacht Sales Inc., the official representative of the Miami/Fort Lauderdale FL headquarters.

Contact details

Email: andrey@shestakovyachtsales.com

Web: shestakovyachtsales.com/en/

Telephones

USA: +1(954)274-4435

Office hours

Monday – Saturday: **9:00 - 21:00** EDT

Sunday: **closed**

Address



Harbour Towne Marina, 850 NE 3rd St,
STE 213, Dania, FL 33004