

OKKO — MONDOMARINE



Builder: MONDOMARINE

Year Built: 2012

Model: Motor Yacht

Price: PRICE ON APPLICATION

Location: Italy

LOA: 134' 11" (41.1mm)

Beam: 26.57

Max Draft: 7' 7" (2.3mm)

Cruise Speed: 12 Knots Kts. (14 MPH)

Max Speed: 16 Knots Kts. (18 MPH)

Our experienced yacht broker, Andrey Shestakov, will help you choose and buy a yacht that best suits your needs **OKKO — MONDOMARINE** from our catalogue. Presently, at Shestakov Yacht Sales Inc., we have a wide variety of yachts available on our sale's list. We also work in close contact with all the big yacht manufacturers from all over the world.

If you would like to buy a yacht **OKKO — MONDOMARINE** or would like help answering any questions concerning purchasing, selling or chartering a yacht, please call **+1(954)274-4435**

TABLE OF CONTENTS

TABLE OF CONTENTS	2
SPECIFICATIONS	4
Overview	4
Basic Information	4
Dimensions	4
Speed, Capacities and Weight	4
Accommodations	4
Hull and Deck Information	4
Engine Information	5
PHOTOS	6
2 OKKO - Running toys © Imperial (photo Breed Media) JC-17038	6
3 OKKO - Running toys 2 © Imperial (photo Breed Media) JC-16855	6
4 OKKO - Running bow © Imperial (photo Breed Media) JC-0084	6
5 OKKO - Rear view © Imperial (photo Breed Media) JC-17005	6
5.1 OKKO - Aft view © Imperial (photo Breed Media) JC-16998	6
6 OKKO - SD Jacuzzi © Imperial (photo Breed Media) JC-0109	7
5.2 OKKO - Decks © Imperial (photo Breed Media) JC-0069	7
6.1 OKKO - MD salon © Imperial (photo Jeff Brown)JC-25647	7
6.2 OKKO - BD aft © Imperial (photo Breed Media) JC-25894	7
6.4 OKKO - BD aft dining © Imperial (photo Breed Media) JC-26955	7
6.3 OKKO - BD aft lounge © Imperial (photo Breed Media) JC-25923	7
6.5 OKKO - SD bar © Imperial (photo Breed Media) JC-27019	8
6.6 OKKO - SD aft dining © Imperial (photo Breed Media) JC-26148	8
6.7 OKKO - Jacuzzi © Imperial (photo Breed Media) JC-26623	8
6.8 OKKO - Sidewalks © Imperial (photo Breed Media) JC-25636	8
8 OKKO - Still twilight © Imperial (photo Breed Media) JC-27101	8
7 OKKO - Toys © Imperial (photo Breed Media) JC-0171	8
10.1 OKKO - MD salon © Imperial (photo Breed Media) JC-27249_AP_corrected	9

12 OKKO - MD dining © Imperial (photo Breed Media) JC-25847	9
13 OKKO - Master © Imperial (photo Breed Media) JC-25934	9
14 OKKO - Master bathroom © Imperial (photo Breed Media) JC-25570	9
15 OKKO - Port VIP cabin © Imperial (photo Breed Media) JC-25486	9
16 OKKO - Stbd VIP cabin © Imperial (photo Breed Media) JC-25449	10
17 OKKO - Stbd Twin cabin © Imperial (photo Breed Media) JC-25461	10
18 OKKO - Port Twin cabin © Imperial (photo Breed Media) JC-2547	10
19 OKKO - BD salon © Imperial (photo Breed Media) JC-27230	10
20 OKKO - BD salon 2 © Imperial (photo Breed Media) JC-27026	10
21 OKKO - Bridge © Imperial (photo Breed Media) JC-27235	10
23 OKKO - Crew accomod. © Imperial (photo Breed Media) JC-25424	11
22 OKKO - Captain cabin © Imperial (photo Breed Media) JC-25497	11
24 OKKO - Crew mess © Imperial (photo Breed Media) JC-25403	11
25 OKKO - Galley © Imperial (photo Jeff Brown) JC-25400	11
26 OKKO - Engine room © Imperial (photo Breed Media) JC-25429	12
27 OKKO - Propellers © Imperial - S0Y3561	12
CONTACTS	13
Contact details	13
Telephones	13
Office hours	13
Address	13

SPECIFICATIONS

Overview

N/A

Basic Information

Category: Motor Yacht

Model Year: 2012

Year Built: 2012

Country: Italy

Dimensions

LOA: 134' 11" (41.1mm)

Beam: 26.57

Max Draft: 7' 7" (2.3mm)

Speed, Capacities and Weight

Cruise Speed: 12 Knots Kts. (14 MPH)

Cruise Speed Range: 3000

Max Speed: 16 Knots Kts. (18 MPH)

Gross Tonnage: 366 Pounds

Water Capacity: 8350 Gallons

Fuel Capacity: 13155.77 Gal Gallons

Accommodations

Total Cabins: 5

Hull and Deck Information

Hull Material: Aluminum

Hull Configuration: Semi-Displacement

Exterior Designer: Giorgio Vafiadis

Interior Designer: Giorgio Vafiadis

Engine Information

Engines: 2

Manufacturer: MTU

Engine Type: Inboard

Fuel Type: Diesel

PHOTOS

2 OKKO - Running toys © Imperial (photo Breed Media) JC-17038



3 OKKO - Running toys 2 © Imperial (photo Breed Media) JC-16855



4 OKKO - Running bow © Imperial (photo Breed Media) JC-0084



5 OKKO - Rear view © Imperial (photo Breed Media) JC-17005



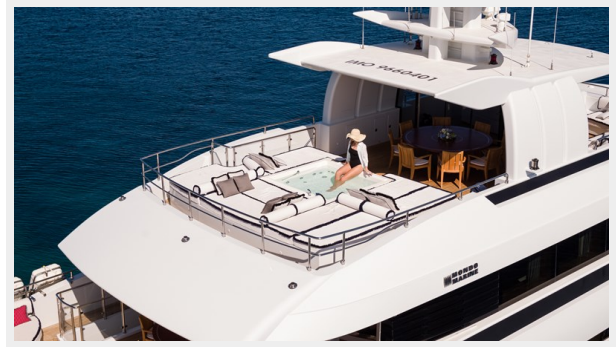
5.1 OKKO - Aft view © Imperial (photo Breed Media) JC-16998



5.2 OKKO - Decks © Imperial (photo Breed Media) JC-0069



6 OKKO - SD Jacuzzi © Imperial (photo Breed Media) JC-0109



6.1 OKKO - MD salon © Imperial (photo Jeff Brown)JC-25647



6.2 OKKO - BD aft © Imperial (photo Breed Media) JC-25894



6.3 OKKO - BD aft lounge © Imperial (photo Breed Media) JC-25923



6.4 OKKO - BD aft dining © Imperial (photo Breed Media) JC-26955



6.5 OKKO - SD bar © Imperial (photo Breed Media) JC-27019



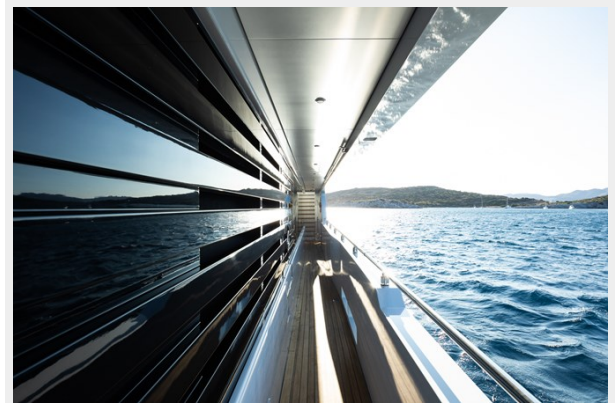
6.6 OKKO - SD aft dining © Imperial (photo Breed Media) JC-26148



6.7 OKKO - Jacuzzi © Imperial (photo Breed Media) JC-26623



6.8 OKKO - Sidewalks © Imperial (photo Breed Media) JC-25636



7 OKKO - Toys © Imperial (photo Breed Media) JC-0171



8 OKKO - Still twilight © Imperial (photo Breed Media) JC-27101



10.1 OKKO - MD salon © Imperial (photo Breed Media) JC-27249_AP_corrected



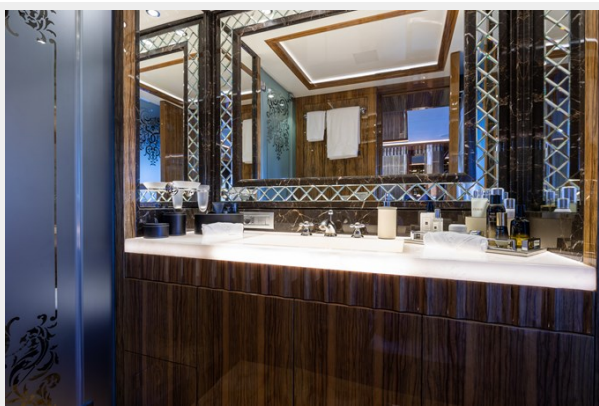
12 OKKO - MD dining © Imperial (photo Breed Media) JC-25847



13 OKKO - Master © Imperial (photo Breed Media) JC-25934



14 OKKO - Master bathroom © Imperial (photo Breed Media) JC-25570



15 OKKO - Port VIP cabin © Imperial (photo Breed Media) JC-25486



16 OKKO - Stbd VIP cabin © Imperial (photo Breed Media) JC-25449



17 OKKO - Stbd Twin cabin © Imperial (photo Breed Media) JC-25461



18 OKKO - Port Twin cabin © Imperial (photo Breed Media) JC-2547



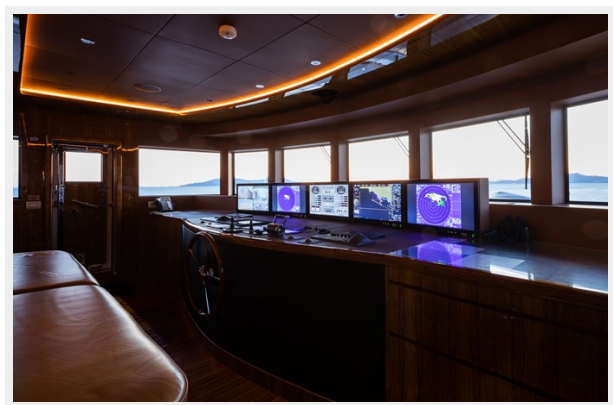
19 OKKO - BD salon © Imperial (photo Breed Media) JC-27230



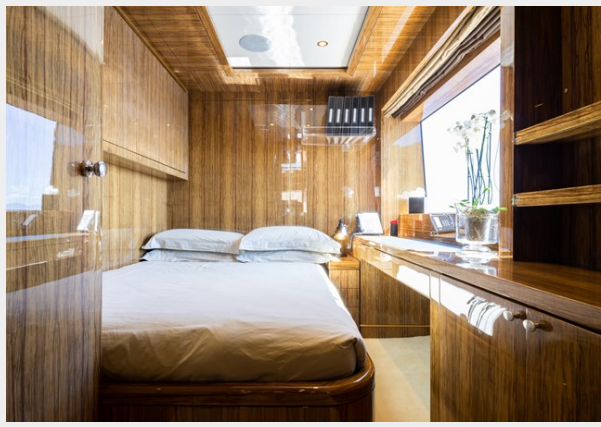
20 OKKO - BD salon 2 © Imperial (photo Breed Media) JC-27026



21 OKKO - Bridge © Imperial (photo Breed Media) JC-27235



22 OKKO - Captain cabin © Imperial (photo Breed Media) JC-25497



23 OKKO - Crew accomod. © Imperial (photo Breed Media) JC-25424



24 OKKO - Crew mess © Imperial (photo Breed Media) JC-25403



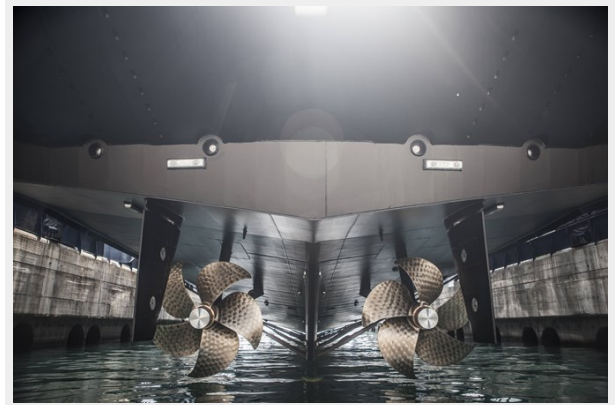
25 OKKO - Galley © Imperial (photo Jeff Brown) JC-25400



26 OKKO - Engine room © Imperial (photo Breed Media) JC-25429



27 OKKO - Propellers © Imperial - S0Y3561



CONTACTS

Andrey Shestakov, leading yacht broker of the sales department of Shestakov Yacht Sales Inc. Shestakov Yacht Sales Inc., the official representative of the Miami/Fort Lauderdale FL headquarters.

Contact details

Email: andrey@shestakovyachtsales.com

Web: shestakovyachtsales.com/en/

Telephones

USA: +1(954)274-4435

Office hours

Monday – Saturday: **9:00 - 21:00** EDT

Sunday: **closed**

Address



Harbour Towne Marina, 850 NE 3rd St,
STE 213, Dania, FL 33004