

## FRIVOLOUS TOO — O'DAY



**Builder:** O'DAY

**Year Built:** 1989

**Model:** Cruising/Racing Sailboat

**Price:** PRICE ON APPLICATION

**Location:** United States

**LOA:** 39' 7" (12.06mm)

**Beam:** 12.58

**Max Draft:** 4' 11" (1.5mm)

Our experienced yacht broker, Andrey Shestakov, will help you choose and buy a yacht that best suits your needs **Frivolous Too — O'DAY** from our catalogue. Presently, at Shestakov Yacht Sales Inc., we have a wide variety of yachts available on our sale's list. We also work in close contact with all the big yacht manufacturers from all over the world.

If you would like to buy a yacht **Frivolous Too — O'DAY** or would like help answering any questions concerning purchasing, selling or chartering a yacht, please call **+1(954)274-4435**

# TABLE OF CONTENTS

---

TABLE OF CONTENTS	2
SPECIFICATIONS	4
Overview	4
Basic Information	4
Dimensions	4
Speed, Capacities and Weight	4
Accommodations	4
Hull and Deck Information	5
Engine Information	5
PHOTOS	6
H2a	6
IMG_5726	6
D1	6
H3	6
D2	7
Dodger-old	7
FT2	7
FT3	7
helm-old	7
H4	7
In1	8
In2	8
In3	8
In4	8
In5	9
In6	9
In7	9
In8	9

---

In9	10
In10	10
LookingForward-old	10
V-berth	10
eng1	10
CONTACTS	11
Contact details	11
Telephones	11
Office hours	11
Address	11

---

# SPECIFICATIONS

---

## Overview

---

The O'Day 40 offers exceptional value for coastal cruising. The combination of good sailing performance, a roomy interior, two-stateroom layout, sugar-scoop transom, and shoal draft make the 40 a good choice for an affordable East Coast and Bahamas cruiser.

With a little elbow grease this vessel will be an excellent family cruiser, liveaboard or charter boat. Inflatable dinghy and Honda outboard are included.

Health forces sale and offers are encouraged.

## Basic Information

---

**Category:** Cruising/Racing Sailboat

**Sub Category:** Cruising Sailboat

**Model Year:** 1989

**Year Built:** 1989

**Country:** United States

## Dimensions

---

**LOA:** 39' 7" (12.06mm)

**LWL:** 33' 6" (10.21mm)

**Beam:** 12.58

**Max Draft:** 4' 11" (1.5mm)

## Speed, Capacities and Weight

---

**Water Capacity:** 50 Gallons

**Holding Tank:** 12 Gal Gallons

**Fuel Capacity:** 40 Gal Gallons

## Accommodations

---

**Total Cabins:** 2

---

## Hull and Deck Information

---

**Hull Material:** Fiberglass

**Deck Material:** Fiberglass Sandwich

**Hull Configuration:** Fin & Spade

**Hull Color:** white

---

## Engine Information

---

**Engines:** 1

**Manufacturer:** Westerbeke

**Engine Type:** Inboard

**Fuel Type:** Diesel

# PHOTOS

H2a



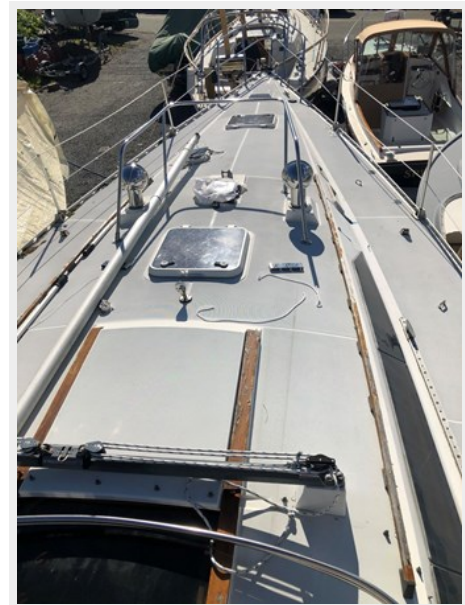
IMG\_5726



H3



D1



**D2**



**Dodger-old**



**FT2**



**FT3**



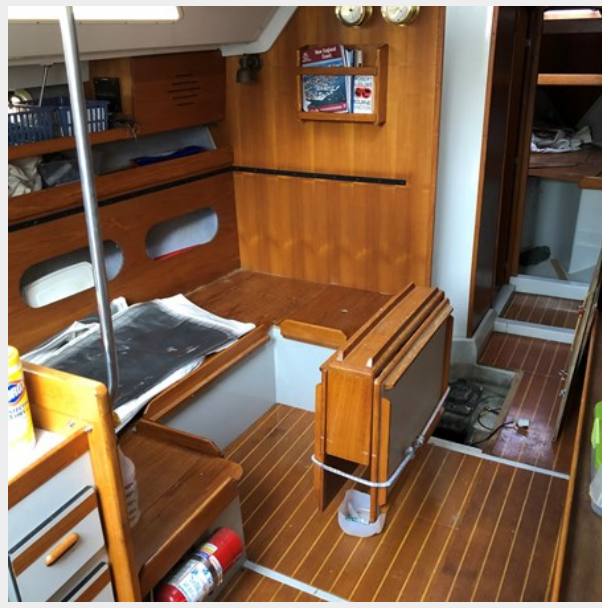
**H4**



**helm-old**



In1



In2



In3



In4





In5



In6



In7



In8



In9



In10



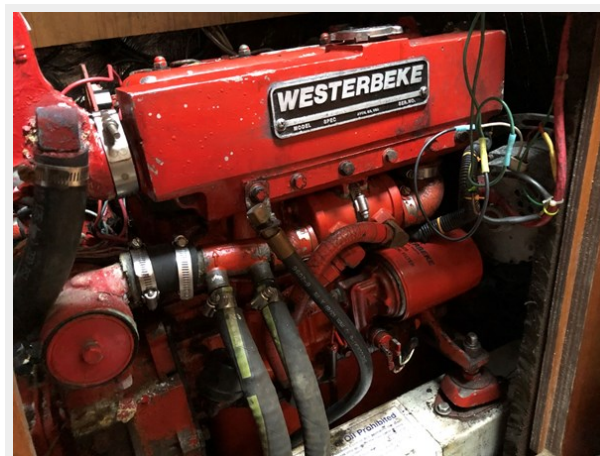
LookingForward-old



V-berth



eng1



---

# CONTACTS

---

Andrey Shestakov, leading yacht broker of the sales department of Shestakov Yacht Sales Inc. Shestakov Yacht Sales Inc., the official representative of the Miami/Fort Lauderdale FL headquarters.

---

## Contact details

---

Email: **andrey@shestakovyachtsales.com**

Web: [shestakovyachtsales.com/en/](http://shestakovyachtsales.com/en/)

---

## Telephones

---

USA: +1(954)274-4435

---

## Office hours

---

Monday – Saturday: **9:00 - 21:00** EDT

Sunday: **closed**

---

## Address

---



Harbour Towne Marina, 850 NE 3rd St,  
STE 213, Dania, FL 33004