

## PASSEPORT III — BENETEAU



**Builder:** BENETEAU

**Year Built:** 2004

**Model:** Sloop

**Price:** PRICE ON APPLICATION

**LOA:** 42' (12.8mm)

**Beam:** 12.91

**Max Draft:** 4' 9" (1.45mm)

Our experienced yacht broker, Andrey Shestakov, will help you choose and buy a yacht that best suits your needs **Passeport III — BENETEAU** from our catalogue. Presently, at Shestakov Yacht Sales Inc., we have a wide variety of yachts available on our sale's list. We also work in close contact with all the big yacht manufacturers from all over the world.

If you would like to buy a yacht **Passeport III — BENETEAU** or would like help answering any questions concerning purchasing, selling or chartering a yacht, please call **+1(954)274-4435**

# TABLE OF CONTENTS

TABLE OF CONTENTS	2
SPECIFICATIONS	5
Overview	5
Basic Information	5
Dimensions	5
Speed, Capacities and Weight	5
Accommodations	6
Hull and Deck Information	6
Engine Information	6
PHOTOS	7
2	7
3	7
4	7
5	7
6	7
7	7
9	8
8	8
10	8
11	8
12	9
13	9
15	9
14	9
16	9
17	9
18	10
19	10

21	10
20	10
22	11
23	11
24	11
25	11
26	12
27	12
28	12
29	12
30	12
31	12
33	13
32	13
35	13
34	13
36	14
37	14
38	14
39	14
40	15
41	15
42	15
43	15
45	16
44	16
46	16
47	16
48	17

---

49	17
50	17
CONTACTS	18
Contact details	18
Telephones	18
Office hours	18
Address	18

---

# SPECIFICATIONS

---

## Overview

---

This exceptionally clean 423 is a powerful sloop that is easy to see cutting through the water. The sheerline is a little softer than Beneteau's racy First Series boats, and there is a subtle curve to the hull that speaks to the cruiser. The bow is not plumb, there is a short but appealing rake and the reverse transom allows for easy-access swim steps. The cabintop gracefully flows into the hull giving her a stately profile when viewed from the side.

**Construction**  
The robust, hand-laid solid fiberglass hull is built to CE Offshore A category standards. The hull is supported by Beneteau's proven grid system—a bonded fiberglass hull liner that stiffens the hull and spreads loads from the rig throughout the boat. The deck is a cored sandwich construction to keep weight down, although a solid laminate is used to support high-load areas. The bulkheads are bonded 360 degrees to hull and deck. Below the water the forefoot is relatively narrow and somewhat flat. The 423's lack of wetted surface translates into good performance in most conditions with a hull shape not prone to heeling. The cast-iron bulb keel is externally fastened to the hull. The shoal-draft keel at 4' 9" is ideal for coastal and Caribbean cruising. The prop is well protected in a small skeg as opposed to a more vulnerable strut. The balanced rudder is positioned well aft for good steering control, and the rudder is composite construction, including the stock.

---

## Basic Information

---

**Category:** Sloop

**Sub Category:** Cruising Sailboat

**Model Year:** 2004

**Year Built:** 2004

---

## Dimensions

---

**LOA:** 42' (12.8mm)

**LWL:** 38' 7" (11.76mm)

**Beam:** 12.91

**Max Draft:** 4' 9" (1.45mm)

---

## Speed, Capacities and Weight

---

**Water Capacity:** 154 Gallons

**Fuel Capacity:** 53 Gal Gallons

---

## Accommodations

---

**Total Cabins:** 2

**Total Berths:** 3

**Total Heads:** 2

---

## Hull and Deck Information

---

**Hull Material:** Fiberglass

---

## Engine Information

---

**Engines:** 1

**Manufacturer:** Volvo Penta

**Engine Type:** Inboard

**Fuel Type:** Diesel

# PHOTOS

2



3



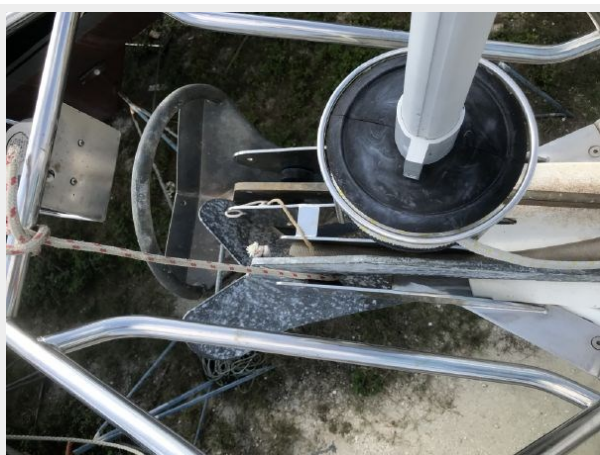
4



5



6



7



8



9



10



11

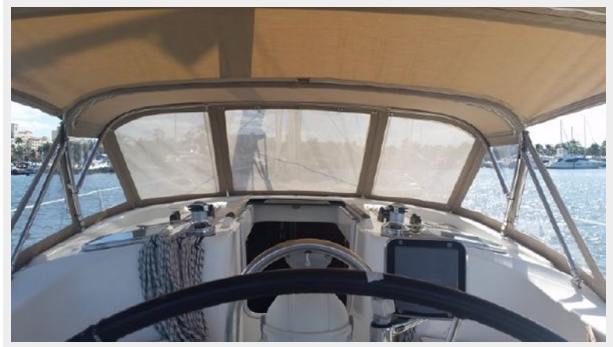




12



13



14



15



16



17



18



19



21



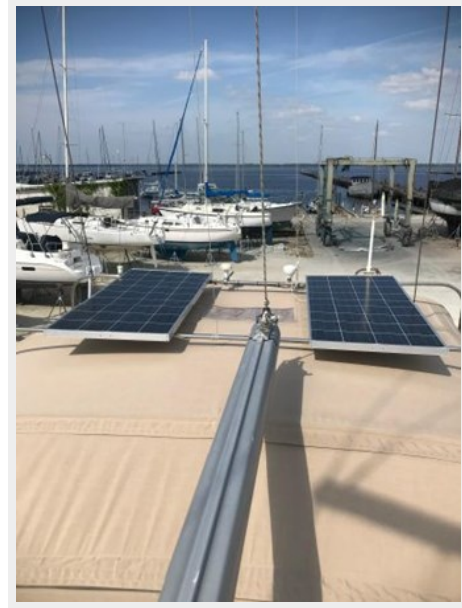
20



22



23



24



25



26



27



28



29



30



31



32



33



34



35



36



37



38



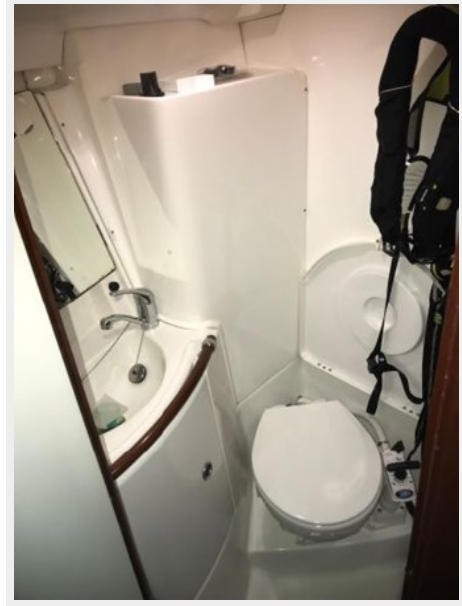
39



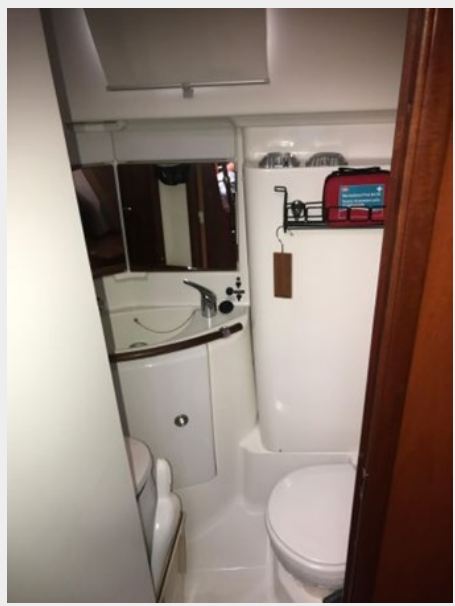
40



41



42



43



44



45



46



47





48



49



50



---

# CONTACTS

---

Andrey Shestakov, leading yacht broker of the sales department of Shestakov Yacht Sales Inc. Shestakov Yacht Sales Inc., the official representative of the Miami/Fort Lauderdale FL headquarters.

---

## Contact details

---

Email: [andrey@shestakovyachtsales.com](mailto:andrey@shestakovyachtsales.com)

Web: [shestakovyachtsales.com/en/](http://shestakovyachtsales.com/en/)

---

## Telephones

---

USA: +1(954)274-4435

---

## Office hours

---

Monday – Saturday: **9:00 - 21:00** EDT

Sunday: **closed**

---

## Address

---



Harbour Towne Marina, 850 NE 3rd St,  
STE 213, Dania, FL 33004