

## SERENITY — CATALINA



**Builder:** CATALINA

**Year Built:** 1995

**Model:** Cruising Sailboat

**Price:** PRICE ON APPLICATION

**LOA:** 42' (12.8mm)

**Beam:** 13.83

**Max Draft:** 4' 10" (1.47mm)

Our experienced yacht broker, Andrey Shestakov, will help you choose and buy a yacht that best suits your needs **Serenity — CATALINA** from our catalogue. Presently, at Shestakov Yacht Sales Inc., we have a wide variety of yachts available on our sale's list. We also work in close contact with all the big yacht manufacturers from all over the world.

If you would like to buy a yacht **Serenity — CATALINA** or would like help answering any questions concerning purchasing, selling or chartering a yacht, please call **+1(954)274-4435**

# TABLE OF CONTENTS

TABLE OF CONTENTS	2
SPECIFICATIONS	5
Overview	5
Basic Information	5
Dimensions	5
Speed, Capacities and Weight	5
Accommodations	5
Hull and Deck Information	6
Engine Information	6
PHOTOS	7
2	7
3	7
4	7
5	7
6	8
7	8
9	8
8	8
10	9
11	9
13	9
12	9
14	10
15	10
16	10
17	10
18	10
19	10

---

20	11
21	11
22	11
23	11
24	12
25	12
26	12
27	12
28	13
29	13
30	13
31	13
32	14
33	14
34	14
35	14
36	15
37	15
38	15
39	15
40	16
41	16
42	16
43	16
44	17
45	17
46	17
47	17
CONTACTS	18

---

---

Contact details	18
Telephones	18
Office hours	18
Address	18

---

# SPECIFICATIONS

---

## Overview

---

15,000 price drop April.....owner says sell now.

The Catalina 42 is the mainstay of the Catalina larger boat line. Almost 500 of the original 42's were produced before Gerry Douglas revamped the design and came out with the 42 MK II. Over 300 of the MK II versions have been produced and it is still in production today. This adds value to brokerage and newly built 42's alike. With the MK II upgrades come vinylester resin, limiting osmotic blistering, the transom rounded off at the deck level and storage was added to the cockpit seating. If you are looking for a cruiser/racer/daysailor that can withstand the sands of time then the Catalina 42 MK II is a good place to settle.

## Basic Information

---

**Category:** Cruising Sailboat

**Model Year:** 1995

**Year Built:** 1995

## Dimensions

---

**LOA:** 42' (12.8mm)

**LWL:** 36' (10.97mm)

**Beam:** 13.83

**Max Draft:** 4' 10" (1.47mm)

## Speed, Capacities and Weight

---

**Water Capacity:** 138 Gallons

**Fuel Capacity:** 38 Gal Gallons

## Accommodations

---

**Total Cabins:** 2

**Total Berths:** 2

**Total Heads:** 2

---

## Hull and Deck Information

---

**Hull Material:** Fiberglass

## Engine Information

---

**Engines:** 1

**Manufacturer:** Yanmar

**Engine Type:** Inboard

**Fuel Type:** Diesel

# PHOTOS

2



3



4



5



6



7



9



8





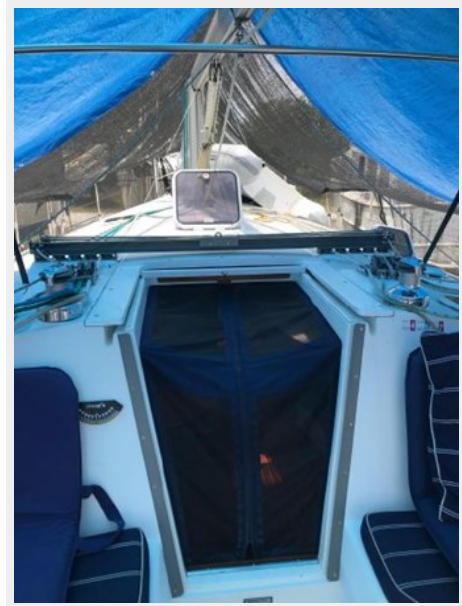
10



11



13



12



14



15



16



17



18



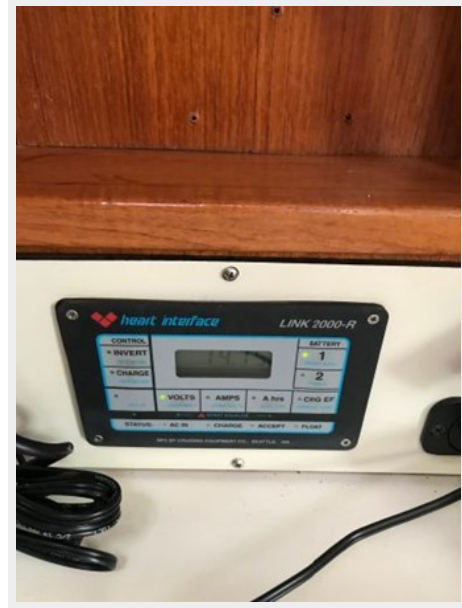
19



20



21



22



23



24



25



26



27



28



29



30



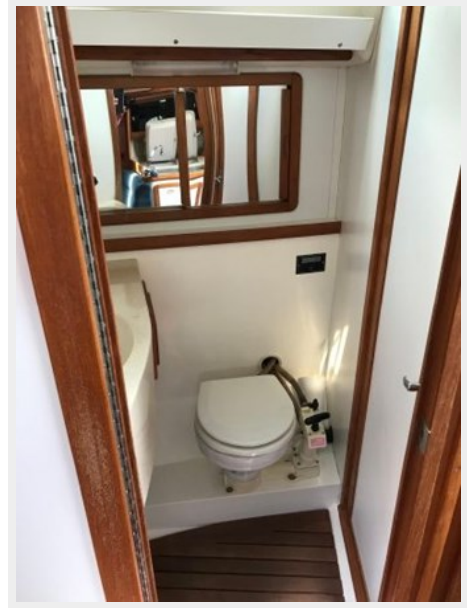
31



32



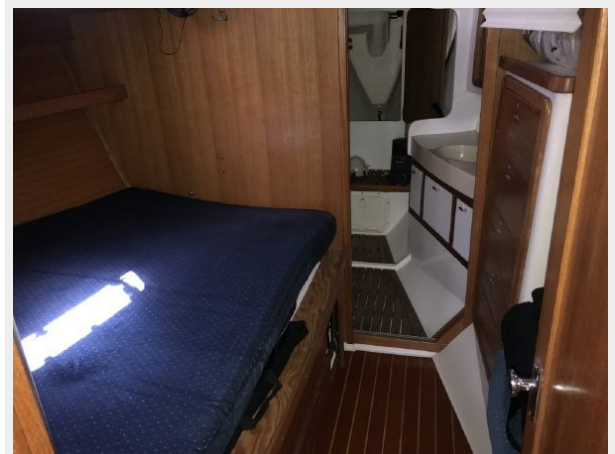
33



34



35



36



37



38



39



40



41



42



43

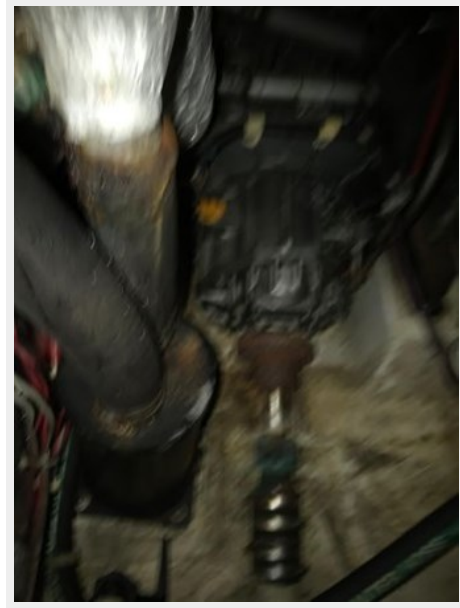




44



45



46



47



# CONTACTS

---

Andrey Shestakov, leading yacht broker of the sales department of Shestakov Yacht Sales Inc. Shestakov Yacht Sales Inc., the official representative of the Miami/Fort Lauderdale FL headquarters.

## Contact details

---

Email: [andrey@shestakovyachtsales.com](mailto:andrey@shestakovyachtsales.com)

Web: [shestakovyachtsales.com/en/](http://shestakovyachtsales.com/en/)

## Telephones

---

USA: +1(954)274-4435

## Office hours

---

Monday – Saturday: **9:00 - 21:00** EDT

Sunday: **closed**

## Address

---



Harbour Towne Marina, 850 NE 3rd St,  
STE 213, Dania, FL 33004