

LAST TANGO — ROBINHOOD



Builder: ROBINHOOD

Year Built: 1998

Model: Cruising Sailboat

Price: PRICE ON APPLICATION

LOA: 36' (10.97mm)

Beam: 10.58

Max Draft: 5' (1.52mm)

Our experienced yacht broker, Andrey Shestakov, will help you choose and buy a yacht that best suits your needs **Last Tango — ROBINHOOD** from our catalogue. Presently, at Shestakov Yacht Sales Inc., we have a wide variety of yachts available on our sale's list. We also work in close contact with all the big yacht manufacturers from all over the world.

If you would like to buy a yacht **Last Tango — ROBINHOOD** or would like help answering any questions concerning purchasing, selling or chartering a yacht, please call **+1(954)274-4435**

TABLE OF CONTENTS

TABLE OF CONTENTS	2
SPECIFICATIONS	5
Overview	5
Basic Information	5
Dimensions	5
Speed, Capacities and Weight	5
Hull and Deck Information	5
Engine Information	6
PHOTOS	7
2	7
3	7
4	7
5	7
6	8
7	8
8	8
9	8
10	9
11	9
12	9
13	9
14	10
15	10
17	10
16	10
18	11
19	11
20	11

21	11
22	12
23	12
24	12
25	12
26	13
27	13
29	13
28	13
31	14
30	14
33	14
32	14
35	15
34	15
36	15
37	15
39	16
38	16
40	16
41	16
42	17
43	17
44	17
45	17
46	18
47	18
48	18
49	18

50	19
51	19
52	19
53	19
54	19
55	19
57	20
56	20
58	20
59	20
CONTACTS	21
Contact details	21
Telephones	21
Office hours	21
Address	21

SPECIFICATIONS

Overview

When Cape Dory ceased operations in 1991 the hull molds were scattered and the 36 mold settled at Spartan Marine in Robinhood Maine where the 36 is still being built on a semi custom basis. The materials and processes used now are even better than in years past producing a very desired yachtsmans yacht. The Robinhood 36 looks at ease in the water. The 36 has a subtle sheerline, and the low freeboard accentuates a low-slung profile. Alberg was a master of creating boats of moderate proportions that gave the impression of being heavier and more conservative than they really were. The full keel is cutaway forward with an attached rudder and the prop is enclosed in an aperture. Most CD 36s were rigged as cutters with a club boom, a few came from the factory as sloops.

Basic Information

Category: Cruising Sailboat

Model Year: 1998

Year Built: 1998

Dimensions

LOA: 36' (10.97mm)

LWL: 27' 10" (8.48mm)

Beam: 10.58

Max Draft: 5' (1.52mm)

Speed, Capacities and Weight

Water Capacity: 96 Gallons

Fuel Capacity: 43 Gal Gallons

Hull and Deck Information

Hull Material: Fiberglass

Engine Information

Engines: 1

Manufacturer: Yanmar

Engine Type: Inboard

Fuel Type: Diesel

PHOTOS

2



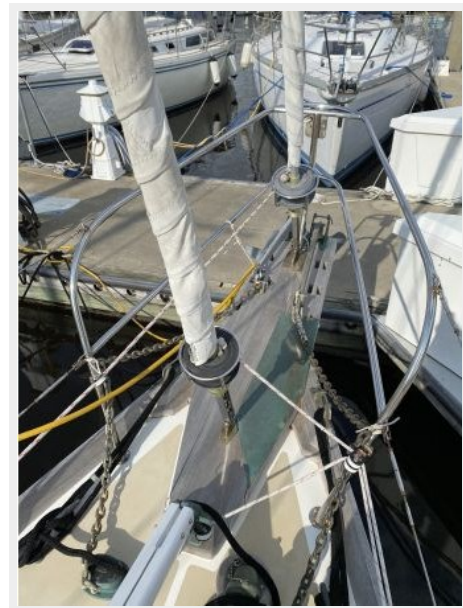
3



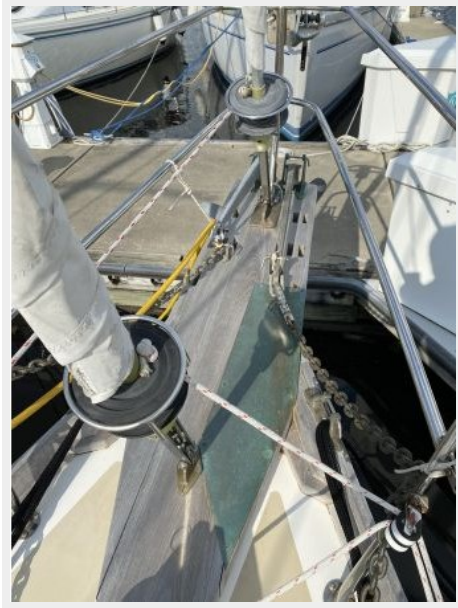
4



5



6



7



8



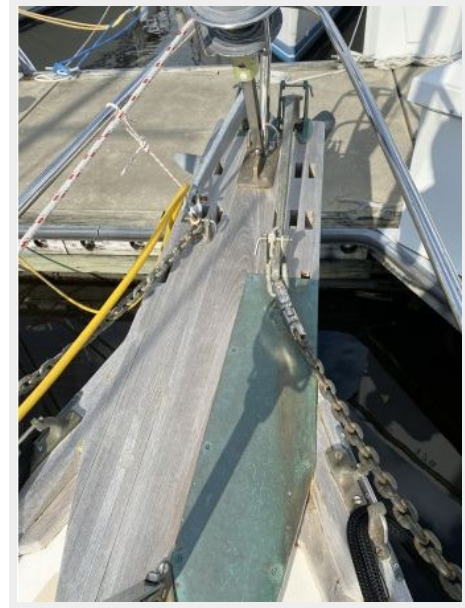
9



10



11



12



13



14



15



16



17



18



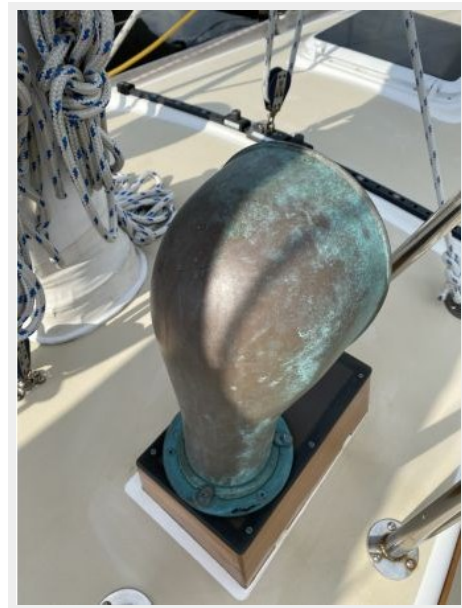
19



20



21



22



23



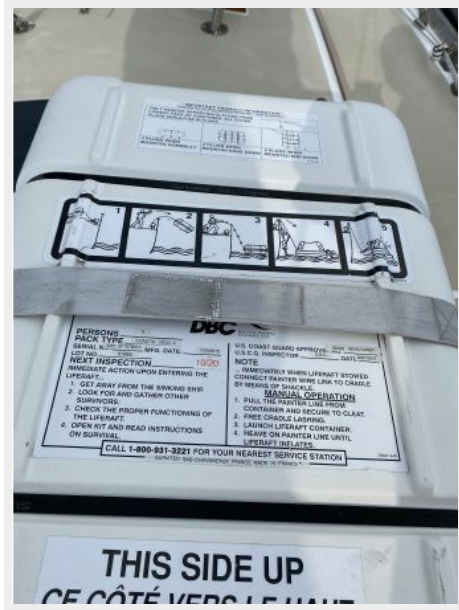
24



25



26



27



29



28



30



31



32



33



34



35



36



37



38



39



40



41



42



43



44



45



46



47



48



49



50



51



52



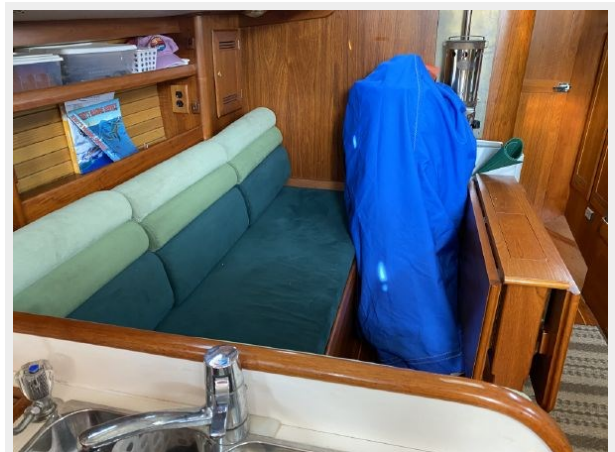
53



54



55



56



57



58



59



CONTACTS

Andrey Shestakov, leading yacht broker of the sales department of Shestakov Yacht Sales Inc. Shestakov Yacht Sales Inc., the official representative of the Miami/Fort Lauderdale FL headquarters.

Contact details

Email: andrey@shestakovyachtsales.com

Web: shestakovyachtsales.com/en/

Telephones

USA: +1(954)274-4435

Office hours

Monday – Saturday: **9:00 - 21:00** EDT

Sunday: **closed**

Address



Harbour Towne Marina, 850 NE 3rd St,
STE 213, Dania, FL 33004