

BLACK PEARL — HUNTER



Builder: HUNTER

Year Built: 1987

Model: Cruising Sailboat

Price: PRICE ON APPLICATION

LOA: 35' (10.67mm)

Beam: 11.75

Max Draft: 4' 6" (1.37mm)

Our experienced yacht broker, Andrey Shestakov, will help you choose and buy a yacht that best suits your needs **Black Pearl — HUNTER** from our catalogue. Presently, at Shestakov Yacht Sales Inc., we have a wide variety of yachts available on our sale's list. We also work in close contact with all the big yacht manufacturers from all over the world.

If you would like to buy a yacht **Black Pearl — HUNTER** or would like help answering any questions concerning purchasing, selling or chartering a yacht, please call **+1(954)274-4435**

TABLE OF CONTENTS

TABLE OF CONTENTS	2
SPECIFICATIONS	5
Overview	5
Basic Information	5
Dimensions	5
Speed, Capacities and Weight	5
Accommodations	5
Hull and Deck Information	6
Engine Information	6
PHOTOS	7
2	7
3	7
4	7
5	7
6	8
7	8
9	8
8	8
10	9
11	9
12	9
13	9
14	9
15	9
16	10
17	10
19	10
18	10

20	11
21	11
22	11
23	11
25	12
24	12
26	12
27	12
29	13
28	13
30	13
31	13
32	14
33	14
34	14
35	14
36	14
37	14
38	15
39	15
40	15
41	15
42	15
43	15
44	16
45	16
46	16
47	16
48	16

49	16
50	17
51	17
52	17
53	17
54	18
55	18
56	18
57	18
59	19
58	19
60	19
61	19
62	20
63	20
64	20
65	20
66	21
67	21
68	21
69	21
70	22
CONTACTS	23
Contact details	23
Telephones	23
Office hours	23
Address	23

SPECIFICATIONS

Overview

The Hunter 35 is a great club racer or family cruiser. Her comfortable interior space and layout combined with her good sailing characteristics make her a fun boat to spend time on. Sailing is simple with all lines led to the large cockpit. The decks are wide and open. The main is a traditional on boom fully battened sail. The head sail is a roller furling system. Black Pearl has a new mainsail cover and a nice cockpit bimini. She has all of the safety gear and is ready to go.

Basic Information

Category: Cruising Sailboat

Model Year: 1987

Year Built: 1987

Dimensions

LOA: 35' (10.67mm)

LWL: 29' 9" (9.07mm)

Beam: 11.75

Max Draft: 4' 6" (1.37mm)

Speed, Capacities and Weight

Water Capacity: 64 Gallons

Holding Tank: 15 Gal Gallons

Fuel Capacity: 22 Gal Gallons

Accommodations

Total Cabins: 2

Total Berths: 2

Total Heads: 1

Hull and Deck Information

Hull Material: Fiberglass

Engine Information

Engines: 1

Manufacturer: Yanmar

Engine Type: Inboard

Fuel Type: Diesel

PHOTOS

2



3



4



5



6



7



9



8



10



11



12



13



14



15



16



17



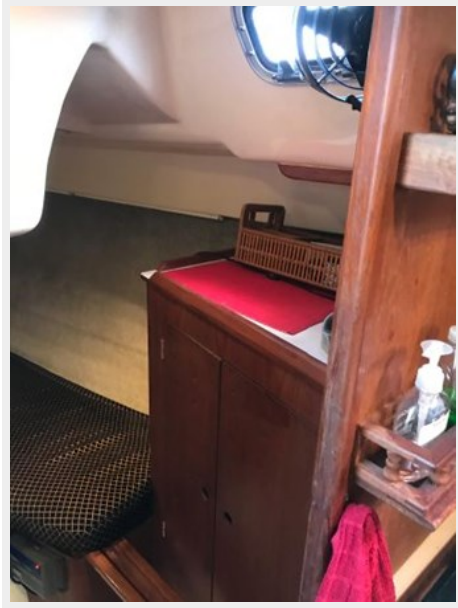
18



19



20



21



22



23



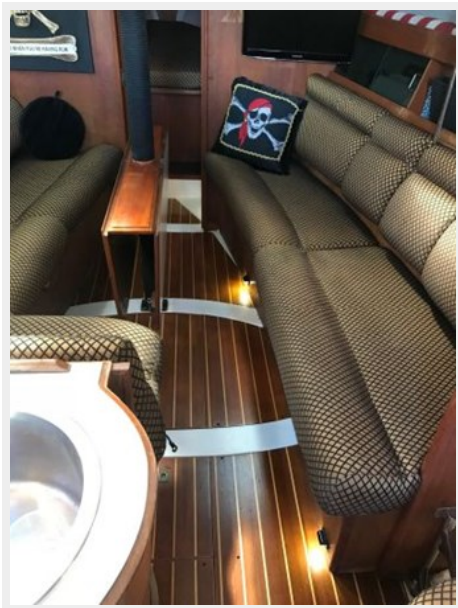
24



25



26



27



28



29



30



31



32



33



34



35



36



37



38



39



40



41



42



43



44



45



46



47



48



49



50



51



52



53



54



55



56



57



58



59



60



61



62



63



64



65



66



67



68



69



70



CONTACTS

Andrey Shestakov, leading yacht broker of the sales department of Shestakov Yacht Sales Inc. Shestakov Yacht Sales Inc., the official representative of the Miami/Fort Lauderdale FL headquarters.

Contact details

Email: andrey@shestakovyachtsales.com

Web: shestakovyachtsales.com/en/

Telephones

USA: +1(954)274-4435

Office hours

Monday – Saturday: **9:00 - 21:00** EDT

Sunday: **closed**

Address



Harbour Towne Marina, 850 NE 3rd St,
STE 213, Dania, FL 33004