

## ZEELAND — BENETEAU



**Builder:** BENETEAU

**Year Built:** 2008

**Model:** Cruising Sailboat

**Price:** PRICE ON APPLICATION

**LOA:** 35' 6" (10.82mm)

**Beam:** 11.41

**Max Draft:** 4' 9" (1.45mm)

Our experienced yacht broker, Andrey Shestakov, will help you choose and buy a yacht that best suits your needs **Zeeland — BENETEAU** from our catalogue. Presently, at Shestakov Yacht Sales Inc., we have a wide variety of yachts available on our sale's list. We also work in close contact with all the big yacht manufacturers from all over the world.

If you would like to buy a yacht **Zeeland — BENETEAU** or would like help answering any questions concerning purchasing, selling or chartering a yacht, please call **+1(954)274-4435**

# TABLE OF CONTENTS

TABLE OF CONTENTS	2
SPECIFICATIONS	4
Overview	4
Basic Information	4
Dimensions	4
Speed, Capacities and Weight	4
Accommodations	4
Hull and Deck Information	5
Engine Information	5
PHOTOS	6
2	6
3	6
4	6
5	6
6	6
7	6
8	7
9	7
10	7
11	7
12	7
13	7
15	8
14	8
16	8
17	8
18	8
19	8

---

21	9
20	9
22	9
23	9
24	9
25	9
27	10
26	10
CONTACTS	11
Contact details	11
Telephones	11
Office hours	11
Address	11

---

# SPECIFICATIONS

---

## Overview

---

PRICE REDUCED NEW 2017 MAINSAIL; FRESH 2017 BOTTOM PAINT Clean one-owner example of the popular Beneteau 343. Ideally suited for fun family weekends with all the comforts of home -- two private cabins, head with shower, refrigeration, microwave, stovetop with oven, and dodger with cockpit sunshade. Plus, shoal draft, furling mainsail and headsail, electric windlass, solar, wind generator, and all of the electronics you'll need to navigate safely. Why not go easy on yourself and let ZEELAND simplify your boat search?

## Basic Information

---

**Category:** Cruising Sailboat

**Model Year:** 2008

**Year Built:** 2008

## Dimensions

---

**LOA:** 35' 6" (10.82mm)

**LWL:** 30' 10" (9.4mm)

**Beam:** 11.41

**Max Draft:** 4' 9" (1.45mm)

## Speed, Capacities and Weight

---

**Water Capacity:** 67 Gallons

**Holding Tank:** 21 Gal Gallons

**Fuel Capacity:** 20 Gal Gallons

## Accommodations

---

**Total Cabins:** 2

**Total Berths:** 4

**Total Heads:** 1

---

## Hull and Deck Information

---

**Hull Material:** Fiberglass

---

## Engine Information

---

**Engines:** 1

**Manufacturer:** Yanmar

**Engine Type:** Inboard

**Fuel Type:** Diesel

# PHOTOS

2



3



4



5



6



7





8



9



10



11



12



13





14



15



16



17



18



19





20



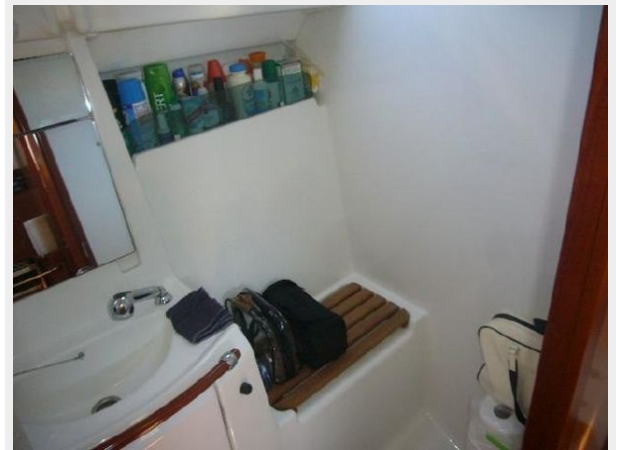
21



22



23



24



25



26



27



# CONTACTS

---

Andrey Shestakov, leading yacht broker of the sales department of Shestakov Yacht Sales Inc. Shestakov Yacht Sales Inc., the official representative of the Miami/Fort Lauderdale FL headquarters.

## Contact details

---

Email: [andrey@shestakovyachtsales.com](mailto:andrey@shestakovyachtsales.com)

Web: [shestakovyachtsales.com/en/](http://shestakovyachtsales.com/en/)

## Telephones

---

USA: +1(954)274-4435

## Office hours

---

Monday – Saturday: **9:00 - 21:00** EDT

Sunday: **closed**

## Address

---



Harbour Towne Marina, 850 NE 3rd St,  
STE 213, Dania, FL 33004