

SELAH — HUNTER



Builder: HUNTER

Year Built: 2002

Model: Cruising/Racing Sailboat

Price: PRICE ON APPLICATION

LOA: 34' (10.36m)

Beam: 11.66

Max Draft: 4' 6" (1.37m)

Our experienced yacht broker, Andrey Shestakov, will help you choose and buy a yacht that best suits your needs **Selah — HUNTER** from our catalogue. Presently, at Shestakov Yacht Sales Inc., we have a wide variety of yachts available on our sale's list. We also work in close contact with all the big yacht manufacturers from all over the world.

If you would like to buy a yacht **Selah — HUNTER** or would like help answering any questions concerning purchasing, selling or chartering a yacht, please call **+1(954)274-4435**

TABLE OF CONTENTS

TABLE OF CONTENTS	2
SPECIFICATIONS	5
Overview	5
Basic Information	5
Dimensions	5
Speed, Capacities and Weight	6
Accommodations	6
Hull and Deck Information	6
Engine Information	6
PHOTOS	7
2	7
3	7
4	7
5	7
6	8
7	8
9	8
8	8
10	9
11	9
12	9
13	9
14	10
15	10
16	10
17	10
18	11
19	11

21	11
20	11
22	12
23	12
25	12
24	12
26	13
27	13
28	13
29	13
30	14
31	14
32	14
33	14
34	15
35	15
36	15
37	15
38	16
39	16
40	16
41	16
43	17
42	17
44	17
45	17
46	18
47	18
49	18

48	18
51	19
50	19
52	19
53	19
54	20
55	20
56	20
57	20
59	21
58	21
61	21
60	21
62	22
63	22
64	22
65	22
66	23
67	23
68	23
CONTACTS	24
Contact details	24
Telephones	24
Office hours	24
Address	24

SPECIFICATIONS

Overview

Whether you are ready to set sail for the islands or just around the buoys, the Hunter 340 can really make a difference. Starting with the tall, fractional rig – which is a direct descendent of the B&R rig that powered Hunter's Child to a second place finish in the recent BOC – Hunter has engineered the mast to carry less weight aloft with smaller sections. This is accomplished by utilizing swept-back spreaders and reverse diagonals as well as mast support struts. This combination provides superior strength without a backstay and increases stability at the same time. By using a large roach main as the power sail, Hunter has eased the effort in sail handling and allowed for real versatility for all wind and sea conditions. Your benefit: better performance with less effort.

The deck layout reflects the innovation that accompanies the rig. An integrated arch protects the cockpit from snapping main sheets and blistering sun with the optional bimini. This arch keeps the cockpit clear and open. A custom console stands ready with the standard VHF and instruments. Single lever control and fold down table along with engine instrumentation complete the command station. The swim platform and walkthrough transom complete with shower and folding ladder are perfect for water sports or for boarding the tender. Storage is everywhere you look and the non-skid is first rate. Comfort is truly important aboard whether for a week or a year, so Hunter has created an interior that not only looks good, but works for you as well. Two private, large staterooms along with an enormous head with shower and a salon that can seat eight plus a gourmet galley will keep all the crew happy.

If you're looking for major comfort in a mid-size package and performance is important, then the Hunter 340 is your answer.

Basic Information

Category: Cruising/Racing Sailboat

Model Year: 2002

Year Built: 2002

Dimensions

LOA: 34' (10.36mm)

LWL: 28' 7" (8.71mm)

Beam: 11.66

Max Draft: 4' 6" (1.37mm)

Speed, Capacities and Weight

Water Capacity: 75 Gallons

Holding Tank: 30 Gal Gallons

Fuel Capacity: 30 Gal Gallons

Accommodations

Total Cabins: 2

Total Berths: 3

Total Heads: 1

Hull and Deck Information

Hull Material: Fiberglass

Engine Information

Engines: 1

Manufacturer: Yanmar

Engine Type: Inboard

Fuel Type: Diesel

PHOTOS

2



3



4



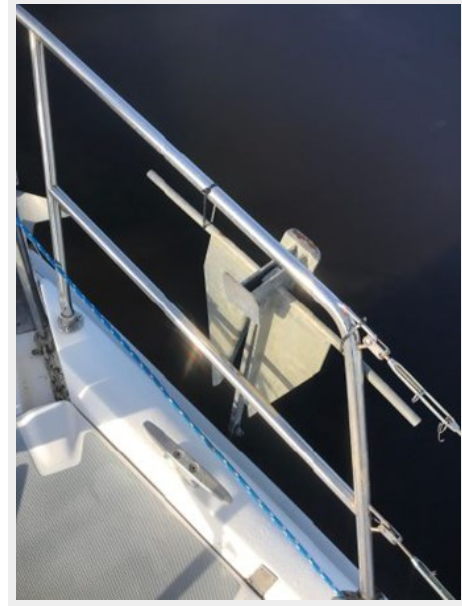
5



6



7



9



8



10



11



12



13



14



15



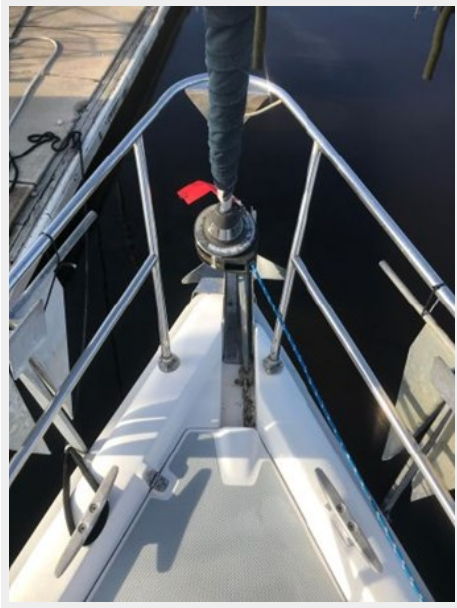
16



17



18



19



21



20



22



23



25

24



26



27



28



29



30



31



32



33



34



35



36



37



38



39



40



41



42



43



44



45



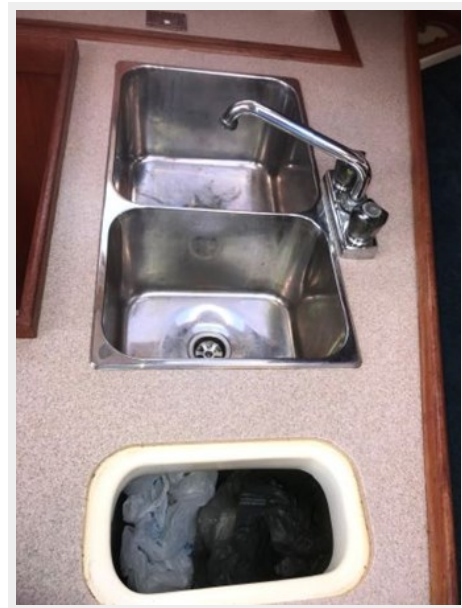
46



47



49



48



50



51



52



53



54



55



56



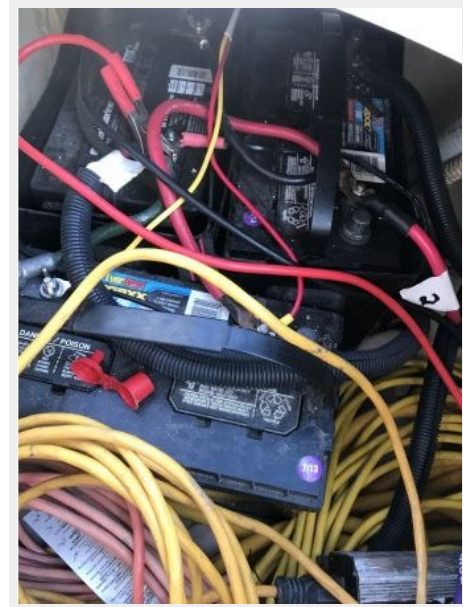
57



58



59



60



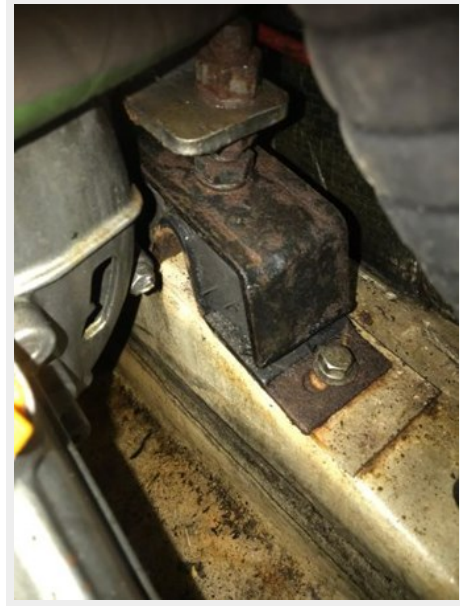
61



62



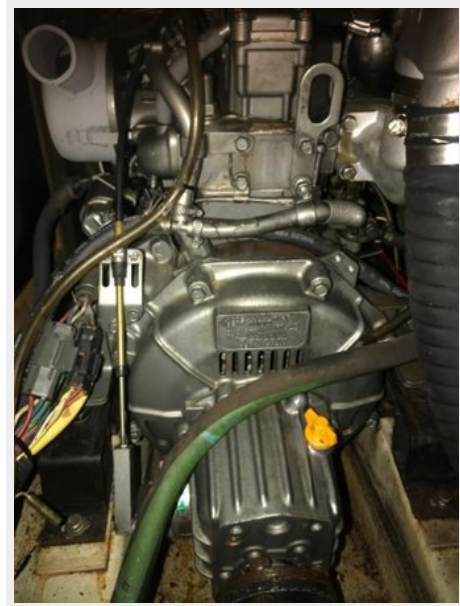
63



64



65



66



67



68



CONTACTS

Andrey Shestakov, leading yacht broker of the sales department of Shestakov Yacht Sales Inc. Shestakov Yacht Sales Inc., the official representative of the Miami/Fort Lauderdale FL headquarters.

Contact details

Email: andrey@shestakovyachtsales.com

Web: shestakovyachtsales.com/en/

Telephones

USA: +1(954)274-4435

Office hours

Monday – Saturday: **9:00 - 21:00** EDT

Sunday: **closed**

Address



Harbour Towne Marina, 850 NE 3rd St,
STE 213, Dania, FL 33004