

## ON WE GO — MAINSHIP



**Builder:** MAINSHIP

**Year Built:** 1980

**Model:** Trawler Yacht

**Price:** PRICE ON APPLICATION

**LOA:** 34' (10.36m)

**Beam:** 11.91

**Max Draft:** 2' 10" (0.86m)

**Cruise Speed:** 10 Knots Kts. (12 MPH)

Our experienced yacht broker, Andrey Shestakov, will help you choose and buy a yacht that best suits your needs **On We Go — MAINSHIP** from **our catalogue**. Presently, at **Shestakov Yacht Sales Inc.**, we have a wide variety of yachts available on **our sale's list**. We also work in close contact with all the big **yacht manufacturers** from all over the world.

If you would like to buy a yacht **On We Go — MAINSHIP** or would like help answering any questions concerning purchasing, selling or chartering a yacht, please call **+1(954)274-4435**

# TABLE OF CONTENTS

TABLE OF CONTENTS	2
SPECIFICATIONS	6
Overview	6
Basic Information	6
Dimensions	6
Speed, Capacities and Weight	6
Accommodations	6
Hull and Deck Information	7
Engine Information	7
PHOTOS	8
2	8
3	8
4	8
5	8
7	9
6	9
8	9
9	9
10	10
11	10
12	10
13	10
14	11
15	11
16	11
17	11
18	12
19	12

---

20	12
21	12
23	13
22	13
24	13
25	13
26	13
27	13
28	14
29	14
31	14
30	14
32	14
33	14
34	15
35	15
36	15
37	15
38	15
39	15
40	16
41	16
42	16
43	16
45	16
44	16
46	17
47	17
48	17

---

---

49	17
50	18
51	18
52	18
53	18
54	18
55	18
56	19
57	19
58	19
59	19
60	19
61	19
62	20
63	20
64	20
65	20
67	21
66	21
69	21
68	21
71	22
70	22
72	22
73	22
74	23
75	23
77	23
76	23

---

78	24
79	24
80	24
81	24
83	25
82	25
CONTACTS	26
Contact details	26
Telephones	26
Office hours	26
Address	26

---

# SPECIFICATIONS

---

## Overview

---

1980 Mainship Trawler 34 "OnWeGo" is a well equipped 34 with many recent updates and upgrades. Low engine hours on the 240 HP Yanmar and 5 KW generator, air conditioning, new teak and holly floors, Stern thruster, new interior cushions, and so much more. The recent refit was completed in 2019 with over \$50K spent. A great vessel for the Loop or for weekend cruising.

## Basic Information

---

**Category:** Trawler Yacht

**Model Year:** 1980

**Year Built:** 1980

## Dimensions

---

**LOA:** 34' (10.36mm)

**Beam:** 11.91

**Max Draft:** 2' 10" (0.86mm)

## Speed, Capacities and Weight

---

**Cruise Speed:** 10 Knots Kts. (12 MPH) **Water Capacity:** 50 Gallons

**Holding Tank:** 30 Gal Gallons

**Fuel Capacity:** 220 Gal Gallons

## Accommodations

---

**Total Cabins:** 3

**Total Heads:** 1

---

## Hull and Deck Information

---

**Hull Material:** Fiberglass

---

## Engine Information

---

**Engines:** 1

**Manufacturer:** Yanmar

**Engine Type:** Inboard

**Fuel Type:** Diesel

# PHOTOS

2



3



4



5





6



7



8



9



10



11



12



13



14



15



16



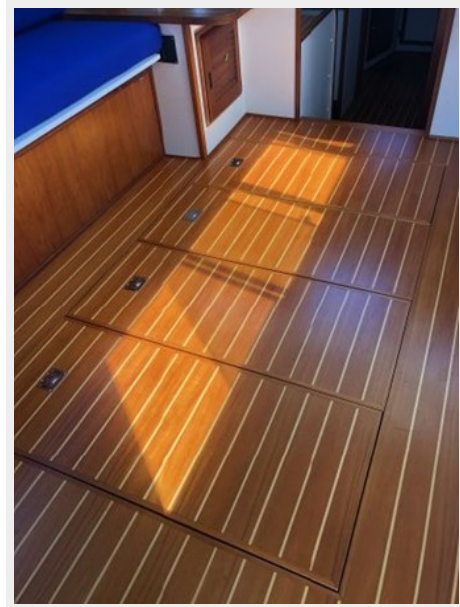
17



18



19



20



21



22



23



24



25



26



27



28



29



30



31



32



33



34



35



36



37



38



39



40



41



42



43



45

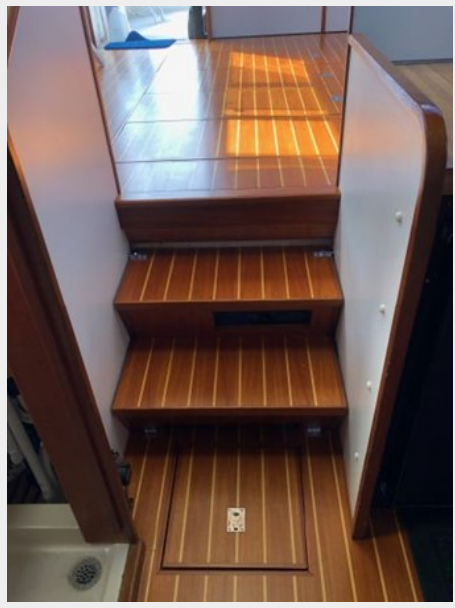


44

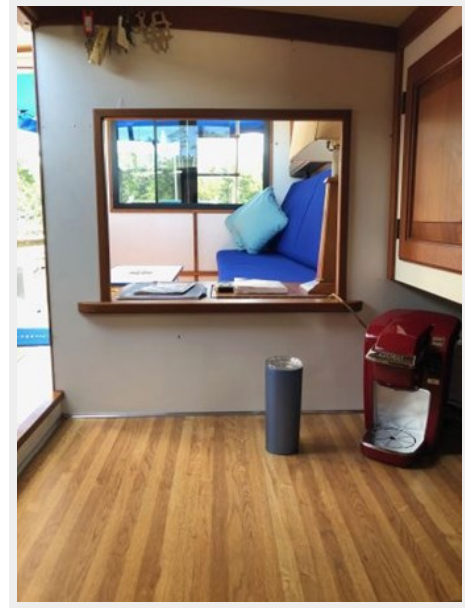




46



47



48



49



50



51



52



53



54



55



56



57



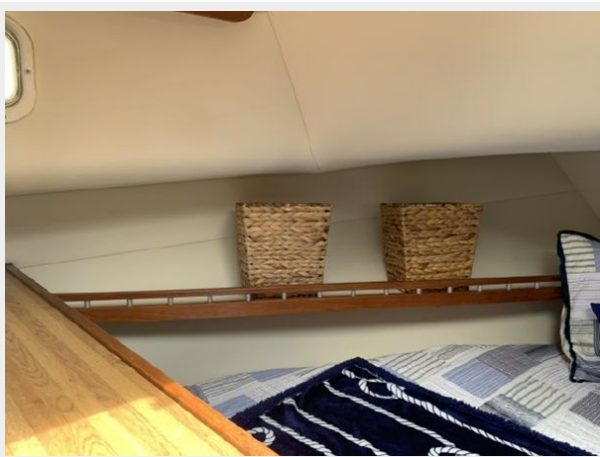
58



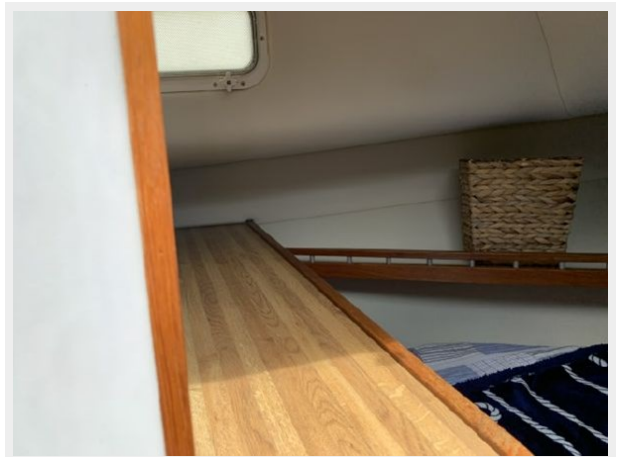
59



60



61



62



63



64



65



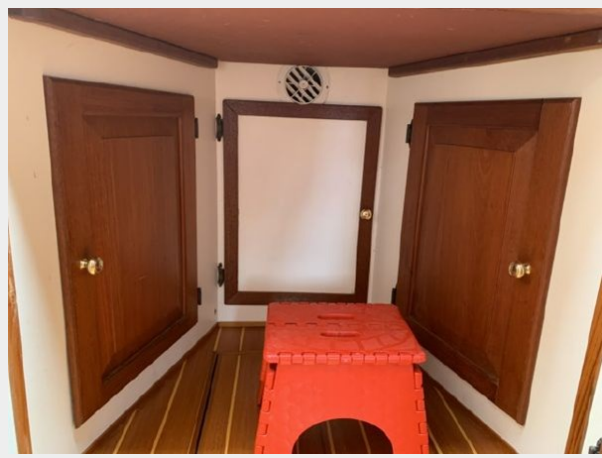
66



67



68



69



70



71



72



73



74



75



76



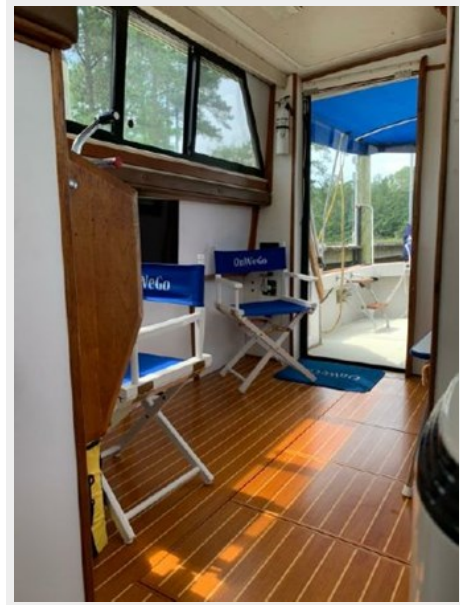
77



78



79



80



81

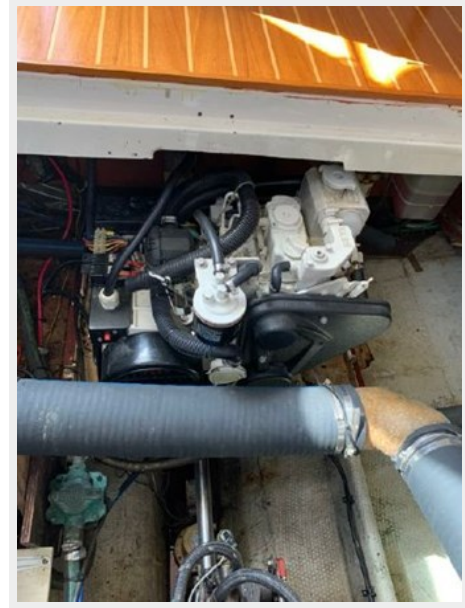




82



83



# CONTACTS

---

Andrey Shestakov, leading yacht broker of the sales department of Shestakov Yacht Sales Inc. Shestakov Yacht Sales Inc., the official representative of the Miami/Fort Lauderdale FL headquarters.

## Contact details

---

Email: **andrey@shestakovyachtsales.com**

Web: [shestakovyachtsales.com/en/](https://shestakovyachtsales.com/en/)

## Telephones

---

USA: **+1(954)274-4435**

## Office hours

---

Monday – Saturday: **9:00 - 21:00** EDT

Sunday: **closed**

## Address

---



Harbour Towne Marina, 850 NE 3rd St, STE 213, Dania, FL 33004