

## PELIKAN — BENETEAU



**Builder:** BENETEAU

**Year Built:** 2004

**Model:** Cruising Sailboat

**Price:** PRICE ON APPLICATION

**LOA:** 33' (10.06mm)

**Beam:** 11.33

**Max Draft:** 5' 6" (1.68mm)

Our experienced yacht broker, Andrey Shestakov, will help you choose and buy a yacht that best suits your needs **Pelikan — BENETEAU** from our catalogue. Presently, at Shestakov Yacht Sales Inc., we have a wide variety of yachts available on our sale's list. We also work in close contact with all the big yacht manufacturers from all over the world.

If you would like to buy a yacht **Pelikan — BENETEAU** or would like help answering any questions concerning purchasing, selling or chartering a yacht, please call **+1(954)274-4435**

# TABLE OF CONTENTS

TABLE OF CONTENTS	2
SPECIFICATIONS	5
Overview	5
Basic Information	5
Dimensions	5
Speed, Capacities and Weight	5
Accommodations	5
Hull and Deck Information	5
Engine Information	6
PHOTOS	7
2	7
3	7
5	7
4	7
7	8
6	8
8	8
9	8
10	9
11	9
12	9
13	9
14	10
15	10
17	10
16	10
19	11
18	11

20	11
21	11
22	12
23	12
24	12
25	12
27	12
26	12
28	13
29	13
30	13
31	13
32	14
33	14
34	14
35	14
36	15
37	15
38	15
39	15
40	15
41	15
43	16
42	16
44	16
45	16
46	17
47	17
48	17

---

49	17
51	18
50	18
CONTACTS	19
Contact details	19
Telephones	19
Office hours	19
Address	19

---

# SPECIFICATIONS

---

## Overview

---

The Beneteau 331 is a very capable compact cruiser that packs a lot of features in an easily handled package. This boat has air conditioning, refrigeration, comfortable cockpit with two staterooms. The shoal draft makes her a perfect fit for coastal cruising, the Bahamas and the Caribbean.

## Basic Information

---

**Category:** Cruising Sailboat

**Model Year:** 2004

**Year Built:** 2004

## Dimensions

---

**LOA:** 33' (10.06mm)

**LWL:** 30' 6" (9.3mm)

**Beam:** 11.33

**Max Draft:** 5' 6" (1.68mm)

## Speed, Capacities and Weight

---

**Water Capacity:** 48 Gallons

**Fuel Capacity:** 18 Gal Gallons

## Accommodations

---

**Total Cabins:** 2

**Total Berths:** 2

**Total Heads:** 1

## Hull and Deck Information

---

**Hull Material:** Fiberglass

---

## Engine Information

---

**Engines:** 1

**Manufacturer:** Yanmar

**Engine Type:** Inboard

**Fuel Type:** Diesel

# PHOTOS

2



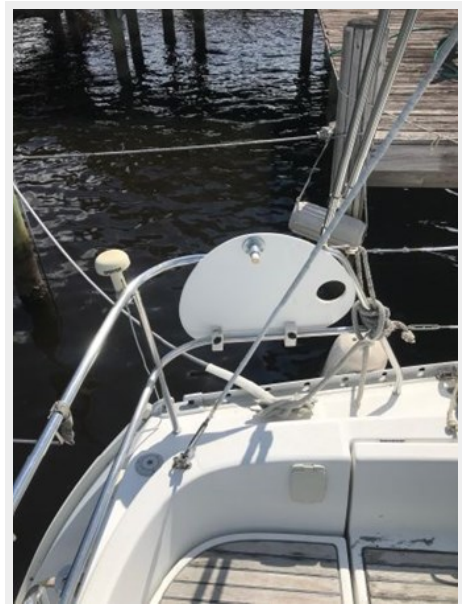
3



4



5



6



7



8



9





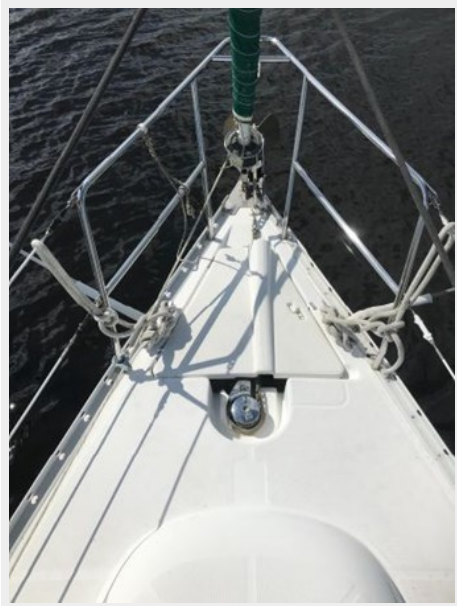
10



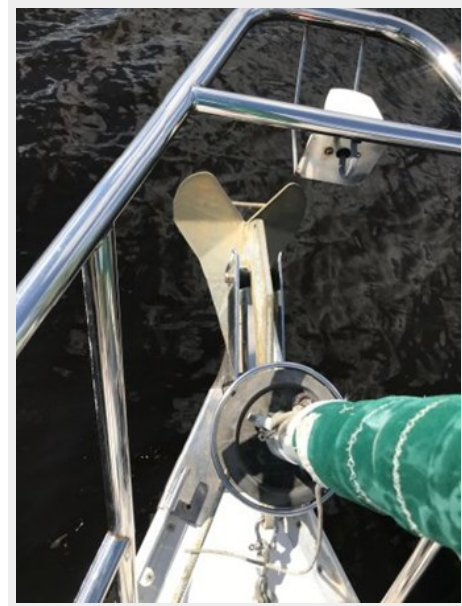
11



12



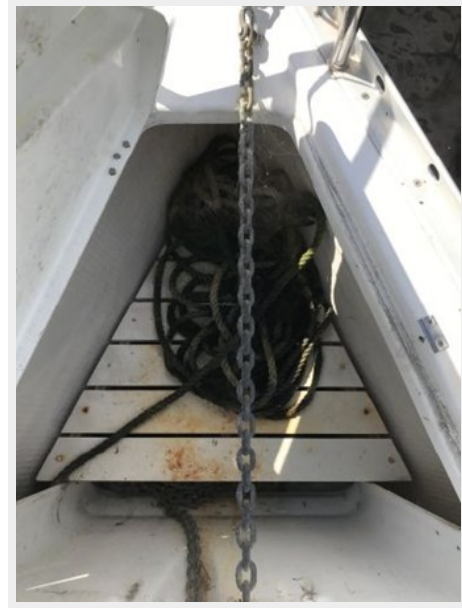
13



14



15



17



16



18



19



20



21



22



23



24



25



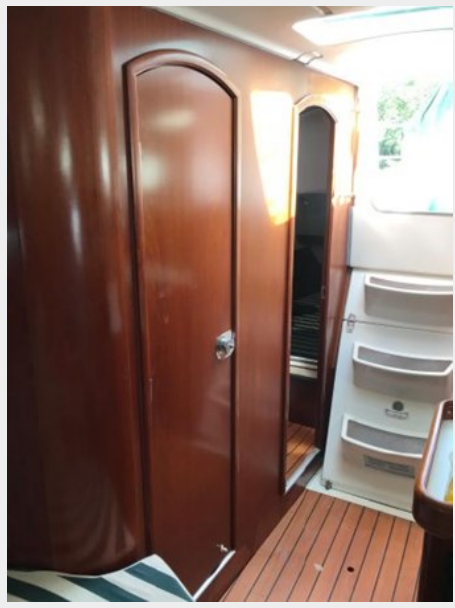
27



26



28



29



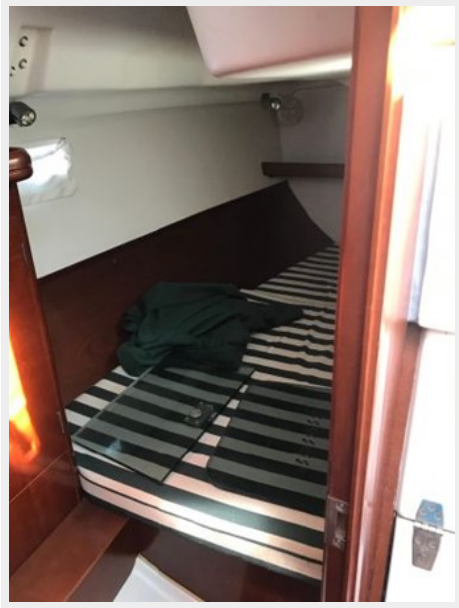
30



31



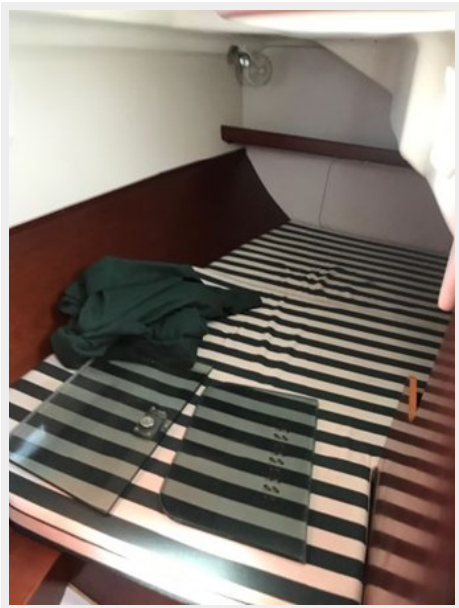
32



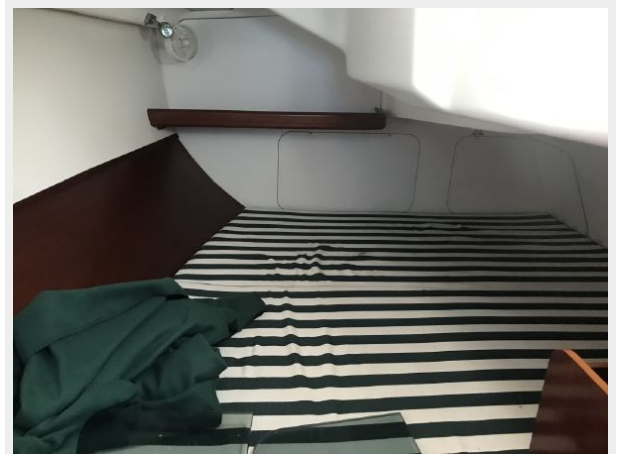
33



34



35



36



37



38



39



40



41



42



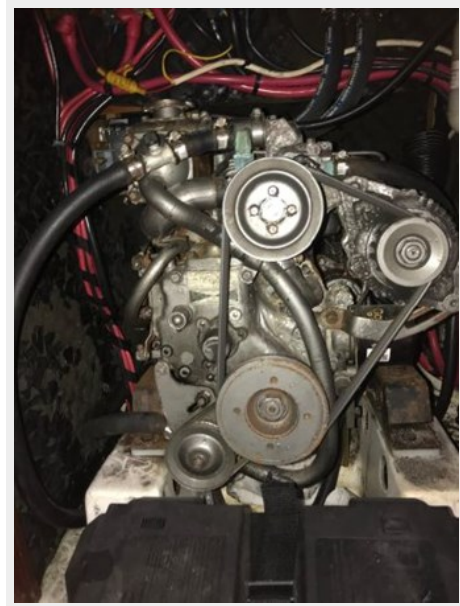
43



44



45





46



47



48



49



50



51



# CONTACTS

---

Andrey Shestakov, leading yacht broker of the sales department of Shestakov Yacht Sales Inc. Shestakov Yacht Sales Inc., the official representative of the Miami/Fort Lauderdale FL headquarters.

## Contact details

---

Email: [andrey@shestakovyachtsales.com](mailto:andrey@shestakovyachtsales.com)

Web: [shestakovyachtsales.com/en/](http://shestakovyachtsales.com/en/)

## Telephones

---

USA: +1(954)274-4435

## Office hours

---

Monday – Saturday: **9:00 - 21:00** EDT

Sunday: **closed**

## Address

---



Harbour Towne Marina, 850 NE 3rd St,  
STE 213, Dania, FL 33004