

## JAMMIN' — NONSUCH



**Builder:** NONSUCH

**LOA:** 30' (9.14mm)

**Year Built:** 1986

**Beam:** 11.83

**Model:** Daysailer

**Max Draft:** 4' 10" (1.47mm)

**Price:** PRICE ON APPLICATION

Our experienced yacht broker, Andrey Shestakov, will help you choose and buy a yacht that best suits your needs **Jammin' — NONSUCH** from our catalogue. Presently, at Shestakov Yacht Sales Inc., we have a wide variety of yachts available on our sale's list. We also work in close contact with all the big yacht manufacturers from all over the world.

If you would like to buy a yacht **Jammin' — NONSUCH** or would like help answering any questions concerning purchasing, selling or chartering a yacht, please call **+1(954)274-4435**

---

# TABLE OF CONTENTS

---

TABLE OF CONTENTS	2
SPECIFICATIONS	4
Overview	4
Basic Information	5
Dimensions	5
Speed, Capacities and Weight	5
Accommodations	5
Hull and Deck Information	5
Engine Information	5
PHOTOS	6
2	6
3	6
4	6
5	6
6	7
7	7
8	7
9	7
10	8
11	8
13	8
12	8
14	9
15	9
16	9
17	9
18	9
19	9

---

20	10
21	10
23	10
22	10
24	10
25	10
27	11
26	11
29	11
28	11
31	12
30	12
33	12
32	12
34	13
35	13
36	13
37	13
39	14
38	14
<b>CONTACTS</b>	<b>15</b>
Contact details	15
Telephones	15
Office hours	15
Address	15

---

# SPECIFICATIONS

---

## Overview

---

No Reasonable offers refused!

ONE LOVE.

Jammin' the Nonsuch classic daysailer. Nonsuch sailboats designed by Mark Ellis makes this well know and respected design timeless. Comfort in handling and living, drink-ability is best in class! Solid / stable full beam boat with a wishbone rigging that "Won't hit you in the head". This vessel has shallow draft and is designed for day sailing or extended family cruising.

Current owner has cared for and enjoyed his time with the boat and is ready for new adventure.

Features Include:

- New Windvane Mast 2015
- New topping lift, blocks and halyards
- New running lights
- Forward Stateroom with large 48" wide double birth with abundant storage
- Hanging Lockers
- Louvered bifold doors separates forward stateroom from main & galley
- Oversized full beam cabin with generous headroom and abundant space for living.
- Huge foldable dinette with "L" shaped settee great for entertaining and family sleeping
- Abundant hanging lockers and storage throughout
- Removable companionway giving ease to access engine
- Fully enclosed electric head and separate dual entry shower
- Full galley with 12volt refrigeration w/ freezer
- 2 burner propane stove with oven and solenoid shut-off
- Hot / Cold pressure water system
- Deep Stainless Steel Sink in Galley
- functioning electronics VHF, Depth Sounder, Autohelm 4000 Autopilot ( 1995)
- Westerbeke Diesel 27 HP engine with 2000 hrs

- cockpit cushions / Bimini Top

## Basic Information

---

**Category:** Daysailer

**Model Year:** 1986

**Year Built:** 1986

## Dimensions

---

**LOA:** 30' (9.14mm)

**Beam:** 11.83

**Max Draft:** 4' 10" (1.47mm)

## Speed, Capacities and Weight

---

**Water Capacity:** 86 Gallons

**Holding Tank:** 24 Gal Gallons

**Fuel Capacity:** 30 Gal Gallons

## Accommodations

---

**Total Cabins:** 1

**Total Berths:** 1

**Total Heads:** 1

## Hull and Deck Information

---

**Hull Material:** Fiberglass

## Engine Information

---

**Engines:** 1

**Manufacturer:** westerbeke

**Engine Type:** Inboard

**Fuel Type:** Diesel

# PHOTOS

2



3



4



5



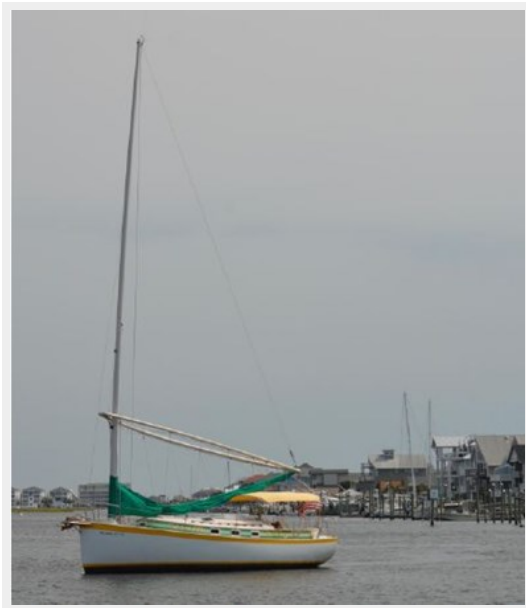
6



7



8



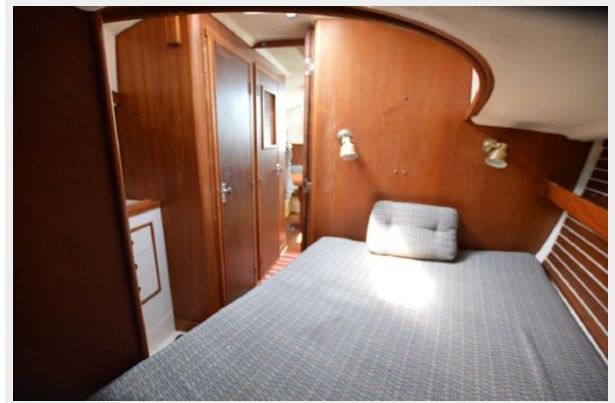
9



10



11



13



12





14



15



16



17



18



19



20



21



23



22



24



25



26



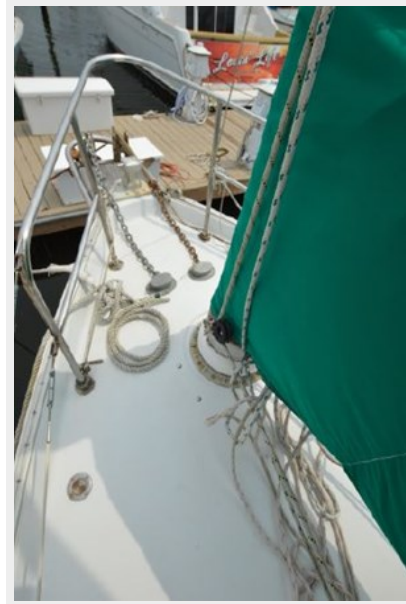
27



28



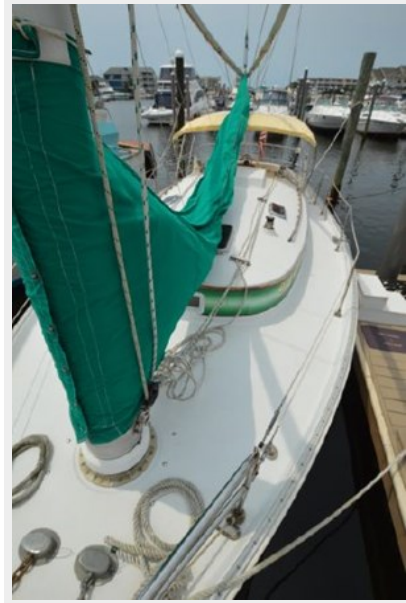
29



30



31



33



32



34



35



36



37



38



39



---

# CONTACTS

---

Andrey Shestakov, leading yacht broker of the sales department of Shestakov Yacht Sales Inc. Shestakov Yacht Sales Inc., the official representative of the Miami/Fort Lauderdale FL headquarters.

---

## Contact details

---

Email: [andrey@shestakovyachtsales.com](mailto:andrey@shestakovyachtsales.com)

Web: [shestakovyachtsales.com/en/](http://shestakovyachtsales.com/en/)

---

## Telephones

---

USA: +1(954)274-4435

---

## Office hours

---

Monday – Saturday: **9:00 - 21:00** EDT

Sunday: **closed**

---

## Address

---



Harbour Towne Marina, 850 NE 3rd St,  
STE 213, Dania, FL 33004