

2019 BENETEAU ANTARES 23 — BENETEAU



Builder: BENETEAU

Year Built: 2019

Model: Cruising Yacht

Price: PRICE ON APPLICATION

LOA: 27' (8.23mm)

Beam: 9.08

Min Draft: 2' (0.61mm)

Max Draft: 2' 7" (0.79mm)

Cruise Speed: 19 Knots Kts. (22 MPH)

Max Speed: 35 Knots Kts. (40 MPH)

Our experienced yacht broker, Andrey Shestakov, will help you choose and buy a yacht that best suits your needs 2019 Beneteau Antares 23 — BENETEAU from our catalogue. Presently, at Shestakov Yacht Sales Inc., we have a wide variety of yachts available on our sale's list. We also work in close contact with all the big yacht manufacturers from all over the world.

If you would like to buy a yacht 2019 Beneteau Antares 23 — BENETEAU or would like help answering any questions concerning purchasing, selling or chartering a yacht, please call +1(954)274-4435

TABLE OF CONTENTS

TABLE OF CONTENTS	2
SPECIFICATIONS	4
Overview	4
Basic Information	4
Dimensions	4
Speed, Capacities and Weight	4
Accommodations	5
Hull and Deck Information	5
Engine Information	5
PHOTOS	6
2	6
3	6
4	6
5	6
6	6
7	6
8	7
9	7
10	7
11	7
13	7
12	7
15	8
14	8
16	8
17	8
CONTACTS	9
Contact details	9

Telephones	9
Office hours	9
Address	9

SPECIFICATIONS

Overview

Agile, powerful and very habitable, the Antares 23 oozes character. The ideal boat for exploring new shores, she is wonderful for taking a break for a few days, confident that you are completely safe. The Antares 23 has a new flared-out hull that delivers wonderful driving sensations while boasting excellent seakeeping. The dynamic V design of the cap clearly announces the boat's stunning aesthetic design. Its clever deck plan offers three different possible cockpit seat layouts. Unique on a boat this size, the Antares 23's habitability sets it apart from other motor cruisers in this category. The wheelhouse is accessed by a large sliding glass door, sheltering a well-equipped modular living space. There is a real double cabin below the wheelhouse at the bow of the boat, with storage and a shower en suite, so you can stay on board for a few days. With walnut stained woodwork, the boat offers a very contemporary atmosphere.

Basic Information

Category: Cruising Yacht

Model Year: 2019

Year Built: 2019

Dimensions

LOA: 27' (8.23mm)

LWL: 22' 11" (6.98mm)

Beam: 9.08

Min Draft: 2' (0.61mm)

Max Draft: 2' 7" (0.79mm)

Speed, Capacities and Weight

Cruise Speed: 19 Knots Kts. (22 MPH)

Max Speed: 35 Knots Kts. (40 MPH)

Water Capacity: 26 Gallons

Fuel Capacity: 74 Gal Gallons

Accommodations

Total Cabins: 1

Total Berths: 2

Total Heads: 1

Hull and Deck Information

Hull Material: Fiberglass

Engine Information

Engines: 1

Manufacturer: Mercury

Engine Type: Outboard

Fuel Type: Gas

PHOTOS

2



3



4



5



6



7



8



9



10



11



12



13



14



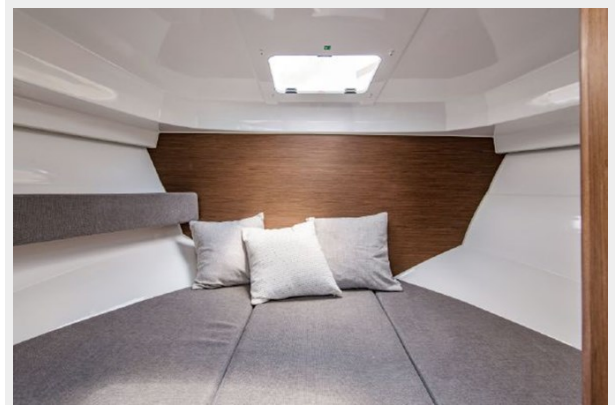
15



16



17



CONTACTS

Andrey Shestakov, leading yacht broker of the sales department of Shestakov Yacht Sales Inc. Shestakov Yacht Sales Inc., the official representative of the Miami/Fort Lauderdale FL headquarters.

Contact details

Email: andrey@shestakovyachtsales.com

Web: shestakovyachtsales.com/en/

Telephones

USA: +1(954)274-4435

Office hours

Monday – Saturday: **9:00 - 21:00** EDT

Sunday: **closed**

Address



Harbour Towne Marina, 850 NE 3rd St,
STE 213, Dania, FL 33004