

HARAMITA — TAYANA



Builder: TAYANA

Year Built: 1995

Model: Center Cockpit

Price: PRICE ON APPLICATION

Location: Japan

LOA: 42' (12.8mm)

Beam: 12.5

Min Draft: 5' 10" (1.78mm)

Cruise Speed: 6 Knots Kts. (7 MPH)

Max Speed: 9 Knots Kts. (10 MPH)

Our experienced yacht broker, Andrey Shestakov, will help you choose and buy a yacht that best suits your needs **Haramita — TAYANA** from our catalogue. Presently, at Shestakov Yacht Sales Inc., we have a wide variety of yachts available on our sale's list. We also work in close contact with all the big yacht manufacturers from all over the world.

If you would like to buy a yacht **Haramita — TAYANA** or would like help answering any questions concerning purchasing, selling or chartering a yacht, please call **+1(954)274-4435**

TABLE OF CONTENTS

TABLE OF CONTENTS	2
SPECIFICATIONS	4
Overview	4
Basic Information	4
Dimensions	4
Speed, Capacities and Weight	4
Accommodations	4
Hull and Deck Information	5
Engine Information	5
PHOTOS	6
IMG_20201020_073204	6
IMG_20201019_153146	6
IMG_20201026_091309	6
IMG_20201020_073319	6
IMG_20201026_090909	7
IMG_20201026_091414	7
IMG_20201019_160928	7
IMG_20201019_160941	7
IMG_20201019_161427 (1)	7
IMG_20201019_161646	7
IMG_20201019_161543	8
IMG_20201019_161516	8
IMG_20201019_163534	8
IMG_20201019_151951 (1)	8
IMG_20201020_080952 (1)	9
IMG_20201020_080318	9
IMG_20201019_155351	9
CONTACTS	10

Contact details	10
Telephones	10
Office hours	10
Address	10

SPECIFICATIONS

Overview

Beautiful, well equipped and cared for 1995 Tayana CC

One owner Day and Ocean sailorWe have taken to the South (Vanuatu) 2008-2009Sailing around Japan islands

Good long distance or day trip vessel

Basic Information

Category: Center Cockpit

Sub Category: Cruising Sailboat

Model Year: 1995

Year Built: 1995

Country: Japan

Dimensions

LOA: 42' (12.8mm)

Beam: 12.5

Min Draft: 5' 10" (1.78mm)

Speed, Capacities and Weight

Cruise Speed: 6 Knots Kts. (7 MPH)

Max Speed: 9 Knots Kts. (10 MPH)

Gross Tonnage: 22000 Pounds

Water Capacity: 300 Gallons

Holding Tank: 150 Gal Gallons

Fuel Capacity: 320 Gal Gallons

Accommodations

Total Cabins: 2

Sleeps: 6

Total Heads: 2

Hull and Deck Information

Hull Material: FRP

Engine Information

Engines: 1

Manufacturer: Yanmar

Engine Type: Inboard

Fuel Type: Diesel

PHOTOS

IMG_20201020_073204



IMG_20201019_153146



IMG_20201026_091309



IMG_20201020_073319



IMG_20201026_090909



IMG_20201026_091414



IMG_20201019_160928



IMG_20201019_160941



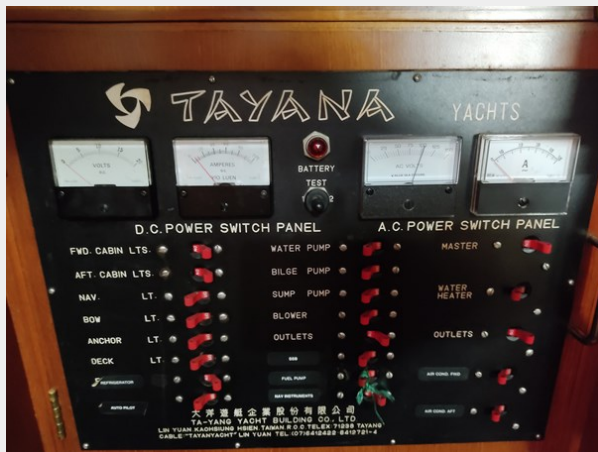
IMG_20201019_161427 (1)



IMG_20201019_161646



IMG_20201019_161516



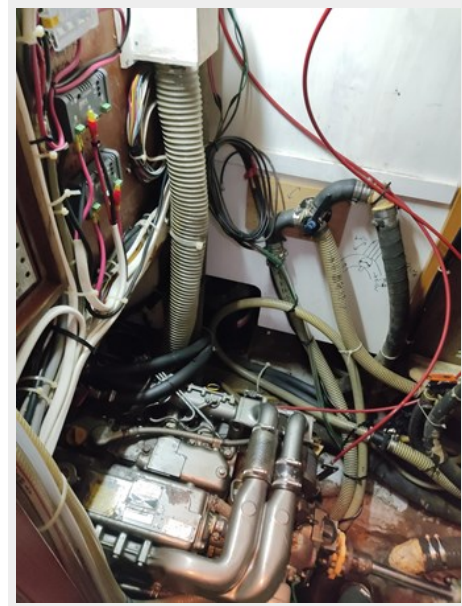
IMG_20201019_161543



IMG_20201019_151951 (1)

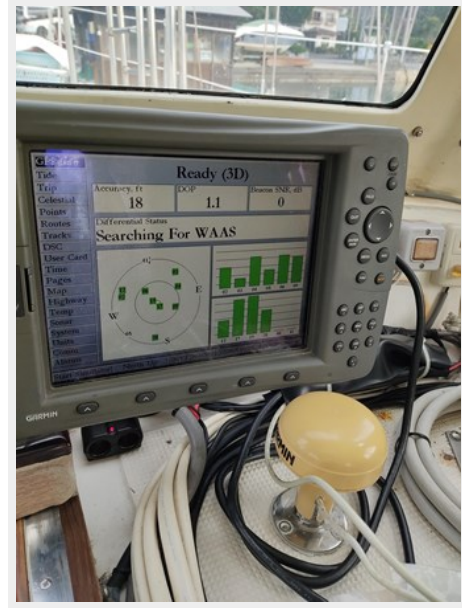
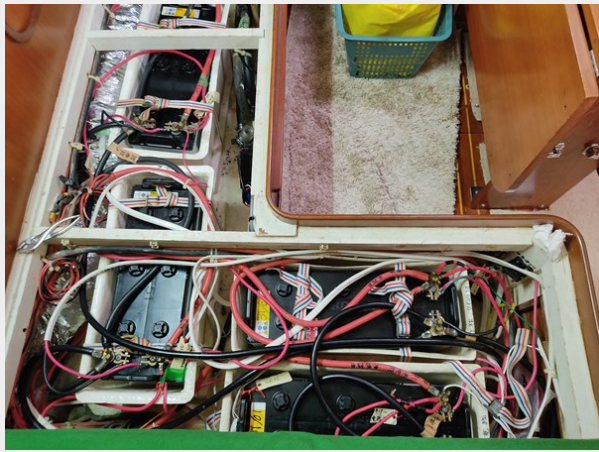


IMG_20201019_163534



IMG_20201020_080952 (1)

IMG_20201020_080318



IMG_20201019_155351



CONTACTS

Andrey Shestakov, leading yacht broker of the sales department of Shestakov Yacht Sales Inc. Shestakov Yacht Sales Inc., the official representative of the Miami/Fort Lauderdale FL headquarters.

Contact details

Email: andrey@shestakovyachtsales.com

Web: shestakovyachtsales.com/en/

Telephones

USA: +1(954)274-4435

Office hours

Monday – Saturday: **9:00 - 21:00** EDT

Sunday: **closed**

Address



Harbour Towne Marina, 850 NE 3rd St,
STE 213, Dania, FL 33004