

ATHENA — CALIFORNIAN



Builder: CALIFORNIAN

Year Built: 1989

Model: Motor Yacht

Price: PRICE ON APPLICATION

Location: United States

LOA: 55' (16.76m)

Beam: 15.16

Max Draft: 4' 3" (1.3m)

Cruise Speed: 10 Knots Kts. (12 MPH)

Max Speed: 17 Knots Kts. (20 MPH)

Our experienced yacht broker, Andrey Shestakov, will help you choose and buy a yacht that best suits your needs **Athena — CALIFORNIAN** from **our catalogue**. Presently, at **Shestakov Yacht Sales Inc.**, we have a wide variety of yachts available on **our sale's list**. We also work in close contact with all the big **yacht manufacturers** from all over the world.

If you would like to buy a yacht **Athena — CALIFORNIAN** or would like help answering any questions concerning purchasing, selling or chartering a yacht, please call **+1(954)274-4435**

TABLE OF CONTENTS

TABLE OF CONTENTS	2
SPECIFICATIONS	5
Overview	5
Basic Information	5
Dimensions	5
Speed, Capacities and Weight	5
Accommodations	6
Hull and Deck Information	6
Engine Information	6
PHOTOS	7
DSC_0046	7
DSC_0053	7
DSC_0049	7
DSC_0043	7
DSC_0042	7
DSC_0040	7
DSC_0039	8
DSC_0038	8
DSC_0045	8
DSC_0055	8
DSC_0056	8
DSC_0057	8
DSC_0059	9
DSC_0060	9
DSC_0061	9
DSC_0062	9
DSC_0064	9
DSC_0066	9

DSC_0067	10
DSC_0068	10
DSC_0069	10
DSC_0070	10
DSC_0071	10
DSC_0072	10
DSC_0073	11
DSC_0074	11
DSC_0075	11
DSC_0076	11
DSC_0077	11
DSC_0078	11
DSC_0001	12
DSC_0002	12
DSC_0003	12
DSC_0004	12
DSC_0005	13
DSC_0006	13
DSC_0007	13
DSC_0008	13
DSC_0009	14
DSC_0010	14
DSC_0011	14
DSC_0012	14
DSC_0013	14
DSC_0014	14
DSC_0015	15
DSC_0016	15
DSC_0018	15

DSC_0017	15
DSC_0019	15
DSC_0020	15
DSC_0021	16
DSC_0022	16
DSC_0023	16
DSC_0024	16
DSC_0025	17
DSC_0026	17
DSC_0027	17
DSC_0028	17
DSC_0029	18
DSC_0030	18
DSC_0031	18
DSC_0032	18
DSC_0033	18
DSC_0034	18
DSC_0035	19
CONTACTS	20
Contact details	20
Telephones	20
Office hours	20
Address	20

SPECIFICATIONS

Overview

The 55' Californian Cockpit MY is considered by most the best looking of this style vessel and this one is very special. Her rakish flush-deck profile adds to the well thought of design. The 55 remains one to the most sought after boats due to the high quality construction and excellent craftsmanship. Her three stateroom interior is tastefully furnished with teak cabinetry and woodwork throughout. A slide out settee in the guest stateroom aft of the salon converts into a double berth, and all three heads are fitted with separate shower stalls. The upscale interior is lavishly decorated with quality fabrics and furnishings throughout. The salon is well appointed and boasts a spacious layout. The aft deck is also very spacious as is the flybridge. ***Also featuring Air Conditioning, Bow Thrusters, Engine Synchronizers and Stabilizers.*** This 55 Californian is conveniently located at our docks on Shelter Island in San Diego, CA

Basic Information

Category: Motor Yacht

Sub Category: Cockpit

Model Year: 1989

Year Built: 1989

Country: United States

Dimensions

LOA: 55' (16.76mm)

Beam: 15.16

Max Draft: 4' 3" (1.3mm)

Speed, Capacities and Weight

Cruise Speed: 10 Knots Kts. (12 MPH) **Max Speed:** 17 Knots Kts. (20 MPH)

Gross Tonnage: 23 Pounds

Water Capacity: 210 Gallons

Holding Tank: 80 Gal Gallons

Fuel Capacity: 650 Gal Gallons

Accommodations

Total Cabins: 3

Hull and Deck Information

Hull Material: Fiberglass

Deck Material: Fiberglass

Hull Configuration: Semi-Displacement **Hull Designer:** Marshal Marine

Engine Information

Engines: 2

Manufacturer: CAT

Engine Type: Inboard

Fuel Type: Diesel

PHOTOS

DSC_0046



DSC_0053



DSC_0049



DSC_0043



DSC_0042



DSC_0040



DSC_0039



DSC_0038



DSC_0045



DSC_0055



DSC_0056



DSC_0057



DSC_0059



DSC_0060



DSC_0061



DSC_0062



DSC_0064



DSC_0066



DSC_0067



DSC_0068



DSC_0069



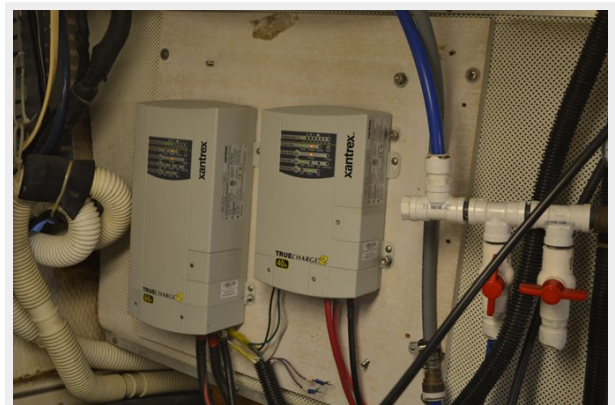
DSC_0070



DSC_0071



DSC_0072



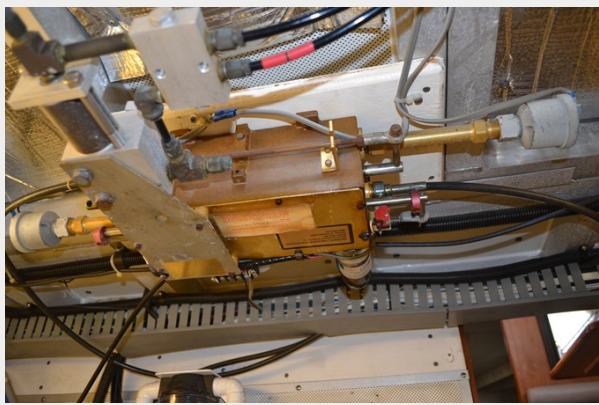
DSC_0073



DSC_0074



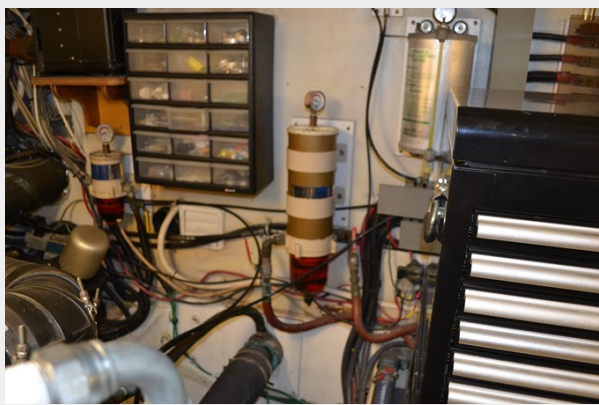
DSC_0075



DSC_0076



DSC_0077



DSC_0078



DSC_0001



DSC_0002



DSC_0003



DSC_0004



DSC_0005



DSC_0006



DSC_0007



DSC_0008



DSC_0009



DSC_0010



DSC_0011



DSC_0012



DSC_0013



DSC_0014



DSC_0015



DSC_0016



DSC_0018



DSC_0017



DSC_0019



DSC_0020



DSC_0021



DSC_0022



DSC_0023



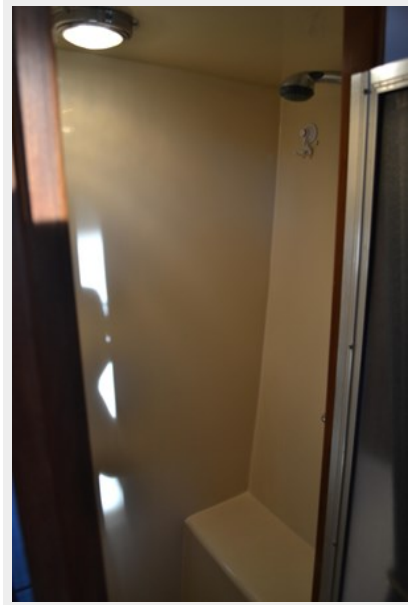
DSC_0024



DSC_0025



DSC_0026



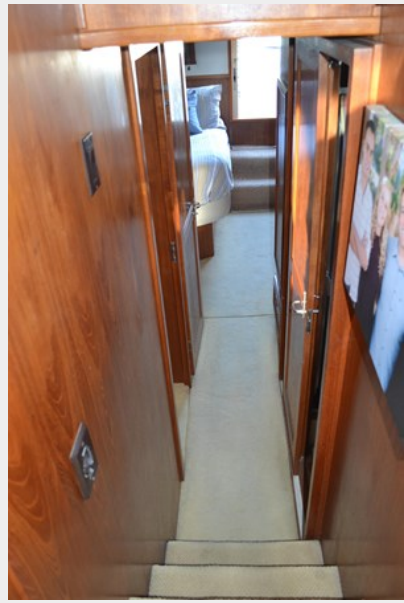
DSC_0027



DSC_0028



DSC_0029



DSC_0030



DSC_0031



DSC_0032



DSC_0033



DSC_0034



DSC_0035



CONTACTS

Andrey Shestakov, leading yacht broker of the sales department of Shestakov Yacht Sales Inc. Shestakov Yacht Sales Inc., the official representative of the Miami/Fort Lauderdale FL headquarters.

Contact details

Email: **andrey@shestakovyachtsales.com**

Web: shestakovyachtsales.com/en/

Telephones

USA: **+1(954)274-4435**

Office hours

Monday – Saturday: **9:00 - 21:00** EDT

Sunday: **closed**

Address



Harbour Towne Marina, 850 NE 3rd St, STE 213, Dania, FL 33004