

## MERMAID V — BERTRAM



**Builder:** BERTRAM

**Year Built:** 1985

**Model:** Cruising Yacht

**Price:** PRICE ON APPLICATION

**Location:** United States

**LOA:** 38' (11.58mm)

**Beam:** 15

**Max Draft:** 5' (1.52mm)

**Cruise Speed:** 25 Knots Kts. (29 MPH)

**Max Speed:** 30 Knots Kts. (35 MPH)

Our experienced yacht broker, Andrey Shestakov, will help you choose and buy a yacht that best suits your needs **MERMAID V — BERTRAM** from our catalogue. Presently, at **Shestakov Yacht Sales Inc.**, we have a wide variety of yachts available on our sale's list. We also work in close contact with all the big yacht manufacturers from all over the world.

If you would like to buy a yacht **MERMAID V — BERTRAM** or would like help answering any questions concerning purchasing, selling or chartering a yacht, please call **+1(954)274-4435**

# TABLE OF CONTENTS

TABLE OF CONTENTS	2
SPECIFICATIONS	4
Overview	4
Basic Information	4
Dimensions	4
Speed, Capacities and Weight	4
Accommodations	4
Hull and Deck Information	5
Engine Information	5
PHOTOS	6
3	6
2	6
4	6
5	6
7	7
6	7
9	7
8	7
11	8
10	8
12	8
13	8
13	9
14	9
14	9
15	9
16	9
15	9

---

17	10
18	10
19	10
20	10
22	10
21	10
24	11
23	11
25	11
26	11
27	11
CONTACTS	12
Contact details	12
Telephones	12
Office hours	12
Address	12

---

# SPECIFICATIONS

---

## Overview

---

New to Market this 1965/2013 completely restored Classic Bertram 38 wide body. This boat was completely redone from bow to stern. Paint, wiring, engines, electronics, interior, acs, etc. This boat shows new and is the true definition of the Cadillac of the seas.

Owner has spent over 600k on the refit.- 2003 Volvo Penta Tamd 74 480hp 1400hrs ( Service Records Available)- 2003 Onan Generator 12.5kw 500hrs- All new Garmin 8xxx installed 2018.- New Interior 2013- New Paint 2013

Refit done by Sea Masters Marine. Survey available.Boat cruises at 25knots and top at 30knots.A true collectors item. More info on the refit and pictures to come.

## Basic Information

---

**Category:** Cruising Yacht

**Model Year:** 1965

**Year Built:** 1985

**Country:** United States

## Dimensions

---

**LOA:** 38' (11.58mm)

**Beam:** 15

**Max Draft:** 5' (1.52mm)

## Speed, Capacities and Weight

---

**Cruise Speed:** 25 Knots Kts. (29 MPH) **Max Speed:** 30 Knots Kts. (35 MPH)

**Fuel Capacity:** 300 Gal Gallons

## Accommodations

---

**Total Cabins:** 2

**Total Heads:** 1

---

## Hull and Deck Information

---

**Hull Material:** Fiberglass

---

## Engine Information

---

**Engines:** 2

**Manufacturer:** Volvo Penta

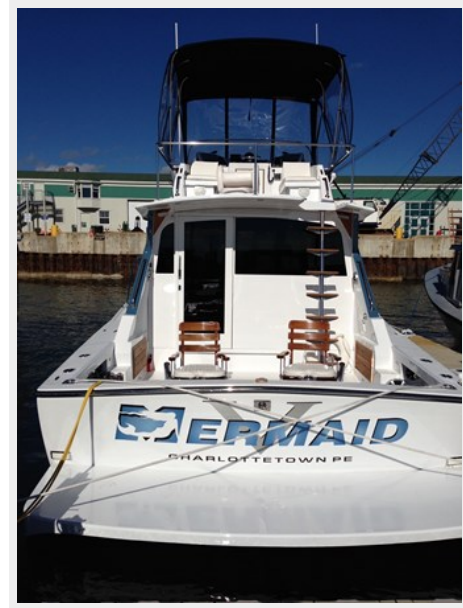
**Engine Type:** Inboard

# PHOTOS

2



3



4



5



6



7



8



9



10



11



12



13





13



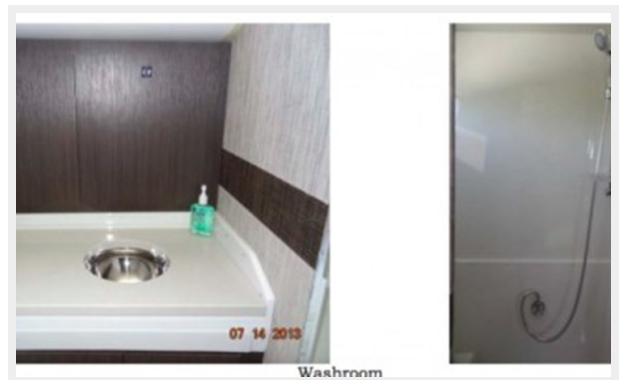
14



14



15



15



16



17



18



19



20



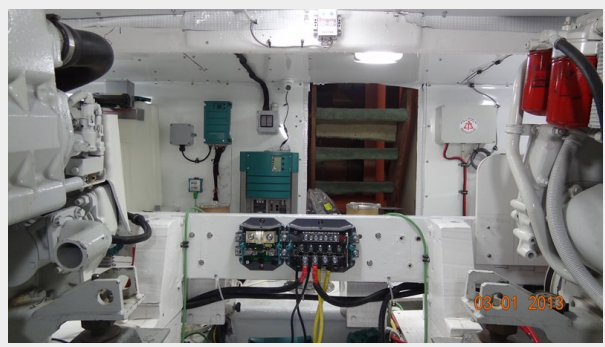
21



22



23



24



25



26



27



# CONTACTS

---

Andrey Shestakov, leading yacht broker of the sales department of Shestakov Yacht Sales Inc. Shestakov Yacht Sales Inc., the official representative of the Miami/Fort Lauderdale FL headquarters.

## Contact details

---

Email: **andrey@shestakovyachtsales.com**

Web: [shestakovyachtsales.com/en/](https://shestakovyachtsales.com/en/)

## Telephones

---

USA: **+1(954)274-4435**

## Office hours

---

Monday – Saturday: **9:00 - 21:00** EDT

Sunday: **closed**

## Address

---



Harbour Towne Marina, 850 NE 3rd St, STE 213, Dania, FL 33004