

WOLVERINE — BURGER



Builder: BURGER

Year Built: 1982

Model: Motor Yacht

Price: **PRICE ON APPLICATION**

Location: United States

LOA: 83' (25.3mm)

Beam: 18.41

Min Draft: 5' 6" (1.68mm)

Our experienced yacht broker, Andrey Shestakov, will help you choose and buy a yacht that best suits your needs **WOLVERINE — BURGER** from **our catalogue**. Presently, at **Shestakov Yacht Sales Inc.**, we have a wide variety of yachts available on **our sale's list**. We also work in close contact with all the big **yacht manufacturers** from all over the world.

If you would like to buy a yacht **WOLVERINE — BURGER** or would like help answering any questions concerning purchasing, selling or chartering a yacht, please call **+1(954)274-4435**

TABLE OF CONTENTS

TABLE OF CONTENTS	2
SPECIFICATIONS	5
Overview	5
Basic Information	6
Dimensions	6
Speed, Capacities and Weight	6
Accommodations	6
Hull and Deck Information	6
Engine Information	7
PHOTOS	8
78 ft 1982 Burger Cockpit Motor Yacht, Wolverine	8
78 ft 1982 Burger Cockpit Motor Yacht, Wolverine	8
78 ft 1982 Burger Cockpit Motor Yacht, Wolverine	8
78 ft 1982 Burger Cockpit Motor Yacht, Wolverine	8
78 ft 1982 Burger Cockpit Motor Yacht, Wolverine	9
78 ft 1982 Burger Original Factory Cockpit	9
78 ft 1982 Burger Cockpit Motor Yacht, Wolverine 78 ft 1982 Burger Original Factory Cockpit	9
78 ft 1982 Burger Original Factory Cockpit & Swim Platform	9
Wolverine Bow	10
Wolverine_Port Bow	10
Wolverine_Bow Seating	10
Wolverine_Bow	10
Wolverine_Bow Seating	10
Wolverine_Aft Saloon	10
Wolverine_Aft Saloon	11
Wolverine_Aft Saloon	11
Wolverine_Aft Saloon	11

Wolverine_Aft Saloon	11
Wolverine_Aft Saloon Bar	11
Wolverine_Lower Salon	11
Wolverine_Lower Salon	12
Wolverine_Lower Salon	12
Wolverine_Lower Salon	12
Wolverine_Lower Salon	12
Wolverine_Pilothouse	12
Wolverine_Pilot House looking Aft	12
Wolverine_Pilothouse Seating	13
Wolverine_Galley	13
Wolverine_Galley	13
Wolverine_Master Suite	13
Wolverine_King Size Berth	13
Wolverine_Master Suite	13
Wolverine_Master with Ensuite	14
Wolverine_Guest Stateroom	14
Wolverine_Flybridge Helm	14
Wolverine_Flybridge Helm	14
Wolverine_Flybridge Helm	14
Wolverine_Flybridge	14
Wolverine_Flybridge Dining	15
Wolverine_Flybridge Seating	15
Wolverine_Flybridge Grill	15
Wolverine_Flybridge Seating	15
78 ft 1982 Burger Cockpit Motor Yacht, Wolverine	15
78 ft 1982 Burger Cockpit Motor Yacht, Wolverine	15
78 ft 1982 Burger Cockpit Motor Yacht, Wolverine	16
78 ft 1982 Burger Cockpit Motor Yacht, Wolverine	16

Wolverine-Caption Forward water tank inspection/clean out hatch has been enlarged for better access to the double bottom water tank	16
78 ft 1982 Burger Cockpit Motor Yacht, Wolverine	16
78 ft 1982 Burger Cockpit Motor Yacht, Wolverine	17
78 ft 1982 Burger Cockpit Motor Yacht, Wolverine	17
78 ft 1982 Burger Cockpit Motor Yacht, Wolverine	17
Wolverine Bow Thruster	17
78 ft 1982 Burger Cockpit Motor Yacht, Wolverine	18
Wolverine when she was brand new!	18
CONTACTS	19
Contact details	19
Telephones	19
Office hours	19
Address	19

SPECIFICATIONS

Overview

- ***Impressive survey including audio gauge 8/2020.***
- ***The 23.8m / 78'1 custom Motor yacht 'Wolverine' was built by Burger. This luxury vessel's sophisticated exterior design and engineering are the work of Sparkman & Stephens. Previously named Electra, (Silver Seas, Harvest Moon) Her exterior is styled by the Sparkman & Stephens team who are also responsible for the entire engineering package.***
- Owners have a larger Burger MY (91' RPH) now and priced Wolverine aggressively. Healthy example of this beautiful classic.
- Opportunity to own a high quality traditional cruising yacht with a beautiful profile. Small enough for the ICW but large enough to go to sea with a crowd.
- Factory 78' cockpit motor yacht in above average to good condition
- Main engines replaced in 2001
- 2 X 20KW Onans replaced in 1999
- TNT hydraulic swim deck and Novarania added 2007
- Bottom maintenance 2020
- 3 staterooms aft plus crew forward
- Bow thruster and stabilized
- Wolverine is a 78' Burger flybridge cruiser. She resembles the classic style of the 1930's Wall street commuters, but with all the amenities of a modern yacht. This is a rare Burger with a factory cockpit, not an add on, so propellers and rudders are in the proper location. She can be boarded from a floating dock from the swim platform and cockpit, then up a set of steps to the aft saloon with L seating and bar.
- Once on the main deck there is easy access to the foredeck seating area and the trunk cabin sunning area (much safer than many yachts because its about 4' above the main deck. From the side deck the **aft saloon can be entered from the wing doors**, port and starboard, or the sliding pilothouse doors. From the pilot house there is stairs to the well equipped flybridge.
- A few steps down from the **pilothouse** is the **lower saloon** which can be used for dining. Next forward is the **galley** (lower saloon level) and **crew quarters for two** and engine room access and washer and drier. Aft of the lower saloon down, a set of gradual steps, is the **master stateroom**, centerline king berth with ensuite head. Forward are two over size twin bed **guest staterooms** with ensuite heads. The starboard guest stateroom head has a second door to serve as a dayhead. The original rich walnut joiner work is still in good condition.
- Wolverine is blessed with good looks, good speed, shallow draft, and a great price to accomplish a quick sale.
- Layout diagram is attached

- Exterior was painted 4 years ago and she looks very presentable because she has been dry stored out of the sun in the winter.
- Original boat deck davit was removed when TNT platform was added for a tender. The original tender area has been enclosed with railings and is now a safe open air lounge area with a bbq grille, complementing the covered flybridge.

Basic Information

Category: Motor Yacht

Sub Category: Classic

Model Year: 1982

Year Built: 1982

Country: United States

Dimensions

LOA: 83' (25.3mm)

LOD: 77' (23.47mm)

Beam: 18.41

Min Draft: 5' 6" (1.68mm)

Speed, Capacities and Weight

Gross Tonnage: 99 Pounds

Water Capacity: 1230 Gallons

Holding Tank: 50 Gal Gallons

Fuel Capacity: 2500 Gal Gallons

Accommodations

Total Cabins: 3

Total Berths: 5

Sleeps: 6

Total Heads: 4

Crew Cabin: 3

Hull and Deck Information

Hull Material: Aluminum

Engine Information

Engines: 2

Manufacturer: Detroit Diesel

Engine Type: Inboard

Fuel Type: Diesel

PHOTOS

78 ft 1982 Burger Cockpit Motor Yacht, Wolverine



78 ft 1982 Burger Cockpit Motor Yacht, Wolverine



78 ft 1982 Burger Cockpit Motor Yacht, Wolverine



78 ft 1982 Burger Cockpit Motor Yacht, Wolverine



78 ft 1982 Burger Cockpit Motor Yacht, Wolverine



78 ft 1982 Burger Original Factory Cockpit



78 ft 1982 Burger Cockpit Motor Yacht, Wolverine 78 ft 1982 Burger Original Factory Cockpit



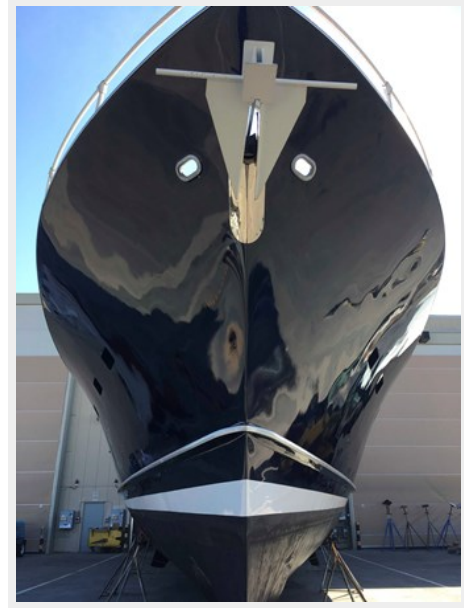
78 ft 1982 Burger Original Factory Cockpit & Swim Platform



Wolverine_Port Bow



Wolverine Bow



Wolverine_Bow Seating



Wolverine_Bow



Wolverine_Bow Seating



Wolverine_Aft Saloon



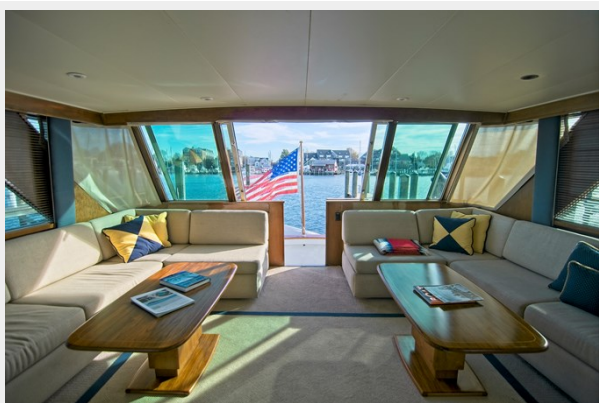
Wolverine_Aft Saloon



Wolverine_Aft Saloon



Wolverine_Aft Saloon



Wolverine_Aft Saloon



Wolverine_Aft Saloon Bar



Wolverine_Lower Salon



Wolverine_Lower Salon



Wolverine_Lower Salon



Wolverine_Lower Salon



Wolverine_Lower Salon



Wolverine_Pilothouse



Wolverine_Pilot House looking Aft



Wolverine_Pilothouse Seating



Wolverine_Galley



Wolverine_Galley



Wolverine_Master Suite



Wolverine_Master Suite



Wolverine_King Size Berth



Wolverine_Master with Ensuite



Wolverine_Guest Stateroom



Wolverine_Flybridge Helm



Wolverine_Flybridge Helm



Wolverine_Flybridge Helm



Wolverine_Flybridge



Wolverine_Flybridge Dining



Wolverine_Flybridge Seating



Wolverine_Flybridge Grill



Wolverine_Flybridge Seating



78 ft 1982 Burger Cockpit Motor Yacht, Wolverine



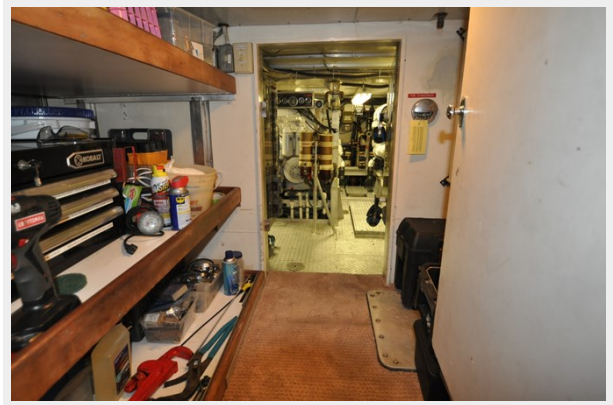
78 ft 1982 Burger Cockpit Motor Yacht, Wolverine



78 ft 1982 Burger Cockpit Motor Yacht, Wolverine



78 ft 1982 Burger Cockpit Motor Yacht, Wolverine



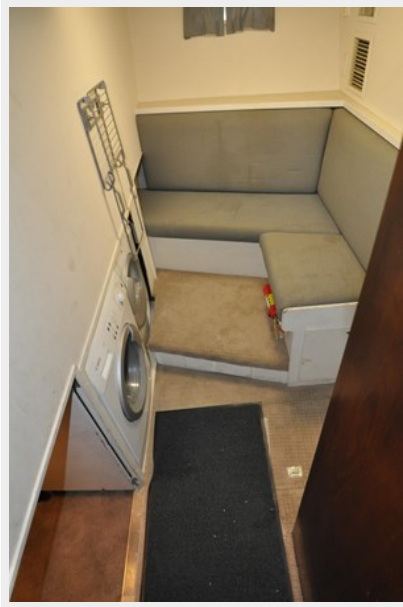
Wolverine-Caption Forward water tank inspection/clean out hatch has been enlarged for better access to the double bottom water tank



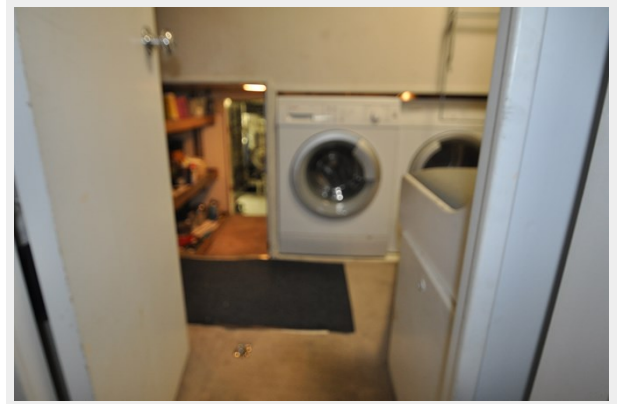
78 ft 1982 Burger Cockpit Motor Yacht, Wolverine



78 ft 1982 Burger Cockpit Motor Yacht, Wolverine



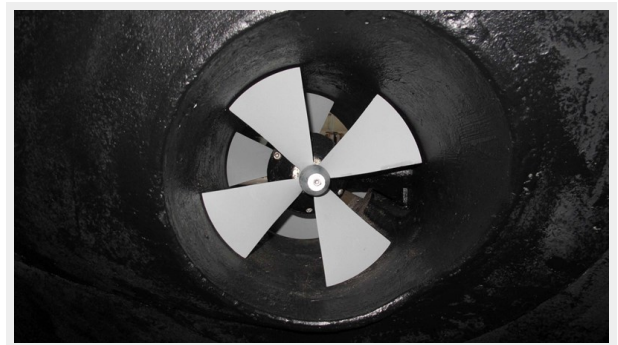
78 ft 1982 Burger Cockpit Motor Yacht, Wolverine



78 ft 1982 Burger Cockpit Motor Yacht, Wolverine



Wolverine Bow Thruster



78 ft 1982 Burger Cockpit Motor Yacht, Wolverine



Wolverine when she was brand new!



CONTACTS

Andrey Shestakov, leading yacht broker of the sales department of Shestakov Yacht Sales Inc. Shestakov Yacht Sales Inc., the official representative of the Miami/Fort Lauderdale FL headquarters.

Contact details

Email: **andrey@shestakovyachtsales.com**

Web: shestakovyachtsales.com/en/

Telephones

USA: **+1(954)274-4435**

Office hours

Monday – Saturday: **9:00 - 21:00** EDT

Sunday: **closed**

Address



Harbour Towne Marina, 850 NE 3rd St, STE 213, Dania, FL 33004