

## **SAGE — ADMIRAL YACHTS**



**Builder:** [ADMIRAL YACHTS](#)

**Year Built:** 2017

**Model:** Motor Yacht

**Price:** **PRICE ON APPLICATION**

**Location:** France

**LOA:** 130' 3" (39.7mm)

**Beam:** 26.24

**Max Draft:** 6' 3" (1.9mm)

**Cruise Speed:** 13.5 Knots Kts. (16 MPH)

**Max Speed:** 19.5 Knots Kts. (22 MPH)

Our experienced yacht broker, Andrey Shestakov, will help you choose and buy a yacht that best suits your needs **Sage — ADMIRAL YACHTS** from **our catalogue**. Presently, at **Shestakov Yacht Sales Inc.**, we have a wide variety of yachts available on **our sale's list**. We also work in close contact with all the big **yacht manufacturers** from all over the world.

If you would like to buy a yacht **Sage — ADMIRAL YACHTS** or would like help answering any questions concerning purchasing, selling or chartering a yacht, please call **+1(954)274-4435**

# TABLE OF CONTENTS

---

TABLE OF CONTENTS	2
SPECIFICATIONS	5
Overview	5
Basic Information	5
Dimensions	5
Speed, Capacities and Weight	6
Accommodations	6
Hull and Deck Information	6
Engine Information	6
PHOTOS	7
Sage model bow	7
41 SAGE 40m Admiral Bow	7
49 SAGE 40m Admiral Running Port Detail	7
52 SAGE 40m Admiral Running Bow	7
43 SAGE 40m Admiral Beach Club	7
27 SAGE 40m Admiral Exterior Dining	7
30 SAGE 40m Admiral Sundeck	8
29 SAGE 40m Admiral Sundeck	8
24 SAGE 40m Admiral Sundeck	8
05 SAGE 40m Admiral Main Salon	8
06 SAGE 40m Admiral Main Salon	8
07 SAGE 40m Admiral Main Salon	9
08 SAGE 40m Admiral Dining Area	9
10 SAGE 40m Admiral Master Stateroom	9
09 SAGE 40m Admiral Dining Area	9
11 SAGE 40m Admiral Master Stateroom	9
12 SAGE 40m Admiral Master Stateroom	9
13 SAGE 40m Admiral Master En Suite	10

14 SAGE 40m Admiral Master En Suite	10
15 SAGE 40m Admiral Second Master	10
16 SAGE 40m Admiral Second Master	10
17 SAGE 40m Admiral Second Master En Suite	10
18 SAGE 40m Admiral VIP	10
19 SAGE 40m Admiral Twin Stateroom	11
20 SAGE 40m Admiral Twin Stateroom	11
21 SAGE 40m Admiral Aft Deck 2	11
21 SAGE 40m Admiral Aft Deck	11
21 SAGE 40m Admiral Sundeck	11
22 SAGE 40m Admiral Sundeck	11
23 SAGE 40m Admiral Sundeck	12
25 SAGE 40m Admiral Sundeck	12
26 SAGE 40m Admiral Exterior Dining Table	12
28 SAGE 40m Sundeck	12
31 SAGE 40m Admiral Stairs	12
32 SAGE 40m Admiral Bridge	12
33 SAGE 40m Admiral Bridge	13
34 SAGE 40m Admiral Galley	13
35 SAGE 40m Admiral Galley	13
36 SAGE 40m Admiral Pantry	13
38 SAGE 40m Admiral Captain's Quarter	13
37 SAGE 40m Admiral Crew Mess	13
39 SAGE 40m Admiral Crew Hallway	14
40 SAGE 40m Admiral Bow	14
42 SAGE 40m Admiral Bow	14
44 SAGE 40m Admiral Tender Garage	14
45 SAGE 40m Admiral Tender Garage	14
46 SAGE 40m Admiral Engineer Office	14

47 SAGE 40m Admiral Engine Room	15
48 SAGE 40m Admiral Engine Room	15
50 SAGE 40m Admiral Running Port	15
51 SAGE 40m Admiral Running Bow	15
20210528_DSCF7077@mesi_HD	15
53 SAGE 40m Admiral Aerial	15
DSC07653	16
54 SAGE 40m Admiral Running Starboard Bow	16
DSC07661	16
DSC07820 copy	16
DSC07852 copy	16
DSC07880 copy	16
DSC07953	17
Sage model main salon	17
DSC07991	17
DSCkj07857 copy	17
Sage HR Aerial (23 of 27)	17
Screen Shot 2019-10-08 at 1.11.02 PM	17
Sage HR Aerial (24 of 27)	18
Sage HR Aerial (25 of 27)	18
Sage HR Aerial (26 of 27)	18
Sage HR Aerial (27 of 27)	18
CONTACTS	19
Contact details	19
Telephones	19
Office hours	19
Address	19

---

# SPECIFICATIONS

---

## Overview

---

39.7m Admiral SAGE was delivered in 2017 in Italy. Built by the Italian Sea Group, she comfortably accommodates 12 guests in five staterooms. Sharp-cornered contours and a minimalistic and sophisticated interior design by Gian Marco Campanino make SAGE the perfect gentleman's yacht.

Double automatic electric doors take you into the main saloon which features large glass panelled windows offering ample natural light and panoramic views. Dividing the main saloon from the formal dining area is a console for tableware with a rise and fall television screen. The formal dining table seats 10 guests, with sliding glass doors positioned either side allowing guests to enjoy beautiful views as well as a comforting breeze. A large aft deck area offers additional comfortable seating.

All five staterooms feature en-suites. The full-beam Owner's suite is found on the main deck and two doubles and two twins with Pullman berths on the lower deck.

The sundeck is particularly spacious with dining space for up to 10 guests as well as space to relax on modern outdoor seating. All the way aft are large sunpads with optional sun awnings.

A generous beach club allows easy access to the water and a tender garage with ample storage.

SAGE is found in turn-key condition after two years of private use. She boasts a top speed of 19.5 knots and a cruising speed of 13.5 knots.

---

## Basic Information

---

**Category:** Motor Yacht

**Model Year:** 2017

**Year Built:** 2017

**Country:** France

---

## Dimensions

---

**LOA:** 130' 3" (39.7mm)

**LWL:** 123' 9" (37.7mm)

**Beam:** 26.24

**Max Draft:** 6' 3" (1.9mm)

---

## Speed, Capacities and Weight

---

**Cruise Speed:** 13.5 Knots Kts. (16 MPH)

**Cruise Speed Range:** 2074

**Max Speed:** 19.5 Knots Kts. (22 MPH)

**Gross Tonnage:** 299 Pounds

**Water Capacity:** 8000 Gallons

**Holding Tank:** 1320.86 Gal Gallons

**Fuel Consumption:** 8717.68 Gal Gallons

---

## Accommodations

---

**Total Cabins:** 5

**Sleeps:** 12

**Total Heads:** 7

**Crew Cabin:** 7

**Crew Berths:** 7

**Crew Heads:** 4

---

## Hull and Deck Information

---

**Hull Material:** Aluminum

**Hull Color:** Ethereal Blue

**Interior Designer:** Gian Marco Campanino

---

## Engine Information

---

**Engines:** 2

**Manufacturer:** CAT

**Engine Type:** Inboard

**Fuel Type:** Diesel

# PHOTOS

**Sage model bow**



**41 SAGE 40m Admiral Bow**



**49 SAGE 40m Admiral Running Port Detail**



**52 SAGE 40m Admiral Running Bow**



**43 SAGE 40m Admiral Beach Club**



**27 SAGE 40m Admiral Exterior Dining**



### 30 SAGE 40m Admiral Sundeck



### 29 SAGE 40m Admiral Sundeck



### 24 SAGE 40m Admiral Sundeck



### 05 SAGE 40m Admiral Main Salon

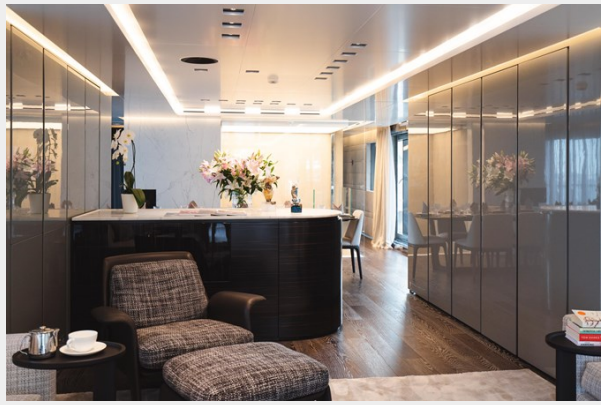


### 06 SAGE 40m Admiral Main Salon





**07 SAGE 40m Admiral Main Salon**



**08 SAGE 40m Admiral Dining Area**



**09 SAGE 40m Admiral Dining Area**



**10 SAGE 40m Admiral Master Stateroom**



**11 SAGE 40m Admiral Master Stateroom**



**12 SAGE 40m Admiral Master Stateroom**



**13 SAGE 40m Admiral Master En Suite 14 SAGE 40m Admiral Master En Suite**



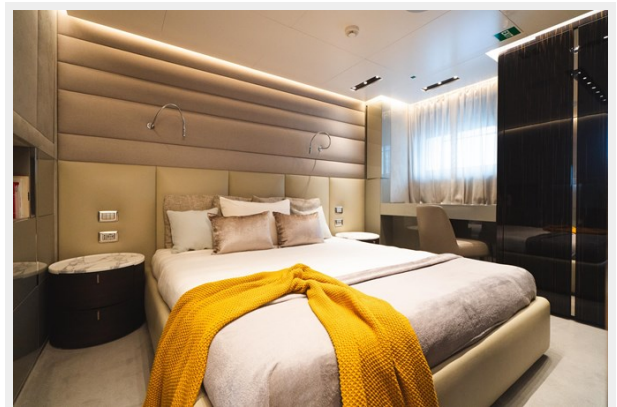
**15 SAGE 40m Admiral Second Master 16 SAGE 40m Admiral Second Master**



**17 SAGE 40m Admiral Second Master En Suite**



**18 SAGE 40m Admiral VIP**



**19 SAGE 40m Admiral Twin Stateroom 20 SAGE 40m Admiral Twin Stateroom**



**21 SAGE 40m Admiral Aft Deck 2**



**21 SAGE 40m Admiral Aft Deck**



**21 SAGE 40m Admiral Sundeck**



**22 SAGE 40m Admiral Sundeck**



**23 SAGE 40m Admiral Sundeck**



**25 SAGE 40m Admiral Sundeck**



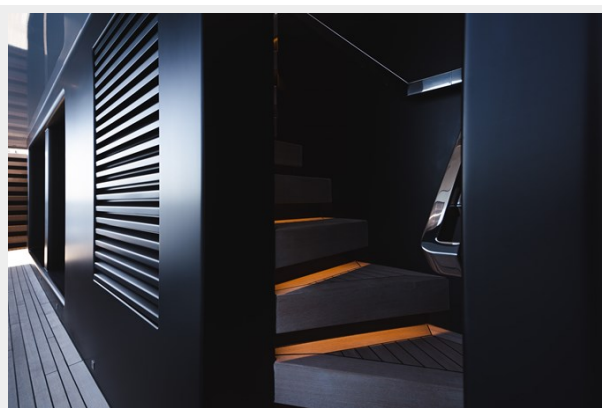
**26 SAGE 40m Admiral Exterior Dining Table**



**28 SAGE 40m Sundeck**



**31 SAGE 40m Admiral Stairs**



**32 SAGE 40m Admiral Bridge**



**33 SAGE 40m Admiral Bridge**



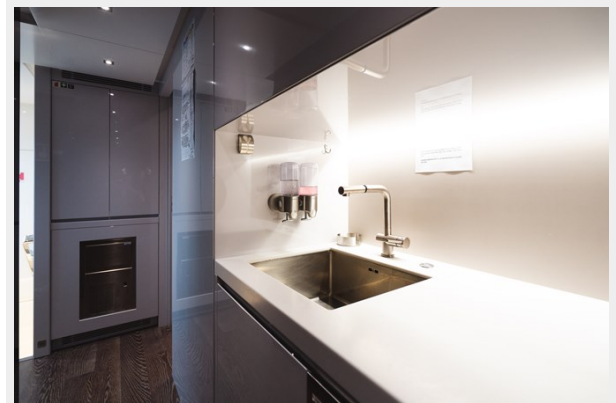
**34 SAGE 40m Admiral Galley**



**35 SAGE 40m Admiral Galley**



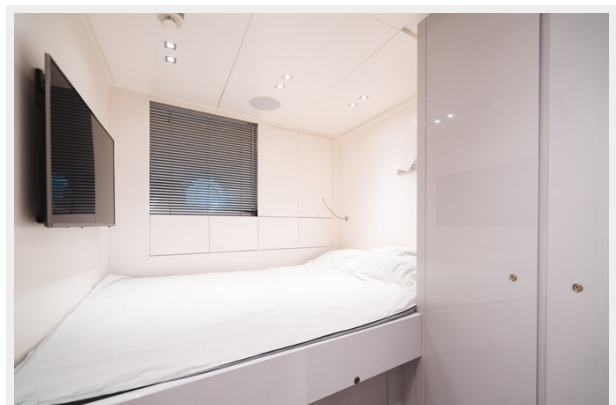
**36 SAGE 40m Admiral Pantry**



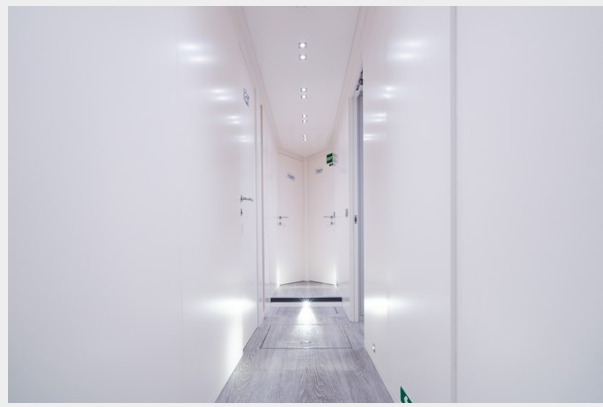
**37 SAGE 40m Admiral Crew Mess**



**38 SAGE 40m Admiral Captain's Quarter**



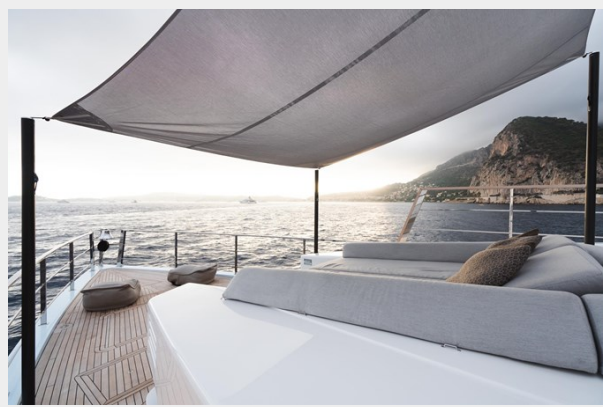
**39 SAGE 40m Admiral Crew Hallway**



**40 SAGE 40m Admiral Bow**



**42 SAGE 40m Admiral Bow**



**44 SAGE 40m Admiral Tender Garage**



**45 SAGE 40m Admiral Tender Garage 46 SAGE 40m Admiral Engineer Office**



**47 SAGE 40m Admiral Engine Room**



**48 SAGE 40m Admiral Engine Room**



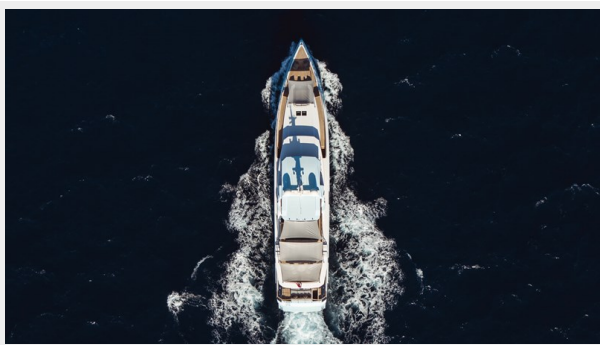
**50 SAGE 40m Admiral Running Port**



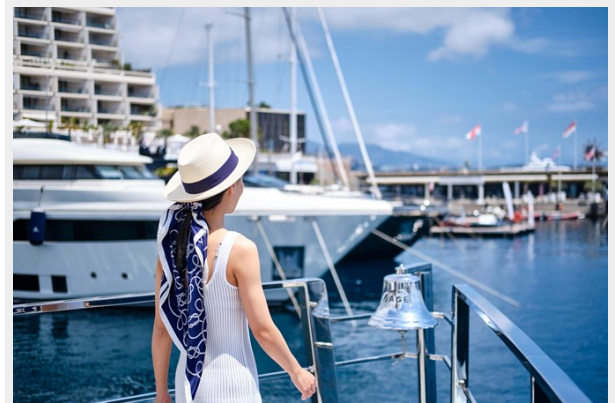
**51 SAGE 40m Admiral Running Bow**



**53 SAGE 40m Admiral Aerial**



**20210528\_DSCF7077@mesi\_HD**



**54 SAGE 40m Admiral Running  
Starboard Bow**



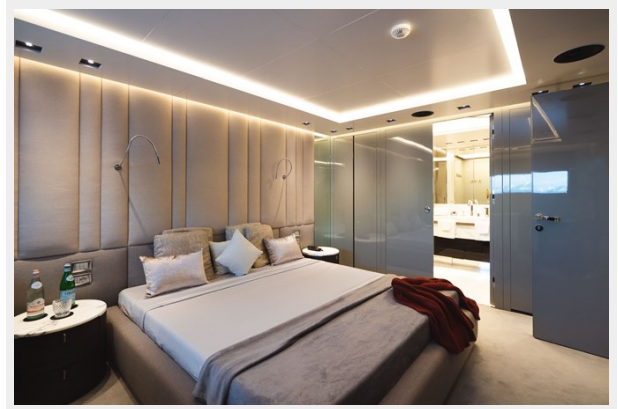
**DSC07653**



**DSC07661**



**DSC07820 copy**



**DSC07852 copy**



**DSC07880 copy**





**DSC07953**



**Sage model main salon**



**DSC07991**



**DSCkj07857 copy**



**Screen Shot 2019-10-08 at 1.11.02 PM**



**Sage HR Aerial (23 of 27)**



**Sage HR Aerial (24 of 27)**



**Sage HR Aerial (25 of 27)**



**Sage HR Aerial (26 of 27)**



**Sage HR Aerial (27 of 27)**



# CONTACTS

---

Andrey Shestakov, leading yacht broker of the sales department of Shestakov Yacht Sales Inc. Shestakov Yacht Sales Inc., the official representative of the Miami/Fort Lauderdale FL headquarters.

## Contact details

---

Email: **andrey@shestakovyachtsales.com**

Web: [shestakovyachtsales.com/en/](https://shestakovyachtsales.com/en/)

## Telephones

---

USA: **+1(954)274-4435**

## Office hours

---

Monday – Saturday: **9:00 - 21:00** EDT

Sunday: **closed**

## Address

---



Harbour Towne Marina, 850 NE 3rd St, STE 213, Dania, FL 33004