

PALGREMAT — CUSTOM LINE



Builder: CUSTOM LINE

Year Built: 2017

Model: Motor Yacht

Price: **PRICE ON APPLICATION**

LOA: 92' 11" (28.31mm)

Beam: 22.96

Min Draft: 7' 3" (2.2mm)

Cruise Speed: 13 Knots Kts. (15 MPH)

Max Speed: 16 Knots Kts. (18 MPH)

Our experienced yacht broker, Andrey Shestakov, will help you choose and buy a yacht that best suits your needs **Palgremat — CUSTOM LINE** from **our catalogue**. Presently, at **Shestakov Yacht Sales Inc.**, we have a wide variety of yachts available on **our sale's list**. We also work in close contact with all the big **yacht manufacturers** from all over the world.

If you would like to buy a yacht **Palgremat — CUSTOM LINE** or would like help answering any questions concerning purchasing, selling or chartering a yacht, please call **+1(954)274-4435**

TABLE OF CONTENTS

TABLE OF CONTENTS	2
SPECIFICATIONS	3
Overview	3
Basic Information	3
Dimensions	3
Speed, Capacities and Weight	3
Accommodations	4
Hull and Deck Information	4
Engine Information	4
PHOTOS	5
Jacuzzi on the sundeck	8
main deck saloon	8
main deck saloon	9
main deck saloon 5	9
main deck saloon	9
Owner's cabin	9
tv	9
View from owner's cabin	9
Owner's head	10
Upper deck saloon	10
TV and wine cooler on the upperdeck saloon	11
Galley	13
CONTACTS	14
Contact details	14
Telephones	14
Office hours	14
Address	14

SPECIFICATIONS

Overview

The 28-metre Navetta M/Y PALGREMAT built by Custom Line was delivered to her owner in 2018. PALGREMAT has only ever been privately used and professionally maintained by her crew. The chic and contemporary interiors can accommodate up to 10 guests in five staterooms, all with en-suite bathroom facilities. The main and upper deck saloon features full-height windows providing panoramic vistas and plenty of natural light. The impressive deck areas include a sundeck boasting a Jacuzzi and sun pads. The versatile aft deck features a large swimming platform that can also be used as a pier for the tender or the water toys. PALGREMAT represents an excellent opportunity for anyone looking for a tri-deck yacht, recently built, with low fuel consumption, well maintained and fully equipped.

Basic Information

Category: Motor Yacht

Model Year: 2018

Year Built: 2017

Dimensions

LOA: 92' 11" (28.31mm)

Beam: 22.96

Min Draft: 7' 3" (2.2mm)

Speed, Capacities and Weight

Cruise Speed: 13 Knots Kts. (15 MPH) **Cruise Speed Range:** 1200

Max Speed: 16 Knots Kts. (18 MPH) **Water Capacity:** 2000 Gallons

Holding Tank: 264.17 Gal Gallons **Fuel Capacity:** 3302.15 Gal Gallons

Fuel Consumption: 23.78 Gal Gallons

Accommodations

Total Cabins: 5

Sleeps: 10

Total Heads: 6

Crew Berths: 5

Crew Heads: 3

Hull and Deck Information

Hull Material: GRP

Deck Material: Teak

Exterior Designer: Zuccon
International Project

Interior Designer: Zuccon
International Project

Engine Information

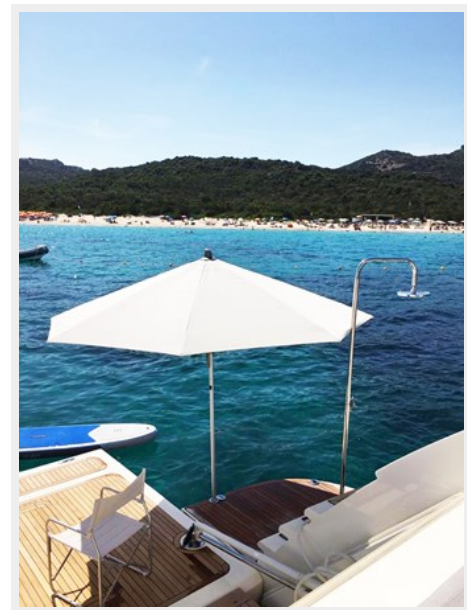
Engines: 2

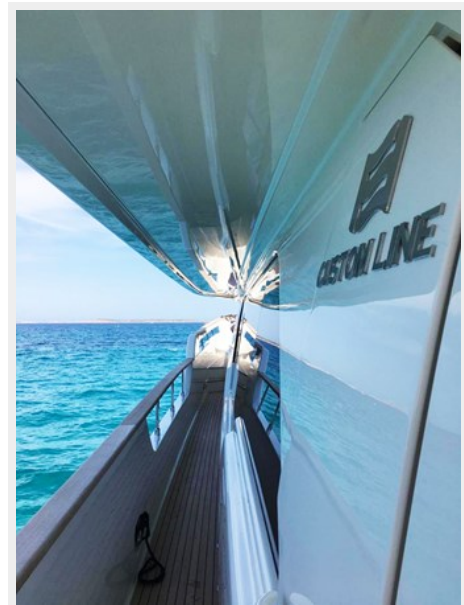
Manufacturer: MAN

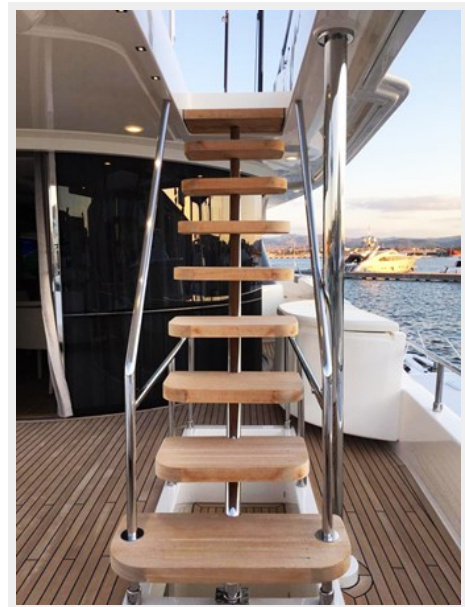
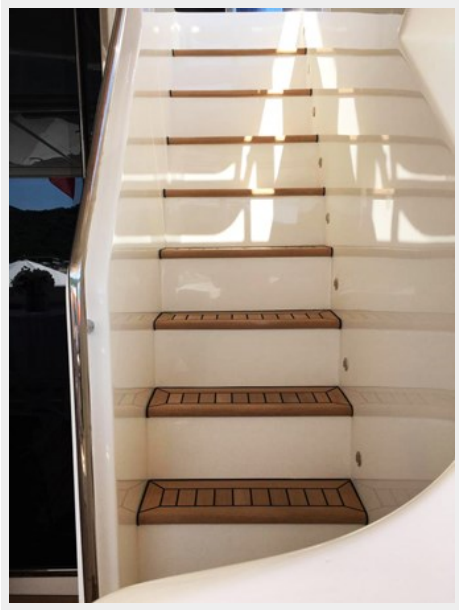
Engine Type: Inboard

Fuel Type: Diesel

PHOTOS







Jacuzzi on the sundeck



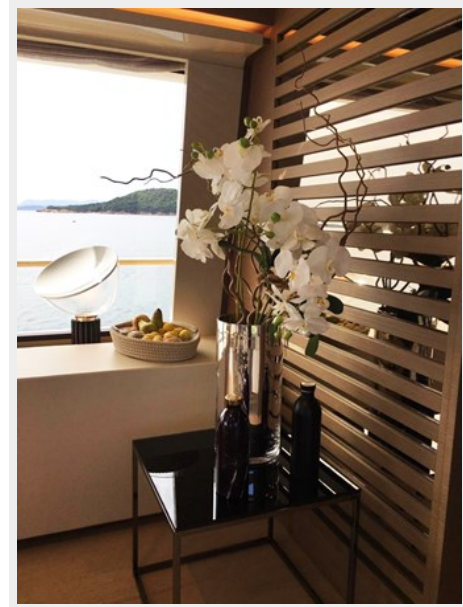
main deck saloon



main deck saloon 5



main deck saloon



main deck saloon



Owner's cabin



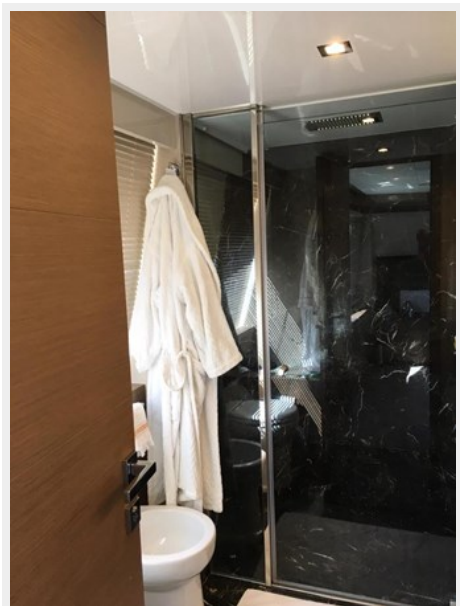
tv



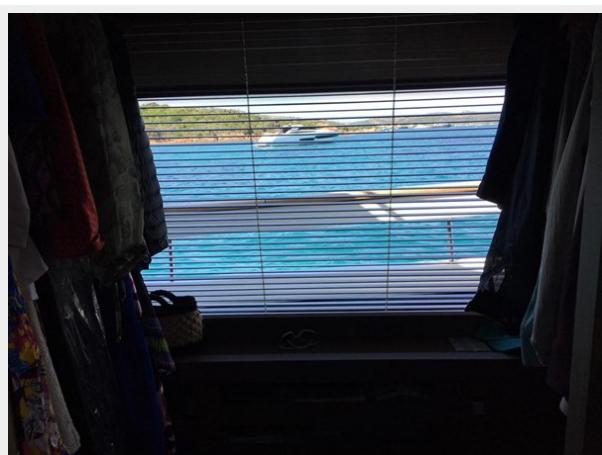
View from owner's cabin



Owner's head

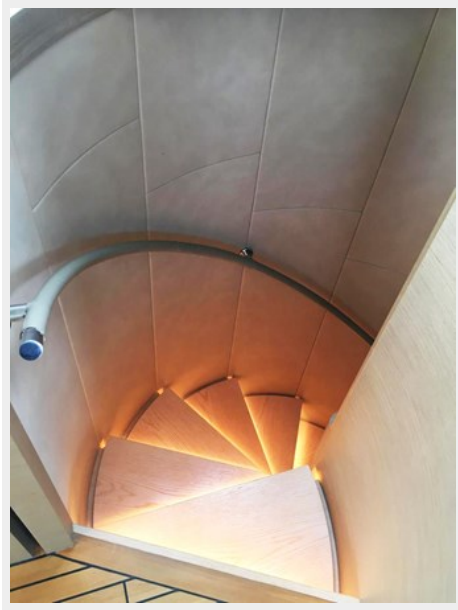


Upper deck saloon



TV and wine cooler on the upperdeck saloon







Galley



CONTACTS

Andrey Shestakov, leading yacht broker of the sales department of Shestakov Yacht Sales Inc. Shestakov Yacht Sales Inc., the official representative of the Miami/Fort Lauderdale FL headquarters.

Contact details

Email: **andrey@shestakovyachtsales.com**

Web: shestakovyachtsales.com/en/

Telephones

USA: **+1(954)274-4435**

Office hours

Monday – Saturday: **9:00 - 21:00** EDT

Sunday: **closed**

Address



Harbour Towne Marina, 850 NE 3rd St, STE 213, Dania, FL 33004