

## MSV — BALK SHIPYARD



**Builder:** BALK SHIPYARD

**Year Built:** 2013

**Model:** Motorsailer

**Price:** PRICE ON APPLICATION

**Location:** France

**LOA:** 211' 9" (64.52mm)

**Beam:** 34.44

**Min Draft:** 15' 6" (4.7mm)

**Max Draft:** 15' 6" (4.7mm)

**Cruise Speed:** 12 Knots Kts. (14 MPH)

**Max Speed:** 14 Knots Kts. (16 MPH)

Our experienced yacht broker, Andrey Shestakov, will help you choose and buy a yacht that best suits your needs **MSV — BALK SHIPYARD** from our catalogue. Presently, at Shestakov Yacht Sales Inc., we have a wide variety of yachts available on our sale's list. We also work in close contact with all the big yacht manufacturers from all over the world.

If you would like to buy a yacht **MSV — BALK SHIPYARD** or would like help answering any questions concerning purchasing, selling or chartering a yacht, please call **+1(954)274-4435**

# TABLE OF CONTENTS

TABLE OF CONTENTS	2
SPECIFICATIONS	5
Overview	5
Basic Information	6
Dimensions	6
Speed, Capacities and Weight	6
Accommodations	7
Hull and Deck Information	7
Engine Information	7
PHOTOS	8
Grand Saloon Fwd STBD	8
Grand Saloon	8
Dinning	8
Grand Saloon Aft STBD	8
Down to Cabin Level	8
Master	8
Master	9
Owner's with Tub	9
Massage Room - Owner's Suite	9
Owner's with Shower	9
Sauna - Owner's Suite	9
Owner's Saloon - Owner's Suite Deck Level	9
Owner's Saloon - Owner's Suite Deck Level	10
Owners's Table and Seating	10
Compaionway forward	10
Compaionway aft	10
MISTRAL - STBD Fwd	10
MISTRAL - STBD Fwd	10

PONENTE - Port FWD	11
PONENTE - Port FWD	11
SIROCCO - Port Aft	11
SIROCCO - Port Aft	11
LEVANTE - STBD Aft	11
LEVANTE - STBD Aft	11
Galley	12
Galley	12
Double Wine Chiller	12
Pantry	12
Down to wine cellar and provisions	13
Refrigeration, Freezers and dry stores	13
Large Seating and Tables	13
Large seating and serving stations	13
STBD deck	13
Boarding Med style stairs	14
Tender 2	14
Port Side Deck and Seating	14
Tender 2	14
Starboard Boarding	15
Aft deck and mats	15
Aft Helm	15
Twilight and Safe Harbor	15
Anchored	15
Toys	15
Island of Safety and Happiness.	16
Sailing off into the Sunset	16
CONTACTS	17
Contact details	17

---

Telephones	17
Office hours	17
Address	17

---

# SPECIFICATIONS

---

## Overview

---

**Refit 2020/2021 & 2022 including total varnish.**

Style, Class and a Roaring 20's Mystique sets **MSV** in a category of her own. Consider her uniqueness, then understand she was commissioned in 2013 by a Dutch yard well-known for excellence since 1798, **Balk Shipyards**, Netherlands.

Designed by the world acclaimed naval architects, **Dykstra**. Same design team for **S/Y MALTESE FALCON**, the largest sailboat in the world until Dykstra's more recent design, **S/Y BLACK PEARL** at 107meters. Dykstra other designs include: **KAMAXITHA**, **RAINBOW**, **HETAIROS**, **BORKUMRIFF IV** and **METEOR** to list just a few. **MSV** is proud to be part of this heritage. **She is the 14<sup>th</sup> largest sailing yacht** in the world.

**Private Owner's Suite:** Located on two deck levels. You'll find an elegant Master suite w/2 full EnSite facilities, Massage Room, Sauna and Dressing Room. Up the private stairway to the rich opulence of the large Owner's Private Saloon, followed by large private alfresco table and seating.

**5 Staterooms** sleeping 10 or 12 w/Pullmans. 6 Crew cabins, sleeping 10 or 12.

**Ship's Systems** are all top tier quality and installed by Dutch craftsman. She has been lightly used and always well maintained.

**Power:** Twin MTU 8V2000m72 engines w/1285 hrs. stbd & 1286 hrs. port providing a range of over 2900NM.

**Generators:** Twin Northern Lights 90KW

**Sails** include over 1500m<sup>2</sup> of Doyle Vectran Techpanel sails all handled by Bamar furlers and Rondal Sail Control System. The booms are custom built carbon fiber.

**Side Boarding** via Cramm Ocean Bay hydraulic Med style stairs and landing.

**Stern boarding** with Multiplex passarelle.

## Basic Information

---

**Category:** Motorsailor

**Model Year:** 2013

**Year Built:** 2013

**Country:** France

## Dimensions

---

**LOA:** 211' 9" (64.52mm)

**LWL:** 129' 9" (39.54mm)

**Beam:** 34.44

**Min Draft:** 15' 6" (4.7mm)

**Max Draft:** 15' 6" (4.7mm)

## Speed, Capacities and Weight

---

**Cruise Speed:** 12 Knots Kts. (14 MPH)

**Cruise Speed Range:** 2950

**Max Speed:** 14 Knots Kts. (16 MPH)

**Gross Tonnage:** 490 Pounds

**Water Capacity:** 8400 Gallons

**Holding Tank:** 1822.79 Gal Gallons

**Fuel Capacity:** 8361.05 Gal Gallons

---

## Accommodations

---

**Total Cabins:** 5

**Total Berths:** 9

**Sleeps:** 12

**Total Heads:** 7

**Crew Cabin:** 12

**Crew Berths:** 10

**Crew Heads:** 6

---

## Hull and Deck Information

---

**Hull Material:** Cold Molded Mahogany

**Deck Material:** Teak

**Hull Configuration:** Long Keel

**Hull Color:** White

**Hull Designer:** Dykstra Naval Architects

**Exterior Designer:** Ken Freivokh Design

**Interior Designer:** Ken Freivokh Design

---

## Engine Information

---

**Engines:** 2

**Manufacturer:** MTU

**Engine Type:** Inboard

**Fuel Type:** Diesel

# PHOTOS

**Grand Saloon**



**Grand Saloon Fwd STBD**



**Dinning**



**Grand Saloon Aft STBD**



**Down to Cabin Level**



**Master**





**Master**



**Owner's with Tub**



**Massage Room - Owner's Suite**



**Owner's with Shower**



**Sauna - Owner's Suite**



**Owner's Saloon - Owner's Suite Deck Level**



### Owner's Saloon - Owner's Suite Deck Level



### Owners's Table and Seating



### Companionway forward



### Companionway aft



### MISTRAL - STBD Fwd



### MISTRAL - STBD Fwd



**PONENTE - Port FWD**



**PONENTE - Port FWD**



**SIROCCO - Port Aft**



**SIROCCO - Port Aft**



**LEVANTE - STBD Aft**



**LEVANTE - STBD Aft**



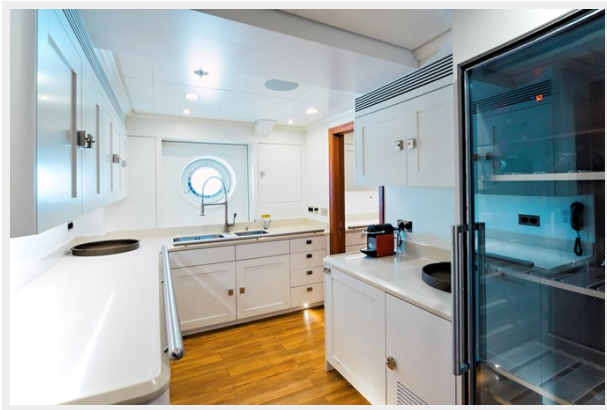
**Galley**



**Galley**



**Pantry**

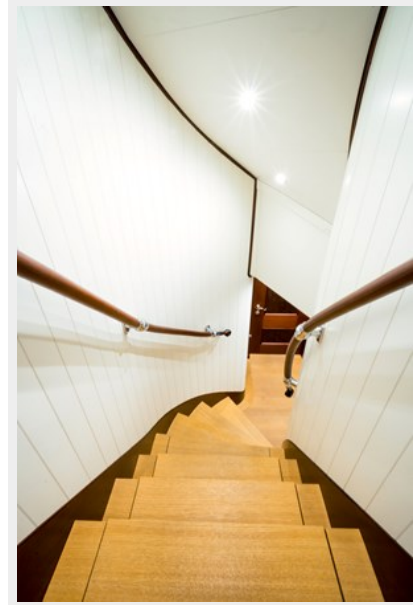


**Double Wine Chiller**



## Down to wine cellar and provisions

### Refrigeration, Freezers and dry stores



### Large Seating and Tables



### Large seating and serving stations



### STBD deck



**Boarding Med style stairs**



**Tender 2**



**Port Side Deck and Seating**

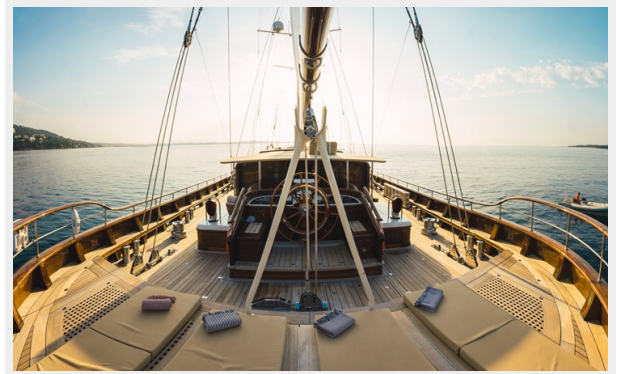
**Tender 2**



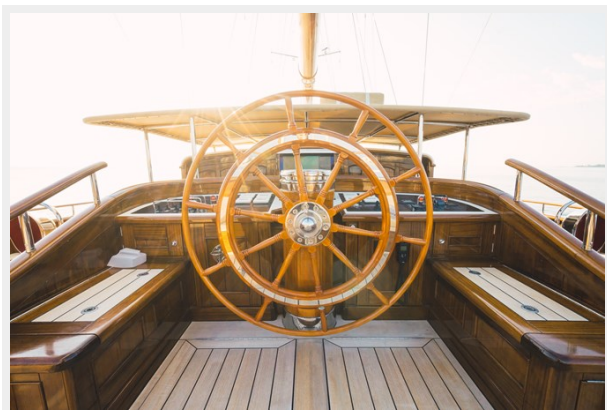
### Starboard Boarding



### Aft deck and mats



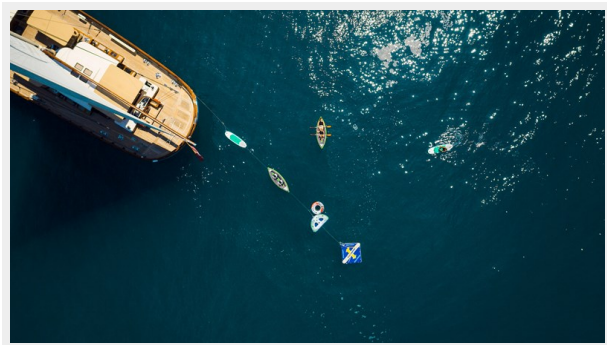
### Aft Helm



### Twilight and Safe Harbor



### Toys



### Anchored



## Island of Safety and Happiness.



## Sailing off into the Sunset





# CONTACTS

---

Andrey Shestakov, leading yacht broker of the sales department of Shestakov Yacht Sales Inc. Shestakov Yacht Sales Inc., the official representative of the Miami/Fort Lauderdale FL headquarters.

## Contact details

---

Email: [andrey@shestakovyachtsales.com](mailto:andrey@shestakovyachtsales.com)

Web: [shestakovyachtsales.com/en/](http://shestakovyachtsales.com/en/)

## Telephones

---

USA: +1(954)274-4435

## Office hours

---

Monday – Saturday: **9:00 - 21:00** EDT

Sunday: **closed**

## Address

---



Harbour Towne Marina, 850 NE 3rd St,  
STE 213, Dania, FL 33004