

FP MY 37 IN FLORIDA — FOUNTAINE PAJOT



Builder: FOUNTAINE PAJOT

Year Built: 2016

Model: Cruiser

Price: PRICE ON APPLICATION

Location: United States

LOA: 37' (11.28m)

Beam: 16.58

Min Draft: 2' 6" (0.76m)

Max Draft: 2' 6" (0.76m)

Cruise Speed: 17 Knots Kts. (20 MPH)

Max Speed: 23 Knots Kts. (26 MPH)

Our experienced yacht broker, Andrey Shestakov, will help you choose and buy a yacht that best suits your needs FP MY 37 in Florida — FOUNTAINE PAJOT from our catalogue. Presently, at Shestakov Yacht Sales Inc., we have a wide variety of yachts available on our sale's list. We also work in close contact with all the big yacht manufacturers from all over the world.

If you would like to buy a yacht FP MY 37 in Florida — FOUNTAINE PAJOT or would like help answering any questions concerning purchasing, selling or chartering a yacht, please call +1(954)274-4435

TABLE OF CONTENTS

| | |
|------------------------------|----|
| TABLE OF CONTENTS | 2 |
| SPECIFICATIONS | 3 |
| Overview | 3 |
| Basic Information | 5 |
| Dimensions | 6 |
| Speed, Capacities and Weight | 6 |
| Accommodations | 6 |
| Hull and Deck Information | 6 |
| Engine Information | 6 |
| PHOTOS | 7 |
| IMG_7195 | 10 |
| IMG_0464 | 11 |
| IMG_0511 | 11 |
| IMG_0531 | 11 |
| SWEET CAROLINE HEAD | 11 |
| SWEET CAROLINE MASTER | 11 |
| SWEET CAROLINE MASTER1 | 11 |
| SWEET CAROLINE STERN | 12 |
| sweet-caroline-floor-plan | 12 |
| CONTACTS | 13 |
| Contact details | 13 |
| Telephones | 13 |
| Office hours | 13 |
| Address | 13 |

SPECIFICATIONS

Overview

Fountaine Pajot new model in its Motor Yachts range. Drawing on the success of its three other motor yachts, the Summerland MY 40 LC, the CUMBERLAND MY 47 LC and the QUEENSLAND MY 55, the French shipyard is launching a new entry-level model : the FOUNTAINE PAJOT MY 37.

The shipyard aims to bring a coherent and innovative range to increasingly demanding international clients who appreciate the exceptional quality and characteristics of Fountaine Pajot Motor Yachts designs.

Engines:

- **2 diesel Upgraded engines VOLVO D3 220 CV 220 HP**
- **2 Upgraded NEW 2020 ZF68 Transmissions!**
- Direct shaft Lines
- 2 four blade propellers
- Engine cooling by sea water exchanger
- Engine compartment ventilation by airflow + mechanical air extraction
- Switchboards and electrical controls on the helm station at flying bridge

Electrical:

Generator: Yes

12V power circuit

- 1 starboard Battery Park service and start engine 345A / h AGM
- 1 battery port engine 100A / h AGM
- Recharging each park batteries by alternator
- Up manual connection between the two banks of batteries
- Remote battery switches on the electrical panel control
- General protection of power circuits by circuit breakers

12V Distribution

- Decentralized distribution functions with 12V switches in the cockpit and saloon entrance
- Voltmeter Battery Park Service
- Switches to the interior cockpit for pumps and navigation lights
- Free plugs for extra equipment

FlyBridge:

- Area : 12 m²
- Access by stairs
- 1 bench seating for 6 people
- 1 helmsman seat with backrest covers silvertex
- Wide instrument console
- Protective cover of the instrument console
- Protection of the fly bridge by windshield altuglass
- 1 compass
- Navigation lights
- Mooring light spar mounted and white beam headlight
- 1 bracket flag

Galley:

- Galley with working top
- 1 bin with vertical access
- 1 bowl sinks with drainer
- Hot and cold pressurized water, mixer tap
- 1 stainless steel hob, 3 strong power gas burners
- 1 stainless steel gas oven
- 7 ° - 150L cold storage volume 12V
- Cupboard + shelves + drawers
- Ventilation via 1 porthole above cooking hob
- LED light spots

Cockpit:

- Area : 13.5m²
- 3-seater bench with backrest and storage compartment
- Stairs to the flying bridge
- Large storage compartment under floor
- Access to back beaches
- Lighting waterproof spots

Dining area

- 1 bench seating for 6 people
- 1 table for 6 people
- Standard upholstery according to "Millésime"
- Lighting LED spots
- Ventilation by 1 bay window

Sofa space

- Front sofa 2 places
- Covers cushions silvertex color "taupe"

- LED lighting zone
- Ventilation by a bay window

Aft cabins

- Access through wooden door from the passageway (doors with locks)
- Double bed 1, 60 x 2, 00 approx.
- Hanging
- Storage under bed
- Wide fixed hull bay
- Ventilation via hull portholes
- General lighting LED spotlights and 2 bedside reading lights
- Blackout curtains for all windows and deck hatches

Bathroom area (common to 2 cabins)

- Common access via the passageway through wooden door
- Worktop with integrated sink and mirror
- Shower with hot and cold water mixer
- W.C. great model manual
- Bathroom accessories (toilet paper holder + towel)
- Ventilation by 1 deck hatch
- Lighting waterproof LED spots

Forward cabins

- Access through wooden door from the passageway
- 1 double bed (1, 40 / 1, 00 x 2, 00 m)
- Hanging
- Storage under the bed
- Wide fixed hull bay
- Ventilation via portholes lined
- General lighting LED spotlights and 2 bedside reading lights
- Ventilation by deck
- Blackout curtains for windows and deck hatch

Basic Information

Category: Cruiser

Sub Category: Cruiser

Model Year: 2016

Year Built: 2016

Country: United States

Dimensions

LOA: 37' (11.28mm)**Beam:** 16.58**Min Draft:** 2' 6" (0.76mm)**Max Draft:** 2' 6" (0.76mm)

Speed, Capacities and Weight

Cruise Speed: 17 Knots Kts. (20 MPH)**Cruise Speed Range:** 1000**Max Speed:** 23 Knots Kts. (26 MPH)**Max Speed Range:** 10 Kts.**Water Capacity:** 350 Gallons**Holding Tank:** 60 Gal Gallons**Fuel Capacity:** 600 Gal Gallons

Accommodations

Total Cabins: 3

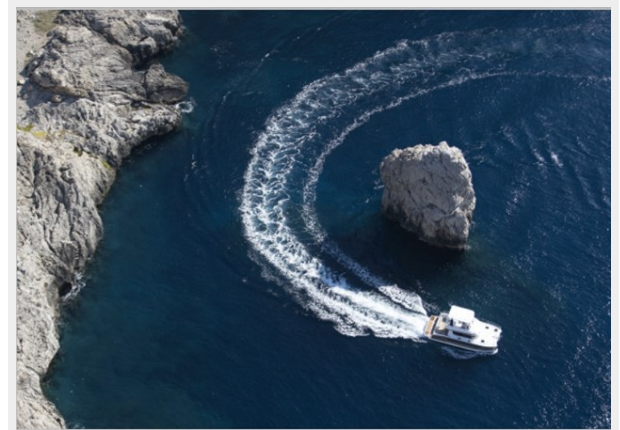
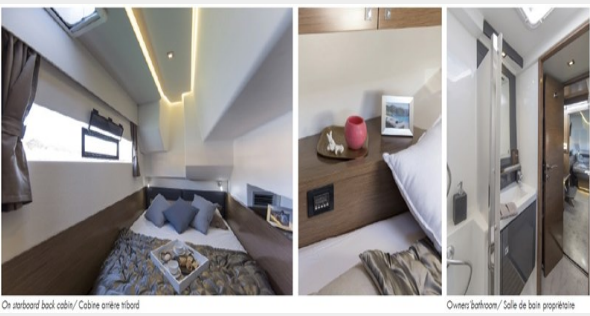
Hull and Deck Information

Hull Material: Fiberglass**Hull Configuration:** Catamaran

Engine Information

Engines: 2**Manufacturer:** Volvo Penta**Engine Type:** Inboard**Fuel Type:** Diesel

PHOTOS





| VOLVO 150 CV / 110 KW | | | | VOLVO 220 CV / 164 KW | | | |
|---------------------------------------|------------------|-----------------------------|-------------------------|---------------------------------------|------------------|-----------------------------|-------------------------|
| | Vitesse Speed | Consommation Consumption | Autonomie Fuel range | | Vitesse Speed | Consommation Consumption | Autonomie Fuel range |
| Croisière éco Eco cruise speed | 7 KT | 2 x 4,7 l/h | 1000 miles | Croisière éco Eco cruise speed | 7 KT | 2 x 4,7 l/h | 1000 miles |
| Croisière rapide Fast cruise speed | 12,5 KT | 2 x 18 l/h | 460 miles | Croisière rapide Fast cruise speed | 13,5 KT | 2 x 22 l/h | 400 miles |
| Plein régime Full throttle | 17 KT | 2 x 28,5 l/h | 400 miles | Plein régime Full throttle | 20 KT | 2 x 48 l/h | 275 miles |



FOUNTAINE PAJOT MY 37

FOUNTAINE PAJOT MOTOR YACHTS propose une gamme complète de Yachts à moteur, doublement spacieux, doublement confortables, doublement économes.

FOUNTAINE PAJOT MOTOR YACHTS proposes a complete range of motor yachts, twice the space, twice the comfort, twice the efficiency.

Longueur hors tout / Length over all : 11 m / 36.1 ft
 Largeur hors tout / Beam over all : 5,1 m / 16.7 ft

Poids lége / Displacement unloaded : 8,9 T
 Tirant d'eau / Draft : 0,8 m / 2.6 ft

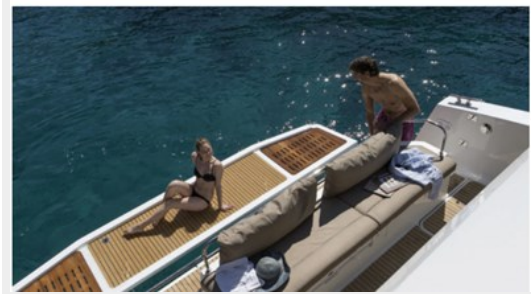
Motorisation standard / Standard power : VOLVO 2 x 150 CV / 2 x 110 KW
 Motorisation option / Option power : VOLVO 2 x 220 CV / 2 x 164 KW

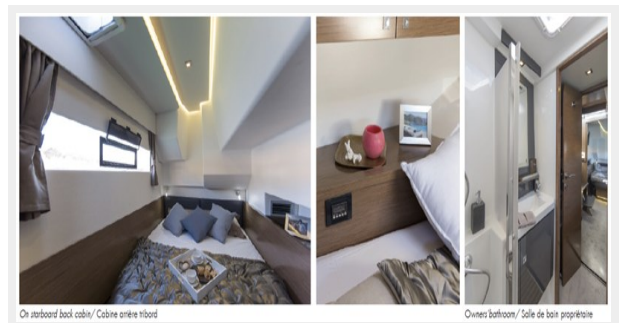
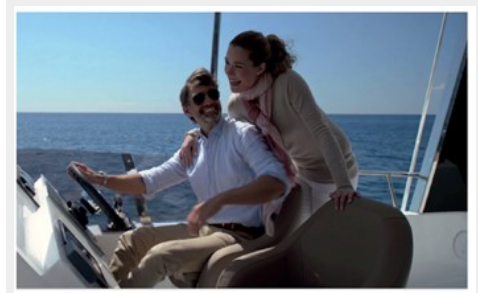
Capacité des réservoirs / Tank capacity
 Eau douce / Fresh water : 350 l (approx.) / 1 x 93 US gallons (approx.)
 Gasoil / Fuel : 2 x 600 l (approx.) / 2 x 158 US gallons (approx.)
 Autonomie / Autonomy : 1000 mn

Versions :
 Maestro / Owner : 1 suite propriétaire + 1 cab. privée / 2 cabines doubles + 1 sbd
 Quatuor / Quatuor : 1 owner's suite + 1 bathroom / 2 double cabins + 1 bathroom
 Quatuor / Quatuor : 4 cabines doubles + 2 salles de bain
 Quatuor / Quatuor : 4 double cabins + 2 bathrooms

Architecte / Architect : Daniel Andrieu
 Ambiance d'intérieur / Interior : David Comy / David Boudgourd

Fontaine Pajot
 MOTOR YACHTS





De starboard back cabin / Cabine arrière tribord

Owner's bathroom / Salle de bain propriétaire



IMG_7195



IMG_0464



IMG_0511



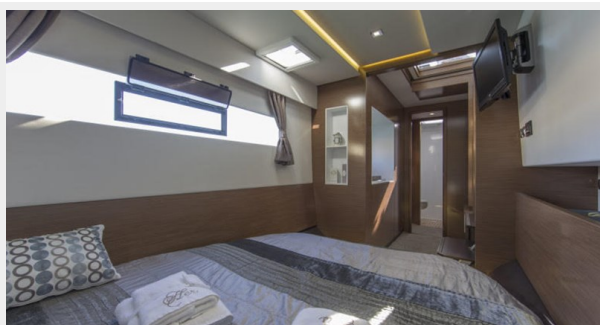
IMG_0531



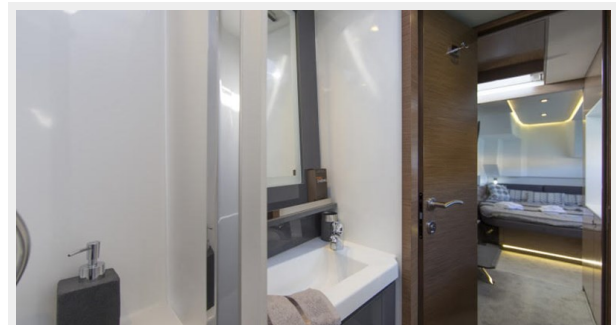
SWEET CAROLINE HEAD



SWEET CAROLINE MASTER



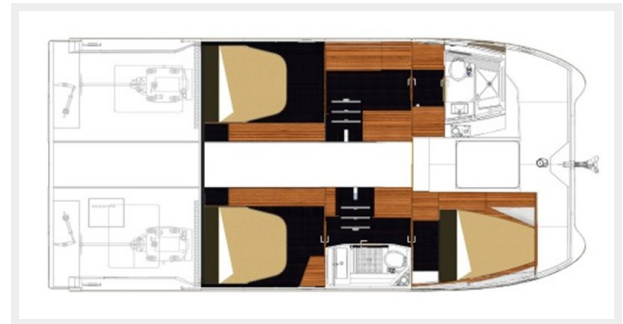
SWEET CAROLINE MASTER1



SWEET CAROLINE STERN



sweet-caroline-floor-plan



CONTACTS

Andrey Shestakov, leading yacht broker of the sales department of Shestakov Yacht Sales Inc. Shestakov Yacht Sales Inc., the official representative of the Miami/Fort Lauderdale FL headquarters.

Contact details

Email: andrey@shestakovyachtsales.com

Web: shestakovyachtsales.com/en/

Telephones

USA: +1(954)274-4435

Office hours

Monday – Saturday: **9:00 - 21:00** EDT

Sunday: **closed**

Address



Harbour Towne Marina, 850 NE 3rd St,
STE 213, Dania, FL 33004