

## AMELIA — CUSTOM LINE



**Builder:** CUSTOM LINE

**Year Built:** 2018

**Model:** Motor Yacht

**Price:** PRICE ON APPLICATION

**Location:** Turkey

**LOA:** 125' 11" (38.36mm)

**Beam:** 25.09

**Max Draft:** 7' (2.13mm)

**Cruise Speed:** 21 Knots Kts. (24 MPH)

**Max Speed:** 25 Knots Kts. (29 MPH)

Our experienced yacht broker, Andrey Shestakov, will help you choose and buy a yacht that best suits your needs **AMELIA — CUSTOM LINE** from our catalogue. Presently, at Shestakov Yacht Sales Inc., we have a wide variety of yachts available on our sale's list. We also work in close contact with all the big yacht manufacturers from all over the world.

If you would like to buy a yacht **AMELIA — CUSTOM LINE** or would like help answering any questions concerning purchasing, selling or chartering a yacht, please call **+1(954)274-4435**

---

# TABLE OF CONTENTS

---

TABLE OF CONTENTS	2
SPECIFICATIONS	4
Overview	4
Basic Information	4
Dimensions	4
Speed, Capacities and Weight	4
Accommodations	4
Hull and Deck Information	4
Engine Information	5
PHOTOS	6
IMG-20220317-WA0031	6
IMG-20220317-WA0050	6
IMG-20220317-WA0053	6
IMG-20220317-WA0041	6
IMG-20220317-WA0034	7
IMG-20220317-WA0036	7
IMG-20220317-WA0039	7
IMG-20220317-WA0063	7
IMG-20220317-WA0061	8
IMG-20220317-WA0035	8
IMG-20220317-WA0062	8
IMG-20220317-WA0066	8
IMG-20220317-WA0069	9
IMG-20220317-WA0072	9
IMG-20220317-WA0073	9
IMG-20220317-WA0074	9
IMG-20220317-WA0077	10
CONTACTS	11

---

Contact details	11
Telephones	11
Office hours	11
Address	11

---

# SPECIFICATIONS

---

## Overview

---

38.36 m M/Y AMELIA was built by Customline in 2018 and is presented in immaculate condition.

## Basic Information

---

**Category:** Motor Yacht

**Model Year:** 2018

**Year Built:** 2018

**Country:** Turkey

## Dimensions

---

**LOA:** 125' 11" (38.36mm)

**Beam:** 25.09

**Max Draft:** 7' (2.13mm)

## Speed, Capacities and Weight

---

**Cruise Speed:** 21 Knots Kts. (24 MPH)

**Max Speed:** 25 Knots Kts. (29 MPH)

**Water Capacity:** 3000 Gallons

**Fuel Capacity:** 4226.75 Gal Gallons

## Accommodations

---

**Total Cabins:** 5

**Sleeps:** 12

**Crew Cabin:** 7

## Hull and Deck Information

---

**Hull Material:** Fiberglass

---

## Engine Information

---

**Engines:** 2

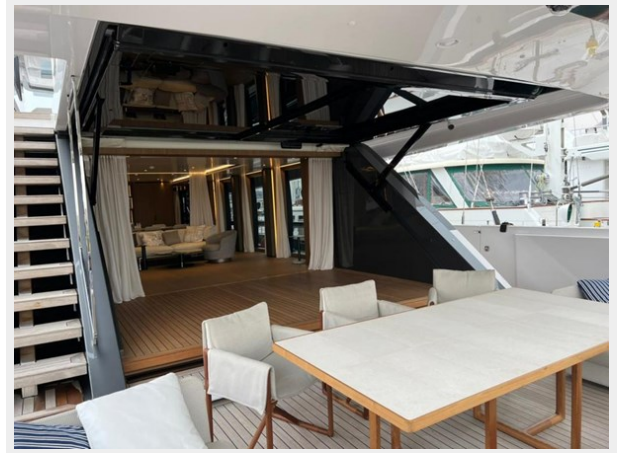
**Manufacturer:** MTU

# PHOTOS

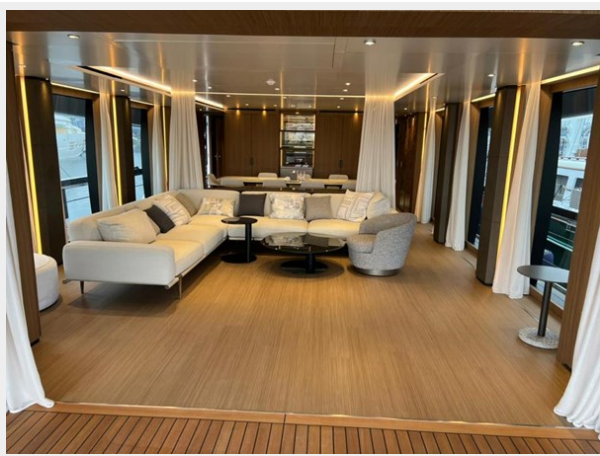
**IMG-20220317-WA0031**



**IMG-20220317-WA0050**



**IMG-20220317-WA0053**



**IMG-20220317-WA0041**



**IMG-20220317-WA0034**



**IMG-20220317-WA0036**



**IMG-20220317-WA0039**



**IMG-20220317-WA0063**



IMG-20220317-WA0061



IMG-20220317-WA0035



IMG-20220317-WA0062

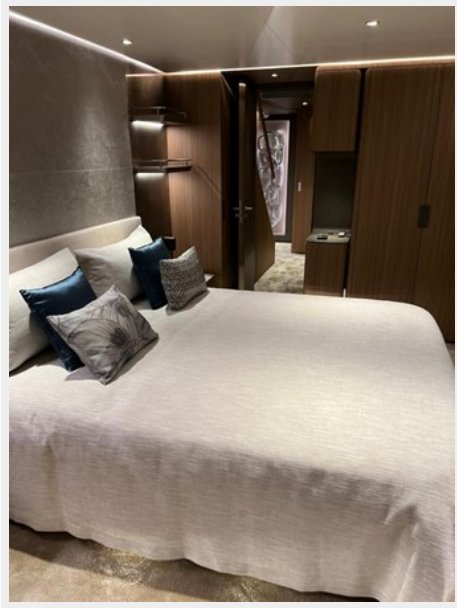


IMG-20220317-WA0066





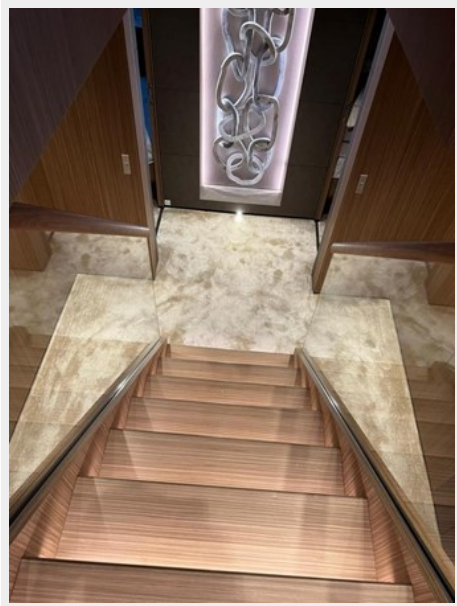
IMG-20220317-WA0069



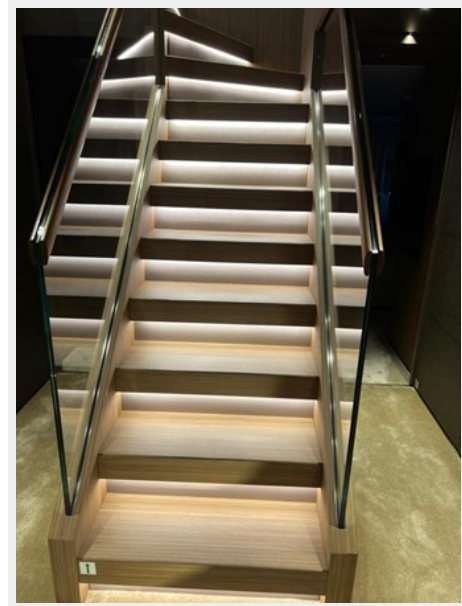
IMG-20220317-WA0072



IMG-20220317-WA0073



IMG-20220317-WA0074



IMG-20220317-WA0077



# CONTACTS

---

Andrey Shestakov, leading yacht broker of the sales department of Shestakov Yacht Sales Inc. Shestakov Yacht Sales Inc., the official representative of the Miami/Fort Lauderdale FL headquarters.

## Contact details

---

Email: [andrey@shestakovyachtsales.com](mailto:andrey@shestakovyachtsales.com)

Web: [shestakovyachtsales.com/en/](http://shestakovyachtsales.com/en/)

## Telephones

---

USA: +1(954)274-4435

## Office hours

---

Monday – Saturday: **9:00 - 21:00** EDT

Sunday: **closed**

## Address

---



Harbour Towne Marina, 850 NE 3rd St,  
STE 213, Dania, FL 33004