

DADDY'S DREAM — VIKING



Builder: VIKING

Year Built: 1998

Model: Sport Fisherman

Price: PRICE ON APPLICATION

Location: Jamaica

LOA: 58' (17.68mm)

Beam: 18

Max Draft: 5' 3" (1.6mm)

Cruise Speed: 30 Knots Kts. (35 MPH)

Max Speed: 38 Knots Kts. (44 MPH)

Our experienced yacht broker, Andrey Shestakov, will help you choose and buy a yacht that best suits your needs **DADDY'S DREAM — VIKING** from **our catalogue**. Presently, at **Shestakov Yacht Sales Inc.**, we have a wide variety of yachts available on **our sale's list**. We also work in close contact with all the big **yacht manufacturers** from all over the world.

If you would like to buy a yacht **DADDY'S DREAM — VIKING** or would like help answering any questions concerning purchasing, selling or chartering a yacht, please call **+1(954)274-4435**

TABLE OF CONTENTS

TABLE OF CONTENTS	2
SPECIFICATIONS	5
Overview	5
Basic Information	5
Dimensions	6
Speed, Capacities and Weight	6
Accommodations	6
Hull and Deck Information	6
Engine Information	6
PHOTOS	7
2	7
3	7
4	7
5	7
6	7
7	7
8	8
9	8
10	8
11	8
12	8
13	8
14	9
15	9
16	9
17	9
18	9
19	9

20	10
21	10
22	10
23	10
24	11
25	11
26	11
27	11
28	11
29	11
30	12
31	12
32	12
33	12
34	13
35	13
36	13
37	13
38	13
39	13
40	14
41	14
42	14
43	14
44	14
45	14
46	15
47	15
48	15

49	15
CONTACTS	16
Contact details	16
Telephones	16
Office hours	16
Address	16

SPECIFICATIONS

Overview

New to market.

This 58 is cleanest one on the market. Maintained by a knowledgeable owner with complete service records. Owner purchased the boat with 2300hrs and completed the 2000 hr service. Boat has 2700hrs on Mans 1100HP engines. Boat cruises at 30 knots top 38 knots.

Boat is located 5 min from the airport in Kingston.

Recent upgrades:

- New Garmin Electronics package.
- New led lighting throughout.
- New Eskimo Ice maker.
- New Fusion stereo system.
- New smart TV's throughout.
- New water maker.
- New Pipe Welders sun shade.
- New washer dryer.
- New carpet and window blinds
- Bottom job Oct 2020.

Basic Information

Category: Sport Fisherman

Model Year: 1998

Year Built: 1998

Country: Jamaica

Dimensions

LOA: 58' (17.68mm)

Beam: 18

Max Draft: 5' 3" (1.6mm)

Speed, Capacities and Weight

Cruise Speed: 30 Knots Kts. (35 MPH) **Max Speed:** 38 Knots Kts. (44 MPH)

Accommodations

Total Cabins: 3

Total Heads: 3

Hull and Deck Information

Hull Material: Fiberglass

Engine Information

Engines: 2

Manufacturer: MAN

Engine Type: Inboard

Fuel Type: Diesel

PHOTOS

2



3



4



5



6



7



8



9



10



11



12



13



14



15



16



17



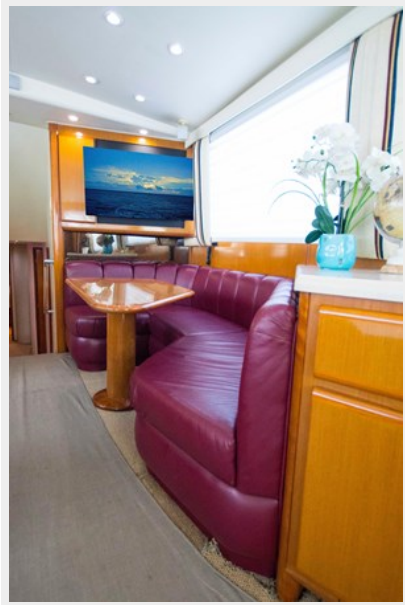
18



19



20



21



22



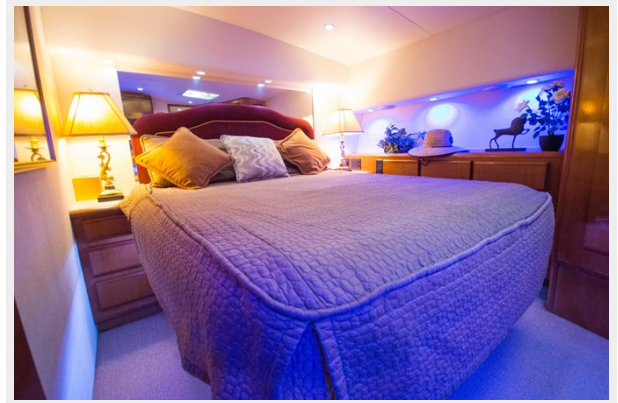
23



24



25



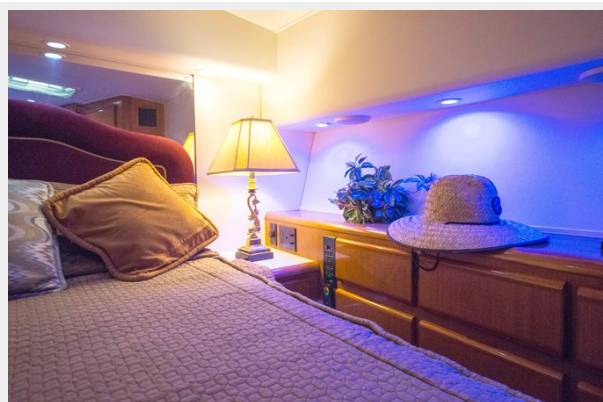
26



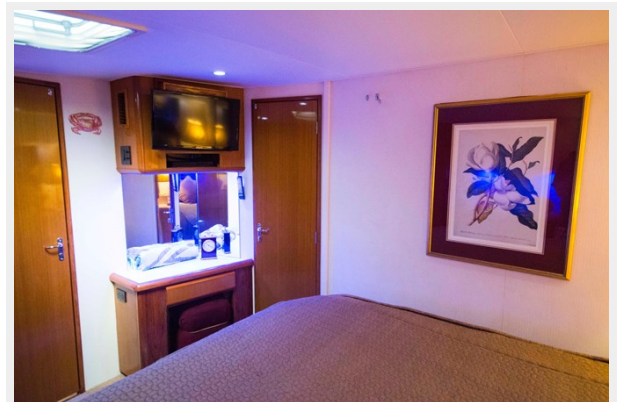
27



28



29



30



31



32



33



34



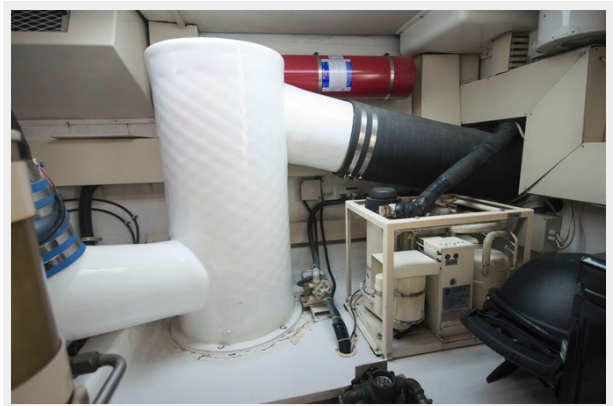
35



36



37



38



39



40



41



42



43



44



45



46



47



48



49



CONTACTS

Andrey Shestakov, leading yacht broker of the sales department of Shestakov Yacht Sales Inc. Shestakov Yacht Sales Inc., the official representative of the Miami/Fort Lauderdale FL headquarters.

Contact details

Email: **andrey@shestakovyachtsales.com**

Web: shestakovyachtsales.com/en/

Telephones

USA: **+1(954)274-4435**

Office hours

Monday – Saturday: **9:00 - 21:00** EDT

Sunday: **closed**

Address



Harbour Towne Marina, 850 NE 3rd St, STE 213, Dania, FL 33004