

## STATE OF GRACE — PERINI NAVI



**Builder:** PERINI NAVI

**Year Built:** 2013

**Model:** Sloop

**Price:** PRICE ON APPLICATION

**LOA:** 129' 4" (39.4mm)

**Beam:** 29.95

**Min Draft:** 11' 6" (3.5mm)

**Max Draft:** 29' 11" (9.1mm)

**Cruise Speed:** 10.5 Knots Kts. (12 MPH)

**Max Speed:** 14 Knots Kts. (16 MPH)

Our experienced yacht broker, Andrey Shestakov, will help you choose and buy a yacht that best suits your needs **STATE OF GRACE — PERINI NAVI** from our catalogue. Presently, at Shestakov Yacht Sales Inc., we have a wide variety of yachts available on our sale's list. We also work in close contact with all the big yacht manufacturers from all over the world.

If you would like to buy a yacht **STATE OF GRACE — PERINI NAVI** or would like help answering any questions concerning purchasing, selling or chartering a yacht, please call **+1(954)274-4435**

---

# TABLE OF CONTENTS

---

TABLE OF CONTENTS	2
SPECIFICATIONS	3
Overview	3
Basic Information	3
Dimensions	4
Speed, Capacities and Weight	4
Accommodations	4
Hull and Deck Information	4
Engine Information	4
PHOTOS	5
CONTACTS	13
Contact details	13
Telephones	13
Office hours	13
Address	13

---

# SPECIFICATIONS

---

## Overview

---

The 39.40m 2013 Perini Navi sailing yacht STATE OF GRACE, with her four-cabin layout and quality interior finish, this sailing sloop offers excellent charter potential.

STATE OF GRACE provides excellent sailing performance thanks to her Ron Holland naval architecture and Southern Spars carbon mast, boom and ECsix rigging package.

During her 2019/2020 winter refit, STATE OF GRACE had a top end overhaul of her main engine, two new generators were fitted,

and her rigging was checked and polished. In July 2020, she was given a new blade jib sail and 90% of her teak decks were recaulked. STATE OF GRACE can accommodate a maximum of nine guests across four cabins, including a full-beam Owner's suite, two queen-size double cabins and a convertible twin with an extra Pullman berth. STATE OF GRACE boasts Perini Navi's typical ease of access to and from the water via the large aft swim platform, which comes courtesy of a fold-down transom and a side boarding ladder. Assisted by a CAT C18 670hp/500 kw engine, STATE OF GRACE has a top speed of 14 knots and cruises at 9 knots. **Key Features**

- Ron Holland Naval Architecture
- 4 cabin layout
- Unusually large and comfortable cockpit
- Aft swim platform
- 2 x new generators recently installed; top end overhaul on main engine
- Full rig service
- Highly rated charter yacht

## Basic Information

---

**Category:** Sloop

**Model Year:** 2013

**Year Built:** 2013

---

## Dimensions

---

**LOA:** 129' 4" (39.4mm)

**LWL:** 111' 11" (34.1mm)

**Beam:** 29.95

**Min Draft:** 11' 6" (3.5mm)

**Max Draft:** 29' 11" (9.1mm)

---

## Speed, Capacities and Weight

---

**Cruise Speed:** 10.5 Knots Kts. (12 MPH)

**Cruise Speed Range:** 3000

**Max Speed:** 14 Knots Kts. (16 MPH)

**Gross Tonnage:** 254 Pounds

**Water Capacity:** 5000 Gallons

**Fuel Capacity:** 3804.08 Gal Gallons

---

## Accommodations

---

**Total Cabins:** 4

**Sleeps:** 9

**Crew Cabin:** 6

---

## Hull and Deck Information

---

**Hull Material:** Aluminum

**Deck Material:** Teak

**Hull Designer:** Ron Holland Design / Perini Navi

**Exterior Designer:** Perini Navi

**Interior Designer:** Perini Navi

---

## Engine Information

---

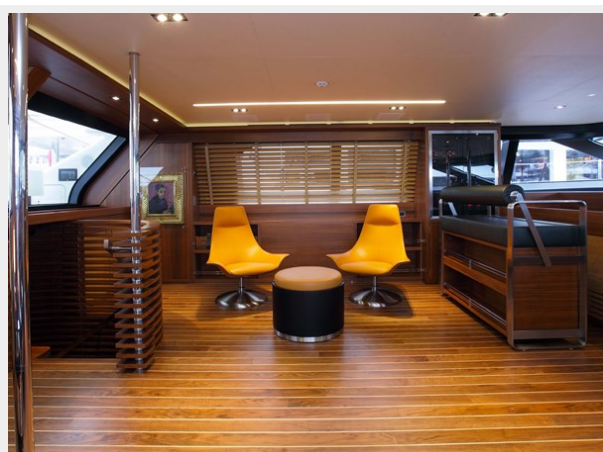
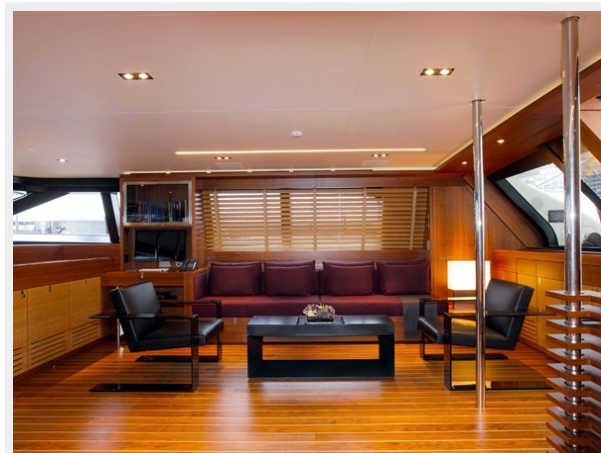
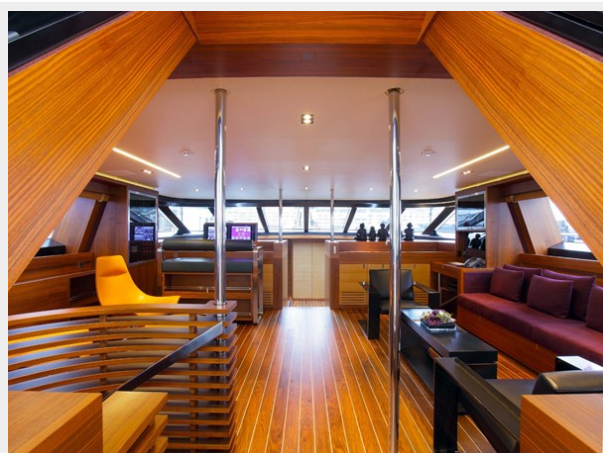
**Engines:** 1

**Manufacturer:** CAT

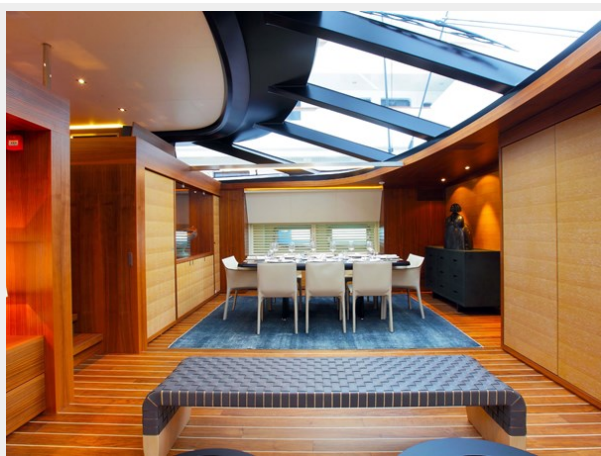
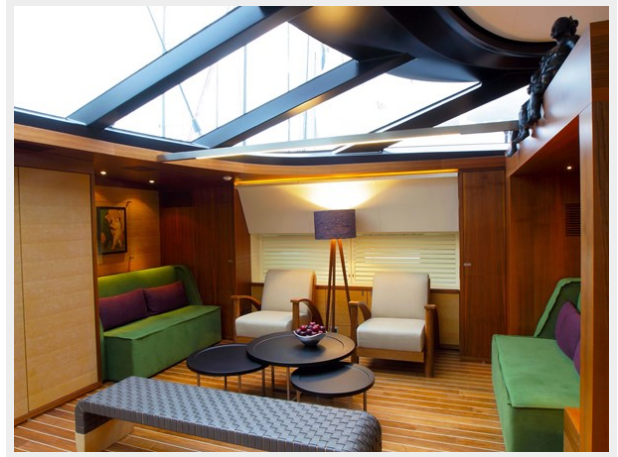
**Engine Type:** Inboard



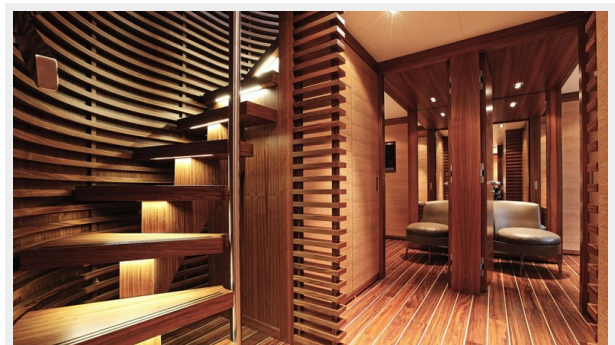
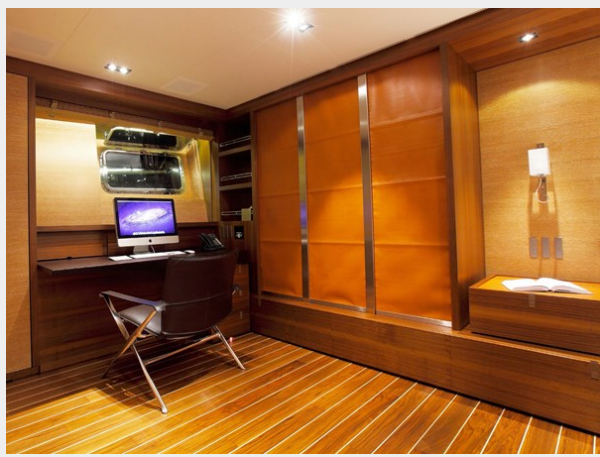
# PHOTOS





























# CONTACTS

---

Andrey Shestakov, leading yacht broker of the sales department of Shestakov Yacht Sales Inc. Shestakov Yacht Sales Inc., the official representative of the Miami/Fort Lauderdale FL headquarters.

## Contact details

---

Email: [andrey@shestakovyachtsales.com](mailto:andrey@shestakovyachtsales.com)

Web: [shestakovyachtsales.com/en/](http://shestakovyachtsales.com/en/)

## Telephones

---

USA: +1(954)274-4435

## Office hours

---

Monday – Saturday: **9:00 - 21:00** EDT

Sunday: **closed**

## Address

---



Harbour Towne Marina, 850 NE 3rd St,  
STE 213, Dania, FL 33004