

## YOUNG GIRL — SUNSEEKER



**Builder:** SUNSEEKER

**Year Built:** 2006

**Model:** Motor Yacht

**Price:** PRICE ON APPLICATION

**Location:** United States

**LOA:** 50' (15.24mm)

**Beam:** 15.08

**Min Draft:** 3' 11" (1.19mm)

**Max Draft:** 4' 1" (1.24mm)

**Cruise Speed:** 25 Knots Kts. (29 MPH)

**Max Speed:** 30 Knots Kts. (35 MPH)

Our experienced yacht broker, Andrey Shestakov, will help you choose and buy a yacht that best suits your needs **Young Girl — SUNSEEKER** from **our catalogue**. Presently, at **Shestakov Yacht Sales Inc.**, we have a wide variety of yachts available on **our sale's list**. We also work in close contact with all the big **yacht manufacturers** from all over the world.

If you would like to buy a yacht **Young Girl — SUNSEEKER** or would like help answering any questions concerning purchasing, selling or chartering a yacht, please call **+1(954)274-4435**

# TABLE OF CONTENTS

TABLE OF CONTENTS	2
SPECIFICATIONS	5
Overview	5
Basic Information	5
Dimensions	5
Speed, Capacities and Weight	5
Accommodations	5
Hull and Deck Information	6
Engine Information	6
PHOTOS	7
Salon From Aft	7
Salon to Port From Aft	7
Salon Looking Aft	7
Salon to Stbd From Aft	7
Bar Starboard Side of Salon	7
Helm Detail	7
Bow and Stern Thruster Controls	8
Galley from Above	8
Galley to Fwd Port	8
Lower Helm	8
Galley Aft to Port	8
Washer Dryer	8
Storage-Pantry	9
Fridge Freezer	9
Master Stateroom Berth	9
Master Fwd to Port	9
Master Fwd to Stbd	9
Master Head	9

---

Master Shower	10
Bunk Bed Stateroom	10
VIP Fwd Stateroom 2	10
VIP Fwd Stateroom	10
Guest Shower and Washbasin	11
Guest Head and Shower	11
Foredeck Sunpad	11
Windlass Detail	11
Side Decks	11
Foredeck from Bridge	11
Flybridge Helm and Sunpad	12
Flybridge Wetbar	12
FB Steps	12
Hydraulic Platform	12
Aft Deck Gate	12
Aft Deck Seating	12
Lazarette Storage Area	13
Engine Room Aft to Stbd	13
Starboard Engine	13
Port Engine Filters	13
Port Engine Detail	13
Fire System	13
Generator	14
Main Electrical Panel	14
Port Profile	14
Stern Shot	14
Stbd Profile	14
Storage Covers	14
Storage Cover	15

---

---

New Teak decking installed June 2021	15
New Teak decking installed June 2021	15
New Teak decking installed June 2021	15
New Teak decking installed June 2021	15
New Teak decking installed June 2021	15
CONTACTS	16
Contact details	16
Telephones	16
Office hours	16
Address	16

---

# SPECIFICATIONS

---

## Overview

---

N/A

## Basic Information

---

**Category:** Motor Yacht

**Sub Category:** Flybridge

**Model Year:** 2006

**Year Built:** 2006

**Country:** United States

## Dimensions

---

**LOA:** 50' (15.24mm)

**Beam:** 15.08

**Min Draft:** 3' 11" (1.19mm)

**Max Draft:** 4' 1" (1.24mm)

## Speed, Capacities and Weight

---

**Cruise Speed:** 25 Knots Kts. (29 MPH) **Cruise Speed Range:** 270

**Max Speed:** 30 Knots Kts. (35 MPH) **Gross Tonnage:** 26 Pounds

**Water Capacity:** 132 Gallons **Holding Tank:** 50 Gal Gallons

**Fuel Capacity:** 660 Gal Gallons

## Accommodations

---

**Total Cabins:** 3

**Sleeps:** 6

**Total Heads:** 2

---

## Hull and Deck Information

---

**Hull Material:** Fiberglass

**Deck Material:** Fiberglass

**Hull Configuration:** Deep Vee

**Hull Designer:** Don Shead

**Exterior Designer:** Don Shead

---

## Engine Information

---

**Engines:** 2

**Manufacturer:** Volvo

**Engine Type:** Inboard

**Fuel Type:** Diesel

# PHOTOS

**Salon From Aft**



**Salon to Port From Aft**



**Salon Looking Aft**



**Salon to Stbd From Aft**



**Bar Starboard Side of Salon**



**Helm Detail**



### Bow and Stern Thruster Controls



### Galley from Above



### Galley to Fwd Port



### Lower Helm



### Galley Aft to Port



### Washer Dryer





**Storage-Pantry**



**Fridge Freezer**



**Master Stateroom Berth**



**Master Fwd to Port**



**Master Fwd to Stbd**



**Master Head**



### Master Shower



### Bunk Bed Stateroom



### VIP Fwd Stateroom 2



### VIP Fwd Stateroom



### Guest Shower and Washbasin



### Guest Head and Shower



### Foredeck Sunpad



### Windlass Detail



### Side Decks



### Foredeck from Bridge



### Flybridge Helm and Sunpad



### Flybridge Wetbar



### FB Steps



### Hydraulic Platform



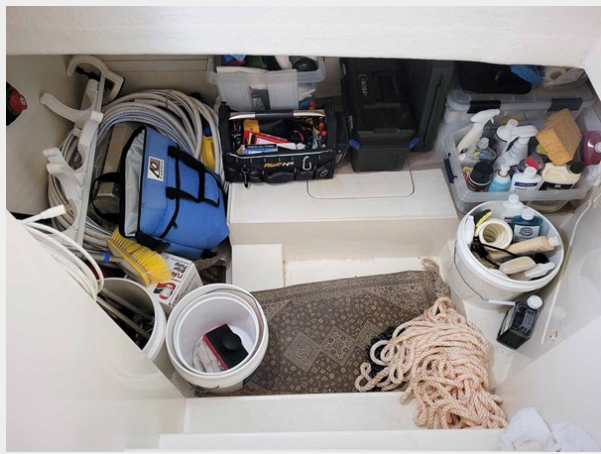
### Aft Deck Gate



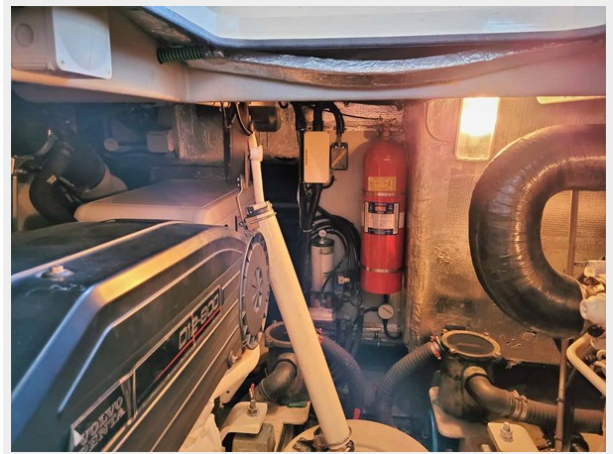
### Aft Deck Seating



**Lazarette Storage Area**



**Engine Room Aft to Stbd**



**Starboard Engine**



**Port Engine Filters**



**Port Engine Detail**



**Fire System**



**Generator**



**Main Electrical Panel**



**Port Profile**



**Stern Shot**



**Stbd Profile**



**Storage Covers**



**Storage Cover**



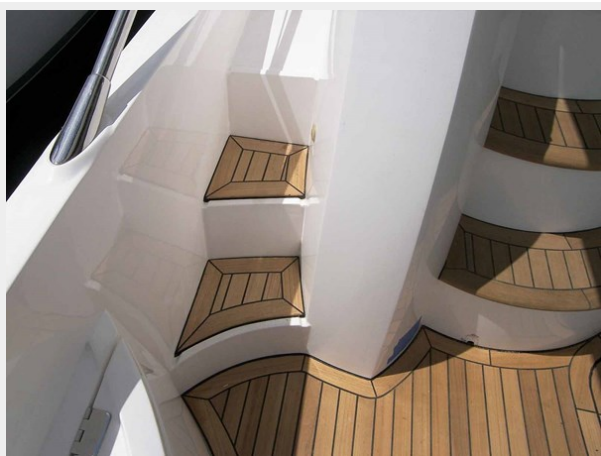
**New Teak decking installed June 2021**



**New Teak decking installed June 2021 New Teak decking installed June 2021**



**New Teak decking installed June 2021 New Teak decking installed June 2021**



# CONTACTS

---

Andrey Shestakov, leading yacht broker of the sales department of Shestakov Yacht Sales Inc. Shestakov Yacht Sales Inc., the official representative of the Miami/Fort Lauderdale FL headquarters.

## Contact details

---

Email: **andrey@shestakovyachtsales.com**

Web: [shestakovyachtsales.com/en/](https://shestakovyachtsales.com/en/)

## Telephones

---

USA: **+1(954)274-4435**

## Office hours

---

Monday – Saturday: **9:00 - 21:00** EDT

Sunday: **closed**

## Address

---



Harbour Towne Marina, 850 NE 3rd St, STE 213, Dania, FL 33004