

FINTRY — CUSTOM



Builder: CUSTOM

Year Built: 1972

Model: Trawler Yacht

Price: PRICE ON APPLICATION

LOA: 78' 11" (24.05mm)

Beam: 21

Max Draft: 7' 6" (2.29mm)

Cruise Speed: 8.5 Knots Kts. (10 MPH)

Our experienced yacht broker, Andrey Shestakov, will help you choose and buy a yacht that best suits your needs **Fintry — CUSTOM** from our catalogue. Presently, at Shestakov Yacht Sales Inc., we have a wide variety of yachts available on our sale's list. We also work in close contact with all the big yacht manufacturers from all over the world.

If you would like to buy a yacht **Fintry — CUSTOM** or would like help answering any questions concerning purchasing, selling or chartering a yacht, please call **+1(954)274-4435**

TABLE OF CONTENTS

TABLE OF CONTENTS	2
SPECIFICATIONS	3
Overview	3
Basic Information	3
Dimensions	4
Speed, Capacities and Weight	4
Accommodations	4
Hull and Deck Information	4
Engine Information	4
PHOTOS	5
CONTACTS	21
Contact details	21
Telephones	21
Office hours	21
Address	21

SPECIFICATIONS

Overview

MV FINTRY is available for sale. FINTRY is not a "white yacht" but a rugged, go-anywhere vessel.

The MV FINTRY has 5000 nm range. FINTRY was one of sixty-four Fleet Tenders built for the British Royal Navy from 1963 through 1982. FINTRY's keel was laid in 1970 and commissioned in 1972, by John Lewis & Sons, Ltd., in Aberdeen, Scotland, a notable commercial shipyard.

Notable that FINTRY was built to Class to Lloyd's 100A1+ UK Coasting Service. These overbuilt, quality vessels were made to operate in the North Seas around the UK, the Continent and the English Channel. There were four different deckhouse configurations, however their hulls and machinery were identical. This design was to accommodate 100 passengers or 25 tons of cargo in two holds and on deck. A thorough history of this vessel's log has been created by the Owner. After approximately 25 years in service to the Royal British Navy, the Navy decided to privatize her work and then the vessel had to adopt the MCA (British Coastguard) safety regulations. Again, the vessel received some professional upgrades and benefitted from other significant modifications. Vessel received an extended deckhouse, new placement of bulkhead, some hatches were plated over, and holds were left unused in this service.

Eventually the vessel was sold in 2001 and then the current owners bought her in 2002. Again, major modifications were made by Manor Marine (UK) a Yard with great experience. Wheelhouse was extended 4', a new Caterpillar 3406 was installed for main power, two Northern Lights generators were installed, a bow thruster was installed, a GYRO Stabilizer unit was installed in 2019 and the hull was stripped to white metal and repainted. Rub rail was replaced all around. Two new fuel tanks of 1,800 USG each, were added along with two new water tanks of 500 USG each.

The vessel's fuel consumption is one USG of fuel per one nautical mile at 8.5 kts.

FINTRY is a superb sea boat; The Gyro stabilizer is a unique, added feature for the ship's stability.

Basic Information

Category: Trawler Yacht

Model Year: 1972

Year Built: 1972

Dimensions

LOA: 78' 11" (24.05mm)

LOD: 75' (22.86mm)

Beam: 21

Max Draft: 7' 6" (2.29mm)

Speed, Capacities and Weight

Cruise Speed: 8.5 Knots Kts. (10 MPH)

Water Capacity: 1000 Gallons

Holding Tank: 1750 Gal Gallons

Fuel Capacity: 5400 Gal Gallons

Accommodations

Total Cabins: 3

Hull and Deck Information

Hull Material: Steel

Exterior Designer: British Royal Navy

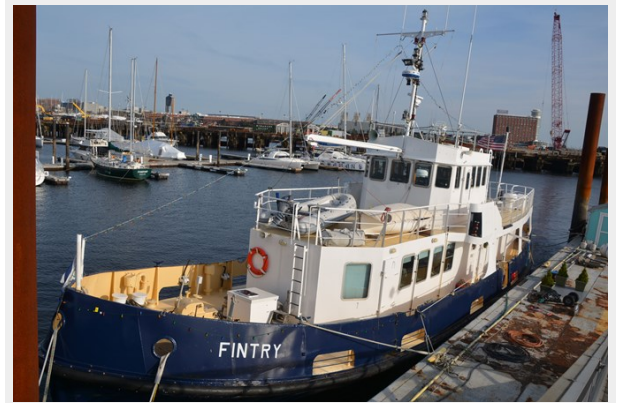
Engine Information

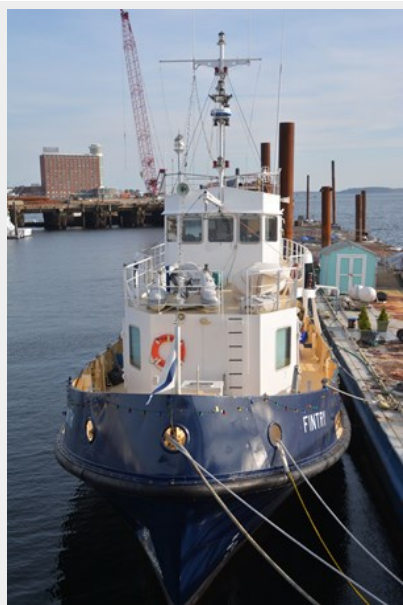
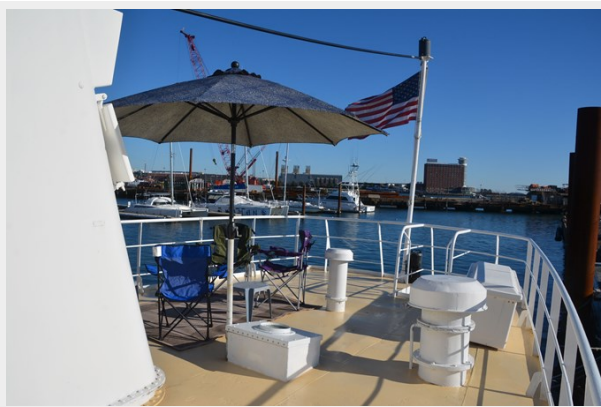
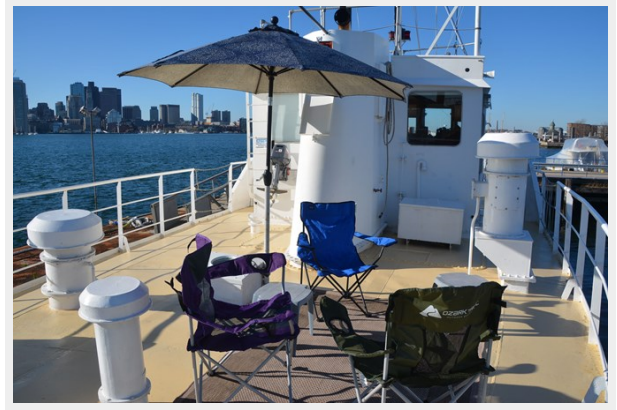
Engines: 2

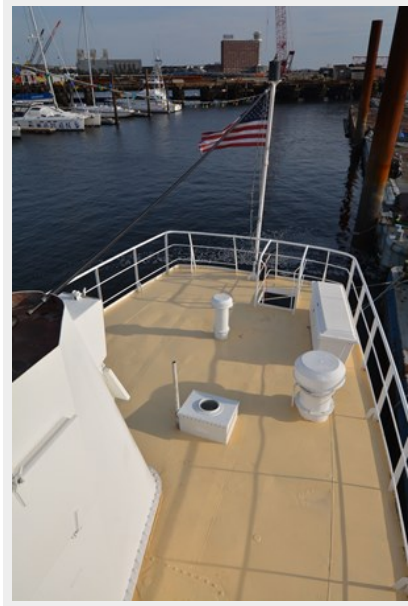
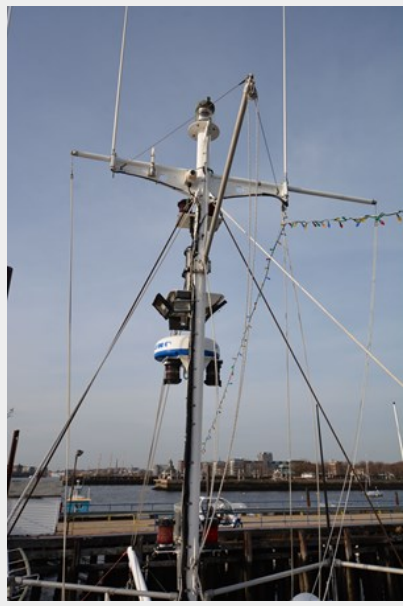
Manufacturer: Caterpillar

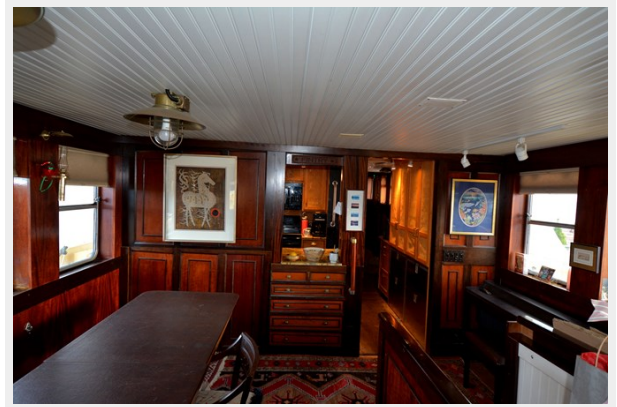
PHOTOS





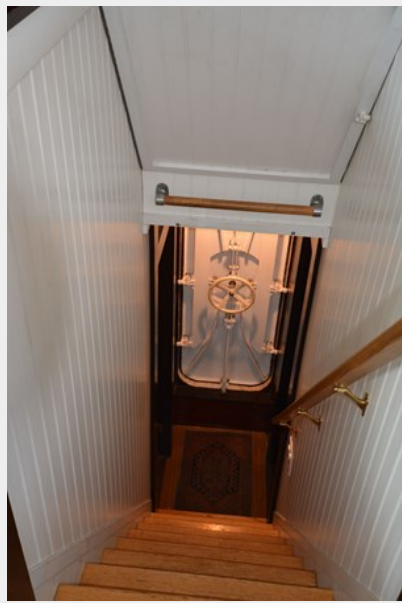






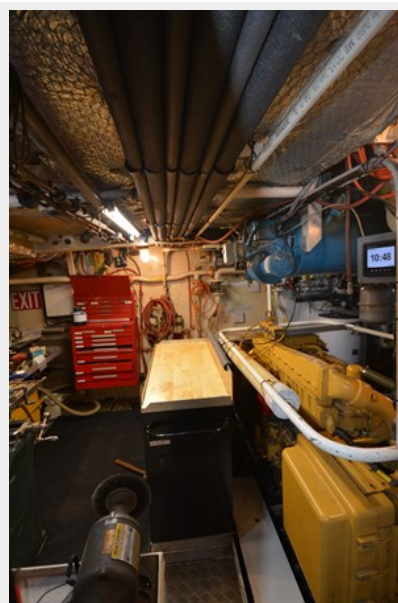




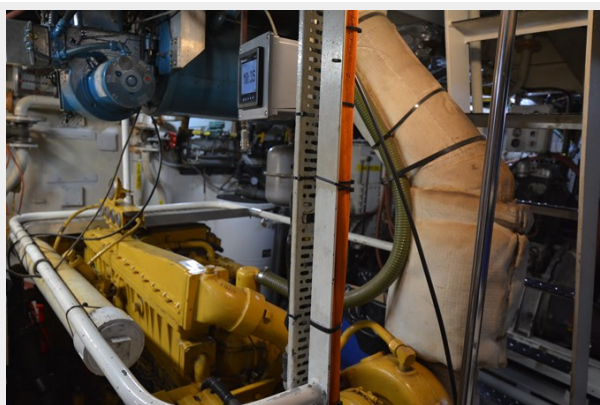


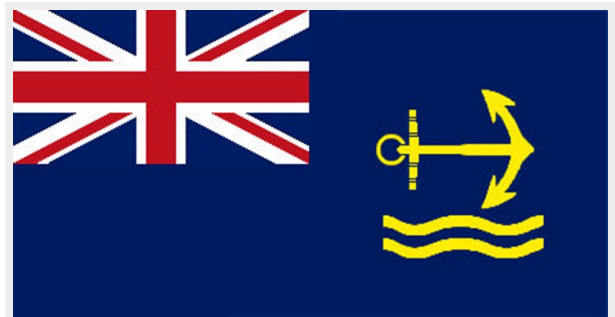


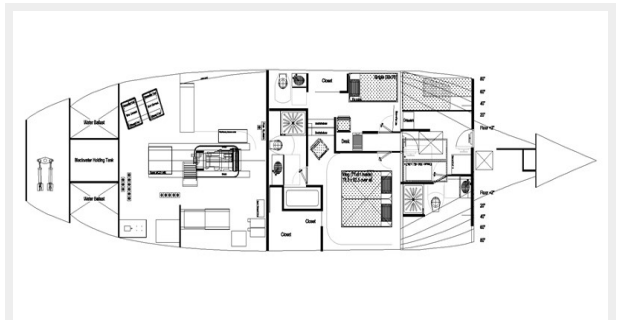
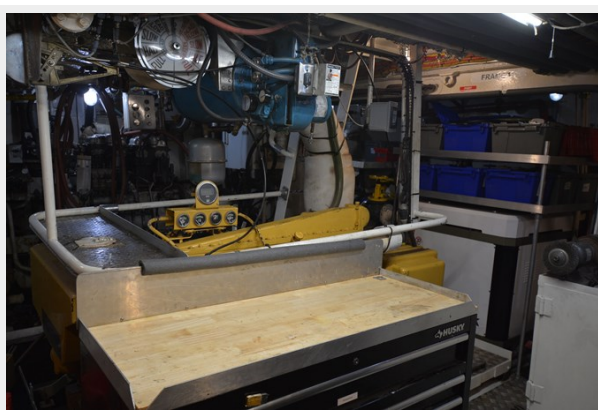
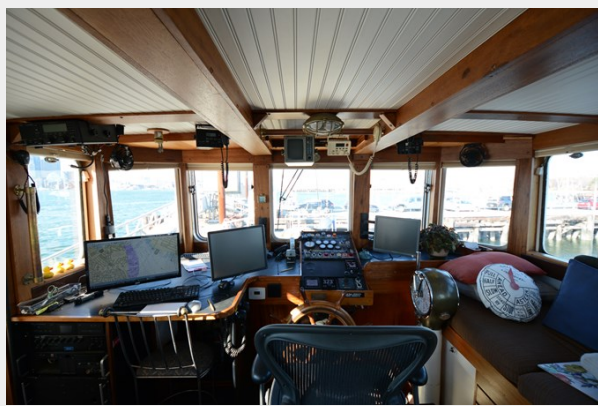


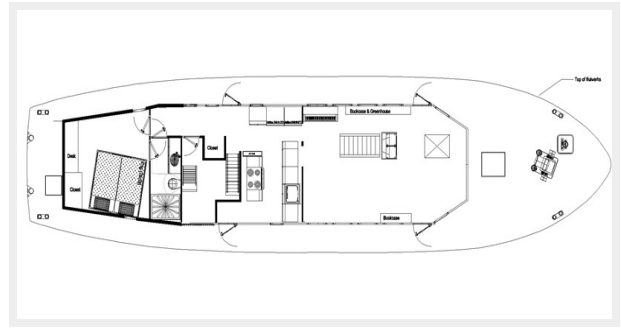
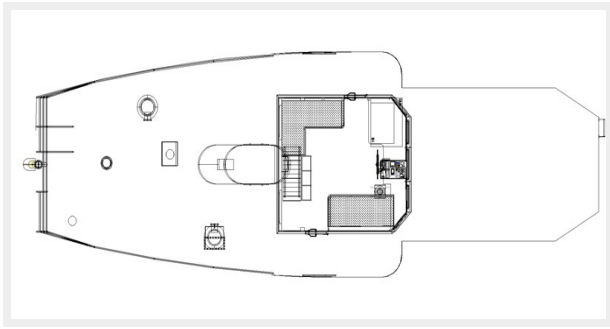












CONTACTS

Andrey Shestakov, leading yacht broker of the sales department of Shestakov Yacht Sales Inc. Shestakov Yacht Sales Inc., the official representative of the Miami/Fort Lauderdale FL headquarters.

Contact details

Email: andrey@shestakovyachtsales.com

Web: shestakovyachtsales.com/en/

Telephones

USA: +1(954)274-4435

Office hours

Monday – Saturday: **9:00 - 21:00** EDT

Sunday: **closed**

Address



Harbour Towne Marina, 850 NE 3rd St,
STE 213, Dania, FL 33004