

EAST BY SOUTH — BRUCKMANN CUSTOM YACHTS



Builder:

BRUCKMANN CUSTOM YACHTS

Year Built: 2019

Model: Motor Yacht

Price: PRICE ON APPLICATION

Location: United States

LOA: 52' 6" (16mm)

Beam: 15

Max Draft: 4' 9" (1.45mm)

Cruise Speed: 23 Knots Kts. (26 MPH)

Max Speed: 27 Knots Kts. (31 MPH)

Our experienced yacht broker, Andrey Shestakov, will help you choose and buy a yacht that best suits your needs **EAST BY SOUTH — BRUCKMANN CUSTOM YACHTS** from our catalogue. Presently, at Shestakov Yacht Sales Inc., we have a wide variety of yachts available on our sale's list. We also work in close contact with all the big yacht manufacturers from all over the world.

If you would like to buy a yacht **EAST BY SOUTH — BRUCKMANN CUSTOM YACHTS** or would like help answering any questions concerning purchasing, selling or chartering a yacht, please call +1(954)274-4435

TABLE OF CONTENTS

TABLE OF CONTENTS	2
SPECIFICATIONS	4
Overview	4
Basic Information	4
Dimensions	4
Speed, Capacities and Weight	4
Accommodations	5
Hull and Deck Information	5
Engine Information	5
PHOTOS	6
Starboard Profile	6
Salon	6
Salon	6
Salon	6
Helm	6
Helm	6
Helm and Salon	7
Helm and Galley	7
Galley	7
Owner Stateroom	7
Owner Stateroom	7
Owner En-suite Head	7
Passageway to Galley	8
Guest Twin Cabin	8
Engine Room	8
Aft Deck	8
Aft Deck	8
Aft Deck and Salon	8

Starboard Bow	9
Starboard Stern	9
Profile	9
Profile	9
CONTACTS	10
Contact details	10
Telephones	10
Office hours	10
Address	10

SPECIFICATIONS

Overview

EAST BY SOUTH is without a doubt the most nicely equipped and maintained vessel in her market segment. Stunning good looks, attention to detail, every upgrade possible and most up to date electronics available. Excellent mechanical and cosmetic condition. More photos available upon request.

Basic Information

Category: Motor Yacht

Model Year: 2020

Year Built: 2019

Country: United States

Dimensions

LOA: 52' 6" (16mm)

LWL: 43' 9" (13.34mm)

LOD: 47' (14.33mm)

Beam: 15

Max Draft: 4' 9" (1.45mm)

Speed, Capacities and Weight

Cruise Speed: 23 Knots Kts. (26 MPH)

Max Speed: 27 Knots Kts. (31 MPH)

Gross Tonnage: 15 Pounds

Water Capacity: 100 Gallons

Holding Tank: 72 Gal Gallons

Fuel Capacity: 472 Gal Gallons

Fuel Consumption: 0.97 Gal Gallons

Accommodations

Total Cabins: 2

Total Berths: 5

Sleeps: 5

Total Heads: 2

Hull and Deck Information

Hull Material: Fiberglass

Deck Material: Fiberglass

Hull Color: Flag Blue

Hull Designer: Mark Ellis

Exterior Designer: Mark Ellis

Interior Designer: Mark Bruckmann

Engine Information

Engines: 1

Manufacturer: Caterpillar

Engine Type: Inboard

Fuel Type: Diesel

PHOTOS

Starboard Profile



Salon



Salon



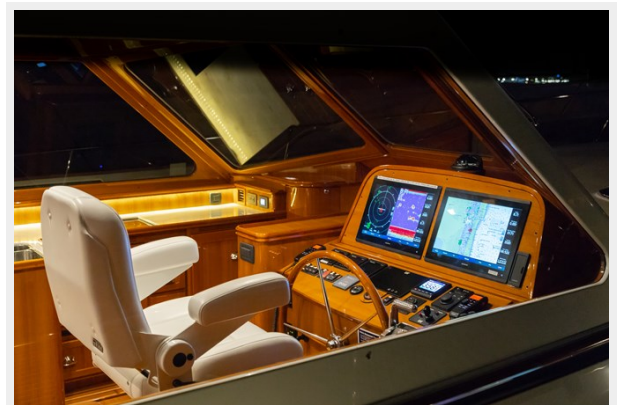
Salon



Helm



Helm



Helm and Salon



Helm and Galley



Galley



Owner Stateroom



Owner Stateroom



Owner En-suite Head



Guest Twin Cabin



Passageway to Galley



Engine Room



Aft Deck



Aft Deck



Aft Deck and Salon



Starboard Bow



Starboard Stern



Profile



Profile



CONTACTS

Andrey Shestakov, leading yacht broker of the sales department of Shestakov Yacht Sales Inc. Shestakov Yacht Sales Inc., the official representative of the Miami/Fort Lauderdale FL headquarters.

Contact details

Email: andrey@shestakovyachtsales.com

Web: shestakovyachtsales.com/en/

Telephones

USA: +1(954)274-4435

Office hours

Monday – Saturday: **9:00 - 21:00** EDT

Sunday: **closed**

Address



Harbour Towne Marina, 850 NE 3rd St,
STE 213, Dania, FL 33004