

NATIVA — ARZANA' NAVI



Builder: ARZANA' NAVI

Year Built: 2012

Model: Sloop

Price: PRICE ON APPLICATION

Location: Italy

LOA: 157' 6" (48mm)

Beam: 32.15

Min Draft: 16' 5" (5mm)

Max Draft: 25' 8" (7.8mm)

Cruise Speed: 10 Knots Kts. (12 MPH)

Max Speed: 13 Knots Kts. (15 MPH)

Our experienced yacht broker, Andrey Shestakov, will help you choose and buy a yacht that best suits your needs **NATIVA — ARZANA' NAVI** from our catalogue. Presently, at Shestakov Yacht Sales Inc., we have a wide variety of yachts available on our sale's list. We also work in close contact with all the big yacht manufacturers from all over the world.

If you would like to buy a yacht **NATIVA — ARZANA' NAVI** or would like help answering any questions concerning purchasing, selling or chartering a yacht, please call **+1(954)274-4435**

TABLE OF CONTENTS

TABLE OF CONTENTS	2
SPECIFICATIONS	4
Overview	4
Basic Information	4
Dimensions	4
Speed, Capacities and Weight	4
Accommodations	4
Hull and Deck Information	5
Engine Information	5
PHOTOS	6
Exterior - 1	6
Exterior - 2	6
Exterior - 3	6
Exterior - 4	6
Exterior - 6	6
Exterior - 5	6
Exterior - 7	7
Exterior - 8	7
Exterior - 9	7
Exterior - Fly Bridge	7
Owners Cabin	7
Owners Office	7
Main Deck - Dining	8
Main Deck - Staircase / Lounge	8
Gym - 1	8
Gym - 2	8
CONTACTS	9
Contact details	9

Telephones	9
Office hours	9
Address	9

SPECIFICATIONS

Overview

At 48m (157'6") NATIVA is a sailing sloop with superb hull lines, performance focused construction and is the most competitively priced vessel in this category. Designed by the renowned Tripp Design, this powerful sloop rig provides exhilarating performance even in light winds.

Basic Information

Category: Sloop

Model Year: 2012

Year Built: 2012

Country: Italy

Dimensions

LOA: 157' 6" (48mm)

LWL: 137' 2" (41.8mm)

Beam: 32.15

Min Draft: 16' 5" (5mm)

Max Draft: 25' 8" (7.8mm)

Speed, Capacities and Weight

Cruise Speed: 10 Knots Kts. (12 MPH)

Cruise Speed Range: 2400

Max Speed: 13 Knots Kts. (15 MPH)

Gross Tonnage: 303 Pounds

Water Capacity: 16500 Gallons

Fuel Capacity: 4411.67 Gal Gallons

Accommodations

Total Cabins: 5

Sleeps: 10

Crew Cabin: 8

Hull and Deck Information

Hull Material: Aluminum

Deck Material: Teak

Exterior Designer: Tripp Design

Interior Designer: Nunzio Da Vià

Engine Information

Engines: 1

Manufacturer: MAN

Engine Type: Inboard

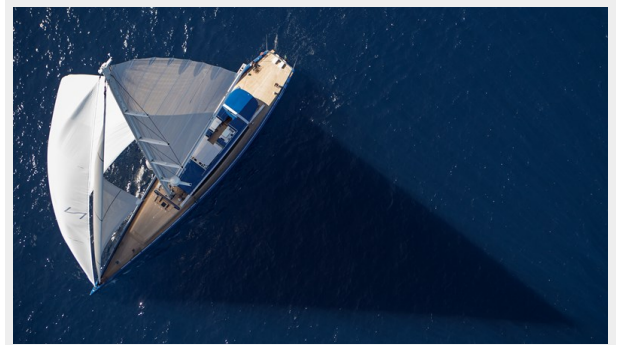
Fuel Type: Diesel

PHOTOS

Exterior - 1



Exterior - 2



Exterior - 3



Exterior - 4



Exterior - 5



Exterior - 6



Exterior - 7



Exterior - 8



Exterior - 9



Exterior - Fly Bridge



Owners Cabin



Owners Office



Main Deck - Dining



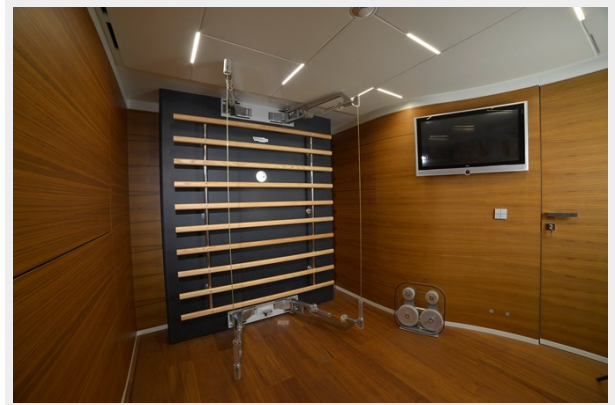
Main Deck - Staircase / Lounge



Gym - 1



Gym - 2



CONTACTS

Andrey Shestakov, leading yacht broker of the sales department of Shestakov Yacht Sales Inc. Shestakov Yacht Sales Inc., the official representative of the Miami/Fort Lauderdale FL headquarters.

Contact details

Email: andrey@shestakovyachtsales.com

Web: shestakovyachtsales.com/en/

Telephones

USA: +1(954)274-4435

Office hours

Monday – Saturday: **9:00 - 21:00** EDT

Sunday: **closed**

Address



Harbour Towne Marina, 850 NE 3rd St,
STE 213, Dania, FL 33004