

SOLID WASTE — PRESTIGE



Builder: PRESTIGE

Year Built: 2016

Model: Motor Yacht

Price: PRICE ON APPLICATION

Location: United States

LOA: 55' (16.76mm)

Beam: 15.66

Max Draft: 3' 10" (1.17mm)

Our experienced yacht broker, Andrey Shestakov, will help you choose and buy a yacht that best suits your needs **Solid Waste — PRESTIGE** from **our catalogue**. Presently, at **Shestakov Yacht Sales Inc.**, we have a wide variety of yachts available on **our sale's list**. We also work in close contact with all the big **yacht manufacturers** from all over the world.

If you would like to buy a yacht **Solid Waste — PRESTIGE** or would like help answering any questions concerning purchasing, selling or chartering a yacht, please call **+1(954)274-4435**

TABLE OF CONTENTS

TABLE OF CONTENTS	2
SPECIFICATIONS	3
Overview	3
Basic Information	3
Dimensions	3
Speed, Capacities and Weight	3
Accommodations	3
Hull and Deck Information	4
Engine Information	4
PHOTOS	5
CONTACTS	19
Contact details	19
Telephones	19
Office hours	19
Address	19

SPECIFICATIONS

Overview

"Solid Waste" is a low hour gently used Prestige that is in immaculate condition and the only 550 S with a Seakeeper on the market. This 550 S was freshwater kept until the summer of 2019 making it a must-see if you're in the market. The layout offers a spacious salon, aft galley, three staterooms with a massive full-beam master, two heads, and crew quarters. This vessel is ready for your next adventure and will not disappoint! Key Features Seakeeper Exceptional Condition Tender Included V-Kool Tint Bow Thruster Hydraulic Platform Exterior Cushions Recovered Cockpit Sun Shade

Basic Information

Category: Motor Yacht

Model Year: 2016

Year Built: 2016

Country: United States

Dimensions

LOA: 55' (16.76mm)

Beam: 15.66

Max Draft: 3' 10" (1.17mm)

Speed, Capacities and Weight

Water Capacity: 211 Gallons

Holding Tank: 31 Gal Gallons

Fuel Capacity: 581 Gal Gallons

Accommodations

Total Cabins: 3

Total Heads: 2

Hull and Deck Information

Hull Material: Fiberglass

Engine Information

Engines: 2

Manufacturer: Cummins

Engine Type: Inboard

Fuel Type: Diesel

PHOTOS





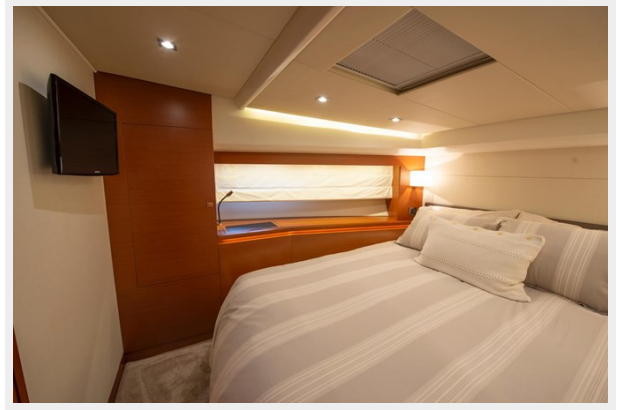


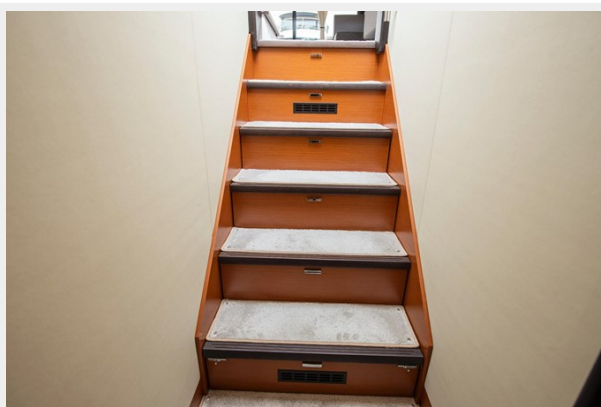
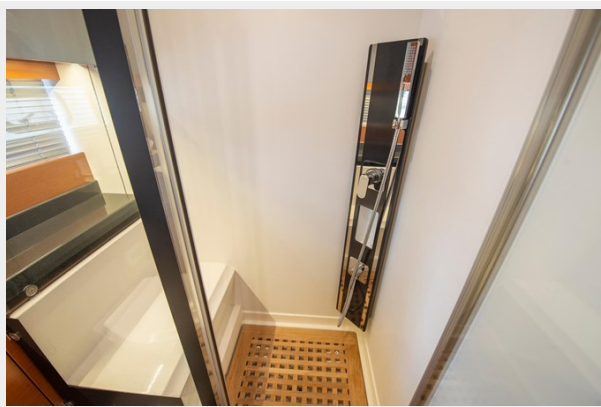




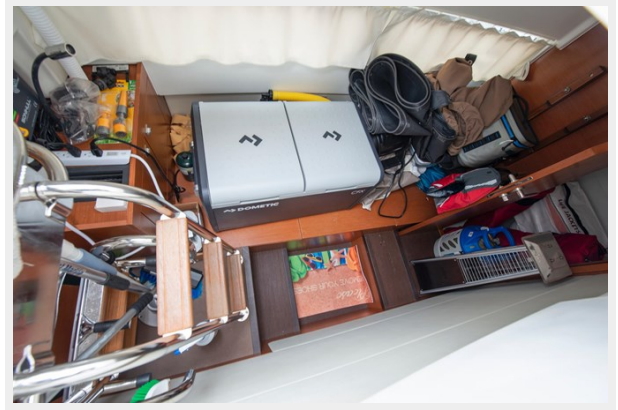


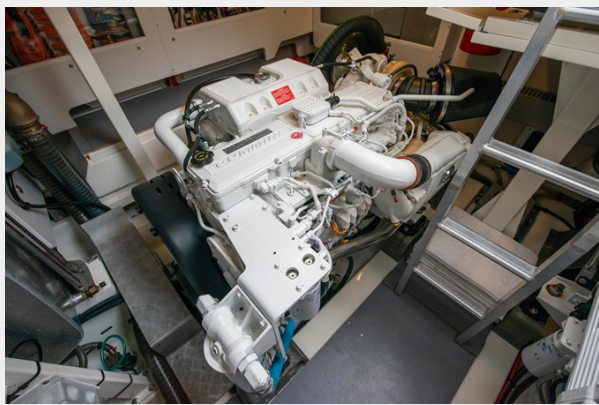
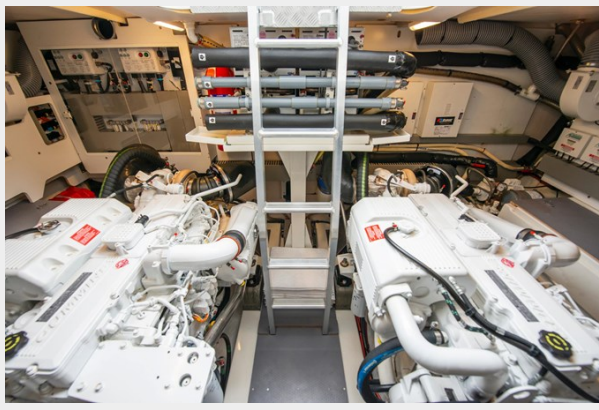


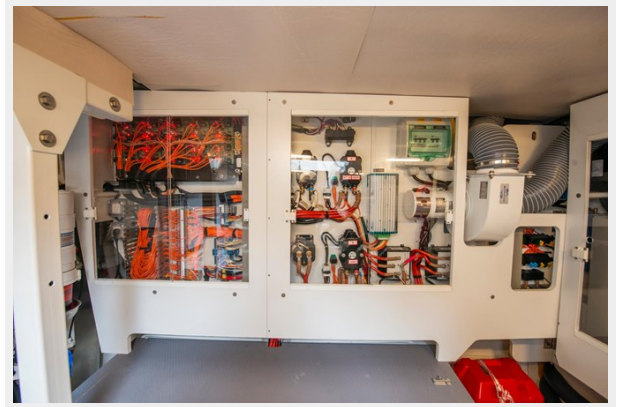














CONTACTS

Andrey Shestakov, leading yacht broker of the sales department of Shestakov Yacht Sales Inc. Shestakov Yacht Sales Inc., the official representative of the Miami/Fort Lauderdale FL headquarters.

Contact details

Email: **andrey@shestakovyachtsales.com**

Web: shestakovyachtsales.com/en/

Telephones

USA: **+1(954)274-4435**

Office hours

Monday – Saturday: **9:00 - 21:00** EDT

Sunday: **closed**

Address



Harbour Towne Marina, 850 NE 3rd St, STE 213, Dania, FL 33004