

MOSAIQUE — PROTEKSAN-TURQUOISE



Builder: PROTEKSAN-TURQUOISE

Year Built: 2002

Model: Motor Yacht

Price: PRICE ON APPLICATION

Location: Sint Maarten

LOA: 163' 9" (49.91mm)

Beam: 30.5

Min Draft: 9' 7" (2.92mm)

Max Draft: 9' 7" (2.92mm)

Cruise Speed: 13 Knots Kts. (15 MPH)

Max Speed: 15 Knots Kts. (17 MPH)

Our experienced yacht broker, Andrey Shestakov, will help you choose and buy a yacht that best suits your needs **MOSAIQUE — PROTEKSAN-TURQUOISE** from our catalogue. Presently, at Shestakov Yacht Sales Inc., we have a wide variety of yachts available on our sale's list. We also work in close contact with all the big yacht manufacturers from all over the world.

If you would like to buy a yacht **MOSAIQUE — PROTEKSAN-TURQUOISE** or would like help answering any questions concerning purchasing, selling or chartering a yacht, please call **+1(954)274-4435**

TABLE OF CONTENTS

TABLE OF CONTENTS	2
SPECIFICATIONS	4
Overview	4
Basic Information	4
Dimensions	4
Speed, Capacities and Weight	5
Accommodations	5
Hull and Deck Information	5
Engine Information	5
PHOTOS	6
Profile: MOSAIQUE 163' 2002/2020 Proteksan Tri-Deck Motor Yacht	6
Aft: MOSAIQUE 163' 2002/2020 Proteksan Tri-Deck Motor Yacht	6
Aerial: MOSAIQUE 163' 2002/2020 Proteksan Tri-Deck Motor Yacht	6
Jacuzzi: MOSAIQUE 163' 2002/2020 Proteksan Tri-Deck Motor Yacht	6
Sun Deck: MOSAIQUE 163' 2002/2020 Proteksan Tri-Deck Motor Yacht	6
Sun Deck: MOSAIQUE 163' 2002/2020 Proteksan Tri-Deck Motor Yacht	6
Sun Deck: MOSAIQUE 163' 2002/2020 Proteksan Tri-Deck Motor Yacht	7
Sun Deck Lounging: MOSAIQUE 163' 2002/2020 Proteksan Tri-Deck Motor Yacht	7
Sun Deck Exercise: MOSAIQUE 163' 2002/2020 Proteksan Tri-Deck Motor Yacht	7
Bridge Deck Aft: MOSAIQUE 163' 2002/2020 Proteksan Tri-Deck Motor Yacht	7
Bridge Deck Aft: MOSAIQUE 163' 2002/2020 Proteksan Tri-Deck Motor Yacht	7
Bridge Deck Aft: MOSAIQUE 163' 2002/2020 Proteksan Tri-Deck Motor Yacht	7
Bridge Deck Aft Seating: MOSAIQUE 163' 2002/2020 Proteksan Tri-Deck Motor Yacht	8
Main Deck Aft: MOSAIQUE 163' 2002/2020 Proteksan Tri-Deck Motor Yacht	8
Main Salon: MOSAIQUE 163' 2002/2020 Proteksan Tri-Deck Motor Yacht	8
Main Salon: MOSAIQUE 163' 2002/2020 Proteksan Tri-Deck Motor Yacht	8
Main Salon: MOSAIQUE 163' 2002/2020 Proteksan Tri-Deck Motor Yacht	8
Main Salon Game Table: MOSAIQUE 163' 2002/2020 Proteksan Tri-Deck Motor Yacht	8

Dining Room: MOSAIQUE 163' 2002/2020 Proteksan Tri-Deck Motor Yacht	9
Dining Room: MOSAIQUE 163' 2002/2020 Proteksan Tri-Deck Motor Yacht	9
Master Private Salon: MOSAIQUE 163' 2002/2020 Proteksan Tri-Deck Motor Yacht	9
Master Stateroom: MOSAIQUE 163' 2002/2020 Proteksan Tri-Deck Motor Yacht	9
Master Suite: MOSAIQUE 163' 2002/2020 Proteksan Tri-Deck Motor Yacht	9
Master Bathroom: MOSAIQUE 163' 2002/2020 Proteksan Tri-Deck Motor Yacht	9
VIP: MOSAIQUE 163' 2002/2020 Proteksan Tri-Deck Motor Yacht	10
VIP Bathroom: MOSAIQUE 163' 2002/2020 Proteksan Tri-Deck Motor Yacht	10
Guest Stateroom 1 Queen: MOSAIQUE 163' 2002/2020 Proteksan Tri-Deck Motor Yacht	10
Guest Ensuite 1: MOSAIQUE 163' 2002/2020 Proteksan Tri-Deck Motor Yacht	10
Guest Stateroom 2 Queen: MOSAIQUE 163' 2002/2020 Proteksan Tri-Deck Motor Yacht	10
Guest Ensuite 2: MOSAIQUE 163' 2002/2020 Proteksan Tri-Deck Motor Yacht	10
Guest Stateroom 3: MOSAIQUE 163' 2002/2020 Proteksan Tri-Deck Motor Yacht	11
Guest Ensuite 3: MOSAIQUE 163' 2002/2020 Proteksan Tri-Deck Motor Yacht	11
Guest Stateroom 4 Twin: MOSAIQUE 163' 2002/2020 Proteksan Tri-Deck Motor Yacht	11
Guest Ensuite 4: MOSAIQUE 163' 2002/2020 Proteksan Tri-Deck Motor Yacht	11
Sky Lounge: MOSAIQUE 163' 2002/2020 Proteksan Tri-Deck Motor Yacht	11
Skyounge: MOSAIQUE 163' 2002/2020 Proteksan Tri-Deck Motor Yacht	11
Dining Detail: MOSAIQUE 163' 2002/2020 Proteksan Tri-Deck Motor Yacht	12
Dining Detail: MOSAIQUE 163' 2002/2020 Proteksan Tri-Deck Motor Yacht	12
Dining Detail: MOSAIQUE 163' 2002/2020 Proteksan Tri-Deck Motor Yacht	12
MOSAIQUE 163' 2002/2020 Proteksan Tri-Deck Motor Yacht	12
MOSAIQUE 163' 2002/2020 Proteksan Tri-Deck Motor Yacht	12
CONTACTS	13
Contact details	13
Telephones	13
Office hours	13
Address	13

SPECIFICATIONS

Overview

Key Features:

- “Blue Marlin” Exterior Paint Job 2020
- Interior Refresh 2020
- 6 Staterooms for up to 12 Guests
- Full Beam Master Suite
- Huge VIP On Main Deck
- Proven Charter Reputation, Buy a Charter Business
- Light, Bright, Airy, Refreshed Interior Design
- Oversized Windows
- Most Amazing Asssitant and Best Business Partner Ever
- Transatlantic
- Caterpillar Engines Recently Rebuilt
- Quantum Zero Speed Stabilizers
- Lloyds Class (renewed 2021)

Basic Information

Category: Motor Yacht

Sub Category: Mega Yacht

Model Year: 2002

Year Built: 2002

Refit Type: Exterior Paint and Interior Refit

Country: Sint Maarten

Dimensions

LOA: 163' 9" (49.91mm)

Beam: 30.5

Min Draft: 9' 7" (2.92mm)

Max Draft: 9' 7" (2.92mm)

Speed, Capacities and Weight

Cruise Speed: 13 Knots Kts. (15 MPH)

Cruise Speed Range: 4500

Max Speed: 15 Knots Kts. (17 MPH)

Gross Tonnage: 589 Pounds

Water Capacity: 23162 Gallons

Fuel Capacity: 22375.37 Gal Gallons

Accommodations

Total Cabins: 6

Sleeps: 12

Total Heads: 8

Crew Cabin: 12

Crew Berths: 6

Hull and Deck Information

Hull Material: Steel

Deck Material: Teak

Hull Configuration: Full Displacement

Hull Color: Blue

Exterior Designer: Dubois Naval Architects **Interior Designer:** Kristina Ferrand

Engine Information

Engines: 2

Manufacturer: Caterpillar

PHOTOS

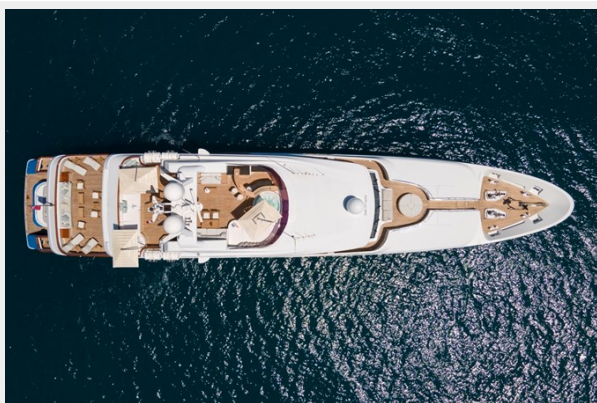
**Profile: MOSAIQUE 163' 2002/2020
Proteksan Tri-Deck Motor Yacht**



**Aft: MOSAIQUE 163' 2002/2020 Proteksan
Tri-Deck Motor Yacht**



**Aerial: MOSAIQUE 163' 2002/2020 Proteksan
Tri-Deck Motor Yacht**



**Jacuzzi: MOSAIQUE 163' 2002/2020
Proteksan Tri-Deck Motor Yacht**



**Sun Deck: MOSAIQUE 163' 2002/2020
Proteksan Tri-Deck Motor Yacht**



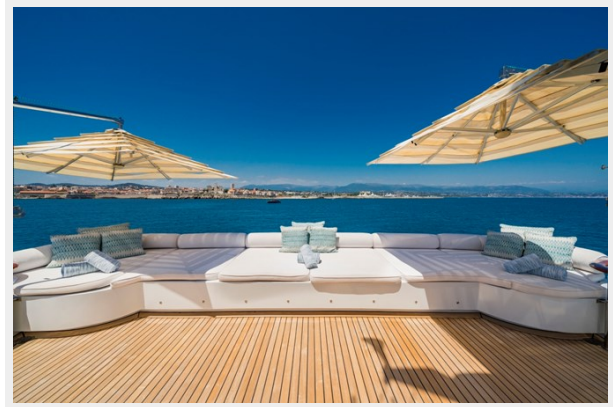
**Sun Deck: MOSAIQUE 163' 2002/2020
Proteksan Tri-Deck Motor Yacht**



**Sun Deck: MOSAIQUE 163' 2002/2020
Proteksan Tri-Deck Motor Yacht**



**Sun Deck Lounging: MOSAIQUE 163'
2002/2020 Proteksan Tri-Deck Motor Yacht**



**Sun Deck Exercise: MOSAIQUE 163'
2002/2020 Proteksan Tri-Deck Motor Yacht**



**Bridge Deck Aft: MOSAIQUE 163' 2002/2020
Proteksan Tri-Deck Motor Yacht**



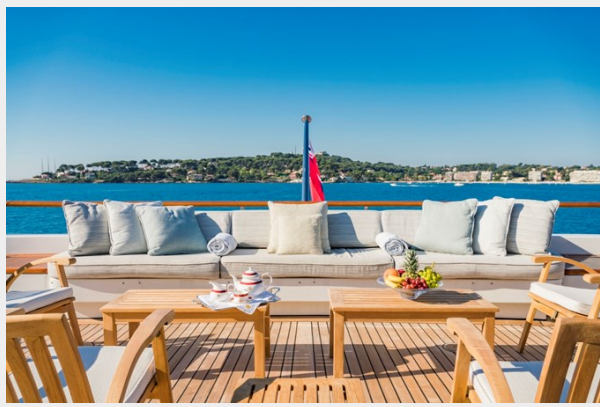
**Bridge Deck Aft: MOSAIQUE 163' 2002/2020
Proteksan Tri-Deck Motor Yacht**



**Bridge Deck Aft: MOSAIQUE 163' 2002/2020
Proteksan Tri-Deck Motor Yacht**



**Bridge Deck Aft Seating: MOSAIQUE 163'
2002/2020 Proteksan Tri-Deck Motor Yacht**



**Main Deck Aft: MOSAIQUE 163' 2002/2020
Proteksan Tri-Deck Motor Yacht**



**Main Salon: MOSAIQUE 163' 2002/2020
Proteksan Tri-Deck Motor Yacht**



**Main Salon: MOSAIQUE 163' 2002/2020
Proteksan Tri-Deck Motor Yacht**



**Main Salon: MOSAIQUE 163' 2002/2020
Proteksan Tri-Deck Motor Yacht**



**Main Salon Game Table: MOSAIQUE 163'
2002/2020 Proteksan Tri-Deck Motor Yacht**



**Dining Room: MOSAIQUE 163' 2002/2020
Proteksan Tri-Deck Motor Yacht**



**Dining Room: MOSAIQUE 163' 2002/2020
Proteksan Tri-Deck Motor Yacht**



**Master Private Salon: MOSAIQUE 163'
2002/2020 Proteksan Tri-Deck Motor Yacht**



**Master Stateroom: MOSAIQUE 163'
2002/2020 Proteksan Tri-Deck Motor Yacht**



**Master Suite: MOSAIQUE 163' 2002/2020
Proteksan Tri-Deck Motor Yacht**



**Master Bathroom: MOSAIQUE 163'
2002/2020 Proteksan Tri-Deck Motor Yacht**



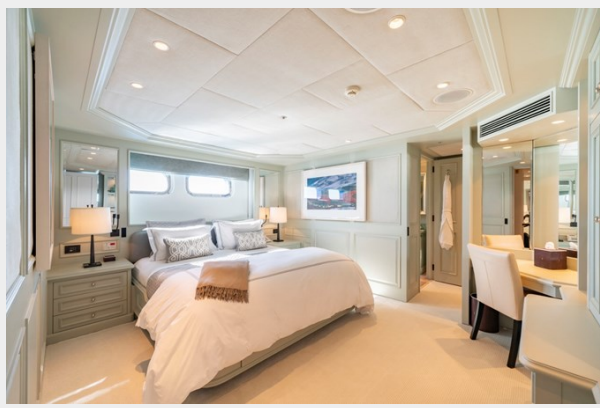
VIP: MOSAIQUE 163' 2002/2020 Proteksan Tri-Deck Motor Yacht



VIP Bathroom: MOSAIQUE 163' 2002/2020 Proteksan Tri-Deck Motor Yacht



Guest Stateroom 1 Queen: MOSAIQUE 163' 2002/2020 Proteksan Tri-Deck Motor Yacht



Guest Ensuite 1: MOSAIQUE 163' 2002/2020 Proteksan Tri-Deck Motor Yacht



Guest Stateroom 2 Queen: MOSAIQUE 163' 2002/2020 Proteksan Tri-Deck Motor Yacht



Guest Ensuite 2: MOSAIQUE 163' 2002/2020 Proteksan Tri-Deck Motor Yacht



**Guest Stateroom 3: MOSAIQUE 163'
2002/2020 Proteksan Tri-Deck Motor Yacht**



**Guest Ensuite 3: MOSAIQUE 163' 2002/2020
Proteksan Tri-Deck Motor Yacht**



**Guest Stateroom 4 Twin: MOSAIQUE 163'
2002/2020 Proteksan Tri-Deck Motor Yacht**



**Guest Ensuite 4: MOSAIQUE 163' 2002/2020
Proteksan Tri-Deck Motor Yacht**



**Sky Lounge: MOSAIQUE 163' 2002/2020
Proteksan Tri-Deck Motor Yacht**



**Skylounge: MOSAIQUE 163' 2002/2020
Proteksan Tri-Deck Motor Yacht**



**Dining Detail: MOSAIQUE 163' 2002/2020
Proteksan Tri-Deck Motor Yacht**



**Dining Detail: MOSAIQUE 163' 2002/2020
Proteksan Tri-Deck Motor Yacht**



**Dining Detail: MOSAIQUE 163' 2002/2020
Proteksan Tri-Deck Motor Yacht**



**MOSAIQUE 163' 2002/2020 Proteksan Tri-
Deck Motor Yacht**



MOSAIQUE 163' 2002/2020 Proteksan Tri-Deck Motor Yacht



CONTACTS

Andrey Shestakov, leading yacht broker of the sales department of Shestakov Yacht Sales Inc. Shestakov Yacht Sales Inc., the official representative of the Miami/Fort Lauderdale FL headquarters.

Contact details

Email: andrey@shestakovyachtsales.com

Web: shestakovyachtsales.com/en/

Telephones

USA: +1(954)274-4435

Office hours

Monday – Saturday: **9:00 - 21:00** EDT

Sunday: **closed**

Address



Harbour Towne Marina, 850 NE 3rd St,
STE 213, Dania, FL 33004