

ELIZABETH RUTH — CUSTOM



Builder: CUSTOM

Year Built: 1991

Model: trawler

Price: \$559,000 USD

Location: United States

LOA: 74' (22.56mm)

Beam: 15.16

Max Draft: 7' 5" (2.26mm)

Cruise Speed: 8 Knots Kts. (9 MPH)

Max Speed: 12 Knots Kts. (14 MPH)

Our experienced yacht broker, Andrey Shestakov, will help you choose and buy a yacht that best suits your needs **Elizabeth Ruth — CUSTOM** from our catalogue. Presently, at Shestakov Yacht Sales Inc., we have a wide variety of yachts available on our sale's list. We also work in close contact with all the big yacht manufacturers from all over the world.

If you would like to buy a yacht **Elizabeth Ruth — CUSTOM** or would like help answering any questions concerning purchasing, selling or chartering a yacht, please call **+1(954)274-4435**

TABLE OF CONTENTS

| | |
|------------------------------|----|
| TABLE OF CONTENTS | 2 |
| SPECIFICATIONS | 4 |
| Basic Information | 4 |
| Dimensions | 4 |
| Speed, Capacities and Weight | 4 |
| Accommodations | 4 |
| Hull and Deck Information | 4 |
| Engine Information | 5 |
| PHOTOS | 6 |
| Aerial - Bow View | 6 |
| Aerial - Portside View | 6 |
| Wheelhouse | 6 |
| Upper Salon Settee | 6 |
| Across from Settee | 6 |
| Galley | 6 |
| Galley | 7 |
| Stairs to lower deck | 7 |
| Lower Salon | 7 |
| Master cabin | 7 |
| Lower Head | 8 |
| Master cabin | 8 |
| Bunk/Office | 8 |
| Foc'sle | 8 |
| Engine Room | 9 |
| Foc'sle | 9 |
| Port Side Main Engine | 9 |
| Starboard Side Main Engine | 9 |
| Port Hull - Hauled Out | 10 |

| | |
|---------------------------------|----|
| Haul Out | 10 |
| Starboard Stern Hull - Haul Out | 10 |
| CONTACTS | 11 |
| Contact details | 11 |
| Telephones | 11 |
| Office hours | 11 |
| Address | 11 |

SPECIFICATIONS

Basic Information

Category: trawler

Sub Category: Long Range Cruiser

Model Year: 1991

Year Built: 1991

Country: United States

Dimensions

LOA: 74' (22.56mm)

LWL: 65' (19.81mm)

Beam: 15.16

Max Draft: 7' 5" (2.26mm)

Speed, Capacities and Weight

Cruise Speed: 8 Knots Kts. (9 MPH)

Max Speed: 12 Knots Kts. (14 MPH)

Water Capacity: 1200 Gallons

Holding Tank: 90 Gal Gallons

Fuel Capacity: 4800 Gal Gallons

Accommodations

Total Cabins: 3

Total Heads: 2

Hull and Deck Information

Hull Material: Steel

Engine Information

Engines: 1

Manufacturer: Caterpillar

Engine Type: Inboard

Fuel Type: Diesel

PHOTOS

Aerial - Bow View



Aerial - Portside View



Wheelhouse



Upper Salon Settee



Across from Settee



Galley



Galley



Stairs to lower deck



Lower Salon



Master cabin



Master cabin



Lower Head



Bunk/Office



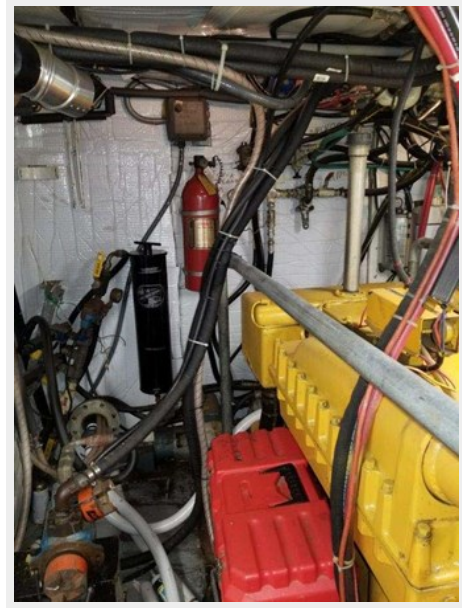
Foc'sle



Foc'sle



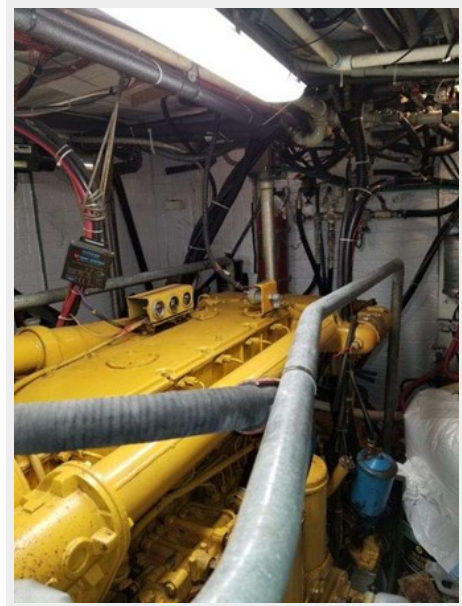
Engine Room



Port Side Main Engine



Starboard Side Main Engine



Port Hull - Hauled Out



Haul Out



Starboard Stern Hull - Haul Out



CONTACTS

Andrey Shestakov, leading yacht broker of the sales department of Shestakov Yacht Sales Inc. Shestakov Yacht Sales Inc., the official representative of the Miami/Fort Lauderdale FL headquarters.

Contact details

Email: andrey@shestakovyachtsales.com

Web: shestakovyachtsales.com/en/

Telephones

USA: +1(954)274-4435

Office hours

Monday – Saturday: **9:00 - 21:00** EDT

Sunday: **closed**

Address



Harbour Towne Marina, 850 NE 3rd St,
STE 213, Dania, FL 33004