

## ASEAN LADY — PRIDE MEGA YACHTS



**Builder:** PRIDE MEGA YACHTS

**Year Built:** 2004

**Model:** Mega Yacht

**Price:** \$15,000,000 USD

**Location:** Malaysia

**LOA:** 289' 3" (88.15mm)

**Beam:** 69.55

**Min Draft:** 11' 6" (3.5mm)

**Cruise Speed:** 12 Knots Kts. (14 MPH)

**Max Speed:** 15 Knots Kts. (17 MPH)

Our experienced yacht broker, Andrey Shestakov, will help you choose and buy a yacht that best suits your needs **ASEAN LADY — PRIDE MEGA YACHTS** from our catalogue. Presently, at Shestakov Yacht Sales Inc., we have a wide variety of yachts available on our sale's list. We also work in close contact with all the big yacht manufacturers from all over the world.

If you would like to buy a yacht **ASEAN LADY — PRIDE MEGA YACHTS** or would like help answering any questions concerning purchasing, selling or chartering a yacht, please call **+1(954)274-4435**

# TABLE OF CONTENTS

TABLE OF CONTENTS	2
SPECIFICATIONS	4
Overview	4
Basic Information	4
Dimensions	4
Speed, Capacities and Weight	4
Accommodations	4
Hull and Deck Information	5
Engine Information	5
PHOTOS	6
Drone Portside	6
Drone Starboard	6
Aft Deck	6
Entrance	6
Grand staircase	6
Lounge and bar	6
Bar	7
KTV	7
Dining width	7
Dining length	7
Galley in	7
Galley out	7
Day Head	8
Spiral staircase	8
Master Bed	8
Wood carving	8
Master Lounge	8
Master Office	8

---

Master Head in	9
Master Head out	9
VIP Suite 1	9
VIP Head 1	9
VIP Suite 2	9
VIP Head 2	9
KING Cabin	10
TWIN Cabin	10
Guest Head 2	10
Parents Cabin connecing	10
Kids Cabin	10
Kids Cabin connecting	10
Bridge	11
Bow Jetski storage	11
Outdoor Upper deck	11
Heli Deck	11
CONTACTS	12
Contact details	12
Telephones	12
Office hours	12
Address	12

---

# SPECIFICATIONS

---

## Overview

---

### Basic Information

---

**Category:** Mega Yacht

**Sub Category:** Mega Yacht

**Model Year:** 2004

**Year Built:** 2004

**Country:** Malaysia

### Dimensions

---

**LOA:** 289' 3" (88.15mm)

**Beam:** 69.55

**Min Draft:** 11' 6" (3.5mm)

### Speed, Capacities and Weight

---

**Cruise Speed:** 12 Knots Kts. (14 MPH)

**Cruise Speed Range:** 10000

**Max Speed:** 15 Knots Kts. (17 MPH)

**Gross Tonnage:** 2385 Pounds

**Water Capacity:** 99600 Gallons

**Fuel Capacity:** 67812.97 Gal Gallons

### Accommodations

---

**Total Cabins:** 8

**Sleeps:** 18

**Total Heads:** 10

**Crew Cabin:** 18

---

## Hull and Deck Information

---

**Hull Material:** Steel

**Deck Material:** Teak and Steel

**Hull Configuration:** Full Displacement

**Hull Color:** White

**Hull Designer:** Ian Mitchell

**Exterior Designer:** Ian Mitchell

**Interior Designer:** Anne Chang

---

## Engine Information

---

**Engines:** 2

**Manufacturer:** Caterpillar

**Engine Type:** Inboard

**Fuel Type:** Diesel

# PHOTOS

**Drone Portside**



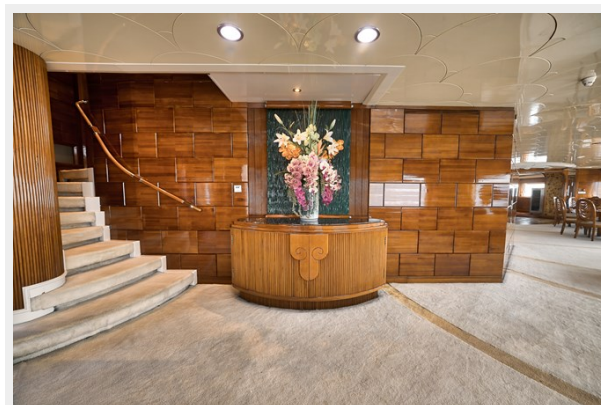
**Drone Starboard**



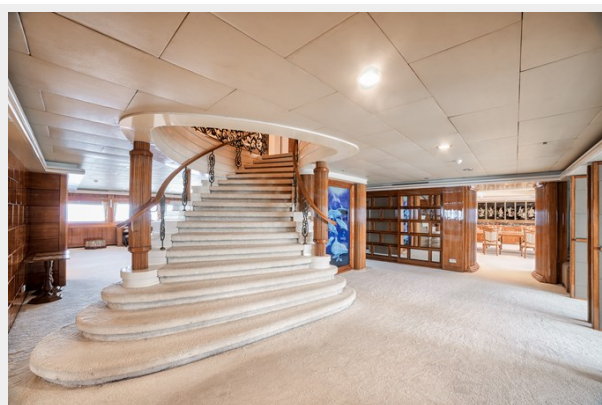
**Aft Deck**



**Entrance**



**Grand staircase**



**Lounge and bar**



**Bar**



**KTV**



**Dining width**



**Dining length**



**Galley in**



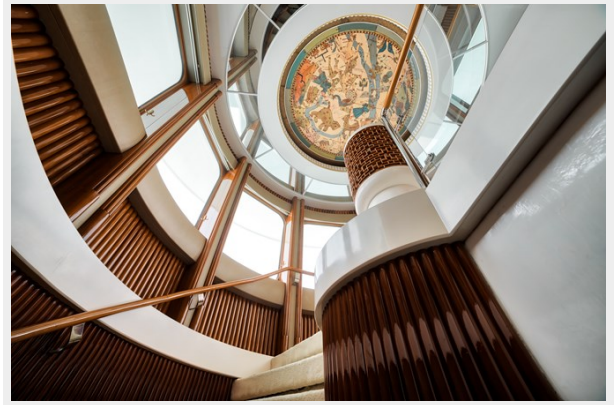
**Galley out**



**Day Head**



**Spiral staircase**



**Wood carving**



**Master Bed**



**Master Lounge**



**Master Office**





**Master Head in**



**Master Head out**



**VIP Suite 1**



**VIP Head 1**



**VIP Suite 2**



**VIP Head 2**



**KING Cabin**



**TWIN Cabin**



**Guest Head 2**



**Parents Cabin connecting**



**Kids Cabin**



**Kids Cabin connecting**



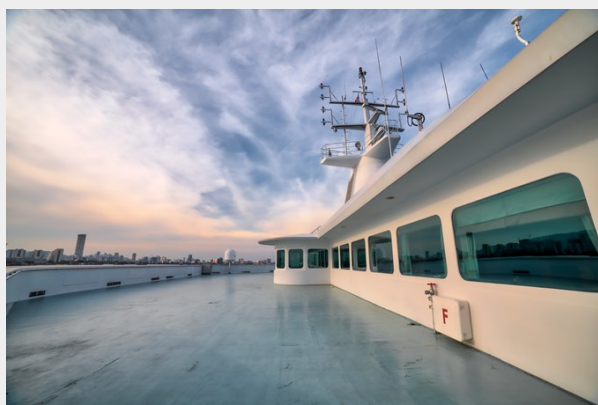
**Bridge**



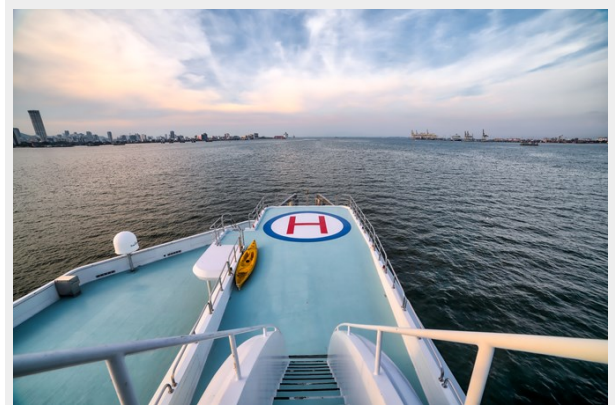
**Bow Jetski storage**



**Outdoor Upper deck**



**Heli Deck**



---

# CONTACTS

---

Andrey Shestakov, leading yacht broker of the sales department of Shestakov Yacht Sales Inc. Shestakov Yacht Sales Inc., the official representative of the Miami/Fort Lauderdale FL headquarters.

---

## Contact details

---

Email: [andrey@shestakovyachtsales.com](mailto:andrey@shestakovyachtsales.com)

Web: [shestakovyachtsales.com/en/](http://shestakovyachtsales.com/en/)

---

## Telephones

---

USA: +1(954)274-4435

---

## Office hours

---

Monday – Saturday: **9:00 - 21:00** EDT

Sunday: **closed**

---

## Address

---



Harbour Towne Marina, 850 NE 3rd St,  
STE 213, Dania, FL 33004