

# SERENITY — CANTIERE DELLE MARCHE



**Builder:** CANTIERE DELLE MARCHE

**Year Built:** 2013

**Model:** Motor Yacht

**Price:** PRICE ON APPLICATION

**Location:** Greece

**LOA:** 96' 10" (29.49mm)

**Beam:** 24.37

**Max Draft:** 9' (2.74mm)

**Max Speed:** 13.5 Knots Kts. (16 MPH)

Our experienced yacht broker, Andrey Shestakov, will help you choose and buy a yacht that best suits your needs **SERENITY — CANTIERE DELLE MARCHE** from our catalogue. Presently, at **Shestakov Yacht Sales Inc.**, we have a wide variety of yachts available on our sale's list. We also work in close contact with all the big yacht manufacturers from all over the world.

If you would like to buy a yacht **SERENITY — CANTIERE DELLE MARCHE** or would like help answering any questions concerning purchasing, selling or chartering a yacht, please call **+1(954)274-4435**

# TABLE OF CONTENTS

TABLE OF CONTENTS	2
SPECIFICATIONS	6
Overview	6
Basic Information	6
Dimensions	6
Speed, Capacities and Weight	7
Accommodations	7
Hull and Deck Information	7
Engine Information	7
PHOTOS	8
IMG_5813	8
WhatsApp Image 2021-02-02 at 14.39.12 (6)	8
WhatsApp Image 2021-02-02 at 14.39.13 (1)	8
12	8
DarwinOutsideshoot-1619599192_1619601959_01973_e7f2e52	8
02	8
DarwinOutsideshoot-1619599192_1619601946_01959_49a0def	9
serenityexterior-1615976900_1615977162_77169_4185bc1	9
serenityexterior-1615976900_1615977189_77196_409b6a9	9
serenityexterior-1615976900_1615977196_77203_98e8a06	9
serenityexterior-1615976900_1615977213_77220_b432221	9
serenityexterior-1615976900_1615977269_77476_b005a85	9
serenityexterior-1615976900_1615977486_77496_1f07191	10
serenityexterior-1615976900_1615977220_77228_62f5fe4	10
serenityexterior-1615976900_1615977522_77529_86b8e07	10
serenityexterior-1615976900_1615977497_77512_6c5e9b3	10
serenityexterior-1615976900_1615982835_82841_1c2af3c	10
serenityexterior-1615976900_1615982743_82750_8f90071	10

serenityexterior-1615976900_1615982760_82767_054441e	11
serenityexterior-1615976900_1615982728_82735_7dbc8f8	11
serenityexterior-1615976900_1615982543_82728_88344b7	11
serenityexterior-1615976900_1615982783_82790_cc7a5aa	11
serenityexterior-1615976900_1615982767_82773_c153c62	11
serenityexterior-1615976900_1615978057_78063_0a62f97	11
DarwinOutsideshoot-1619599192_1619600040_00054_f4b43cc	12
DarwinOutsideshoot-1619599192_1619600115_00143_31d9b34	12
DarwinOutsideshoot-1619599192_1619600163_00177_6c7fe32	12
serenityexterior-1615976900_1615977612_77619_d3ad2cb	12
serenityexterior-1615976900_1615977619_77626_9cc1ab7	13
serenityexterior-1615976900_1615977713_77731_30a50f8	13
serenityexterior-1615976900_1615978019_78027_4e8c65e	13
serenityexterior-1615976900_1615978027_78034_44f1baf	13
DarwinOutsideshoot-1619599192_1619600144_00152_59b2777	13
DarwinOutsideshoot-1619599192_1619600153_00163_12ebe57	13
serenityexterior-1615976900_1615977739_77747_4cc505a	14
serenityexterior-1615976900_1615977832_77842_b78aaf5	14
DarwinOutsideshoot-1619599192_1619600100_00115_3667126	14
serenityexterior-1615976900_1615977789_77803_be30778	14
Darwin-1614155305_1614157132_57173_a4005c5	15
10 (2)	15
Darwin-1614155305_1614157205_57223_15f77a4	15
DarwinOutsideshoot-1619599192_1619603668_03679_99507ec	15
DarwinOutsideshoot-1619599192_1619603705_03719_f93dea1	16
Darwin-1614155305_1614157223_57252_5697d09	16
09	16
06	16
Darwin-1614155305_1614245669_45687_2f3cf61	16

Serenity_s2_extracted-picture	16
Darwin-1614155305_1614245688_45702_e639285	17
Darwin-1614155305_1614245703_45719_c0202d7	17
Darwin-1614155305_1614245766_45781_fae6699	17
Darwin-1614155305_1614157411_57433_7124d2a	17
Darwin-1614155305_1614245747_45766_7a1e229	18
Darwin-1614155305_1614157320_57354_fedaa4e	18
19	18
17 (1)	18
Darwin-1614155305_1614157517_57587_31e223e	18
15 (1)	18
Darwin-1614155305_1614157608_57630_75522f1	19
Darwin-1614155305_1614244229_44262_71e605d	19
Darwin-1614155305_1614244262_44277_9c62fce	19
Darwin-1614155305_1614244277_44294_c8d3f4f	19
Darwin-1614155305_1614158043_58071_e46b17c	20
Darwin-1614155305_1614158518_58544_4d53e3e	20
Darwin-1614155305_1614244294_44312_7e336f8	20
Darwin-1614155305_1614244312_44339_8808112	20
Darwin-1614155305_1614245068_45082_279938f	21
Darwin-1614155305_1614246429_46441_eb22fc8	21
Darwin-1614155305_1614246702_46716_7f59663	21
Darwin-1614155305_1614246716_46734_ef9d98a	21
03 (3)	21
01 (2)	21
Darwin-1614155305_1614247890_47906_e4a8789	22
02 (2)	22
Darwin-1614155305_1614247907_47928_7b445a3	22
Darwin-1614155305_1614248000_48013_51d11b5	22

---

Darwin-1614155305_1614250004_50026_36762a8	23
WhatsApp Image 2021-02-02 at 14.39.12 (5)	23
CONTACTS	24
Contact details	24
Telephones	24
Office hours	24
Address	24

# SPECIFICATIONS

---

## Overview

---

**Major Refit 2020 - In excess of 1M Euro - Refit Works List Available - Upgraded to Commercial Code Maltese Flag standards.**

New upper deck 2m diameter round custom teak deck table with custom furniture - New sky lounge bar and BBQ area - all new interior including linen and bedding etc - fully serviced and maintained all main and auxiliary engineering systems - New 2021 tender custom made with 50 knots speed - 0 engine hrs - and many more.

Built for a very experienced Owner, MY Serenity is a three-deck steel and aluminum Explorer vessel of 229 GT, an exceptional volume for a 100' yacht. Belonging to the Darwin Class range, nowadays counting 11 vessels sold in just 6 years, M/Y Serenity is designed for serious cruising: extra-thick steel plates, cupro nickel piping, remote controlled valves, automatic parallel device for gensets' management, commercial ships' treatment systems for bilge, black and grey water, heavy duty rated engines MTU 8V 2000 M72/720 Kw.

Range of 4.500 nm at 10 knots, maximum speed of 13 knots. Sea worthiness and seakeeping capabilities are unrivalled as well as comfort at anchor and in navigation. Accommodation for 10 guests in 4 staterooms with up to 5 crews including Captain in three cabins. Classic contemporary very voluminous interiors (2.10 mt height in every ambient), spacious garage able to store several water toys and equipment, 50 sq mt sundeck and ample sunbathing area on the foredeck make MY Serenity fit both the explorers' souls as well as the ones looking for action and social life.

Contact us for an exclusive presentation.

## Basic Information

---

**Category:** Motor Yacht

**Sub Category:** Expedition/Explorer

**Model Year:** 2013

**Year Built:** 2013

**Refit Type:** Major Refit

**Country:** Greece

## Dimensions

---

**LOA:** 96' 10" (29.49mm)

**Beam:** 24.37

**Max Draft:** 9' (2.74mm)

---

## Speed, Capacities and Weight

---

**Max Speed:** 13.5 Knots Kts. (16 MPH)    **Water Capacity:** 6000 Gallons

**Holding Tank:** 792.52 Gal Gallons    **Fuel Capacity:** 10566.88 Gal Gallons

---

## Accommodations

---

**Total Cabins:** 4

**Total Berths:** 10

**Crew Cabin:** 6

---

## Hull and Deck Information

---

**Hull Material:** Steel

---

## Engine Information

---

**Engines:** 2

**Manufacturer:** MTU

**Fuel Type:** Diesel

# PHOTOS

**IMG\_5813**



**WhatsApp Image 2021-02-02 at 14.39.12  
(6)**



**WhatsApp Image 2021-02-02 at 14.39.13  
(1)**



**12**



**02**



**DarwinOutsideshoot-  
1619599192\_1619601959\_01973\_e7f2e52**





**DarwinOutsideshoot-  
1619599192\_1619601946\_01959\_49a0def**



**serenityexterior-  
1615976900\_1615977162\_77169\_4185bc1**



**serenityexterior-  
1615976900\_1615977189\_77196\_409b6a9** **serenityexterior-  
1615976900\_1615977196\_77203\_98e8a06**



**serenityexterior-  
1615976900\_1615977213\_77220\_b432221** **serenityexterior-  
1615976900\_1615977269\_77476\_b005a85**



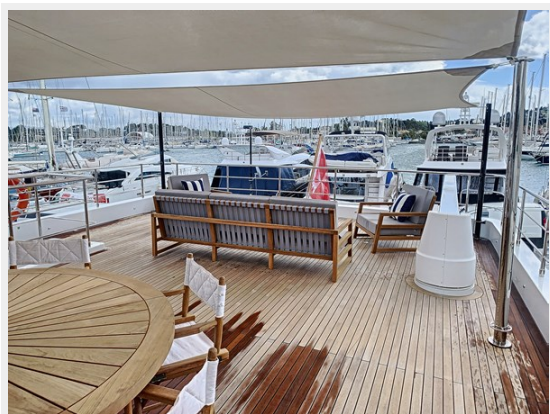
**serenityexterior-  
1615976900\_1615977486\_77496\_1f07191 1615976900\_1615977220\_77228\_62f5fe4**



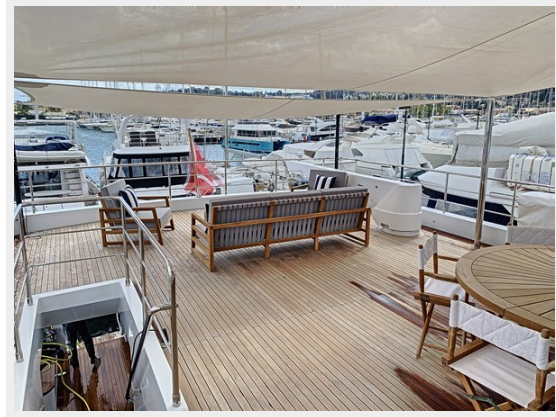
**serenityexterior-  
1615976900\_1615977522\_77529\_86b8e07 1615976900\_1615977497\_77512\_6c5e9b3**



**serenityexterior-  
1615976900\_1615982835\_82841\_1c2af3c 1615976900\_1615982743\_82750\_8f90071**



**serenityexterior-  
1615976900\_1615982760\_82767\_054441e 1615976900\_1615982728\_82735\_7dbc8f8**



**serenityexterior-  
1615976900\_1615982543\_82728\_88344b7 1615976900\_1615982783\_82790\_cc7a5aa**



**serenityexterior-  
1615976900\_1615982767\_82773\_c153c62 1615976900\_1615978057\_78063\_0a62f97**



**DarwinOutsideshoot-  
1619599192\_1619600040\_00054\_f4b43cc 1619599192\_1619600115\_00143\_31d9b34**



**DarwinOutsideshoot-  
1619599192\_1619600163\_00177\_6c7fe32**



**serenityexterior-  
1615976900\_1615977612\_77619\_d3ad2cb**



**serenityexterior-**  
**1615976900\_1615977619\_77626\_9cc1ab7 1615976900\_1615977713\_77731\_30a50f8**



**serenityexterior-**  
**1615976900\_1615978019\_78027\_4e8c65e 1615976900\_1615978027\_78034\_44f1baf**



**DarwinOutsideshoot-**  
**1619599192\_1619600144\_00152\_59b2777 1619599192\_1619600153\_00163\_12ebe57**



**serenityexterior-**  
**1615976900\_1615977739\_77747\_4cc505a 1615976900\_1615977832\_77842\_b78aaf5**



**DarwinOutsideshoot-**  
**1619599192\_1619600100\_00115\_3667126**

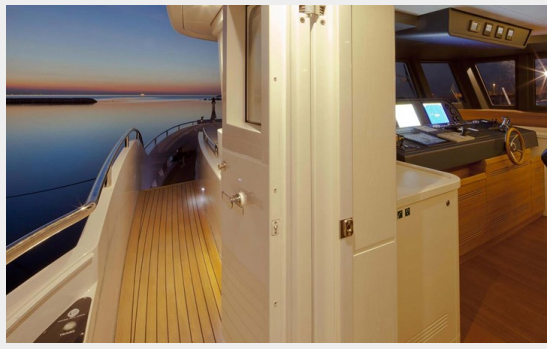


**serenityexterior-**  
**1615976900\_1615977789\_77803\_be30778**



**Darwin-**  
**1614155305\_1614157132\_57173\_a4005c5**

**10 (2)**



**Darwin-** **DarwinOutsideshoot-**  
**1614155305\_1614157205\_57223\_15f77a4 1619599192\_1619603668\_03679\_99507ec**



**DarwinOutsideshoot-  
1619599192\_1619603705\_03719\_f93dea1 1614155305\_1614157223\_57252\_5697d09**



**06**



**09**



**Darwin-  
1614155305\_1614245669\_45687\_2f3cf61**

**Serenity\_s2\_extracted-picture**





**Darwin-**

**1614155305\_1614245688\_45702\_e639285 1614155305\_1614245703\_45719\_c0202d7**



**Darwin-**

**1614155305\_1614245766\_45781\_fae6699 1614155305\_1614157411\_57433\_7124d2a**



**Darwin-**  
**1614155305\_1614245747\_45766\_7a1e229 1614155305\_1614157320\_57354\_fedaa4e**



**19**



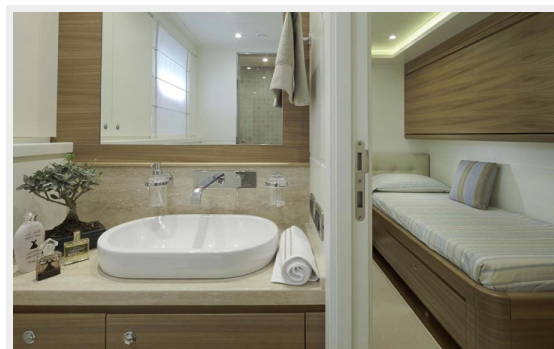
**17 (1)**



**Darwin-**  
**1614155305\_1614157517\_57587\_31e223e**



**15 (1)**



**Darwin-**

**1614155305\_1614157608\_57630\_75522f1 1614155305\_1614244229\_44262\_71e605d**



**Darwin-**

**1614155305\_1614244262\_44277\_9c62fce 1614155305\_1614244277\_44294\_c8d3f4f**



**Darwin-**

**1614155305\_1614158043\_58071\_e46b17c 1614155305\_1614158518\_58544\_4d53e3e**



**Darwin-**

**1614155305\_1614244294\_44312\_7e336f8 1614155305\_1614244312\_44339\_8808112**

**Darwin-**

**1614155305\_1614244294\_44312\_7e336f8 1614155305\_1614244312\_44339\_8808112**



**Darwin-**



**Darwin-**  
**1614155305\_1614245068\_45082\_279938f 1614155305\_1614246429\_46441\_eb22fc8**



**Darwin-**  
**1614155305\_1614246702\_46716\_7f59663 1614155305\_1614246716\_46734\_ef9d98a**



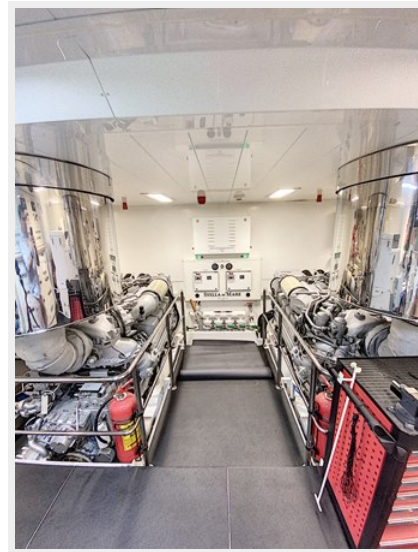
**03 (3)**

**01 (2)**



**Darwin-**  
**1614155305\_1614247890\_47906\_e4a8789**

**02 (2)**



**Darwin-** **1614155305\_1614247907\_47928\_7b445a3** **Darwin-** **1614155305\_1614248000\_48013\_51d11b5**



**Darwin-**  
**1614155305\_1614250004\_50026\_36762a8**



**WhatsApp Image 2021-02-02 at 14.39.12**  
**(5)**



# CONTACTS

---

Andrey Shestakov, leading yacht broker of the sales department of Shestakov Yacht Sales Inc. Shestakov Yacht Sales Inc., the official representative of the Miami/Fort Lauderdale FL headquarters.

## Contact details

---

Email: **andrey@shestakovyachtsales.com**

Web: [shestakovyachtsales.com/en/](http://shestakovyachtsales.com/en/)

## Telephones

---

USA: **+1(954)274-4435**

## Office hours

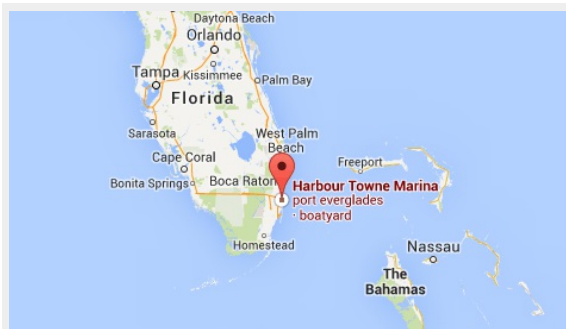
---

Monday – Saturday: **9:00 - 21:00 EDT**

Sunday: **closed**

## Address

---



Harbour Towne Marina, 850 NE 3rd St, STE 213, Dania, FL 33004