

MERCURY — AMELS



Builder: [AMELS](#)

Year Built: 2001

Model: Mega Yacht

Price: €13,500,000 EUR

Location: Croatia

LOA: 163' 9" (49.9m)

Beam: 29.52

Min Draft: 9' 11" (3m)

Cruise Speed: 12 Knots Kts. (14 MPH)

Max Speed: 14 Knots Kts. (16 MPH)

Our experienced yacht broker, Andrey Shestakov, will help you choose and buy a yacht that best suits your needs **MERCURY — AMELS** from our catalogue. Presently, at Shestakov Yacht Sales Inc., we have a wide variety of yachts available on our sale's list. We also work in close contact with all the big yacht manufacturers from all over the world.

If you would like to buy a yacht **MERCURY — AMELS** or would like help answering any questions concerning purchasing, selling or chartering a yacht, please call **+1(954)274-4435**

TABLE OF CONTENTS

TABLE OF CONTENTS	2
SPECIFICATIONS	4
Overview	4
Basic Information	4
Dimensions	4
Speed, Capacities and Weight	5
Accommodations	5
Hull and Deck Information	5
Engine Information	5
PHOTOS	6
Mercury	6
Amels 50MAMELS 50m	6
Bridge Deck Aft -2	6
Mercury-2	6
Bridge Deck Aft	6
Bridge Deck Salon	6
Bridge Deck Salon	7
Dining	7
Main Deck aft	7
Main Deck aft.2	7
Main Salon	7
Main Salon	7
Twin	8
Twin en-suite	8
VIP Bathroom	8
VIP	8
VIP - 2	8
Sundeck	8

Sundeck aft	9
Sundeck frd	9
Sundeck Jacuzzi	9
Owners	9
Owners 2	9
Owners Bathroom	9
Bridge	10
Pantry on Bridge Deck	10
Engine Room 2	10
Engine Room	10
CONTACTS	11
Contact details	11
Telephones	11
Office hours	11
Address	11

SPECIFICATIONS

Overview

2001 Amels 50 m

Built at the world-famous AMELS shipyard in 2001, this 50-metre superyacht reflects the typical high-quality construction from this Dutch builder. With a Gross Tonnage of 613 GT, the interior volumes are substantial when compared to most 50-meter yachts.

In class to Lloyd's 100A1 SSC Yacht mono G6 LMC UMS.

On three substantial decks there are lounge areas with seating and dining areas, large sun pads, lounge chairs, a Jacuzzi and a bar.

The interior refit was completed in 2006 by the Reymond Langton Studio, which still feels very contemporary. There is accommodation for 12 guests and 12 crew including the captain's cabin on the bridge deck plus a 6th Nanny cabin on the main deck.

The yacht has had many recent upgrades and has always been kept in Class and has been professionally managed by EXPERSEA for over 10 years. The yacht has an excellent charter record and is very sought after on the charter market.

Full E-brochure including photographs of non-guest areas available upon request.

All photos are from 2022 / 2023 - video September 2023.

Basic Information

Category: Mega Yacht

Sub Category: Mega Yacht

Model Year: 2001

Year Built: 2001

Country: Croatia

Dimensions

LOA: 163' 9" (49.9mm)

Beam: 29.52

Min Draft: 9' 11" (3mm)

Speed, Capacities and Weight

Cruise Speed: 12 Knots Kts. (14 MPH)

Cruise Speed Range: 3186

Max Speed: 14 Knots Kts. (16 MPH)

Max Speed Range: 2955 Kts.

Gross Tonnage: 613 Pounds

Water Capacity: 4600 Gallons

Fuel Capacity: 25100 Gal Gallons

Accommodations

Total Cabins: 5

Total Berths: 12

Sleeps: 12

Crew Cabin: 12

Crew Berths: 12

Hull and Deck Information

Hull Material: Steel

Hull Configuration: Full Displacement

Hull Color: White

Hull Designer: Reymond Langton

Exterior Designer: Amels

Interior Designer: Reymond Langton (2006)

Engine Information

Engines: 2

Manufacturer: Cummins

Engine Type: Inboard

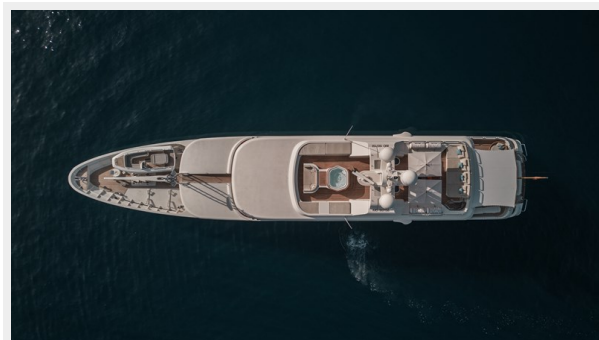
Fuel Type: Diesel

PHOTOS

Mercury



Amels 50MAMELS 50m



Mercury-2



Bridge Deck Aft -2



Bridge Deck Aft



Bridge Deck Salon



Bridge Deck Salon



Dining



Main Deck aft



Main Deck aft.2



Main Salon



Main Salon



Twin



Twin en-suite



VIP Bathroom



VIP



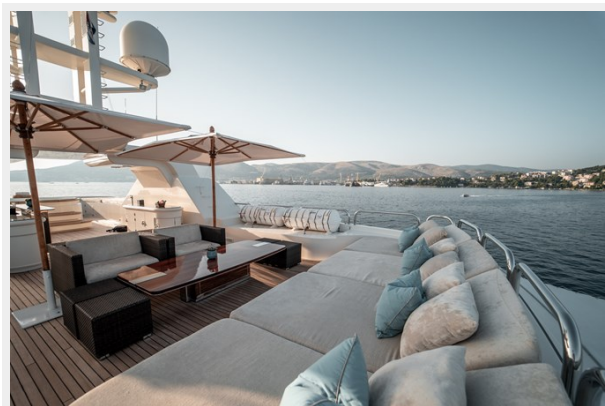
VIP - 2



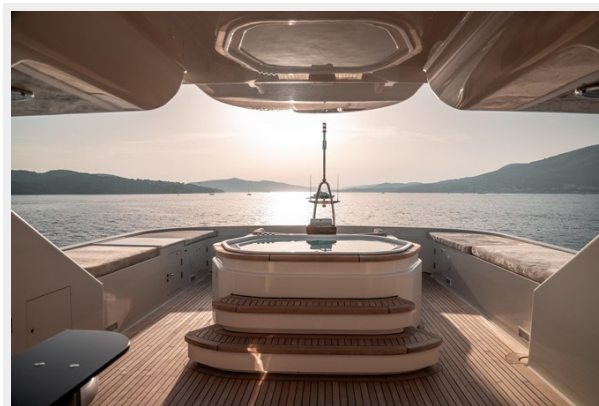
Sundeck



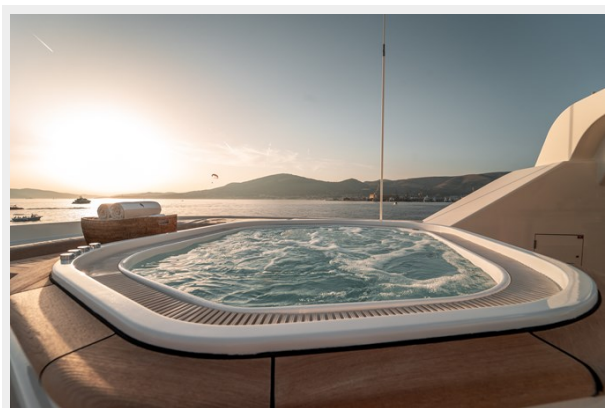
Sundeck aft



Sundeck frd



Sundeck Jacuzzi



Owners



Owners 2



Owners Bathroom



Bridge



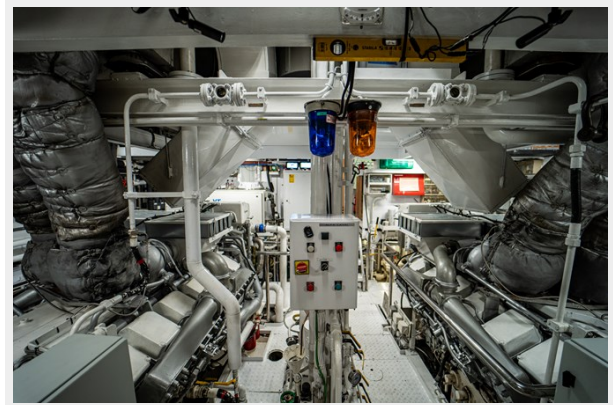
Pantry on Bridge Deck



Engine Room 2



Engine Room



CONTACTS

Andrey Shestakov, leading yacht broker of the sales department of Shestakov Yacht Sales Inc. Shestakov Yacht Sales Inc., the official representative of the Miami/Fort Lauderdale FL headquarters.

Contact details

Email: andrey@shestakovyachtsales.com

Web: shestakovyachtsales.com/en/

Telephones

USA: +1(954)274-4435

Office hours

Monday – Saturday: **9:00 - 21:00** EDT

Sunday: **closed**

Address



Harbour Towne Marina, 850 NE 3rd St,
STE 213, Dania, FL 33004