

NEVER SAY NEVER — CARVER VOYAGER



Builder: CARVER VOYAGER

Year Built: 2006

Model: Motor Yacht

Price: PRICE ON APPLICATION

LOA: 56' (17.07mm)

Beam: 15.33

Max Draft: 4' 9" (1.45mm)

Cruise Speed: 24 Knots Kts. (28 MPH)

Our experienced yacht broker, Andrey Shestakov, will help you choose and buy a yacht that best suits your needs **Never Say Never — CARVER VOYAGER** from **our catalogue**. Presently, at **Shestakov Yacht Sales Inc.**, we have a wide variety of yachts available on **our sale's list**. We also work in close contact with all the big **yacht manufacturers** from all over the world.

If you would like to buy a yacht **Never Say Never — CARVER VOYAGER** or would like help answering any questions concerning purchasing, selling or chartering a yacht, please call **+1(954)274-4435**

TABLE OF CONTENTS

TABLE OF CONTENTS	2
SPECIFICATIONS	5
Overview	5
Basic Information	5
Dimensions	5
Speed, Capacities and Weight	5
Accommodations	6
Hull and Deck Information	6
Engine Information	6
PHOTOS	7
2	7
3	7
4	7
5	7
6	7
7	7
8	8
9	8
10	8
11	8
12	8
13	8
14	9
15	9
16	9
17	9
18	9
19	9

20	10
21	10
22	10
23	10
24	10
25	10
26	11
27	11
28	11
29	11
30	11
31	11
32	12
33	12
34	12
35	12
36	12
37	12
38	13
39	13
40	13
41	13
42	13
43	13
44	14
45	14
46	14
47	14
48	14

49	14
50	15
51	15
52	15
53	15
54	15
55	15
56	16
57	16
CONTACTS	17
Contact details	17
Telephones	17
Office hours	17
Address	17

SPECIFICATIONS

Overview

***"A STRIKING YACHT DESIGNED FOR EXTENDED CRUISING IN COMFORT AND SECURITY"* PowerBoat Guide**

Never Say Never is a beautiful and well-equipped **Carver 56 Voyager Pilothouse!** Powered by twin **Volvo D-12 Diesels** her long list of features includes Bow and Stern Thrusters, a Hydraulic Swim Platform AND a 600# Davit on the Bridge Deck, a Bridge Hard-Top with Excellent Enclosure Curtains, Reverse Cycle Bridge HVAC, an Aft Docking Station, Upgraded Granite Countertops and More!

Please check the FULL SPECS for more detailed information and contact us for more details! Let's schedule an appointment for you to see her for yourself!

A Hard-Body Dinghy with Outboard is also available but is not included in this offering.

Basic Information

Category: Motor Yacht

Sub Category: Pilothouse

Model Year: 2006

Year Built: 2006

Dimensions

LOA: 56' (17.07mm)

Beam: 15.33

Max Draft: 4' 9" (1.45mm)

Speed, Capacities and Weight

Cruise Speed: 24 Knots Kts. (28 MPH) **Water Capacity:** 200 Gallons

Holding Tank: 100 Gal Gallons

Fuel Capacity: 800 Gal Gallons

Accommodations

Total Cabins: 3

Total Heads: 2

Hull and Deck Information

Hull Material: Fiberglass

Engine Information

Engines: 2

Manufacturer: Volvo

Engine Type: Inboard

Fuel Type: Diesel

PHOTOS

2



3



4



5



6



7



8



9



10



11



12



13



14



15



16



17



18



19



20



21



22



23



24



25



26



27



28



29



30



31



32



33



34



35



36



37



38



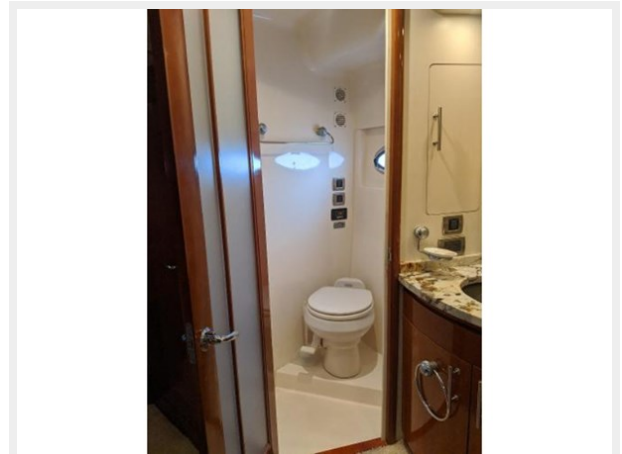
39



40



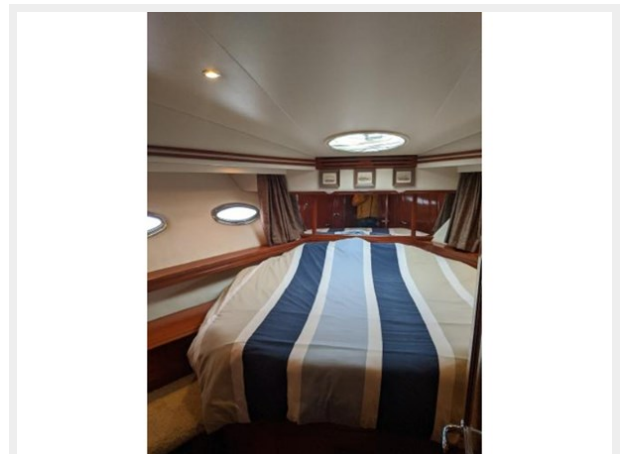
41



42



43



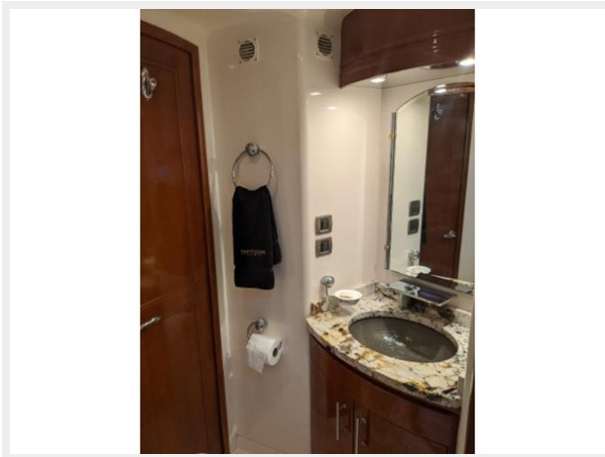
44



45



46



47



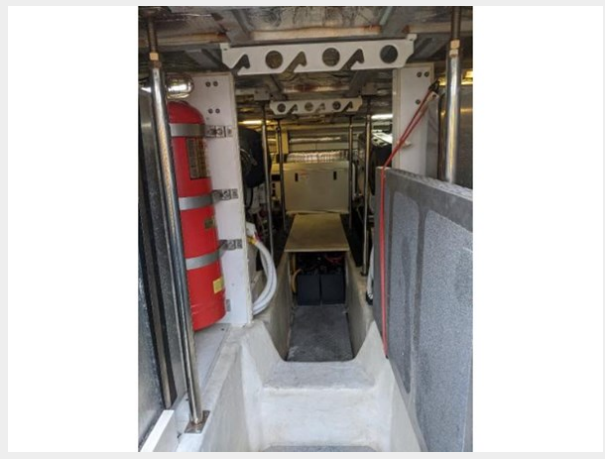
48



49



50



51



52



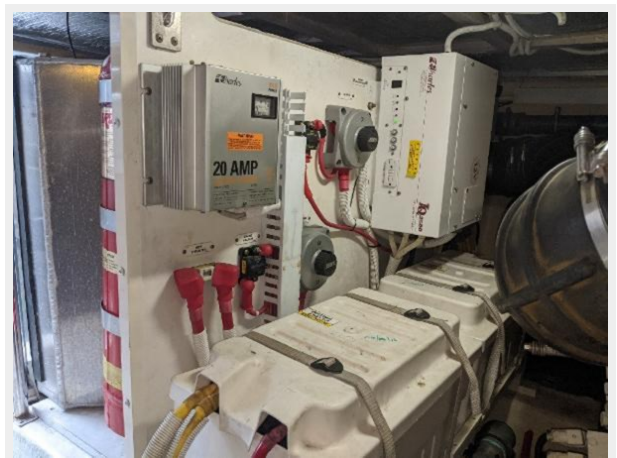
53



54



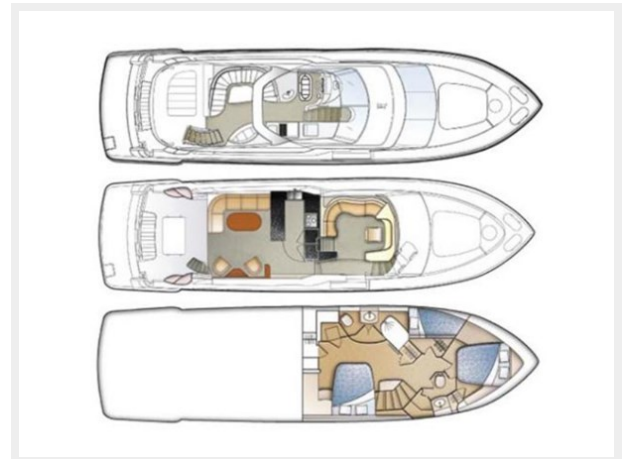
55



56



57



CONTACTS

Andrey Shestakov, leading yacht broker of the sales department of Shestakov Yacht Sales Inc. Shestakov Yacht Sales Inc., the official representative of the Miami/Fort Lauderdale FL headquarters.

Contact details

Email: **andrey@shestakovyachtsales.com**

Web: shestakovyachtsales.com/en/

Telephones

USA: **+1(954)274-4435**

Office hours

Monday – Saturday: **9:00 - 21:00** EDT

Sunday: **closed**

Address



Harbour Towne Marina, 850 NE 3rd St, STE 213, Dania, FL 33004