

EL GUAJIRO — PRINCESS YACHTS



Builder: PRINCESS YACHTS

Year Built: 2017

Model: Motor Yacht

Price: PRICE ON APPLICATION

Location: Spain

LOA: 115' 4" (35.15m)

Beam: 23.95

Max Draft: 7' 2" (2.18m)

Cruise Speed: 16 Knots Kts. (18 MPH)

Max Speed: 22 Knots Kts. (25 MPH)

Our experienced yacht broker, Andrey Shestakov, will help you choose and buy a yacht that best suits your needs El Guajiro — PRINCESS YACHTS from our catalogue. Presently, at Shestakov Yacht Sales Inc., we have a wide variety of yachts available on our sale's list. We also work in close contact with all the big yacht manufacturers from all over the world.

If you would like to buy a yacht El Guajiro — PRINCESS YACHTS or would like help answering any questions concerning purchasing, selling or chartering a yacht, please call +1(954)274-4435

TABLE OF CONTENTS

TABLE OF CONTENTS	2
SPECIFICATIONS	3
Overview	3
Basic Information	3
Dimensions	3
Speed, Capacities and Weight	4
Accommodations	4
Hull and Deck Information	4
Engine Information	4
PHOTOS	5
CONTACTS	16
Contact details	16
Telephones	16
Office hours	16
Address	16

SPECIFICATIONS

Overview

EL GUAJIRO is part of the award-winning Princess 35M range of yachts. Originally delivered in 2017, she was the star of the show of the 2018 Dusseldorf boat show and also featured in the Princess M Class marketing campaign of 2017/18. She has a fantastic volume for the size, with a GT of 248 and superb exterior deck spaces, this is a yacht that feels bigger in most areas when compared to others in the same class. A yacht that would work equally as well as a private vessel or as a charter yacht. With elegant exterior lines and a light and fresh interior from the Princess Design Studio based in Mayfair, EL GUAJIRO will stand the test of time for many years to come. Having only been used lightly for private use since delivery and having been maintained to a great standard by the crew, she is a yacht that a new owner can step straight in to and use from day one.

KEY FEATURES:

- Originally built to comply with MCA LY3 (Short range)
- Sliding doors with folding balconies fitted both sides of the saloon
- Fresh and light interior design
- Convertible lower deck suite between one full beam and two double cabins
- MTU EPC extended warranty until end of March 2022

Basic Information

Category: Motor Yacht

Sub Category: Semi-Displacement

Model Year: 2017

Year Built: 2017

Country: Spain

Dimensions

LOA: 115' 4" (35.15mm)

Beam: 23.95

Max Draft: 7' 2" (2.18mm)

Speed, Capacities and Weight

Cruise Speed: 16 Knots Kts. (18 MPH)

Max Speed: 22 Knots Kts. (25 MPH)

Gross Tonnage: 248 Pounds

Water Capacity: 3304 Gallons

Holding Tank: 269.19 Gal Gallons

Fuel Capacity: 4786.53 Gal Gallons

Accommodations

Total Cabins: 4

Total Berths: 8

Sleeps: 8

Total Heads: 6

Crew Cabin: 5

Crew Berths: 5

Crew Heads: 3

Hull and Deck Information

Hull Material: GRP

Hull Configuration: Semi-Displacement

Hull Color: AWLCRAFT 2000 Princess
white

Hull Designer: Olesinski

Exterior Designer: Olesinski/Princess
Yachts Ltd

Interior Designer: Princess Design Studio

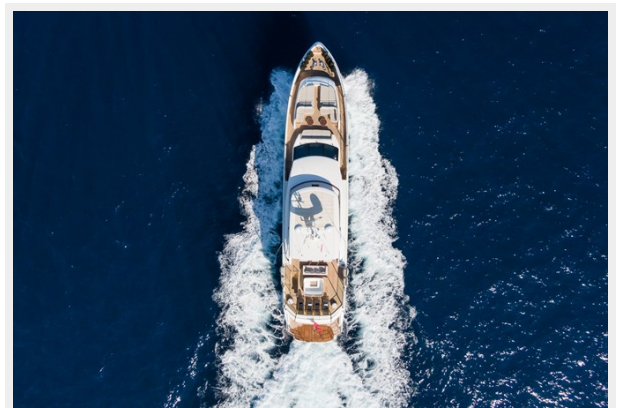
Engine Information

Engines: 2

Manufacturer: MTU

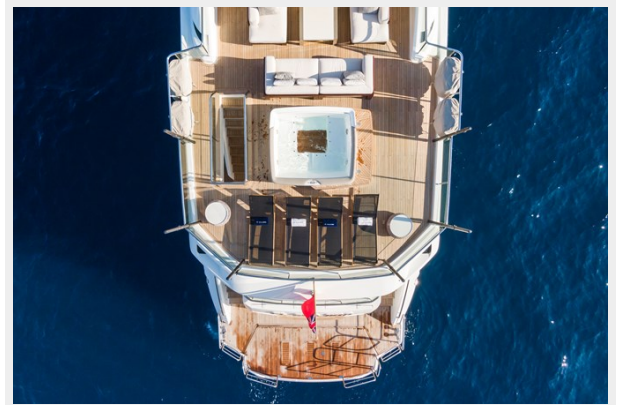
Fuel Type: Diesel

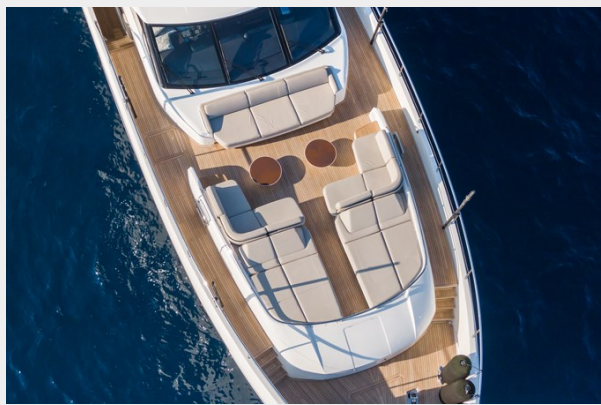
PHOTOS



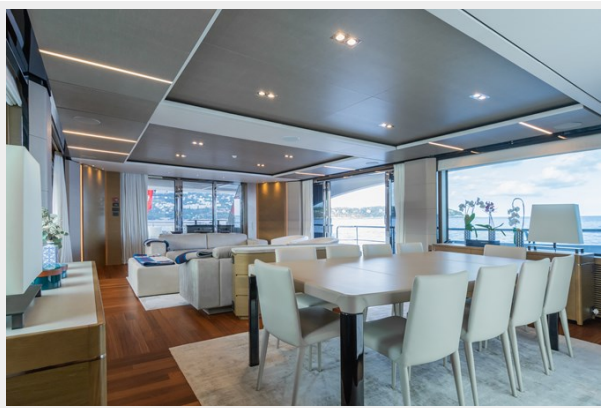






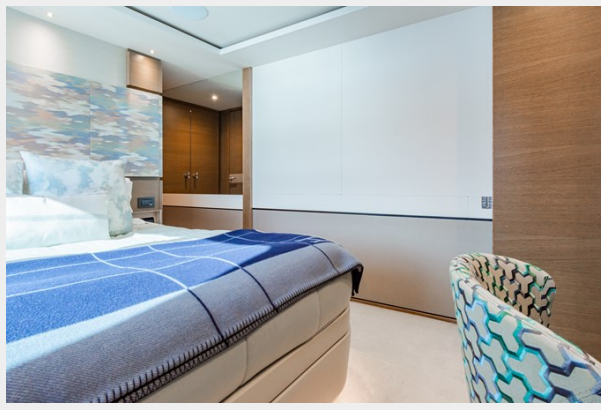


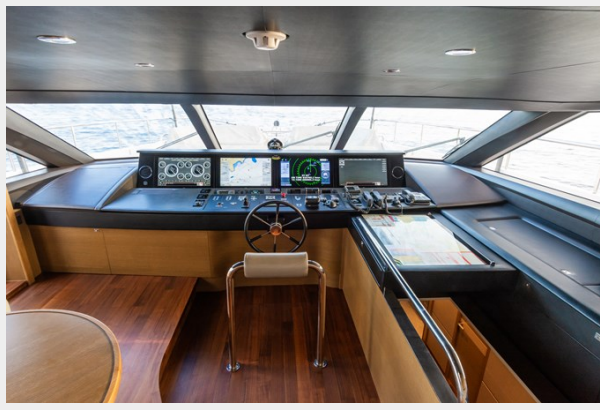












CONTACTS

Andrey Shestakov, leading yacht broker of the sales department of Shestakov Yacht Sales Inc. Shestakov Yacht Sales Inc., the official representative of the Miami/Fort Lauderdale FL headquarters.

Contact details

Email: andrey@shestakovyachtsales.com

Web: shestakovyachtsales.com/en/

Telephones

USA: +1(954)274-4435

Office hours

Monday – Saturday: **9:00 - 21:00** EDT

Sunday: **closed**

Address



Harbour Towne Marina, 850 NE 3rd St,
STE 213, Dania, FL 33004