

SWEET CAROLINE — VIKING



Builder: VIKING

Year Built: 2013

Model: Cruising Yacht

Price: PRICE ON APPLICATION

Location: United States

LOA: 42' (12.8mm)

Cruise Speed: 28 Knots Kts. (32 MPH)

Max Speed: 36 Knots Kts. (41 MPH)

Our experienced yacht broker, Andrey Shestakov, will help you choose and buy a yacht that best suits your needs **Sweet Caroline — VIKING** from **our catalogue**. Presently, at **Shestakov Yacht Sales Inc.**, we have a wide variety of yachts available on **our sale's list**. We also work in close contact with all the big **yacht manufacturers** from all over the world.

If you would like to buy a yacht **Sweet Caroline — VIKING** or would like help answering any questions concerning purchasing, selling or chartering a yacht, please call **+1(954)274-4435**

TABLE OF CONTENTS

TABLE OF CONTENTS	2
SPECIFICATIONS	5
Overview	5
Basic Information	5
Dimensions	5
Speed, Capacities and Weight	5
Accommodations	5
Hull and Deck Information	5
Engine Information	6
PHOTOS	7
transom	7
aft quarter	7
cockpit	7
aerial cockpit	7
aerial bow	8
helm seating	8
electronics helm	8
helm station	8
eng display	8
salon Satie	8
galley	9
refrigerator/freezer	9
master stateroom	9
breaker panel	9
stateroom	10
stateroom	10
head	10
shower	10

ignitions/alarm panel	11
joystick control	11
teak deck/ helm station	11
teak deck/ helm station	11
glendenning/utility cabinet	12
wash down/utility cabinet	12
phasor generator	12
port main	12
starboard main	13
port pod	13
starboard main	13
starboard pod	13
port main	14
eng rm panel & charger	14
condensing units	14
drive shaft & pod	14
pod	15
pod	15
anchor/windless	15
anchor and pulpit	15
anchor locker	16
teaser reels	16
outline	16
transom & stern	16
CONTACTS	17
Contact details	17
Telephones	17
Office hours	17
Address	17

SPECIFICATIONS

Overview

The 42 open is a great boat to run with guests, family or simple enough for the experienced angler.

Basic Information

Category: Cruising Yacht

Sub Category: Open Yacht

Model Year: 2013

Year Built: 2013

Country: United States

Dimensions

LOA: 42' (12.8mm)

Speed, Capacities and Weight

Cruise Speed: 28 Knots Kts. (32 MPH) **Max Speed:** 36 Knots Kts. (41 MPH)

Fuel Capacity: 525 Gal Gallons

Fuel Consumption: 40 Gal Gallons

Accommodations

Total Cabins: 2

Total Berths: 2

Sleeps: 4

Total Heads: 1

Hull and Deck Information

Hull Material: Fiberglass

Deck Material: Fiberglass

Hull Configuration: Deep Vee

Hull Color: white

Engine Information

Engines: 2

Manufacturer: Cummings

Engine Type: Inboard

Fuel Type: Diesel

PHOTOS

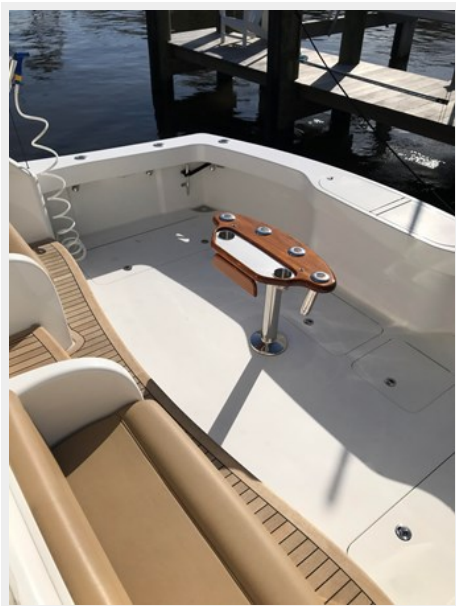
transom



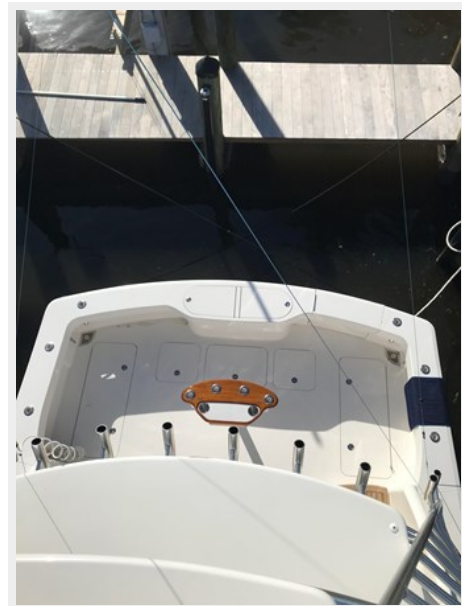
aft quarter



cockpit



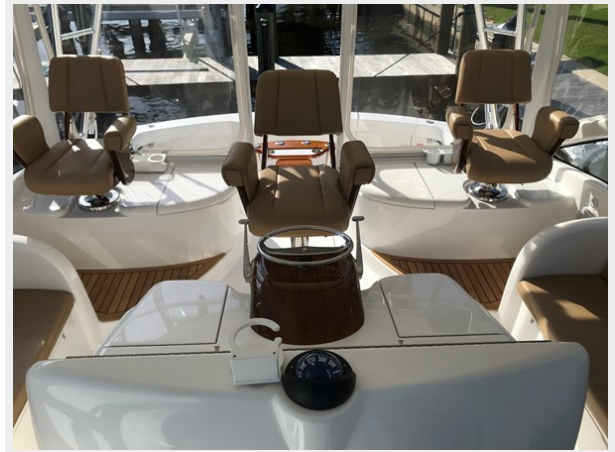
aerial cockpit



aerial bow



helm seating



electronics helm



helm station



eng display



salon Satie



galley



refrigerator/freezer



master stateroom

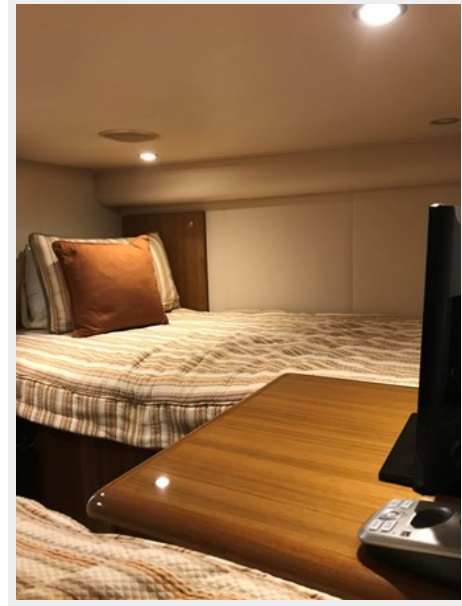
breaker panel



stateroom



stateroom



head



shower



ignitions/alarm panel



joystick control



teak deck/ helm station



teak deck/ helm station



glendenning/utility cabinet



wash down/utility cabinet



phasor generator



port main



starboard main



port pod



starboard main

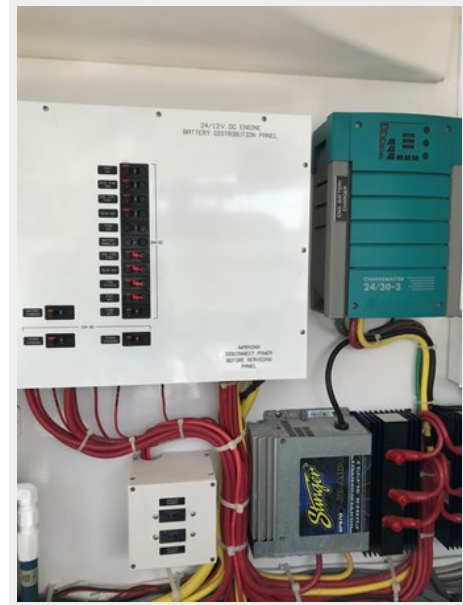
starboard pod



port main



eng rm panel & charger



condensing units



drive shaft & pod



pod



pod



anchor/windless



anchor and pulpit



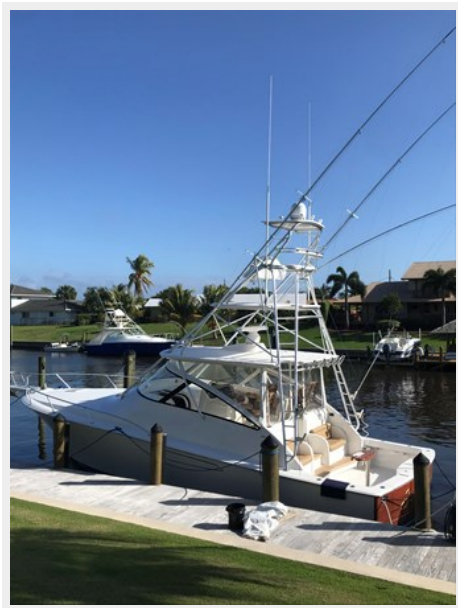
anchor locker



teaser reels



outline



transom & stern



CONTACTS

Andrey Shestakov, leading yacht broker of the sales department of Shestakov Yacht Sales Inc. Shestakov Yacht Sales Inc., the official representative of the Miami/Fort Lauderdale FL headquarters.

Contact details

Email: **andrey@shestakovyachtsales.com**

Web: shestakovyachtsales.com/en/

Telephones

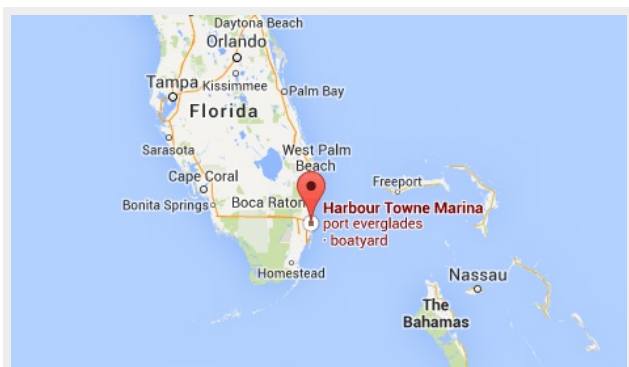
USA: **+1(954)274-4435**

Office hours

Monday – Saturday: **9:00 - 21:00** EDT

Sunday: **closed**

Address



Harbour Towne Marina, 850 NE 3rd St, STE 213, Dania, FL 33004