

SHALIMAR — BENETTI



Builder: BENETTI

Year Built: 1994

Model: Motor Yacht

Price: PRICE ON APPLICATION

Location: United States

LOA: 118' (35.97m)

Beam: 24

Max Draft: 5' 5" (1.65m)

Cruise Speed: 12 Knots Kts. (14 MPH)

Max Speed: 15 Knots Kts. (17 MPH)

Our experienced yacht broker, Andrey Shestakov, will help you choose and buy a yacht that best suits your needs **SHALIMAR — BENETTI** from our catalogue. Presently, at Shestakov Yacht Sales Inc., we have a wide variety of yachts available on our sale's list. We also work in close contact with all the big yacht manufacturers from all over the world.

If you would like to buy a yacht **SHALIMAR — BENETTI** or would like help answering any questions concerning purchasing, selling or chartering a yacht, please call **+1(954)274-4435**

TABLE OF CONTENTS

TABLE OF CONTENTS	2
SPECIFICATIONS	3
Overview	3
Basic Information	3
Dimensions	3
Speed, Capacities and Weight	3
Accommodations	3
Hull and Deck Information	4
Engine Information	4
PHOTOS	5
CONTACTS	10
Contact details	10
Telephones	10
Office hours	10
Address	10

SPECIFICATIONS

Overview

\$2mil Refit Completed 2021

SHALIMAR, built by Benetti/Azimut Yachts to a custom design by Terence Disdale that has transcended time. She features a five stateroom layout with an on-deck master and four additional guest staterooms with ensuite heads. The panoramic sky lounge, rare 3rd deck seating area, and 2nd deck sunbeds set "Shalimar" apart from other yachts of her size. In addition, the Bahamas friendly draft allows for endless charter opportunities

Basic Information

Category: Motor Yacht

Sub Category: Tri-Deck

Model Year: 1994

Year Built: 1994

Country: United States

Dimensions

LOA: 118' (35.97mm)

Beam: 24

Max Draft: 5' 5" (1.65mm)

Speed, Capacities and Weight

Cruise Speed: 12 Knots Kts. (14 MPH)

Max Speed: 15 Knots Kts. (17 MPH)

Gross Tonnage: 268 Pounds

Water Capacity: 600 Gallons

Fuel Capacity: 4399 Gal Gallons

Accommodations

Total Cabins: 5

Total Heads: 6

Hull and Deck Information

Hull Material: Fiberglass

Deck Material: Teak

Hull Configuration: Semi-Displacement

Engine Information

Engines: 2

Manufacturer: MTU

Engine Type: Inboard

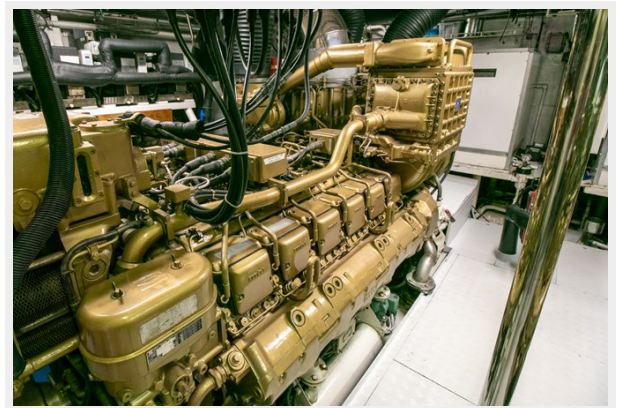
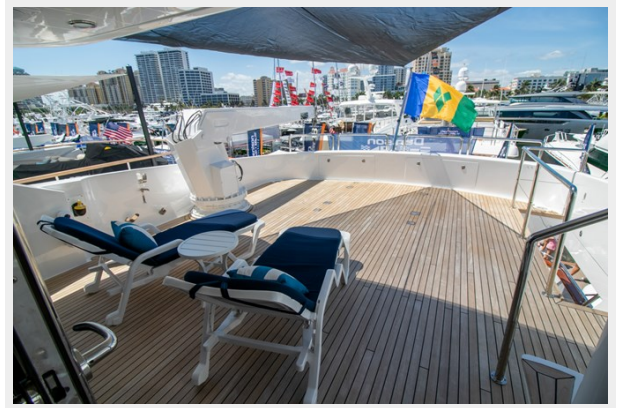
Fuel Type: Diesel

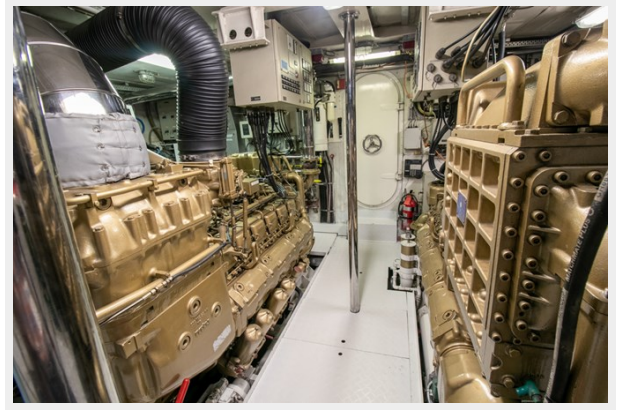
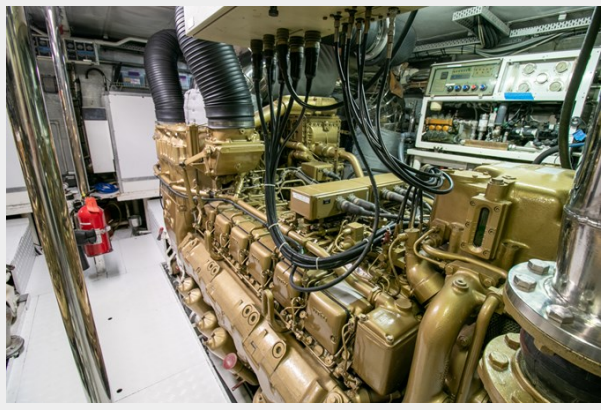
PHOTOS











CONTACTS

Andrey Shestakov, leading yacht broker of the sales department of Shestakov Yacht Sales Inc. Shestakov Yacht Sales Inc., the official representative of the Miami/Fort Lauderdale FL headquarters.

Contact details

Email: andrey@shestakovyachtsales.com

Web: shestakovyachtsales.com/en/

Telephones

USA: +1(954)274-4435

Office hours

Monday – Saturday: **9:00 - 21:00** EDT

Sunday: **closed**

Address



Harbour Towne Marina, 850 NE 3rd St,
STE 213, Dania, FL 33004