

NEGU — HATTERAS



Builder: HATTERAS

Year Built: 2016

Model: Motor Yacht

Price: PRICE ON APPLICATION

Location: United States

LOA: 60' 11" (18.57mm)

Beam: 18.16

Max Draft: 4' 6" (1.37mm)

Cruise Speed: 24 Knots Kts. (28 MPH)

Max Speed: 27 Knots Kts. (31 MPH)

Our experienced yacht broker, Andrey Shestakov, will help you choose and buy a yacht that best suits your needs **NEGU — HATTERAS** from our catalogue. Presently, at **Shestakov Yacht Sales Inc.**, we have a wide variety of yachts available on our sale's list. We also work in close contact with all the big **yacht manufacturers** from all over the world.

If you would like to buy a yacht **NEGU — HATTERAS** or would like help answering any questions concerning purchasing, selling or chartering a yacht, please call **+1(954)274-4435**

TABLE OF CONTENTS

TABLE OF CONTENTS	2
SPECIFICATIONS	5
Overview	5
Basic Information	5
Dimensions	5
Speed, Capacities and Weight	5
Accommodations	5
Hull and Deck Information	6
Engine Information	6
PHOTOS	7
03-60Hatteras	7
05-IMG_0231	7
11-IMG_0273	7
12-IMG_0280	7
20-IMG_4046_7_8	7
21-IMG_4052_3_4	7
16-IMG_4028_29_30	8
17-IMG_4034_5_6	8
31-IMG_4118_19_20	8
29-IMG_4109_10_11	8
30-IMG_4112_3_4	8
32-IMG_4127_8_9	8
71-IMG_4397_8_9	9
67-IMG_4379_80_81	9
64-IMG_4358_59_60	9
68-IMG_4382_3_4	9
66-IMG_4373_4_5	9
47-IMG_4265_6_7	9

45-IMG_4241_2_3	10
70-IMG_4391_2_3	10
46-IMG_4259_60_61	10
61-IMG_4340_1_2	10
63-IMG_4346_7_8	11
62-IMG_4343_4_5	11
34-IMG_4160_1_2	11
48-IMG_4277_8_9	11
35-IMG_4163_4_5	12
37-IMG_4172_3_4	12
43-IMG_4223_4_5	12
44-IMG_4235_6_7	12
41-IMG_4208_09_10	13
42-IMG_4211_2_3	13
39-IMG_4196_7_8	13
40-IMG_4202_3_4	13
25-IMG_4082_3_4	13
27-IMG_4091_2_3	13
53-IMG_4301_2_3	14
55-IMG_4313_4_5	14
51-IMG_4292_3_4	14
52-IMG_4295_6_7	14
56-IMG_4319_20_21	14
57-IMG_4325_6_7	14
58-IMG_4328_29_30	15
59-IMG_4331_2_3	15
60-IMG_4334_5_6	15
CONTACTS	16
Contact details	16

Telephones	16
Office hours	16
Address	16

SPECIFICATIONS

Overview

N/A

Basic Information

Category: Motor Yacht

Model Year: 2017

Year Built: 2016

Country: United States

Dimensions

LOA: 60' 11" (18.57mm)

Beam: 18.16

Max Draft: 4' 6" (1.37mm)

Speed, Capacities and Weight

Cruise Speed: 24 Knots Kts. (28 MPH) **Max Speed:** 27 Knots Kts. (31 MPH)

Gross Tonnage: 44 Pounds

Water Capacity: 250 Gallons

Holding Tank: 100 Gal Gallons

Fuel Capacity: 1200 Gal Gallons

Accommodations

Total Cabins: 3

Total Berths: 4

Sleeps: 6

Total Heads: 2

Hull and Deck Information

Hull Material: Fiberglass

Hull Color: White

Hull Designer: Hatteras

Exterior Designer: Hatteras

Interior Designer: Hatteras

Engine Information

Engines: 2

Manufacturer: Caterpillar

Engine Type: Inboard

Fuel Type: Diesel

PHOTOS

03-60Hatteras



05-IMG_0231



11-IMG_0273



12-IMG_0280



20-IMG_4046_7_8



21-IMG_4052_3_4



16-IMG_4028_29_30



17-IMG_4034_5_6



31-IMG_4118_19_20



29-IMG_4109_10_11



30-IMG_4112_3_4



32-IMG_4127_8_9



71-IMG_4397_8_9



67-IMG_4379_80_81



68-IMG_4382_3_4



64-IMG_4358_59_60



66-IMG_4373_4_5



47-IMG_4265_6_7



70-IMG_4391_2_3



45-IMG_4241_2_3



46-IMG_4259_60_61



61-IMG_4340_1_2



63-IMG_4346_7_8



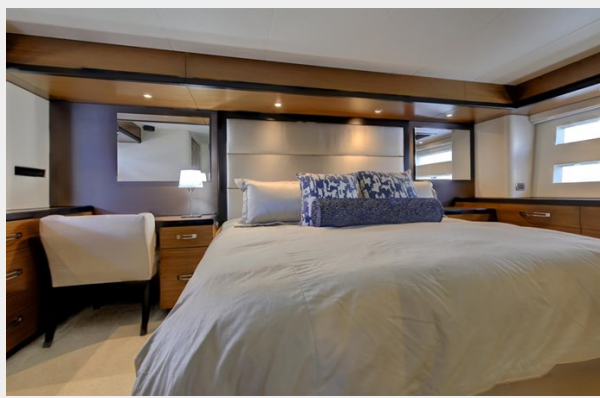
62-IMG_4343_4_5



34-IMG_4160_1_2



48-IMG_4277_8_9



35-IMG_4163_4_5



37-IMG_4172_3_4



43-IMG_4223_4_5



44-IMG_4235_6_7



41-IMG_4208_09_10



42-IMG_4211_2_3



39-IMG_4196_7_8



40-IMG_4202_3_4



25-IMG_4082_3_4



27-IMG_4091_2_3



53-IMG_4301_2_3



55-IMG_4313_4_5



51-IMG_4292_3_4



52-IMG_4295_6_7



56-IMG_4319_20_21



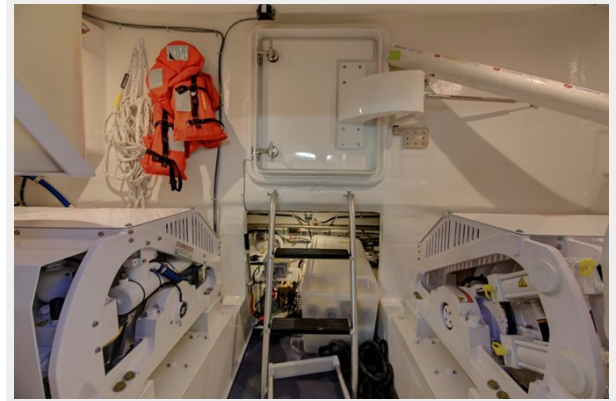
57-IMG_4325_6_7



58-IMG_4328_29_30



59-IMG_4331_2_3



60-IMG_4334_5_6



CONTACTS

Andrey Shestakov, leading yacht broker of the sales department of Shestakov Yacht Sales Inc. Shestakov Yacht Sales Inc., the official representative of the Miami/Fort Lauderdale FL headquarters.

Contact details

Email: **andrey@shestakovyachtsales.com**

Web: shestakovyachtsales.com/en/

Telephones

USA: **+1(954)274-4435**

Office hours

Monday – Saturday: **9:00 - 21:00** EDT

Sunday: **closed**

Address



Harbour Towne Marina, 850 NE 3rd St, STE 213, Dania, FL 33004