

STUDIBAKER — REGULATOR



Builder: REGULATOR

Year Built: 2016

Model: Boats

Price: **PRICE ON APPLICATION**

LOA: 28' (8.53mm)

Beam: 9.41

Min Draft: 1' 11" (0.58mm)

Max Draft: 2' 9" (0.84mm)

Cruise Speed: 30 Knots Kts. (35 MPH)

Max Speed: 50 Knots Kts. (58 MPH)

Our experienced yacht broker, Andrey Shestakov, will help you choose and buy a yacht that best suits your needs **STUDIBAKER — REGULATOR** from **our catalogue**. Presently, at **Shestakov Yacht Sales Inc.**, we have a wide variety of yachts available on **our sale's list**. We also work in close contact with all the big **yacht manufacturers** from all over the world.

If you would like to buy a yacht **STUDIBAKER — REGULATOR** or would like help answering any questions concerning purchasing, selling or chartering a yacht, please call **+1(954)274-4435**

TABLE OF CONTENTS

TABLE OF CONTENTS	2
SPECIFICATIONS	5
Overview	5
Basic Information	5
Dimensions	5
Speed, Capacities and Weight	5
Accommodations	5
Hull and Deck Information	5
Engine Information	6
PHOTOS	7
Bow Area	7
Anchor Locker	7
Bow Seating	7
Starboard Backrest	7
Port Backrest	7
Forward Console Seat	7
Generous Side Deck	8
Salt Water Wash Down	8
Freshwater Wash Down	8
Console	8
Hardtop	8
Garmin 4 KW Radome	8
Taco Outrigger	9
Taco Outrigger	9
Spreader Light	9
Rocket Launcher	9
Helm Area	9
Helm Area Lower	9

7612 Garmin	10
7612 Garmin	10
Polk Audio Stereo	10
USB Outlet	10
Overhead Electronics	10
Garmin 200 VHF	10
Garmin Reactar Autopilot	11
Helm Seats	11
Bolster Position	11
Fold Down Footrest	11
Helm Seat Rocket Launcher	11
Tackle Center	11
Starboard Side Entry Door	12
Console Sink	12
Console Head	12
Batteries	12
EPIRB	12
Walk Thru Transom Door	12
Aft Seat Folded	13
Aft Seat Down	13
Armstrong Bracket with Faux Teak	13
Transom	13
Stern Quarter	13
Alternate Profile	13
Full Cover	14
Full Cover	14
Full Cover	14
Full Cover	14
Full Cover	14

Full Cover	14
Studibaker	15
28 Regulator Logo	15
CONTACTS	16
Contact details	16
Telephones	16
Office hours	16
Address	16

SPECIFICATIONS

Overview

N/A

Basic Information

Category: Boats

Sub Category: Center Console

Model Year: 2016

Year Built: 2016

Dimensions

LOA: 28' (8.53mm)

Beam: 9.41

Min Draft: 1' 11" (0.58mm)

Max Draft: 2' 9" (0.84mm)

Speed, Capacities and Weight

Cruise Speed: 30 Knots Kts. (35 MPH) **Max Speed:** 50 Knots Kts. (58 MPH)

Gross Tonnage: 5 Pounds

Water Capacity: 33 Gallons

Fuel Capacity: 219 Gal Gallons

Accommodations

Total Heads: 1

Hull and Deck Information

Hull Material: Fiberglass

Deck Material: Fiberglass

Hull Configuration: Deep Vee

Hull Designer: Lou Codega

Engine Information

Engines: 2

Manufacturer: Yamaha

Engine Type: Outboard

Fuel Type: Gas

PHOTOS

Bow Area



Anchor Locker



Bow Seating



Starboard Backrest



Port Backrest



Forward Console Seat



Generous Side Deck



Salt Water Wash Down



Freshwater Wash Down



Console



Hardtop



Garmin 4 KW Radome



Taco Outrigger



Taco Outrigger



Spreader Light



Rocket Launcher



Helm Area



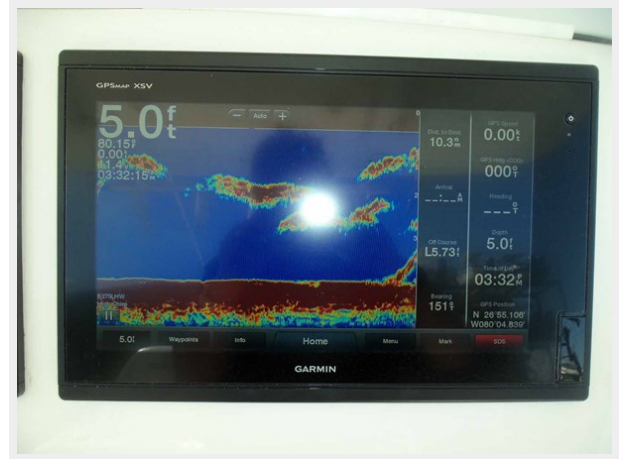
Helm Area Lower



7612 Garmin



7612 Garmin



Polk Audio Stereo



USB Outlet



Overhead Electronics



Garmin 200 VHF



Garmin Reactar Autopilot



Helm Seats



Bolster Position



Fold Down Footrest



Helm Seat Rocket Launcher



Tackle Center



Starboard Side Entry Door



Console Sink



Console Head



Batteries



EPIRB



Walk Thru Transom Door



Aft Seat Folded



Aft Seat Down



Armstrong Bracket with Faux Teak



Transom



Stern Quarter



Alternate Profile



Full Cover



Full Cover



Full Cover



Full Cover



Full Cover



Full Cover



Studibaker



28 Regulator Logo



CONTACTS

Andrey Shestakov, leading yacht broker of the sales department of Shestakov Yacht Sales Inc. Shestakov Yacht Sales Inc., the official representative of the Miami/Fort Lauderdale FL headquarters.

Contact details

Email: **andrey@shestakovyachtsales.com**

Web: shestakovyachtsales.com/en/

Telephones

USA: **+1(954)274-4435**

Office hours

Monday – Saturday: **9:00 - 21:00** EDT

Sunday: **closed**

Address



Harbour Towne Marina, 850 NE 3rd St, STE 213, Dania, FL 33004